

**STRIVE FOR EXCELLENCE  
INNOVATE FOR THE FUTURE**

**思进求变 创赢未来**



Add. 北京市安定门西滨河路9号 100011  
COMPLANT Mansion,9,Xi Bin He Lu,An Ding Men,Beijing,China  
Fax. 86-10-64211382  
[www.complant-ltd.com](http://www.complant-ltd.com)

 **国投** **COMPLANT**  
**SDIC** **中成股份**



**中成进出口股份有限公司**

CHINA NATIONAL COMPLETE PLANT IMPORT & EXPORT CORPORATION LIMITED

国投集团旗下环保产业投资平台

# 新中 成 创新 业

NEW COMPLANT  
NEW VISION





**03** COMPANY PROFILE  
企业简介

**05** OUR SHAREHOLDER  
股东介绍——国投集团

**06** SHAREHOLDING STRUCTURE  
股东结构

**07** COMPANY HISTORY  
发展历程

**09** ORGANIZATIONAL STRUCTURE  
组织结构

**10** FIELDS OF BUSINESS  
业务领域

**13** GLOBAL LAYOUT  
国际布局

## 目录

**15** DOMESTIC LAYOUT  
国内布局

**17** REFERENCE PROJECTS  
公司业绩

**20** SOCIAL RESPONSIBILITY  
社会责任

**21** QUALIFICATIONS AND HONORS  
资质荣誉

**23** SDIC WELLE ENVIRONMENTAL  
INVESTMENT CO.,LTD.  
国投维尔利环境投资有限公司

**24** TIALOC GROUP  
亚德集团



# COMPANY PROFILE

## 企业简介

中成进出口股份有限公司(下称“中成股份”)是根据《中华人民共和国公司法》等法律、法规的有关规定,经国家经济贸易委员会批准(国经贸企改[1999]40号),由中国成套设备进出口集团有限公司(下称“中成集团”)作为主发起人发起设立的股份有限公司。1999年3月,中成股份在中国国家工商行政管理局注册成立。2000年8月,中成股份7000万股人民币普通股股票向社会公开发行成功并于同年9月上市交易(股票代码:000151)。2009年3月,中成集团整体并入国家开发投资公司(下称“国投公司”)成为其全资子公司,至此,国投公司成为中成股份的实际控制人。在控股股东中成集团支持下,公司在拓展相关国际工程承包业务的同时,增加了环境科技业务的开发和实施能力,综合实力和固废处理相关细分领域的专业技术能力得到明显提升,国内、国际两个市场呈现全面发展的新格局。

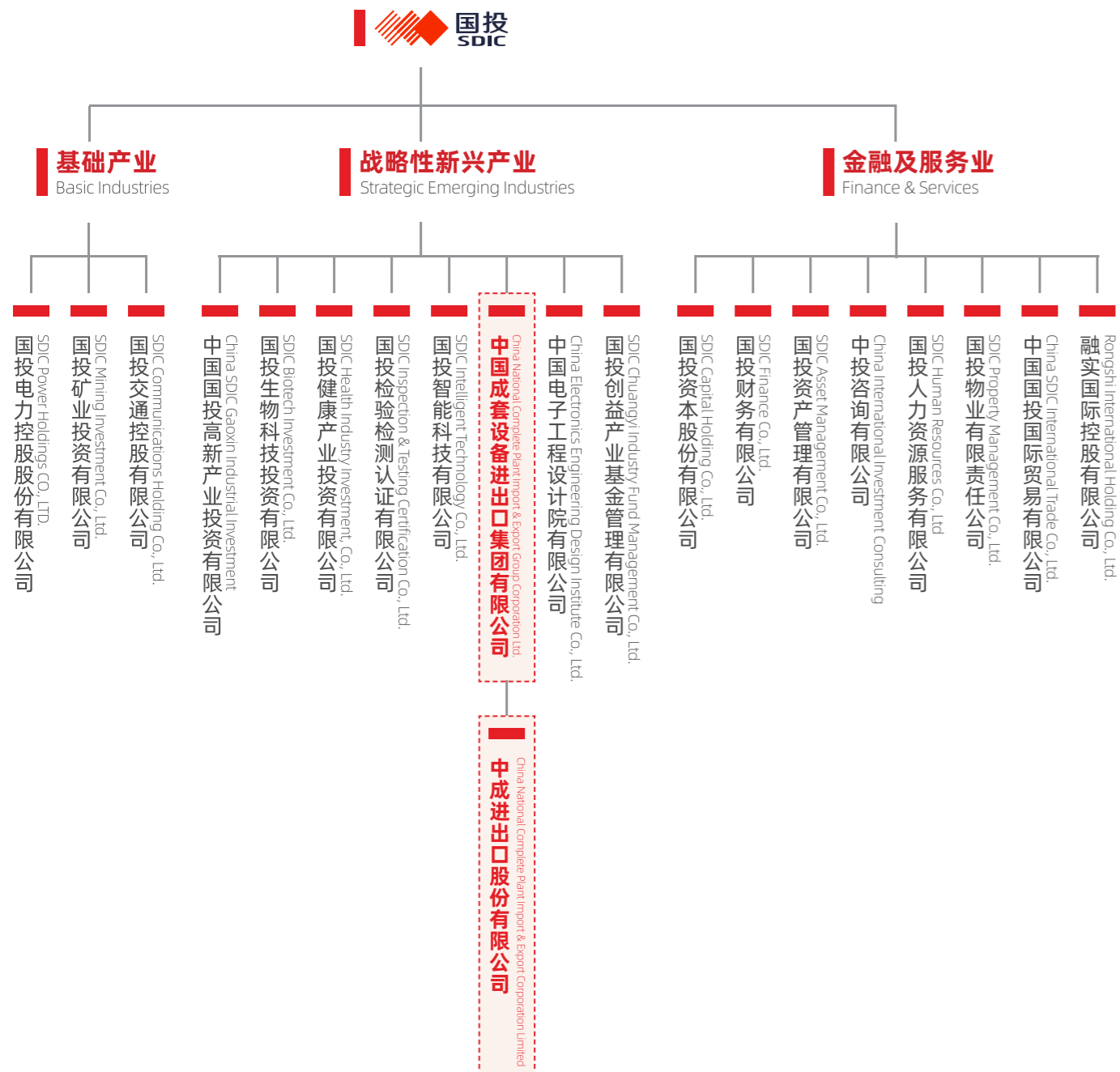
China National Complete Plant Import & Export Corporation Limited ("Complant") is a limited liability share company with China National Complete Plant Import & Export Group Corporation Limited ("Complant Group") as the main founder, approved by the State Economic and Trade Commission (Decree No. 40 [1999]) and incorporated in accordance with the Company Law of the People's Republic of China.

In March 1999, Complant was incorporated under the State Administration for Industry and Commerce of China. In August 2000 we went public through the issuance of 70 million shares of common stock, and our stock has been traded on Shenzhen Stock Exchange (SZSE) since September of the same year (Stock Code: 000151). In March 2009 Complant Group was integrated into the State Development and Investment Group ("SDIC") and became a wholly-owned subsidiary. SDIC then became the actual controller of Complant.

In addition to exploring the international project contracting market, with the support of our controlling shareholder, we have added to our own strength in the environmental technologies sector, extended our know-how and expertise into new markets, and gradually built up a competitive edge in solid waste treatment - all of which has enabled us to reinforce our project execution and market position, and gain momentum in both domestic and global markets.

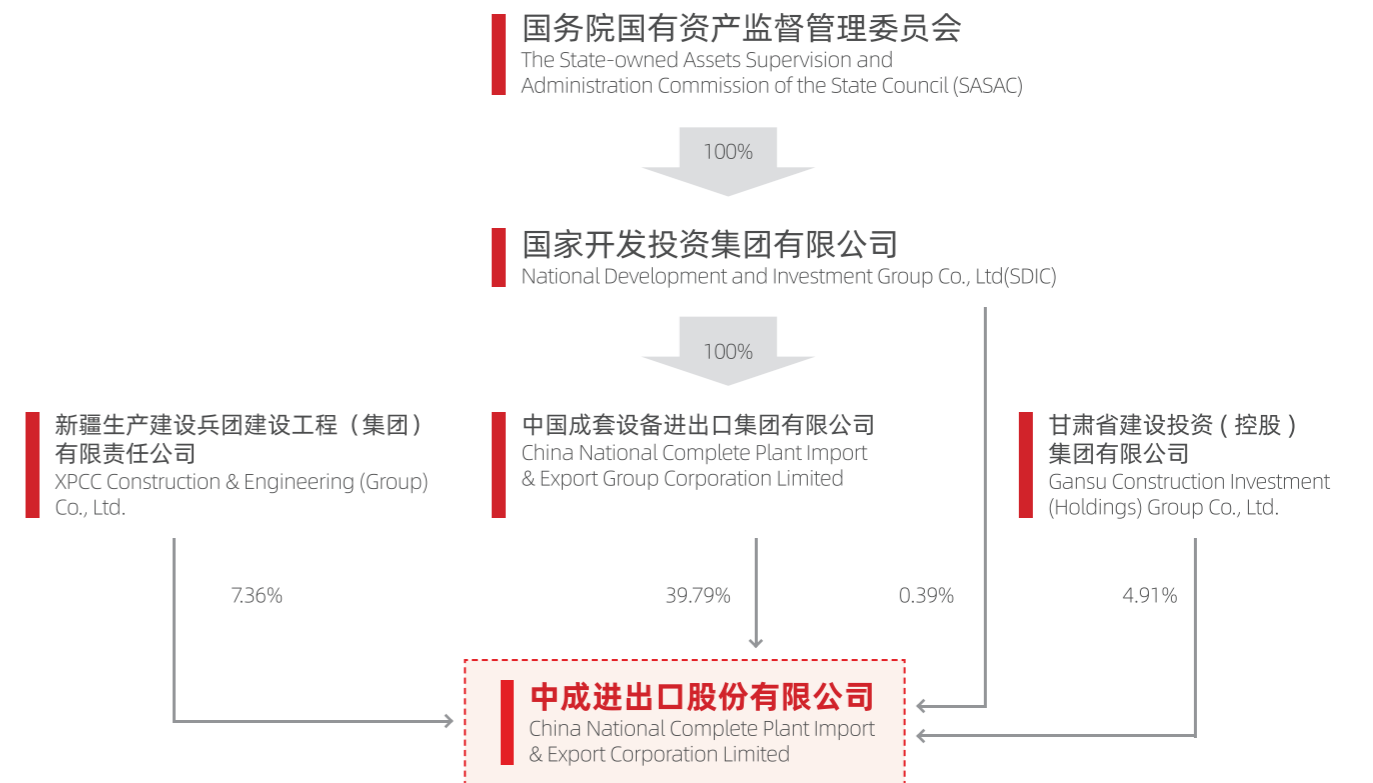
# OUR SHAREHOLDER

## 股东介绍——国投集团



# SHAREHOLDING STRUCTURE

## 股东结构



# COMPANY HISTORY

## 发展历程



1959

母公司前身——中国成套设备出口公司。

China National Complete Plant Export Corporation, our parent company, was founded.

1993

中国成套设备出口公司改组为中国成套设备进出口（集团）总公司。

Our parent company was restructured and renamed as China National Complete Plant Import & Export Group Corporation.

1999

中国成套设备进出口（集团）总公司（以下简称中成集团）作为主发起人，组建中成进出口股份有限公司。公司股票于2000年公开发行成功并开始在深圳证券交易所上市交易。

The Complant Group, as main founder, established China National Complete Plant Import & Export Corporation (Complant). We launched a successful IPO and our stock was traded on SZSE in 2000.

2009

3月，中成集团整体并入国家开发投资公司（以下简称国投公司）成为其全资子公司，至此，国投公司成为中成进出口股份有限公司的实际控制人。

In March the Complant Group was integrated into the State Development and Investment Corporation ("SDIC") as its wholly-owned subsidiary. Since then SDIC has been the actual controller of Complant.

2021

公司非公开发行成功完成。

公司收购亚德集团，实现公司向环保领域的转型发展。

Complant made a non-public offering on Shenzhen Stock Exchange. Complant acquired Tialoc Group and expanded into the new market of environmental protection.

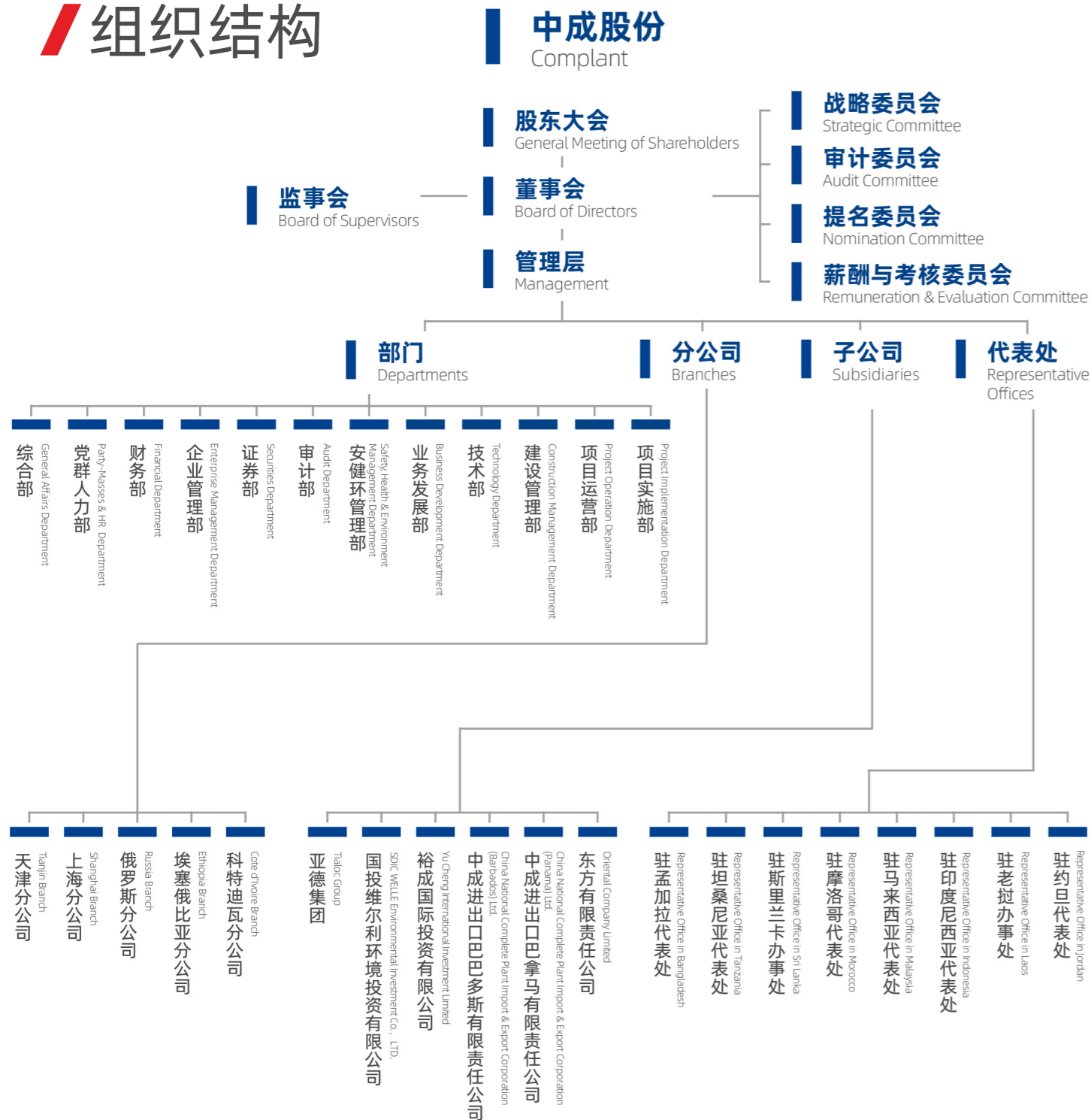
2022

公司出资设立国投维尔利环境投资有限公司，市政固废业务加快布局。

COMPLANT set up SDIC WELLE Environmental Investment Co., LTD and accelerated the corporate strategy in municipal solid waste business.

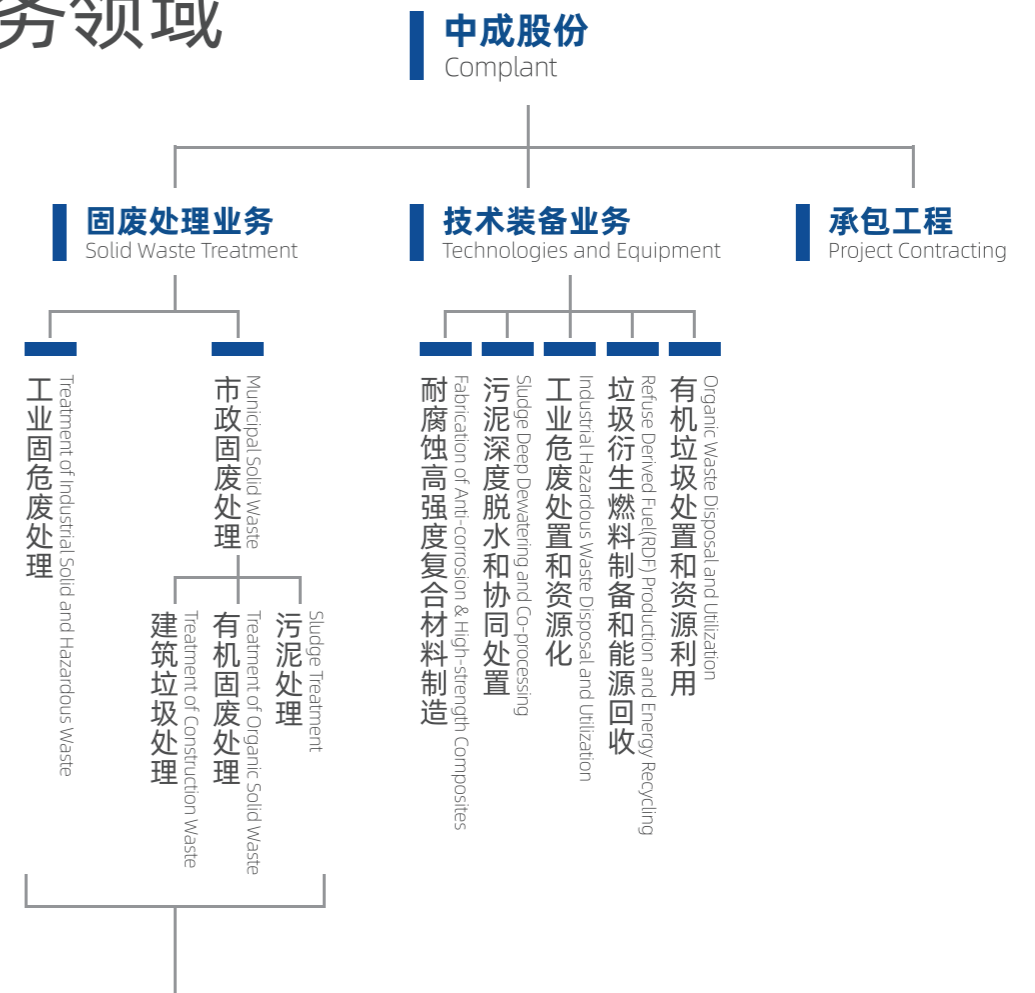
# ORGANIZATIONAL STRUCTURE

## 组织结构



# FIELDS OF BUSINESS

## 业务领域



### 核心技术 Core Technologies:

- 建筑垃圾协同处理及资源化技术  
Co-processing and Recycling Technology of Construction Waste
- 有机垃圾干式厌氧发酵技术  
Organic Waste Dry Anaerobic Fermentation Technology
- HI-TO 高强度热氧化炉  
HI-TO Hi-Intensity Thermal Oxidizer
- LeDeNOx® 低能耗超低氮焚烧技术  
LeDeNOx Low Energy Ultra-Low NOx Emissions Combustion System
- 罐区尾气回收和处理系统 (VVT)  
Tank Farm Vapor Recovery and Treatment System (VVT)
- Redu-Reox® 回转窑气化焚烧系统  
Redu-Reox® Rotary Kiln Gasification and Combustion System
- 尾气超净排放技术  
Exhaust Ultra-low Emission Technology



## ONE-STOP SERVICE OF THE WHOLE INDUSTRIAL CHAIN

全产业链一站式服务

## PROMOTING GREEN, SUSTAINABLE AND HIGH-QUALITY DEVELOPMENT

推动绿色可持续高质量发展

## INVESTMENT & FINANCING

### 投融资

股权投资和产业培育并重。

拥有募投管退的核心投资能力，增强了环保业务平台价值创造和独立造血能力，有效促进内部高效协同，推动高质量发展。

母公司国有资本投资公司的强大的背景支持。

Equal importance to equity investment and industry incubation.

With competitive advantages from fund-raising and investment to post-investment management and sell-off, COMPLANT has achieved effective internal coordination and quality growth to enhance value creation and independent operation capacity in the environmental protection sector.

Full support from our parent company the controlling shareholder-SDIC, a state-owned capital investment corporation.

## CONSTRUCTION

### 建设

丰富的工程建设业绩：在全球 100 多个国家建成超过 1600 多个大中型成套项目。

在固废、工业三废处理和资源利用领域具有领先的技术储备和丰富的业绩经验。

设计、采购、施工全产业链服务。

Various reference projects, over 1 600 large and medium sized complete plant projects in more than 100 countries worldwide.

Cutting-edge technologies and rich experience in treating solid waste, industrial waste and the recycling of resources.

Full value chain service from engineering to procurement and construction.

## OPERATION

### 运营

专业的运营团队和高效的流程管理，持续优化运营成本。

一站式智能环保管家服务：通过数字化和 VR 等技术进行集约化、智慧化运营管理。

在固废、工业三废处理和资源利用领域拥有领先的运营技术和经验。

Professional operation team and effective operation process to continuously optimize our operational cost.

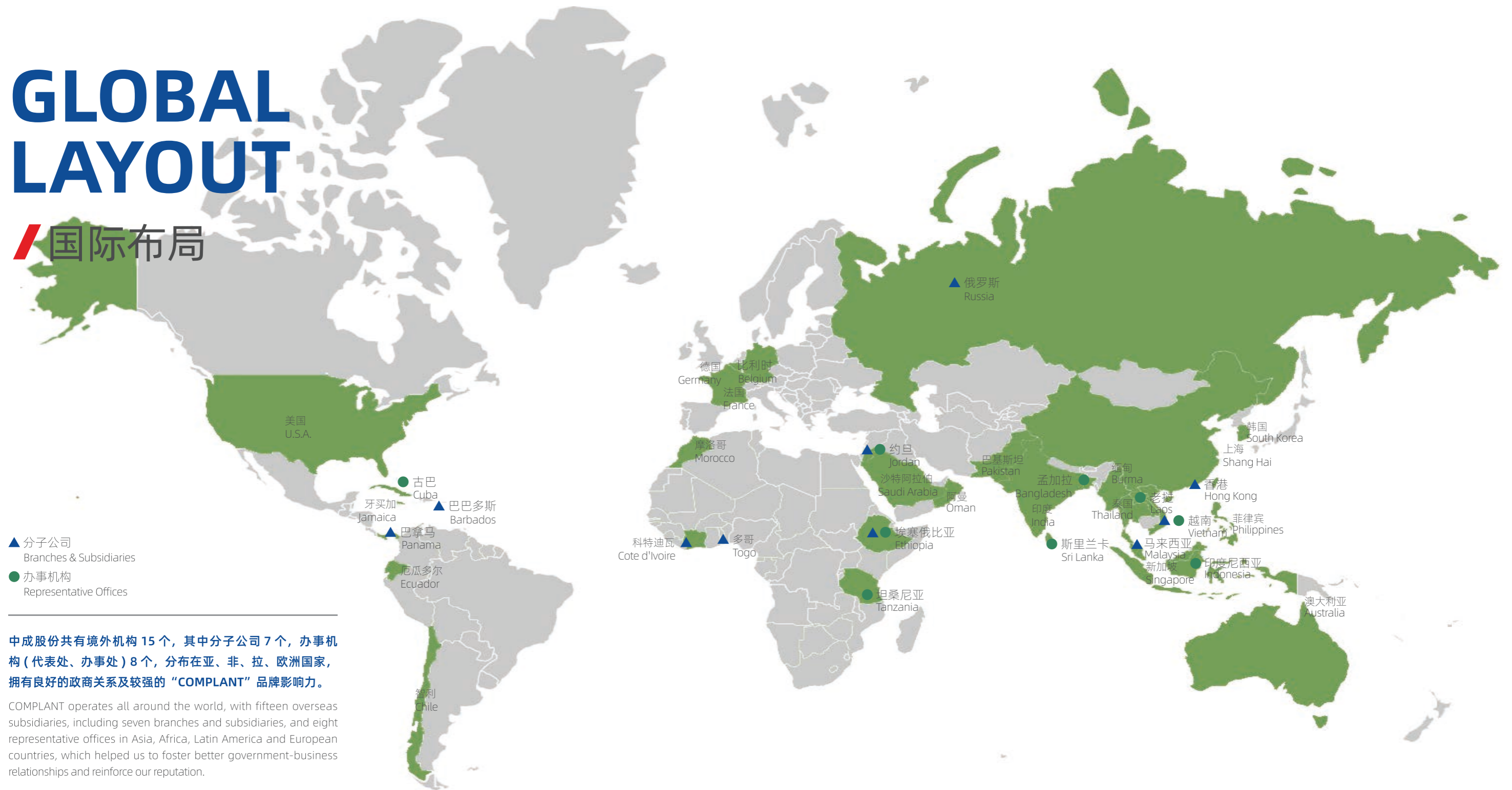
One-stop smart environmental butler service: provide intensive and intelligent operational management with the help of digital technology and VR technology.

Leading operational technologies and rich experience in handling solid waste, industrial waste and resources sustainably.



# GLOBAL LAYOUT

## 国际布局



- ▲ 分子公司  
Branches & Subsidiaries
- 办事机构  
Representative Offices

中成股份共有境外机构 15 个，其中分子公司 7 个，办事机构 (代表处、办事处) 8 个，分布在亚、非、拉、欧洲国家，拥有良好的政商关系及较强的“COMPLANT”品牌影响力。

COMPLANT operates all around the world, with fifteen overseas subsidiaries, including seven branches and subsidiaries, and eight representative offices in Asia, Africa, Latin America and European countries, which helped us to foster better government-business relationships and reinforce our reputation.



法国某危废处置装置  
Hazardous Waste Treatment Facility in France



埃塞俄比亚 OMO-Kuraz3 糖厂项目  
OMO-Kuraz3 Sugar Refinery in Ethiopia



埃塞俄比亚 OMO-Kuraz2 糖厂项目  
OMO-Kuraz 2 Sugar Refinery in Ethiopia



马来西亚某稀土加工烟气脱硫项目  
Rare Earth Processing Flue Gas Desulfurization Project in Malaysia



缅甸家用及公共设施太阳能项目  
Photovoltaic Systems Project for Domestic and Public Facilities in Burma

# DOMESTIC LAYOUT

## 国内布局



**山东某精细化工行业废气液焚烧项目**  
Waste Liquid and Waste Gas Incineration, Fine Chemicals Industry, Shandong



**南京某化工行业热氧化炉**  
Thermal Oxidizer, Chemical Industry, Nanjing



**上海某化工行业废液焚烧项目**  
Liquid Waste Incineration System, Chemical Industry, Shanghai



**江西某多晶硅行业废水处理项目**  
Waste Water Treatment, Polysilicon Industry, Jiangxi



**南京某罐区热氧化炉**  
Tank Farm Thermal Oxidizer, Nanjing



**福建某化工行业废气处理系统**  
SNCR and Flue Gas Treatment, Chemical Industry, Fujian



**烟台某化工行业气液焚烧项目**  
Liquid Waste Incineration System, Chemical Industry, Yantai

中成股份共有境内分公司 2 家，控股公司 2 家，均位于国内沿海发达城市，业务领域涵盖环境科技，固废处理、复合材料、工程承包、仓储、租赁、运输等，涉及项目分布于国内多个城市。

COMPLANT owns two domestic subsidiaries and two holding companies, all located in the well-developed coastal cities of China, we operate in an extensive portfolio of services from environmental technology, solid waste treatment, and composite materials to project contracting, warehousing, leasing, and transport. In addition, our reference projects are located in various cities in China.

为巴斯夫、拜耳、赢创、康宁、中化、万华、新和成等数十个国际国内石化化工、制药等行业龙头企业提供 150 余套环保技术和成套解决方案。

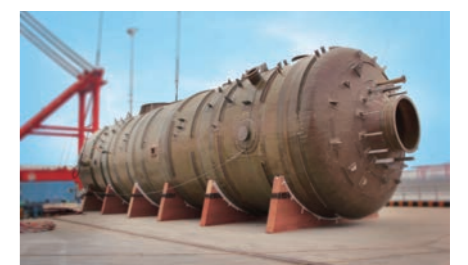
COMPLANT has provided over 150 one-stop environmental solutions for domestic and overseas leading companies in petrochemical, chemical, pharmaceutical and other industries, such as BASF, Bayer, Evonik, Corning, Sinochem, Wanhua, and NHU.



**海南某危险废物处置中心**  
Hazardous Waste Incineration Plant, Hainan



**重庆某化工行业扰流管式反应器**  
Spoiler Tube Reactor, Chemical Industry, Chongqing



**珠海某化工行业大型洗涤塔**  
Chemical Washing Tower, Zhuhai

# REFERENCE PROJECTS

## 公司业绩



埃塞俄比亚肯色糖厂项目  
The Kesem Sugar Refinery Project in Ethiopia



牙买加蒙特哥贝会展中心项目  
The Montego Bay Convention Center Project in Jamaica



牙买加 ASM 酒店项目  
The ASM Hotel Project in Jamaica



厄瓜多尔某医疗废物处理项目  
The Medical Waste Treatment Project in Ecuador



新加坡某废水处理项目  
Waste Water Treatment Project in Singapore



巴巴多斯山姆罗德酒店项目  
Sam Lord Castle Project in Barbados



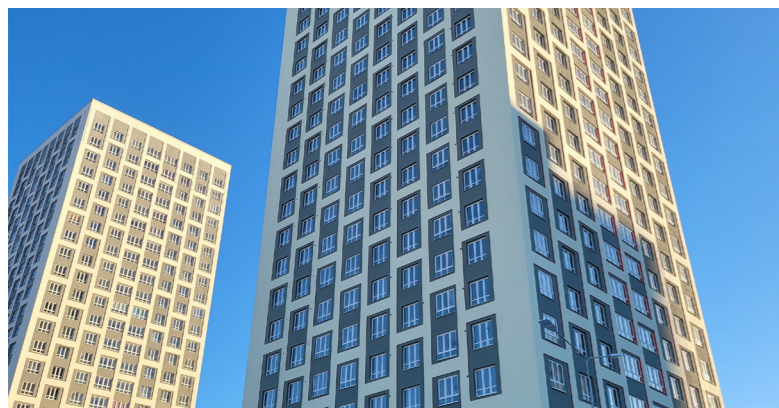
比利时安特卫普石化基地危废综合处置项目  
Hazardous Waste Incineration Plant in Antwerp, Belgium

# REFERENCE PROJECTS

## 公司业绩



牙买加经济住房项目  
Affordable Housing Project in Jamaica



俄罗斯叶卡捷琳堡科学城住宅项目  
Academic City Apartment Project in Yekaterinburg, Russia



老挝万象生活中心项目  
Vientiane Life Center in Laos

# SOCIAL RESPONSIBILITY

## 社会责任



中成股份在埃塞俄比亚承建的肯色、OMO2、OMO3 三座糖厂项目，在带动当地居民实现就业，加强本土技术人才培养，促进埃塞产业升级的发展进程中发挥重要作用。据埃方政府部门相关统计，中成股份在埃承建的三座糖厂项目每年可产白糖 63 万吨，为埃塞政府节约白糖进口支出 1.2 亿美元，实现出口创汇 1.32 亿美元，并帮助埃塞 6.5 万民众成功实现就业。

疫情期间，中成股份积极履行海外社会责任，主动配合项目东道国进行疫情防控、稳产保产等重点工作。在埃塞俄比亚，公司逆疫情而上，为当地糖厂创经营业绩新高；在俄罗斯、巴巴多斯等国，公司积极捐赠医疗物资，助力当地民众科学抗疫；在老挝，公司迅速响应当地抗旱救灾倡议，踊跃捐赠善款……中成股份的仁义之心和善意之举获项目东道国政府和民众的高度赞誉，充分展现出中国企业的责任与担当。

Three sugar refineries undertaken by COMPLANT, namely KESEM, OMO2, and OMO3, have created plenty of job opportunities for local communities and facilitated the upgrading and transformation of relevant industries in Ethiopia through engaging staff and training of local technical personnel. According to the statistics of the Ethiopia government, with an annual production of 630 000 tons of sugar, the three sugar refineries has helped the Ethiopia government to cut down on their relevant cost up to 120 million US dollars in sugar import and bring about a foreign exchange earning of 132 million US dollars in sugar export and has created about 65 000 jobs for the local people.

During the COVID-19 pandemic, COMPLANT actively fulfilled its social responsibility by working with local governments in pandemic prevention and production guarantee. In Ethiopia, COMPLANT endeavored to help the three refineries to reach a new high in their business performance. In Russia and Barbados, COMPLANT donated plenty of medical equipment to assist the local communities in their pandemic prevention efforts. In Laos, COMPLANT responded promptly to the local government's donation solicitation by raising funds for drought alleviation. The acts of benevolence and goodwill of COMPLANT have been highly praised by local governments and communities, which memorably showcased the spirit of togetherness of a responsible Chinese enterprise.

# QUALIFICATIONS AND HONORS

## 资质荣誉



## CHINA CONSTRUCTION ENGINEERING LUBAN PRIZE (OVERSEAS PROJECT)

### 中国建设工程鲁班奖（境外工程）



孟加拉磷酸二铵化肥厂获得中国建设工程鲁班奖（境外工程）  
Diammonium-Phosphate Chemical Fertilizer Plant in Bangladesh won the China Construction Engineering Luban Prize (Overseas Project).



孟加拉沙迦拉化肥厂获得中国建设工程鲁班奖（境外工程）  
Shahjalal Chemical Fertilizer Plant in Bangladesh won the China Construction Engineering Luban Prize (Overseas Project).



# SDIC WELLE ENVIRONMENTAL INVESTMENT CO.,LTD.

## 国投维尔利环境投资有限公司

国投维尔利环境投资有限公司是由中成集团，中成股份与维尔利环保集团共同投资设立的合资公司，注册资本一亿元人民币。

公司业务定位为有机固废、建筑垃圾资源化为主的市政固废业务投资、建设、运营，在相关领域开展投资及相关配套业务。同时，探索再生资源利用、环卫等新业务领域，发挥国投和维尔利的“央企背景+技术背景”的互补优势，打造国际一流的以市政固废为主的生态环保综合投资建设运营商。

SDIC WELLE Environmental Investment Co., LTD. ("SDIC WELLE") is a joint venture set up by COMPLANT Group, COMPLANT, and WELLE Group with a registered capital of 100 million RMB.

SDIC WELLE is committed to providing investment, construction, operation and relevant supporting services in municipal solid waste business, such as organic solid waste and construction waste meanwhile exploring new business areas such as the utilization of renewable resources and environmental sanitation. SDIC and WELLE will combine our advantages of state-owned enterprise and profound expertise, which will lead us to a trusted partner that provides an array of integrated solutions related to the investment, construction and operation in environmental protection sector with a focus on the recovery of municipal solid waste to promote the transition toward a green economy.



# TIALOC GROUP

## 亚德集团



亚德（Tialoc）是一家于2001年创立于德国的环保集团，在环保系统成套、总承包建设和非金属复合材料领域有着丰富的技术积累和实施经验，服务于众多跨国公司以及主要工业市场的核心客户，尤其是在化工、石化、医药、石油天然气、采矿与矿物加工、半导体、电力及再生能源等领域，为各行业工业用户提供一站式交钥匙解决方案。

Tialoc, an environmental protection group founded in Germany in 2001, has rich technical accumulation and implementation experience in the fields of complete sets of environmental protection systems, general contracting construction and non-metallic composite materials, and serves many multinational companies and core customers in major industrial markets, especially in the fields of chemical industry, petrochemical, medicine, oil and gas, mining and mineral processing, semiconductors, electricity and renewable energy, provide one-stop turnkey solutions for industrial users in various industries.

tialoc