

31 March 2025

**Oracle Power PLC**  
("Oracle" or the "Company")

**Exploration Underway at the Blue Rocks Copper Project in Australia**

***APEX Geoscience on site to complete maiden geochemical sampling programme***

Oracle Power PLC (AIM:ORCP), an international project developer, is pleased to announce that Apex Geoscience has started the maiden geochemical sampling programme to progress exploration at the Blue Rock Valley Copper and Silver Project (the "Project"), located in the Ashburton Basin in the northwest region of Western Australia. The Project is located 165km southeast of Onslow, the main port for the region's Iron and LNG exports, which is a multi-user port. The Project site is accessed from the North West Coastal Highway on a well-maintained unsealed road. Refer to **Figure 1** below for location.

Apex Geoscience has started the geochemical sampling programme over the multiple gravity targets identified along the main Blue Rock valley copper mineralised trend of ~2km strike, **Figures 2 and 3**. Drilling targets will be refined by this sampling programme. Further geophysical techniques are also being considered such as Expert Geophysics MobileMT drone-based system, that has had been successful in identifying sulphide anomalies in Western Australia.

**Naheed Memon, CEO of Oracle, commented:**

*"I am very pleased with the positive results to date, and it is great to now bring Apex Geoscience in to the project and start exploration over the gravity anomalies that strike over ~ 2km around the high grade copper rock chip samples. Geochemical sampling is underway as the next best step to advance the project towards drilling, and will be used as a multi vector to rank gravity anomalies for priority drilling. I look forward to updating shareholders in due course as we continue work advancing this project."*

**For further information on Oracle, visit the Company's website at <http://www.oraclepower.co.uk> or contact:**

**Oracle Power PLC**

Naheed Memon - CEO

+44 (0) 203 580 4314

**Strand Hanson Limited (Nominated Adviser & Broker)**

Rory Murphy, Matthew Chandler, Rob Patrick

+44 (0) 20 7409 3494

**St Brides Partners Limited (Financial PR)**

Susie Geliher, Isabel De Salis

+44 (0) 20 7236 1177

**Competent Person's Statement**

The information in this announcement that relates to exploration results, exploration targets, mineral resources or ore reserves is based on information compiled by Mr Edward Mead, who is a Fellow of the Australasian Institute of Mining and Metallurgy. Mr Mead is a director of Riversgold Limited and a consultant to the Company through Doralda Pty Ltd. Mr Mead has sufficient experience which is relevant to the style of mineralisation and type of deposit under consideration and to the activity that he is undertaking to qualify as a Competent Person as defined in the 2012 edition of the 'Australasian Code for Reporting Exploration Results, Mineral Resources and Ore Reserves' (the JORC Code). Mr Mead consents to the inclusion of this information in the form and context in which it appears in this announcement.

**About Blue Rock Valley Copper and Silver Project:**

### The Project Tenement:

The Project tenement (the "Tenement") covers 32 Blocks (approximately 102km<sup>2</sup>) (**Figure 1**) and is composed of one granted exploration licence, E08/3604. Oracle Power announced on the 11 June 2024 that it had exercised its option to acquire 100% of the tenement. The Tenement was granted on 2 October 2023 and expires on 26 October 2028 but is renewable. The first term is therefore five years with a possible initial extension of five years and further extensions of two years thereafter, with 40% of the licence area to be surrendered at the end of year six.

The Blue Rock Valley Copper and Silver Project (E08/3604) is in the Ashburton Basin, in the northwest region of Western Australia. The site is located 165km southeast of Onslow, the main port for the region's Iron and LNG exports, which is a multi-user port. Access is from the Northwest Coastal Highway on a well-maintained unsealed road.

### Project Geology

The eastern portion of the Project area overlies the Wyloo Group sediments of the Ashburton Basin which are unconformably overlain by rocks of the Edmund Basin (previously the Bangemall Basin), which cover the western portion of the Tenement. The contact between the Ashburton and Edmund basins is interpreted as being a thrust contact with movement to the west and can be clearly seen in the regional aeromagnetic image.

### Mineralisation

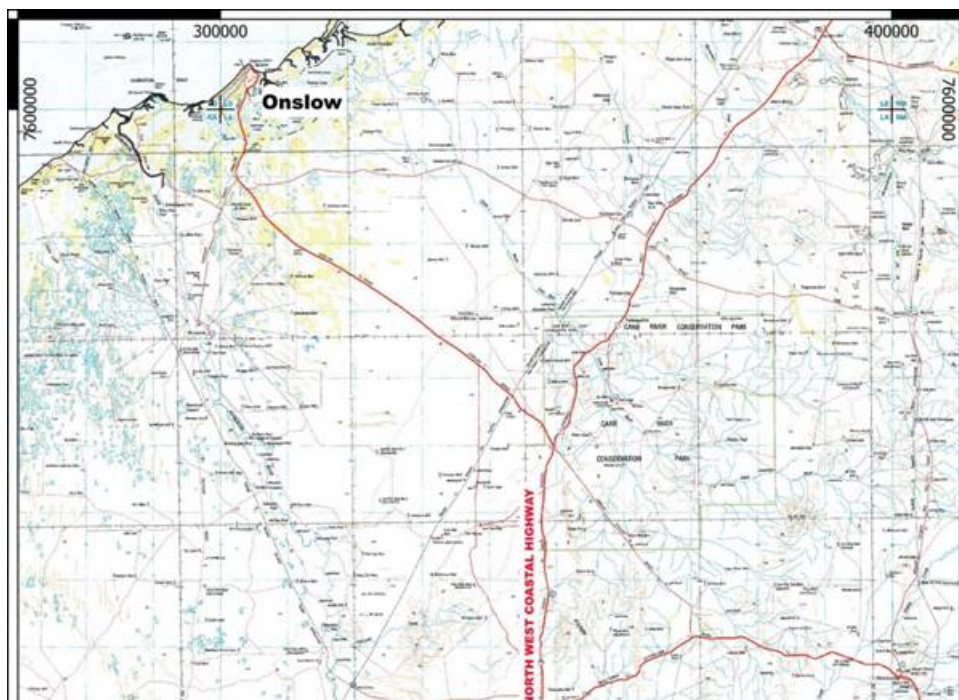
The Ashburton Mineral Field (which incorporates the Project area) has a long history of gold, copper, silver, lead and zinc exploration.

Several smaller prospects which were historically exploited for gold, copper, silver and lead are located nearby including the Soldiers Secret and Top Camp gold deposits. Small-scale production of copper, lead and silver has also been recorded in the Ashburton Basin, mainly from the Ashburton Downs copper deposits within the Project area and others in the region such as Kooline (Pb, Ag) and Bali Hi (Cu-Pb-Ag) areas.

Blue Rock Valley high-grade rock chip and grab samples as announced on 12 July 2024 that confirmed the historical tenure of the copper mineralisation:

- **18.2%** Copper, OBR001
- **12.34%** Copper, OBR002
- **25.7%** Copper, OBR003
- **8.56%** Copper, OBR004
- **10.08%** Copper, OBR005

A ground gravity survey confirmed multiple gravity targets for follow up work along the main Blue Rock valley copper mineralised trend of ~2km strike the survey covered.



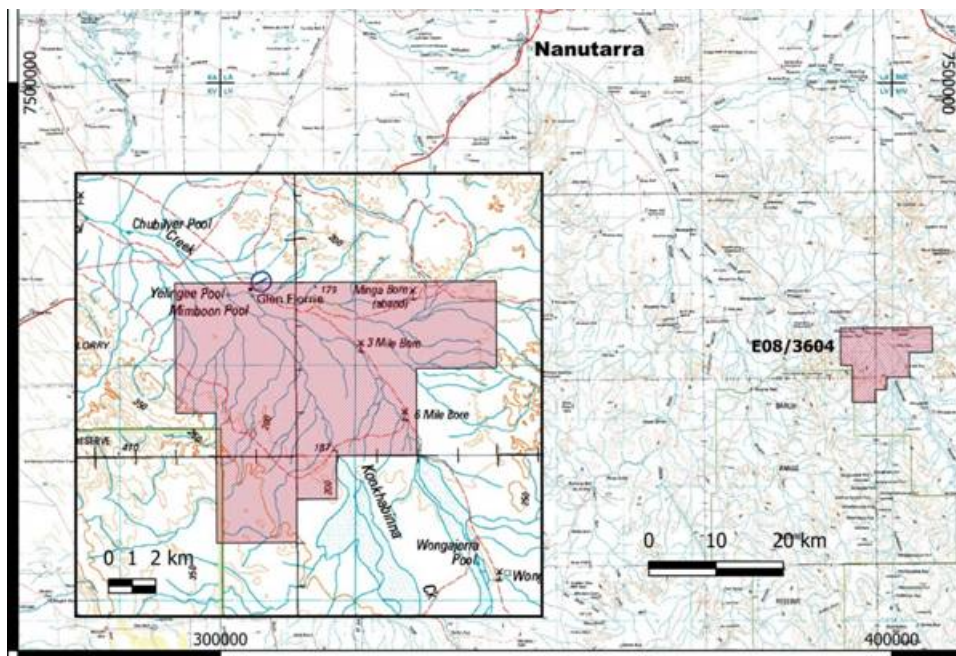


Figure 1: Blue Rock Valley project location and access

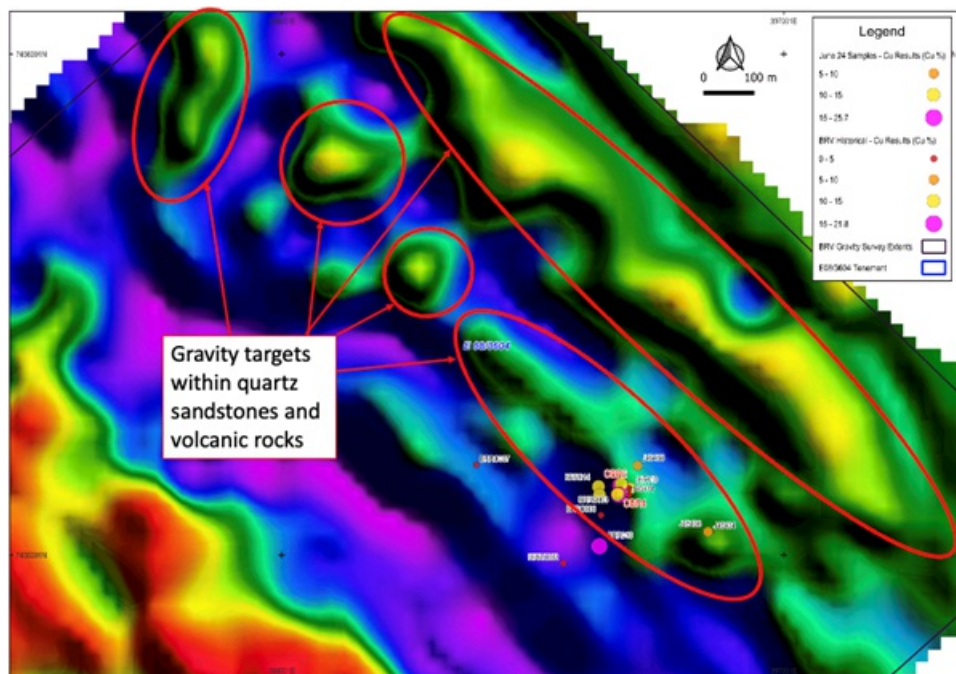
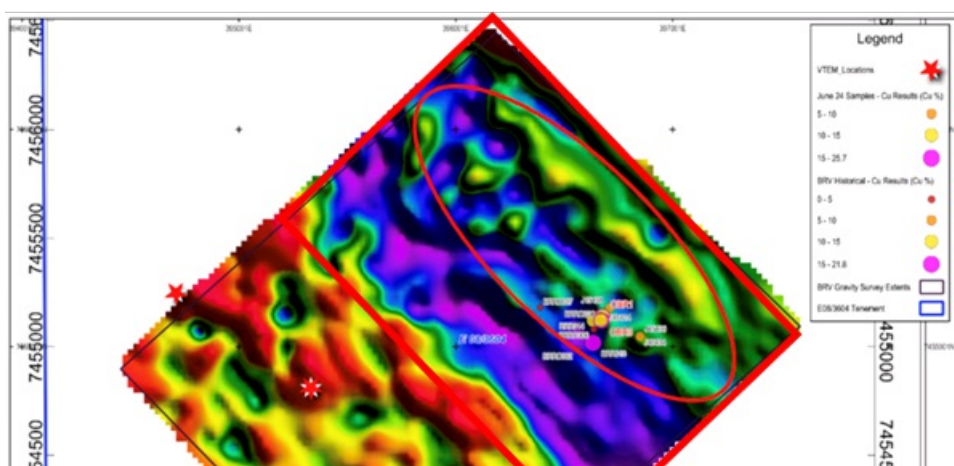
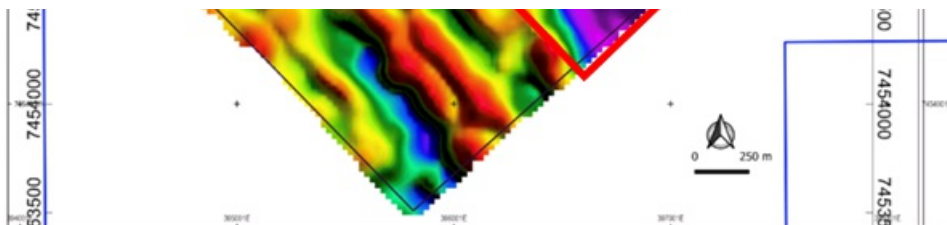


Figure 2: Zoomed in gravity survey results over the immediate Blue Rock Valley known mineralisation with 1VD Bouguer Gravity anomalies highlighted in red circles

Figure 3: 1VD Bouguer Gravity with VTEM anomalies (Red Stars) and red oval for Blue Rock Valley gravity anomaly. Red rectangle of area to be targeted with geochemical sampling.







## APPENDIX 1: Drilling Information

Table 1: Northern Zone Drill Collar Locations

Hole Id	Type	MGA_E	MGA_N	Elevation (m)	Total Depth (m)	Dip (°)	AZM_MGA	Date
NZRC007	RC	381512	6592636	356.95	120	-60	225	04/03/25
NZRC008	RC	381560	6592644	356.82	121	-60	225	03/03/25

Table 2: Northern Zone Significant Intercepts

Hole ID	From (m)	To (m)	Width (m)	Au g/t	Intercept
NZRC007	39	93	54	0.65	54m @ 0.65 g/t Au from 39m
including	39	46	7	3.62	inc. 7m @ 3.62 g/t Au from 39m
including	42	43	1	10.81	inc. 1m @ 10.81 g/t Au from 42m
including	44	45	1	12.10	inc. 1m @ 12.10 g/t Au from 44m
including	52	53	1	3.97	inc. 1m @ 3.97 g/t Au from 52m
NZRC008	37	91	54	0.51	54m @ 0.51 g/t from 37m
including	37	42	5	4.37	inc. 5m @ 4.37 g/t Au from 37m
including	40	41	1	15.13	inc. 1m @ 15.13 g/t Au from 40m

This information is provided by RNS, the news service of the London Stock Exchange. RNS is approved by the Financial Conduct Authority to act as a Primary Information Provider in the United Kingdom. Terms and conditions relating to the use and distribution of this information may apply. For further information, please contact [ms@seg.com](mailto:ms@seg.com) or visit [www.ms.com](http://www.ms.com).

RNS may use your IP address to confirm compliance with the terms and conditions, to analyse how you engage with the information contained in this communication, and to share such analysis on an anonymised basis with others as part of our commercial services. For further information about how RNS and the London Stock Exchange use the personal data you provide us, please see our [Privacy Policy](#).

END

UPDPPURWWUPAGAR