

GREAT WESTERN MINING CORPORATION PLC
("Great Western", "GWM" or the "Company")

HIGH GRADE SAMPLE RESULTS AT WEST HUNTOON

Great Western Mining Corporation PLC (AIM: GWMO), which is exploring multiple precious and base metal prospects in Mineral County, Nevada, is pleased to announce the results of surface sampling at West Huntoon during spring 2025.

HIGHLIGHTS

- 1.07 g/t gold and 455 g/t silver from a sample at the Crowne Pointe granite extends a high-grade trend there to an 80 m strike length.
- A sample located in the far north of the Crowne Pointe granite outcrop returned 2.16 g/t gold, 34.2 g/t silver and 1.58% copper.
- Multiple samples in the range 0.1 - 0.2 g/t gold and 5-20 g/t silver.
- Seven samples around the Crowne Pointe granite outcrop contain copper grades of 0.18 - 0.31% copper, with an outlier at 0.68% copper.
- A single grab taken to the northwest of previous sampling contains 0.44% copper and 6.4 g/t silver.
- A single grab taken to the northeast of the granite outcrop area contains 56 g/t silver and 6.34% zinc.

Great Western Chairman Brian Hall commented: *"The West Huntoon area has the potential to be a major copper project as well as having an abundance of precious metal and other mineral indications. It is looking more and more exciting as we continue our field work and expand the mineralisation footprint."*

"We are currently preparing a summer drill programme which will include the Rhyolite Dome gold prospect on the Olympic Gold Project as well as several targets at West Huntoon. In the same general area as West Huntoon, later this month we will have a team in the field sampling surface tungsten indications around and between the Defender and Pine Crow tungsten workings. We will keep shareholders informed as we make progress."

BACKGROUND

West Huntoon is a group of claims on high ground to the west of the flat Huntoon Valley. In the hills on the other side of the valley is the M2 project where the Company has extensively drilled and already established an inferred copper resource. Directly south of M2 is the M4 prospect which the Company has also drilled and found positive indications of copper. Due to sedimentary cover, there are no surface indications of mineralisation on the floor of the valley and in due course this is likely to be drilled, in an attempt to establish connectivity right across the valley. West Huntoon and M2 are approximately 12 km apart which indicates the potential size of the copper prospect if connectivity can be established. The greater area has been designated the Huntoon Copper Project.

West Huntoon includes an abandoned gold mine (the Huntoon Mine) and in 2017 Great Western drilled a single scoping hole close to this mine, based on limited information, which recorded measurable grades of both gold and copper. Commencing in late 2023, the company launched a new initiative at West Huntoon, discovered a previously unknown outcrop of granite, commissioned a report on this granite which verifies the setting for a potential copper porphyry, carried out extensive soil sampling and also commissioned a geophysical (IP) survey which indicates continuity of copper where mineralisation disappears from sight under the valley floor sediments.

During the current quarter, Great Western will be drilling on the high ground at West Huntoon with an initial programme of 5 holes, each likely to be approximately 200 m in length, (1) aiming to establish that the consistent copper showings at surface across a large area are matched at depth and (2) to continue exploring the precious metals potential. The survey results below, acquired in collaboration with a team from the UK's Camborne School of Mines, analyse precious metals and other minerals found to be present in this complex and highly mineralised area.

WORK PROGRAMME

Great Western conducted a selective surface sampling programme at West Huntoon earlier this year, focused on potentially mineralised ground in the Crowne Pointe granite area, to which it holds rights under the previously announced Huntoon Mine Cooperation Agreement. This work was a follow-up to an earlier programme which recorded exceptionally high grades of silver and gold of up to 2,438 g/t Ag and 5.14 g/t Au. Other samples from around the wider area were taken as part of a field consultation and the academic collaboration with the Camborne School of Mines.

NOTABLE RESULTS

- A very high silver grade of 455 g/t Ag together with elevated gold of 1.07 g/t Au from a sample taken in the southern parts of the Crowne Pointe granite. Previous samples from this area included one with 2,438 g/t Ag & 5.53 g/t Au, situated 40 m to the southwest, and one with 102 g/t Ag & 4.51 g/t Au, taken a further 40 m to the southwest. These three samples together form an 80 m trend.
- A first sample from the far northern end of the Crowne Pointe granite returned 2.16 g/t gold, 34.2 g/t silver and 1.58% copper, showing that potential for an elevated precious metals zone occurs at a considerable distance from

the established zone in the southeastern portion.

- Multiple samples with elevated gold and silver values (0.1-0.2 g/t Au and 5-20 g/t Ag), mainly located adjacent to the high-grade samples in the southern tip of the Crowne Pointe granite.
- Widespread copper anomalism in the Crowne Point granite, with seven samples in the range 0.18 - 0.31% Cu, and an outlier at 0.68% Cu. These samples were selected from local surface showings of copper oxide mineralisation.
- Outside the granite area, a grab sample taken 180 m to the northwest of the nearest previous sample, from a local copper sulphide and oxide showing associated with a 1 m wide vein, returned 0.44% copper and 6.4 g/t silver. This sample again expands the prospectivity of the West Huntoon area.
- Also outside the granite area, 45 m upslope from the western margin of the Crowne Pointe granite, a sample from a breccia zone contained 56 g/t silver, 6.34% zinc, 0.51% Pb and 0.09% Cu.

These new results significantly expand the known footprint of mineralisation at West Huntoon, both within the Crowne Pointe granite area and in the surrounding host rocks. The repeated occurrence of high-grade silver and gold values along an emerging trend in the south of the Crowne Pointe granite, the identification of precious and base metal potential at the granite's northern extent and the presence of copper and polymetallic mineralisation outside the granite all point to a larger, more complex mineralising system than has previously been recognised. These findings will guide future exploration targeting.

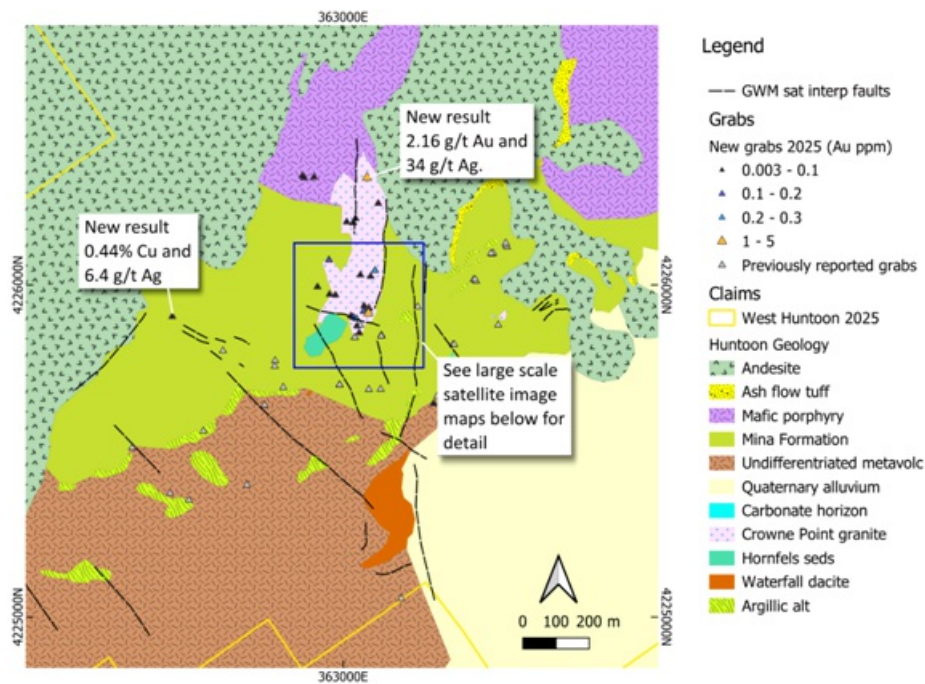


Figure 1. Geological map of central parts of West Huntoon claims, with distribution of new samples coloured by gold grade, and previously reported samples in grey. See figures below for detail of southern parts of the Crowne Pointe granite.

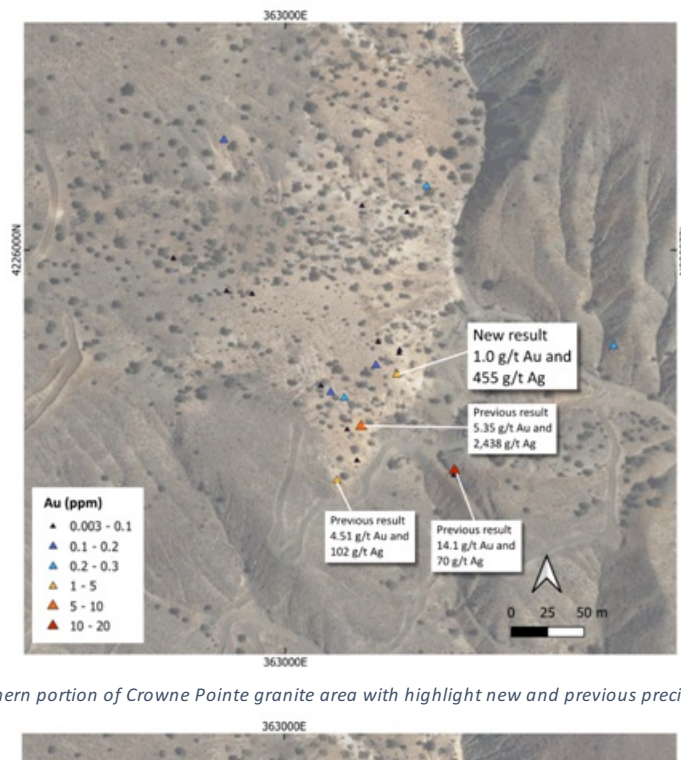


Figure 2. Southern portion of Crowne Pointe granite area with highlight new and previous precious metal results.

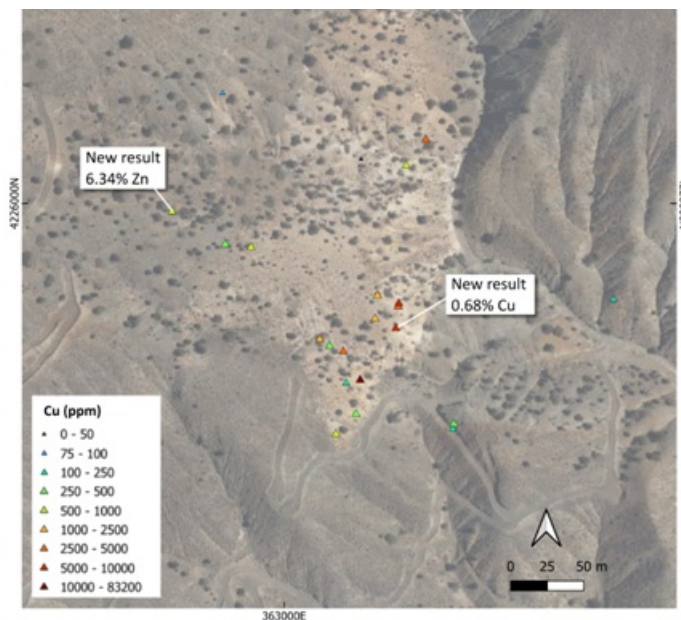


Figure 3. Southern portion of Crowne Pointe granite area with outlier base metal grades.

Table 1. Selected elemental abundances for results reported in this release

Sample_ID	X	Y	Au (ppm)	Ag (ppm)	As (ppm)	Bi (ppm)	Cu (ppm)	Mo (ppm)	Pb (ppm)	Sb (ppm)	Zn (ppm)
LC-GWHN-01	362486	4225905	bdl	6.4	44	1	4440	31	1	4	33
AA_GW01	363083	4226026	0.01	0.9	15	1	771	4	18	1	35
AA_GW02	363053	4226030	bdl	0.1	27	1	17	15	7	1	14
AA_GW03	362958	4226075	0.13	0.1	1	1	78	14	3	1	30
AA_GW04	363042	4225877	0.02	5.8	47	1	128	21	83	1	17
AA_GW05	363049	4225856	0.02	5	227	1	330	8	58	1	287
LC-GWHN-02	363073	4226323	2.16	34.2	68	11	15800	31	1	14	302
LC-GWHN-03	363097	4226044	0.21	8.9	24	6	2620	25	1	1	66
AA_GW08	363024	4225907	0.03	7.9	23	1	2080	17	291	12	295
AA_GW09	363078	4225930	0.02	5	40	1	2820	4	134	1	70
AA_GW10	363078	4225930	0.01	1.9	4	1	3140	24	84	1	64
AA_GW11	363062	4225921	0.16	7.9	56	1	1820	10	190	29	141
AA_GW12	363064	4225937	0.09	7.1	76	1	2470	19	158	12	66
AA_GW13	363076	4225915	1.07	455	492	55	6820	19	2480	108	394
AA_GW14	362977	4225970	0.01	2.4	35	1	669	10	44	5	25
AA_GW15	362960	4225972	0.03	16	33	1	324	0.5	99	7	22
AA_GW16	362923	4225994	0.09	56	2640	1	930	22	5070	67	63400
AA_GW17	363038	4226200	0.08	3.8	10	1	90	7	123	6	260
AA_GW18	363030	4226187	bdl	1.8	63	1	38	17	142	3	1510
AA_GW19	363011	4226190	bdl	1.1	1	1	26	16	12	3	57
AA_GW20	363106	4226246	0.04	0.5	119	1	44	26	38	1	120
AA_GW21	362877	4226329	0.01	1.1	1	1	29	13	8	3	37
AA_GW23	362883	4226323	0.01	0.7	1	591	90	18	43	1	648
AA_GW24	362913	4226325	0.01	0.9	1	1	26	7	12	1	15
LP_GW04	363273	4225643	bdl	0.3	1	1	7810	1	14	3	415
AA_GW06	363040	4225899	0.21	21.4	131	1	3010	11	1480	94	280
AA_GW07	363031	4225902	0.19	10.4	657	1	257	9	126	41	114

ADDITIONAL INFORMATION

All grab samples were analysed at Paragon Geochemical Laboratories, Reno, Nevada. A quality control standard sample was included in the batch by the company and results of this reviewed prior to release. Grab samples were analysed by method Au-FA30/AuAg-GR30 for gold (30 g fire assay, with gravimetric finish for overlimit samples) 35AR-OES for a 35-element suite via aqua regia digest and ICP-OES. The gold grade in the QC sample was within acceptable limits. Both the silver and copper grades were below three standard deviations from the expected value, indicating that results reported here are likely conservative.

QUALIFIED PERSON STATEMENT

The information in this announcement that relates to exploration results is based on information reviewed by Dr James Blight MGeol PhD MAusIMM who is Chief Geologist of Great Western Mining Corporation PLC. Dr Blight is a "Qualified Person" as defined in the "Note for Mining and Oil & Gas Companies" which form part of the AIM Rules for Companies. Dr Blight has reviewed and consented to the inclusion in the announcement of the information in the form and context in which it appears.

For Further Information:

Great Western Mining Corporation PLC

Brian Hall, Chairman

+44 207 933 8780

Max Williams, Finance Director

+44 207 933 8780

Davy (NOMAD, Euronext Growth Listing Sponsor & Joint Broker)

+353 1 679 6363

SP Angel Corporate Finance LLP (Joint Broker)

Ewan Leggat/Devik Mehta

+44 203 470 0470

Shard Capital Partners

Andrew Gutmann/Erik Woolgar

+44 207 186 9008

Walbrook PR (PR advisers)

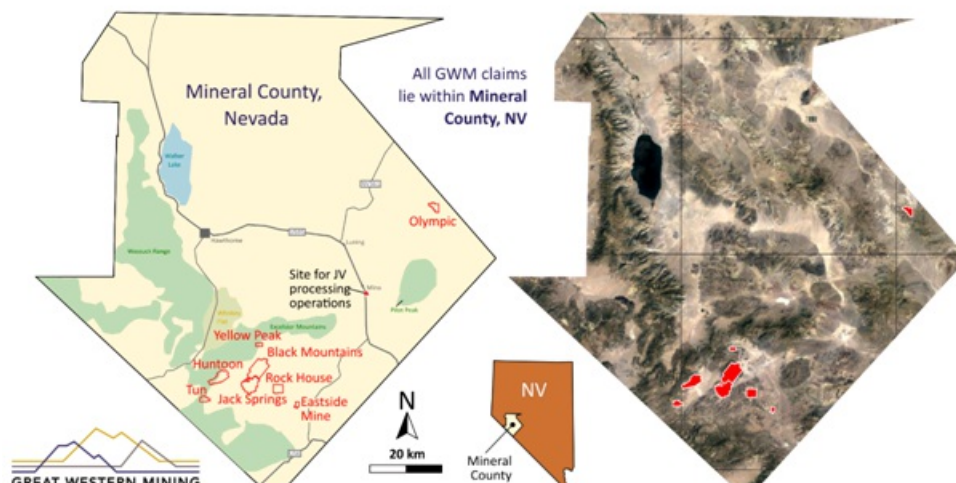
Nick Rome/Joseph Walker

+44 207 933 8783

Notes to Editors

The Company has a large tract of acreage in Mineral County, Nevada. The area consists of rugged, mountainous terrain, which means that large parts of it remain under-explored. Mineral potential is hosted by the regional Walker Lane Structural Belt, the largest structural and metallogenic belt in Nevada, yet one of the least explored in recent times, with gold, silver and copper currently produced in Mineral County. Great Western has seven distinct concession areas which offer the potential for exploiting (1) short term gold and silver deposits and (2) long-term, world-class copper deposits.

Six of the Company's properties are in the west of Mineral County and the seventh and most recent acquisition, the Olympic Gold Project, is in the east of the county, some 50 miles from the main group. All the Company's claims are 100% owned. Claims at the Eastside Mine Group have been contributed to a pooling agreement with Bronco Creek Exploration, Inc. and in addition the Company participates in the Huntoon Mine Area Cooperation Agreement with landowner-neighbour Crowne Point Resources with whom it shares resources. Great Western's small exploration team is supported by locally based consultants and contractors.



The state of Nevada is one of the world's most mining friendly jurisdictions. While tightly regulated and environmentally conscious, Nevada welcomes the mining industry. Great Western takes care to ensure that its claims are maintained in good standing and all regulations observed.

There are numerous gold and silver prospects on the Company's acreage, including extensive historic mine workings which offer the opportunity for secondary recovery. The Company is party to a 50-50 joint venture known as Western Milling LLC which is constructing a mill to process pre-mined material for secondary recovery of gold and silver.

Furthermore, through extensive drilling over a five-year period, GWM has established a Mineral Resource on its first target area known as M2, of 4.3 million tonnes at 0.45% copper, for 19,000 tonnes of contained copper metal. This resource has been independently reported in accordance with JORC guidelines.

GWM has also established an Inferred Resource Estimate of 31,000 tonnes grading 1.6 g/t gold and 3.0 g/t silver in tailings associated with the OMCO Mine at the Olympic Gold Project. Additionally, exploration targets have been independently reported as follows:

- 3,400 - 6,400 tonnes grading between 0.5 and 1.2 g/t Au and 1.2 and 2.1 g/t Ag in the substrate beneath the tailings volume at the Olympic Mine.
- 9,000 - 12,000 tonnes grading between 0.9 and 2.4 g/t Au and 2.0 and 5.1 g/t Ag in a coarse stockpile at Olympic Mine.
- 4,200 - 7,700 tonnes grading between 40 and 140 g/t Ag and 0.3 and 0.3 g/t Au in spoil heaps at Mineral

Jackpot.

This information is provided by RNS, the news service of the London Stock Exchange. RNS is approved by the Financial Conduct Authority to act as a Primary Information Provider in the United Kingdom. Terms and conditions relating to the use and distribution of this information may apply. For further information, please contact ms@seg.com or visit www.ms.com.

RNS may use your IP address to confirm compliance with the terms and conditions, to analyse how you engage with the information contained in this communication, and to share such analysis on an anonymised basis with others as part of our commercial services. For further information about how RNS and the London Stock Exchange use the personal data you provide us, please see our [Privacy Policy](#).

END

DRLURABRVNUNOAR