

1 September 2025

## Cloudbreak Discovery Plc

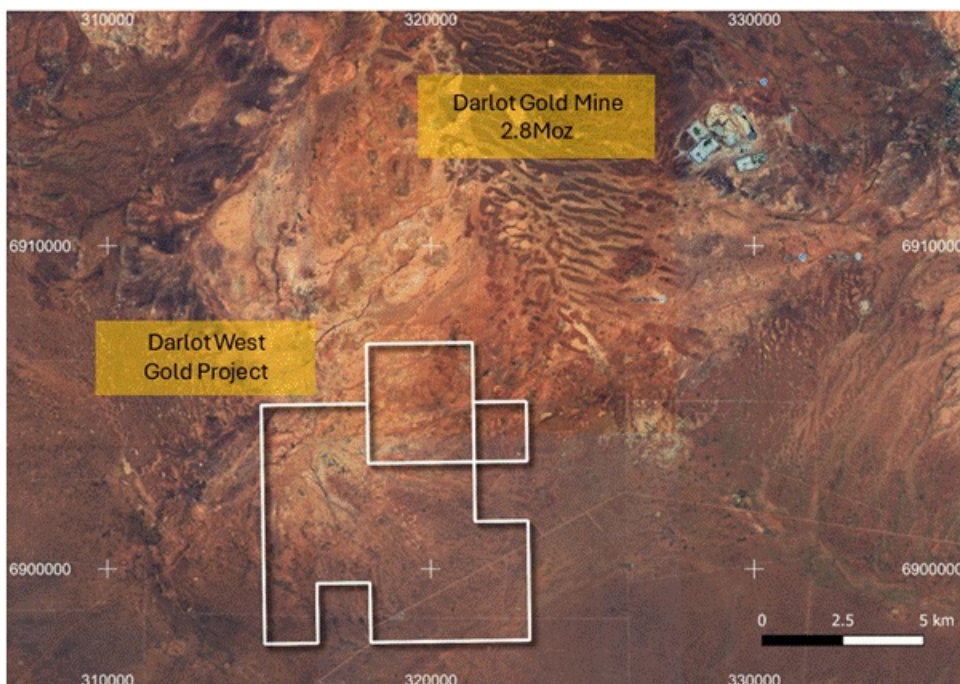
('Cloudbreak', or 'the Company')

### Work Starts on Expanded Darlot West Gold Asset

**Cloudbreak Discovery Plc (LSE: CDL)**, a London Stock Exchange Main Market listed company, is pleased to announce that exploration over the expanded Darlot West Gold Project ("Darlot West"), covering 60.6km<sup>2</sup>, is underway. Darlot West (**Figure 1**) is located only 10km southwest of the iconic Darlot Gold Mine in Western Australia with 2.8 million ounces of gold produced to date.

The increased tenure, as announced on 26 August 2025, includes ~7km of additional strike of greenstone belt, the host to where Cloudbreak recently discovered up to 28.62g/t Au from surface rock chip sampling, as announced on 21 August 2025.

To expand on the first pass rock chip sampling program that delivered the 28.62g/t Au result, a 3-man field crew will now expand rock chipping, complete field mapping, and undertake geochemical soil sampling, with the aim of further refining the project towards drill targeting.



**Figure 1: Location of Darlot West Gold Project, Western Australia - 10km from 2.8Moz Darlot Gold Mine**

*Tom Evans, Cloudbreak's MD, commented: "It is great to get on the ground again so soon after announcing the expansion of the Darlot West Gold Project to 60.6km<sup>2</sup>, with samples up to 28.62g/t Au to be followed up. The 3-man field crew will undertake expanded rock chipping, complete field mapping, and undertake geochemical soil sampling, with the aim of further refining the project towards drill targeting. I look forward to updates from the field crew on progress, and updating shareholders as results come to hand."*

*This announcement contains information which, prior to its disclosure, was inside information as stipulated under Regulation 11 of the Market Abuse (Amendment) (EU Exit) Regulations 2019/310 (as amended).*

**For additional information please contact:**

<b>Cloudbreak Discovery PLC</b>	Peter Huljich, Chairman Tom Evans, Managing Director	Tel: +44 207 887 6139 Tel: +44 7851 703440
<b>Novum Securities</b> (Financial Adviser)	David Coffman / Anastassiya Eley	Tel: +44 7399 9400

#### **About Cloudbreak Discovery PLC**

Cloudbreak Discovery PLC is a leading natural resource explorer and project generator. Cloudbreak is focused on mineral exploration and energy opportunities with the aim of bringing near-term cashflow and driving shareholder value.

Through its wholly owned but independently operated subsidiaries, the Company will develop its array of mineral assets, whilst continuing to generate new projects with a particular focus on commodities with high intrinsic value.

Cloudbreak's generative model across the mineral sector enables a multi-asset approach to investing. in the commodity cycle.

- Ends -

This information is provided by RNS, the news service of the London Stock Exchange. RNS is approved by the Financial Conduct Authority to act as a Primary Information Provider in the United Kingdom. Terms and conditions relating to the use and distribution of this information may apply. For further information, please contact [ms@seg.com](mailto:ms@seg.com) or visit [www.ms.com](http://www.ms.com).

RNS may use your IP address to confirm compliance with the terms and conditions, to analyse how you engage with the information contained in this communication, and to share such analysis on an anonymised basis with others as part of our commercial services. For further information about how RNS and the London Stock Exchange use the personal data you provide us, please see our [Privacy Policy](#).

END

UPDBSGDICSDDGUC