

26 January 2026

## Cloudbreak Discovery Plc

('Cloudbreak', or 'the Company')

### Silver and Gold Grades for Crofton Gold Project

New grades report up to of 142 g/t gold and 175 g/t silver

Cloudbreak Discovery Plc (LSE: CDL), a London Stock Exchange Main Market listed company, is very pleased to announce that further gold assay results up to **142 g/t Au (or 4.5 ounces per tonne gold)** and along with silver results up to **175g/t Ag (or 5.6 ounce per tonne silver)** have now been recieved from multi-element assay and fire assay, from the site visit to the Crofton Gold Project ("Crofton"). Crofton is located 120 kilometres east-southeast of the famous Australian gold mining centre of Marble Bar and 75km northeast of the mining centre town of Nullagine, in the Pilbara region of Western Australia (**Figure 1**).

#### Highlights

- o 14 samples over 1g/t Au with Ag using Multielement and Fire assay include:
  - o 10.8 g/t Au, and 12.1 g/t Ag (CR0018)
  - o 15.3 g/t Au, and 9.82 g/t Ag (CR0022)
  - o 8.01 g/t Au, and 10.4 g/t Ag (CR0023)
  - o 9.27 g/t Au, and 21.2 g/t Ag (CR0024)
  - o 22.5 g/t Au, and 27.9 g/t Ag (CR0025)
  - o 6.03 g/t Au, and 3.04 g/t Ag (CR0033)
  - o 1.8 g/t Au, and 8.59 g/t Ag (CR0035)
  - o 9.82 g/t Au, and 18.75 g/t Ag (CR0038)
  - o 2.01 g/t Au, and 5.4 g/t Ag (CR0039)
  - o 4.82 g/t Au, and 6.27 g/t Ag (CR0040)
  - o 4.81 g/t Au, and 9.31 g/t Ag (CR0041)
  - o 39.5 g/t Au, and 44.4 g/t Ag (CR0043)
  - o **142 g/t Au, and 175 g/t Ag** (CR0044)
  - o 1.85 g/t Au, and 1.51 g/t Ag (CR0046)
  
- o 15 samples over 1g/t Au using Photon Assay support previous work and include:
  - o 10.89 g/t Au (CR0018)
  - o 1.13 g/t Au (CR0021)
  - o 6.42 g/t Au (CR0022)
  - o 8.87 g/t Au (CR0023)
  - o 9.48 g/t Au (CR0024)
  - o 29.34 g/t Au (CR0025)
  - o 10.23 g/t Au (CR0033)
  - o 1.89 g/t Au (CR0035)
  - o 14.15 g/t Au (CR0038)
  - o 2.82 g/t Au (CR0039)
  - o 4.99 g/t Au (CR0040)
  - o 7.19 g/t Au (CR0041)
  - o 40.62 g/t Au (CR0043)

- o 162.35 g/t Au (CR0044)
- o 2.57 g/t Au (CR0046)

o Previous samples from Crofton included:

- o 48.63 g/t Au (RBR015)
- o 62.48 g/t Au (RBR017)
- o 20.61 g/t Au (RBR020)
- o 12.24 g/t Au (RBR021)
- o 253.59 g/t Au (RBR022)
- o 195.53 g/t Au (RBR028)
- o 10.22 g/t Au (RBR030)
- o 2.78 g/t Au (RBR032)

***Tom Evans, Cloudbreak's MD, commented; "These surface results are outstanding and to see the high tenor of gold grades and now these very exciting silver grades, we are very optimistic of the potential for discovery here at Crofton. Silver and gold prices are now at historic highs, which makes Crofton an very exciting project for the Company."***

These assay results confirm the high tenor of the gold mineralisation at Crofton and is now establishing a mathematical relationship between Photon and Fire assay for gold - both of which can be used for JORC reporting purposes - and the multi-element results now confirms the presence of very significant silver grades. From the results received to date, we can now see that silver values are high where we have high gold values, but we can also see silver values where there is no gold. Further exploration on site this quarter will refine the relationship between gold and silver.

### **Sampling Results**

Crofton hosts an approximately 20km<sup>2</sup> area of laterally extensive quartz veining hosted within the Yilgalong granite. Quartz veins are commonly 10's of metres wide and can be seen to extend along strike for 100's to 1,000's of metres. A total of 54 samples were taken around locations of previously reported gold results and along strike.

Initial work was focused on sampling areas of historically reported gold mineralisation where grades of up to 253 g/t Au have been historically reported. Gold grades > 1 g/t and up to 162.35 g/t have now been confirmed over a 1km x 4km area. The multi-element results and Fire assay being reported in this release confirm the tenor of gold mineralisation and also show the high levels of silver up to 175 g/t Ag. This, paired with historical >25 ppb Au soil anomalism, indicates that the Crofton project warrants immediate follow-up in the form of systematic surface geochemical sampling programs and has the

immediate follow-up in the form of systematic surface geochemical sampling programs and has the potential to host economic quantities of vein-hosted gold and silver mineralisation.

### **About the Crofton Gold Project**

Crofton hosts a large area of hydrothermal alteration within the Yilgalong Granitoid associated with a suite of prominent quartz veins. Historical exploration has been limited to surface sampling programs of stream sediment, soil and rock chip sampling.

The Company will hold a 100% interest in the Crofton property, which consists of one exploration licence application E45/6690 covering 57km<sup>2</sup>. The Crofton licence covers much of the Boodalyerrie Mining Centre, which has recorded production from 1901 to 1910 of 588.4 ounces gold from 122 tonnes of ore at a reconciled average grade of 150g/t gold.

*This announcement contains information which, prior to its disclosure, was inside information as stipulated under Regulation 11 of the Market Abuse (Amendment) (EU Exit) Regulations 2019/310 (as amended).*

**-END-**

### **For additional information please contact:**

<b>Cloudbreak Discovery PLC</b>	<b>Peter Huljich, Chairman Tom Evans, Managing Director</b>	<b>Tel: +44 207 887 6139 Tel: +44 7851 703440</b>
<b>AlbR Capital Limited (Financial Adviser)</b>	<b>David Coffman / Dan Harris</b>	<b>Tel: +44 207 469 0930</b>
<b>Marex Financial (Broker)</b>	<b>Angelo Sofocleous / Keith Swann / Matt Bailey</b>	<b>Tel: +44 (0) 207 655 6000 Email: corporate@marex.com</b>

### **About Cloudbreak Discovery PLC**

Cloudbreak Discovery PLC is a leading gold, precious and base metals resource explorer. Cloudbreak is focused on mineral exploration in Western Australia with the aim of bringing near-term cashflow and driving shareholder value.

Through its wholly owned subsidiaries, the Company will develop its array of mineral assets, whilst continuing to generate new projects with a particular focus on commodities with high intrinsic value.

Cloudbreak's generative model across the mineral sector enables a multi-asset approach to investing in the commodity cycle.

### **Competent Persons Statement**

The Information in this report that relates to exploration results, mineral resources or ore reserves is based on information compiled by Mr Edward Mead, who is a Fellow of the Australasian Institute of Mining and Metallurgy. Mr Mead is a consultant to Cloudbreak Discovery Plc and employed by Doralada Pty Ltd. Mr Mead has sufficient experience which is relevant to the style of mineralisation and type of deposits under consideration and to the activity that he is undertaking to qualify as a Competent Person as defined in the 2012 edition of the 'Australian Code for Reporting Exploration Results, Mineral Resources and Ore Reserves' (the JORC Code). Mr Mead consents to the inclusion of this information in the form and context in which it appears in this report.

**Table 1: Gold Assay results utilising Photon Assay, an industry wide and standard assay technique for gold only**

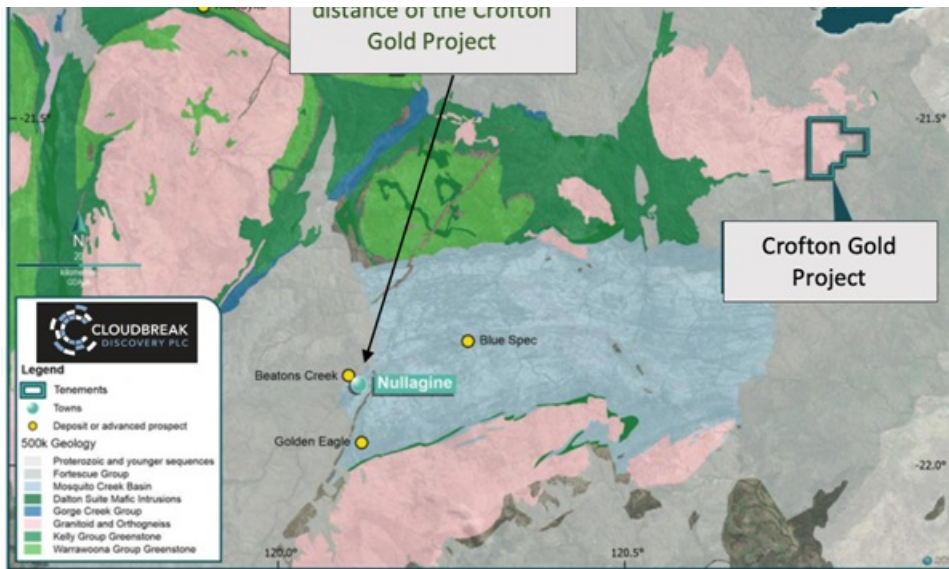
<b>Sample</b>	<b>Au ppm</b>
CR0001	<0.03
CR0002	<0.03

Sample	Au ppm
CR0002	<0.03
CR0003	<0.03
CR0004	<0.03
CR0005	<0.03
CR0006	<0.03
CR0007	<0.03
CR0008	<0.03
CR0009	0.06
CR0010	<0.03
CR0011	<0.03
CR0012	<0.03
CR0013	0.07
CR0014	<0.03
CR0015	0.61
CR0016	0.09
CR0017	0.33
CR0018	<b>10.89</b>
CR0019	0.09
CR0020	<0.03
CR0021	<b>1.13</b>
CR0022	<b>6.42</b>
CR0023	<b>8.87</b>
CR0024	<b>9.48</b>
CR0025	<b>29.34</b>
CR0026	<0.03
CR0027	0.09
CR0028	0.12
CR0029	0.15
CR0030	0.22
CR0031	0.06
CR0032	<0.03
CR0033	<b>10.23</b>
CR0034	<0.03
CR0035	<b>1.89</b>
CR0036	<0.03
CR0037	<0.03
CR0038	<b>14.15</b>
CR0039	<b>2.82</b>
CR0040	<b>4.99</b>
CR0041	<b>7.19</b>
CR0042	0.04
CR0043	<b>40.62</b>
CR0044	<b>162.35</b>
CR0045	0.08
CR0046	<b>2.57</b>
CR0047	0.45
CR0048	0.17
CR0049	<0.03
CR0050	0.07
CR0051	0.05
CR0052	<0.03
CR0053	0.04
CR0054	0.2

**Table 2: Multi element ICP assay including 4 acid digest and Fire assay gold, reporting gold and silver.**

Sample #	Au ppm	Ag ppm
CR0001	0.01	0.87
CR0002	<0.01	0.11
CR0003	<0.01	2.2
CR0004	<0.01	0.48
CR0005	<0.01	0.29
CR0006	<0.01	0.26
CR0007	<0.01	0.4
CR0008	<0.01	0.02
CR0009	0.05	17.2
CR0010	<0.01	0.18
CR0011	0.02	7.58
CR0012	0.03	28.3
CR0013	0.06	46.9
CR0014	<0.01	0.63
CR0015	0.53	1.05
CR0016	0.09	2.12
CR0017	0.35	2.15
CR0018	<b>10.8</b>	<b>12.1</b>
CR0019	0.08	0.3
CR0020	<0.01	0.21
CR0021	0.99	0.76
CR0022	<b>15.3</b>	<b>9.82</b>
CR0023	<b>8.01</b>	<b>10.4</b>
CR0024	<b>9.27</b>	<b>21.2</b>
CR0025	<b>22.5</b>	<b>27.9</b>
CR0026	0.03	0.11
CR0027	0.05	2.83
CR0028	0.11	4.45
CR0029	0.15	1.98
CR0030	0.21	0.85
CR0031	0.06	0.28
CR0032	0.04	1.46
CR0033	6.03	3.04
CR0034	0.02	1.83
CR0035	<b>1.8</b>	<b>8.59</b>
CR0036	0.01	0.05
CR0037	<0.01	0.18
CR0038	<b>9.82</b>	<b>18.75</b>
CR0039	<b>2.01</b>	<b>5.4</b>
CR0040	<b>4.82</b>	<b>6.27</b>
CR0041	<b>4.81</b>	<b>9.31</b>
CR0042	0.04	0.1
CR0043	<b>39.5</b>	<b>44.4</b>
CR0044	<b>142</b>	<b>175</b>
CR0045	0.14	0.25
CR0046	<b>1.85</b>	<b>1.51</b>
CR0047	0.34	0.97
CR0048	0.22	0.21
CR0049	0.02	0.41
CR0050	0.06	0.08
CR0051	0.05	0.08
CR0052	0.13	0.59
CR0053	0.67	1.72
CR0054	0.18	1.42





**Figure 1: Location of the Crofton Gold project to towns in the district, gold processing plants and gold mines.**

This information is provided by RNS, the news service of the London Stock Exchange. RNS is approved by the Financial Conduct Authority to act as a Primary Information Provider in the United Kingdom. Terms and conditions relating to the use and distribution of this information may apply. For further information, please contact [ms@seg.com](mailto:ms@seg.com) or visit [www.ms.com](http://www.ms.com).

RNS may use your IP address to confirm compliance with the terms and conditions, to analyse how you engage with the information contained in this communication, and to share such analysis on an anonymised basis with others as part of our commercial services. For further information about how RNS and the London Stock Exchange use the personal data you provide us, please see our [Privacy Policy](#).

END

TSTMZGZMLKRGVZM