

普星能量有限公司

PUXING ENERGY LIMITED

(Incorporated in the Cayman Islands with limited liability 於開曼群島註冊成立的有限公司)

Stock Code 股份代號：00090

2025

ENVIRONMENTAL,
SOCIAL AND
GOVERNANCE REPORT

環境、社會及
管治報告



CONTENTS 目錄

2	About the Group 關於本集團	30	Environmental Protection 環境保護
4	About this Report 關於本報告	56	Employee Care 員工關懷
7	Message from the Directors 董事寄語	75	Operation Responsibility 營運責任
9	ESG Statement of the Board 董事會ESG聲明	86	Co-Building the Community 社區共建
11	Corporate Governance 企業管治	89	Appendix 附錄
12	ESG Governance ESG管治		

ABOUT THE GROUP

關於本集團

Puxing Energy Limited (hereinafter referred to as the “Company” or “Puxing Energy”, together with its subsidiaries, collectively, “we,” “us,” “our” or the “Group”) is mainly engaged in the development, operation and management of natural gas-fired power plants in the People’s Republic of China (hereinafter referred to as the “PRC” or “China”). The five gas-fired power plants wholly owned by the Group in Zhejiang Province, the PRC, include Puxing (Anji) Gas Turbine Thermal Power Co., Ltd. (“Anji Power Plant”), Zhejiang Puxing Jingxing Natural Gas Power Co., Ltd. (“Jingxing Power Plant”), Shunfa Deneng (Deqing) Power Co., Ltd.* (with previous name as Zhejiang Puxing Deneng Natural Gas Power Co., Ltd.* (“Deneng Power Plant”)), Zhejiang Puxing Bluesky Natural Gas Power Co., Ltd. (“Bluesky Power Plant”) and Shunfa (Quzhou) Thermal Power Co., Ltd.* (with previous name as Quzhou Puxing Gas Turbine Thermal Power Co., Ltd.* (“Quzhou Power Plant”)). Among which, Quzhou Power Plant and Deneng Power Plant ceased to be power plants owned by the Group from June 2025 due to business adjustment. These five power plants (collectively referred to as the “Operating Stations”, each an “Operating Station”, in this Report) are operated as peaking power plants, which are mainly responsible for arranging generation units for power generation to meet the peak demand of the power grid in accordance with the requirements of the relevant government authorities in Zhejiang Province. In addition, apart from power generation business, Anji Power Plant and Quzhou Power Plant under the Group carry out heating business that provide steam to nearby manufacturers through heating pipes. Bluesky Power Plant, Jingxing Power Plant, Anji Power Plant and Quzhou Power Plant under the Group have established photovoltaic power generation units, which are mainly used to supplement the self-consumption electricity of the power plants, and the remainder will be sold to the power grid.

普星能量有限公司 (簡稱「本公司」或「普星能量」, 連同其附屬公司統稱「我們」或「本集團」) 主要在中華人民共和國 (簡稱「中國」) 從事以天然氣為燃料的電廠建設、經營及管理。本集團於中國浙江省內全資擁有五家燃氣電廠, 包括: 普星 (安吉) 燃機熱電有限公司 (簡稱「安吉電廠」)、浙江普星京興然氣發電有限公司 (簡稱「京興電廠」)、順發德能 (德清) 電力有限公司 (前稱浙江普星德能然氣發電有限公司, (簡稱「德能電廠」))、浙江普星藍天然氣發電有限公司 (簡稱「藍天電廠」) 及順發 (衢州) 熱電有限公司 (前稱衢州普星燃機熱電有限公司, (簡稱「衢州電廠」)), 其中衢州電廠和德能電廠因業務調整, 於2025年6月開始不再屬於集團擁有電廠。五家燃氣電廠 (於本報告內統稱「各營運點」) 皆為調峰電廠, 主要負責按照浙江省相關政府部門電網頂峰要求安排發電機組發電。此外, 除了發電業務, 本集團的安吉電廠及衢州電廠設有供熱業務, 透過供熱管道向附近廠家提供蒸汽。本集團的藍天電廠、京興電廠、安吉電廠及衢州電廠設有光伏發電機組, 主要用作補充電廠自用電量, 剩餘部份出售予電網。

ABOUT THE GROUP (CONTINUED)

關於本集團 (續)

The aggregate installed capacity of these five power plants of the Group amounted to 688.07 megawatts (MW) (2024: 688.07 MW, 2023: 688.07 MW), including 1,072 kilowatts (kW) in aggregate of photovoltaic power generating units of Bluesky Power Plant, Jingxing Power Plant, Anji Power Plant and Quzhou Power Plant. After disposal of Quzhou Power Plant and Deneng Power Plant, the aggregate installed capacity of the remaining three power plants of the Group amounted to 345.92 MW, including 919 kW of photovoltaic power generating units. The total amount of electricity generated by photovoltaic power generation for the financial year from 1 January 2025 to 31 December 2025 (hereinafter referred to as the “Year”) was equivalent to a reduction of carbon dioxide (CO₂) emissions of 541 tonnes, representing a decrease of approximately 4% over the reduction in CO₂ emissions due to photovoltaic power generation last year.

本集團五家電廠總裝機容量達688.07兆瓦（2024年：688.07兆瓦，2023年：688.07兆瓦），當中包括了藍天電廠、京興電廠、安吉電廠及衢州電廠合共1,072千瓦的光伏發電機組。出售衢州電廠和德能電廠後，本集團三家電廠總裝機容量達345.92兆瓦，其中包括了919千瓦的光伏發電機組。於二零二五年一月一日至二零二五年十二月三十一日之財政年度（簡稱「本年度」或「年內」）由光伏發電產生的總發電量相當於減少了541公噸的二氧化碳排放，較去年光伏發電所減少的二氧化碳排放量減少約4%。

Energy supply of the Group for the Year 本集團年度供能	2025 2025年	2024 2024年	Unit 單位
Natural gas power generation 天然氣發電量	170,358	305,664	MWh 兆瓦時
Electricity generated by natural gas power sold 天然氣發電出售電量	166,853	288,946	MWh 兆瓦時
Heat generated by natural gas ¹ 天然氣供熱量 ¹	94,584	121,745	tonnes 公噸
Heat generated by natural gas sold 天然氣售熱量	70,282	107,228	tonnes 公噸
Photovoltaic power generation ² 光伏發電量 ²	1,020	1,059	MWh 兆瓦時
Electricity generated by photovoltaic power sold ³ 光伏發電出售電量 ³	122	93	MWh 兆瓦時

¹ Only Anji Power Plant and Quzhou Power Plant are engaged in natural gas heating.

² Only Bluesky Power Plant, Jingxing Power Plant, Anji Power Plant and Quzhou Power Plant are equipped with photovoltaic power generating units.

³ Jingxing Power Plant and Bluesky Power Plant sell the electricity from photovoltaic power generation, while the electricity from photovoltaic power generation at Anji Power Plant and Quzhou Power Plant is for self-consumption only.

¹ 僅安吉電廠及衢州電廠涉及天然氣發熱。

² 僅藍天電廠、京興電廠、安吉電廠及衢州電廠設有光伏發電機組。

³ 京興電廠及藍天電廠有外售光伏發電的電力，而安吉電廠及衢州電廠的光伏發電電力僅供自用。

ABOUT THIS REPORT

關於本報告

This is the tenth Environmental, Social and Governance Report (hereinafter referred to as the “Report”) published by the Group. This Report details the Group’s philosophy on sustainable development, presents the stakeholders with the policies and initiatives on sustainable development implemented by the Group and its progress and performance during the Year to improve stakeholders’ understanding and confidence on the Group.

REPORTING SCOPE

Time Frame

This Report is complementary to the Group’s 2025 Annual Report, and it reports the Group’s Environmental, Social and Governance (“ESG”) performance during the Year, of which part of the content can be traced back to the previous year or extended to the disclosure date of the Report. For details of corporate governance, please refer to the “Corporate Governance Report” contained in the 2025 Annual Report of the Group.

Geographical Scope

During the Year, this Report reports the annual performance related to power generation and heating business of the Group’s Operating Stations in Zhejiang Province. This Report does not include other operations of the Group (such as its principal place of business in Hong Kong and its subsidiary namely Wenling Juneng Wind Power Generation Co., Ltd.). The Group will regularly review the reporting scope to provide investors and other stakeholders with more accurate and comprehensive information.

本報告為本集團發佈的第十份《環境、社會及管治報告》(簡稱「本報告」)。本報告詳述本集團可持續發展的理念，向持份者呈現本集團所落實的可持續發展政策及措施，以及年內的進展及表現，以增強持份者對本集團的了解與信心。

報告範圍

時間範圍

本報告與本集團二零二五年年度報告相輔相成，匯報本集團於本年度的環境、社會及管治(簡稱「ESG」)表現(部分內容追溯至以前年度或延伸至報告披露日)。有關企業管治的詳細內容，請參閱本集團二零二五年年度報告的《企業管治報告》。

地理範圍

本年度，本報告匯報本集團於浙江省各營運點的發電及供熱業務全年之表現。本報告尚未涵蓋本集團其他營運(如：位於香港的主要營業地點及附屬公司溫嶺聚能風力發電有限公司)。本集團將定期檢視報告範圍，為投資者及其他持份者提供更準確及全面的信息。

ABOUT THIS REPORT (CONTINUED)

關於本報告 (續)

REPORTING GUIDELINES

This Report is prepared in accordance with the “Environmental, Social and Governance Reporting Code” (the “ESG Code”) in Appendix C2 of the Main Board Listing Rules (the “Listing Rules”) issued by The Hong Kong Stock Exchange (the “Stock Exchange”) and has been prepared on the basis of the four reporting principles set out therein, namely materiality, quantitative, balance and consistency. A complete content index is attached to the last chapter of this Report for easy reference by readers to the ESG Code when reading this Report. Unless otherwise stated, the currencies involved in this Report are all measured in Renminbi (RMB).

報告準則

本報告依循香港聯合交易所有限公司（簡稱「聯交所」）發佈的《主板上市規則》（簡稱「《上市規則》」）附錄C2《環境、社會及管治報告守則》（簡稱「《ESG守則》」），並以其載列的四項匯報原則，包括：重要性、量化、平衡及一致性作為本報告的編寫基礎。本報告最後一章附有完整索引，以便讀者按《ESG守則》閱讀本報告。如無特別說明，本報告中涉及的貨幣均以人民幣為計量單位。

REPORTING PRINCIPLE 匯報原則

APPLICATION IN THIS REPORT 在本報告中的應用

Materiality 重要性

The Group determined the major ESG issues through stakeholders’ survey and materiality assessment, and the relevant process and results were disclosed in the section headed “Materiality Assessment” in the “ESG Governance” of this Report. 本集團透過持份者調研問卷和重要性評估確定主要ESG議題，相關過程與結果已經在本報告「ESG管治」中的「重要性評估」一節披露。

Quantitative 量化

Quantitative information is recorded, estimated and disclosed by the Group and compared with previous performance where applicable. The Group has engaged an independent professional consultant to conduct a carbon assessment and other environmental KPIs estimates in accordance with the Chinese national standard of “Guidelines for Accounting and Reporting the Greenhouse Gas Emission – Part I: Power Plants” and international standards, such as ISO14064-1 and Greenhouse Gas Protocol. The information on the social KPIs in this Report was sourced from the statistical records of the relevant departments of the Group. 本集團對量化數據做出記錄、估算及披露，並在可行情況下，與過往績效進行比較。本集團已委託專業獨立顧問進行碳評估及其他環境關鍵績效估算，碳評估乃根據中國國家標準《溫室氣體排放核算與報告要求第1部分：發電企業》以及ISO14064-1和溫室氣體盤查議定書等國際標準進行。本報告的社會關鍵績效指標則來自本集團相關部門的統計記錄。

ABOUT THIS REPORT (CONTINUED)

關於本報告 (續)

REPORTING PRINCIPLE 匯報原則	APPLICATION IN THIS REPORT 在本報告中的應用
Balance 平衡	This Report is reported in an impartial manner to ensure that information disclosed faithfully reflects the results, challenges and solutions of the Group in ESG aspects. 本報告以不偏不倚的方式進行匯報，確保披露的信息如實反映本集團於ESG方面的成果、挑戰以及解決方案。
Consistency 一致性	Where feasible, the Group uses consistent statistical methods to allow meaningful comparisons of ESG data over time. If there are any changes that may affect the comparison with previous reports, the Group will include annotations to the corresponding contents in this Report to explain the reasons for corresponding changes. 本集團在可行情況下使用一致的統計方法，讓ESG數據可於日後作有意義的比較。如有任何可能影響與過往報告作比較的變更，本集團將於本報告相應內容加入批註，以解釋作相應變更的原因。

CONFIRMATION AND APPROVAL

All information referred to in this Report is derived from the official internal files and statistics of the Group, as well as the management and operation information collected according to the policies of the Group.

PUBLICATION CYCLE

The publication cycle of this Report is once per year.

PUBLICATION FORM

This Report is prepared in both Chinese and English. In case of discrepancies between the Chinese and English version, the Chinese version shall prevail. This Report is published on the websites of the Stock Exchange (www.hkexnews.hk) and the Company (www.puxing-energy.com).

FEEDBACK

The feedback from stakeholders will help the Group to establish a better governance and strategy for sustainable development in the future. Should you have any enquiries or suggestions on the contents of this Report, please feel free to contact the Group by email at info@puxing-energy.com.

確認及批准

本報告所引用的資料均來自本集團的正式內部檔案、統計數據，以及根據本集團制度所收集的管理和營運數據。

發佈週期

本報告發佈週期為每年一次。

發佈形式

本報告以中、英文編寫，如中文版與英文版存在歧義，概以中文版版本為準。本報告已刊載於聯交所網站(www.hkexnews.hk)及本公司網站(www.puxing-energy.com)。

意見反饋

持份者的意見有助本集團未來建立更完善的可持續發展管治及策略，如閣下對本報告的內容有任何意見或建議，歡迎透過電郵 (info@puxing-energy.com) 與本集團聯絡。

MESSAGE FROM THE DIRECTORS

董事寄語

To all stakeholders,

The year 2025 marks the final year of China's "14th Five-Year Plan", and is also a year brimming with both opportunities and challenges. During the 14th Five-Year Plan period, China has accelerated its pace of green and low-carbon transformation, and people's demands for a better life have continued to rise. While aligning with national industrial policies and sustainable development strategies, the peaking power plants under the Group have actively advanced ESG initiatives.

ENVIRONMENTAL PROTECTION: JOINTLY PAINTING AN ECOLOGICAL PICTURE

Protecting the environment and conserving resources are fundamental national policies of China and have long been the environmentally friendly development strategies upheld by the Group. We have consistently implemented various environmental protection measures, establishing energy conservation and water conservation leadership teams at our power plants. We have established the energy-saving and consumption reduction target responsibility system, encouraging and guiding resource conservation. Additionally, we promote green office practices in daily operations, achieving a synergy between environmental and economic benefits.

EMPLOYEE CARE: UPHOLDING A PEOPLE-CENTRIC APPROACH

Employees are the core resource for the sustainable development of the Group. While managing employment in accordance with laws and regulations, we also integrate employee care throughout the entire employment process. We uphold safety production standards in daily operations, providing employees with a safe working environment. Furthermore, we alleviate work pressure, boost morale, and enhance cohesion among employees through fitness facilities, holiday events, themed team-building activities, and outdoor expeditions, while also strengthening their sense of belonging to the Group.

致各利益相關方，

2025年是我國「十四五規劃」的收官之年，也是充滿機遇與挑戰的一年。十四五期間，我國綠色低碳轉型步伐加快，人們對美好生活的需要不斷提升，本集團主營的天然氣調峰電廠在配合國家產業政策及可持續發展戰略的同時，積極推進環境、社會與管治建設。

保護環境，共繪生態畫卷

保護環境，節約資源是我國的基本國策，也是本集團長期以來踐行的環境友好型發展之策。我們持續推進各項環保措施，在下屬電廠層面成立節能工作領導小組、節水工作領導小組，建立節能降耗目標責任制，鼓勵、引導節約資源，並在日常工作中推行綠色辦公，實現環境效益與經濟效益的協同並進。

員工關懷，落實以人為本

員工是本集團可持續發展的核心資源。在依法依規進行僱傭管理的同時，我們也將員工關懷落實到僱傭的全過程，在日常生產經營中築牢安全生產底線，為員工提供安全的工作環境，並通過健身設施、節日活動、主題團建、戶外拓展來減輕工作壓力，提升士氣，增進員工之間的凝聚力，同時也加強對本集團的歸屬感。

MESSAGE FROM THE DIRECTORS (CONTINUED)

董事寄語 (續)

OPERATION RESPONSIBILITY: CREATING EXTRAORDINARY VALUE TOGETHER

As a company primarily engaged in operating natural gas peaking power plants, we are acutely aware of our responsibility to ensure stable power supply during periods of high electricity demand, such as national major events or holidays. To this end, we maintain the upkeep of relay protection and safety automatic devices essential for grid security and stability in our daily operations, along with providing relevant personnel training. This ensures swift and accurate execution of dispatching instructions when needed. Simultaneously, we strengthen ESG management across our supply chain and promote the development of a culture of integrity.

CO-BUILDING THE COMMUNITY

We recognize that the development of an enterprise is inseparable from the support of the community. Therefore, we actively organise employees to participate in various community activities based on the principle of “paying attention to community development, maintaining communication with the community and actively participating in community activities” and in accordance with the needs of the community where it operates. These include charitable donations, material contributions, and volunteer activities. These community efforts not only foster harmonious relationships with local communities but also provide a platform for our employees to care for and serve community needs.

Thank you for your long-standing care and support for the Group. Looking ahead, we hope to join hands with all stakeholders to continue forging ahead courageously on the journey of sustainable development.

GUAN Dayuan

Chairman

Puxing Energy Limited

Zhejiang Province, the PRC, April 2026

營運責任，共創非凡價值

我們牢記作為主營天然氣調峰電廠的企業，確保在國家重大活動或節假日等高電力需求的時期維持供電穩定性的責任。為此，我們於日常經營中做好涉及電網安全穩定運行的繼電保護和安全自動裝置等的維護與人員培訓，確保關鍵時刻迅速、準確執行調度指令，同時亦加強供應鏈ESG管理，推動廉潔文化建設。

社區共建

我們深知，企業的發展離不開社區的支持，因此我們以「關注社區動態，保持與社區溝通，積極參與社區活動」為原則，因應所屬社區需要，積極組織員工參與各項社區活動，包括愛心捐款、物資捐贈、志願者活動等，這些社區既促進了和諧的屬地社區關係建設，也為廣大員工提供了關心關注社區所需、服務社區需求的平台。

感謝大家長期以來對本集團的關心與支持。展望未來，我們希望與各方攜手，繼續在可持續發展征程上勇毅前行。

管大源

董事長

普星能量有限公司

中國浙江省，二零二六年四月

ESG STATEMENT OF THE BOARD

董事會ESG聲明

The Board of the Group hereby makes the following statement in accordance with the requirements of the ESG Code:

Puxing Energy is aware of the significant meaning of sound corporate governance, and has always insisted on adhering to the various requirements of the ESG Code to build an ESG governance structure with the Board and the ESG working group as the core, continuously promote the improvement of its own ESG governance structure and implementation system, and incorporate ESG governance factors into all aspects of the Group's major decision-making and operational practices.

THE BOARD'S ROLE ON ESG GOVERNANCE: The Board of the Group is the highest responsible and decision-making body for the ESG matters, assuming ultimate and full responsibility for ESG matters of the Group. It is responsible for monitoring commitments, performance and achievements in relation to ESG matters with the assistance of the ESG working group and relevant departments, identifying and managing significant ESG risks and opportunities, authorising each Operating Station to implement relevant policies and measures, and convening meetings as and when appropriate to communicate and discuss relevant ESG issues.

本集團董事會按照《ESG守則》要求，做出如下聲明：

普星能量深知良好公司治理的重要意義，始終堅持遵循《ESG守則》的各項要求，搭建以董事會及ESG工作組為核心的ESG管治架構，並不斷推動自身ESG治理架構與執行體系的完善，將ESG治理因素納入本集團重大決策及營運實踐的方方面面。

董事會ESG治理角色：本集團董事會是ESG事宜的最高負責及決策機構，對本集團ESG事宜承擔最終和全部責任，在ESG工作組及各相關部門的協助下負責對與ESG事宜有關的承諾、表現與績效進行監管，負責識別及管理重大ESG風險與機遇，授權各營運點落實相關政策及措施，並適時召開會議就相關ESG議題進行溝通和討論。

ESG STATEMENT OF THE BOARD (CONTINUED)

董事會ESG聲明(續)

THE BOARD'S ESG MANAGEMENT APPROACHES AND STRATEGIES:

The Group attaches great importance to ESG risks that may have a significant impact on the Group. Based on the changes in external environment, policies, industry hotspots, capital market views and the Group's development strategies, the Group updates its ESG issues database by incorporating the identified ESG risks and opportunities, and invites external experts to evaluate the importance of the issues by conducting stakeholder surveys and in-depth assessments, so as to obtain the priority of ESG issues and clarify the focus of the Group's ESG governance efforts.

OBJECTIVES, INDICATORS AND REVIEW

PROGRESS: The Group has established an ESG objective management mechanism, and regularly reviews and reports on the progress of relevant objectives through various forms, such as meetings, ESG report disclosure, etc. The progress and results of the ESG-related efforts of Puxing Energy for the Year have been disclosed in this Report, which has been confirmed and approved by the Board in 27 March 2026.

董事會的ESG管理方針及策略：本集團高度重視ESG風險可能對本集團產生的重大影響，基於外部環境變化、政策影響、行業熱點、資本市場觀點、本集團發展戰略，結合所識別的自身ESG風險與機遇更新ESG議題庫，並邀請外部專家通過開展持份者調研和深度評估的方式對議題開展重要性評估，以獲取ESG議題優先級，明確本集團ESG治理的工作重點。

目標、指針與檢討進度：本集團已建立了ESG目標管理機制，並通過會議、ESG報告披露等諸多形式定期檢討與匯報相關目標的進展情況。普星能量本年度與ESG有關工作的進展與成效皆已披露於本報告中，且本報告已於二零二六年三月二十七日經董事會確認和批准。

CORPORATE GOVERNANCE⁴

企業管治⁴

The Group has always regarded a good governance mechanism as an important foundation for an enterprise to enhance its own value, safeguard shareholders' interests and achieve sustainable development. In our long-standing corporate governance practices, we are committed to improving the governance system and optimising management standards, and have adopted and applied the code provisions and, where appropriate, recommended best practices set out in the "Corporate Governance Code" in Appendix C1 to the Listing Rules, in an attempt to continuously consolidate the construction of internal control system to enhance the Group's risk control management capabilities.

The Board of the Group is responsible for leading and overseeing the overall management of the businesses, including the establishment and monitoring of the Group's strategic development, business plans, financial objectives and capital investment proposals, and is also responsible for the corporate governance of the Group. The authority and responsibility for executing the business strategies and managing the day-to-day business operations of the Group are delegated by the Board to the executive Directors and the management of the Group (the "Management"), who are responsible for the day-to-day operations, management and administration of the Group under the leadership of the executive Directors, as well as the execution and implementation of the strategies and approaches determined by the Board with clear and efficient authority and responsibility.

本集團一直將良好的治理機制視為企業提升自身價值、維護股東權益，實現可持續發展的重要基礎。在長期的公司治理實踐中，我們致力於完善治理制度，優化管理水平，並已採納及應用《上市規則》附錄C1《企業管治守則》所載的守則條文及（若適合）建議最佳常規，不斷鞏固內控體系建設以加強本集團的風險控制管理能力。

本集團董事會負責領導以及監督業務的整體管理，包括設立及監察本集團的策略發展、業務計劃、財務目標與資本投資建議，亦須負責本集團的企業管治；執行業務策略及管理本集團日常業務營運的權力與責任則由董事會授予執行董事及本集團管理層（簡稱「管理層」），管理層在執行董事的領導下負責本集團的日常營運、管理及行政，亦執行及實施董事會釐定的戰略及方針，權責明確、富有效率。

⁴ For details of the specific corporate governance information, please refer to the "Corporate Governance Report" set out in Puxing Energy's 2025 Annual Report.

⁴ 具體企業管治信息詳見普星能量二零二五年度報告內的《企業管治報告》。

ESG GOVERNANCE

ESG管治

ESG GOVERNANCE STRUCTURE

With respect to the sustainable development, the Group has now established an ESG governance system with the Board and the ESG working group as the core.

Decision-making level: the Board **決策層：董事會**

The highest responsible and decision-making body for the ESG matters, assuming full responsibility for the Group's ESG strategies and reporting. 是ESG事宜的最高負責及決策機構，對本集團的ESG策略及匯報承擔全部責任。

- approving and monitoring the policies and mechanisms for managing ESG-related issues and ensuring the adequacy of resources;
- 批准和監督管理ESG相關問題的政策和機制，並確保資源充足；
- reviewing and approving the Group's ESG vision, objectives, strategies, management policies and work plans;
- 審閱及批准本集團的ESG願景、目標、策略、管理政策及工作計劃；
- overseeing the work of the ESG working group;
- 監督ESG工作組的工作；
- adopting and updating the Group's ESG policies as necessary based on the recommendations of the ESG working group;
- 根據ESG工作組的建議，在必要時採用和更新本集團的ESG政策；
- supervising the corresponding implementation, planning and effectiveness of the Group's ESG goals;
- 監督本集團ESG目標的相應實施、規劃和有效性；
- reviewing and approving the ESG reports prepared by the ESG working group; and
- 審閱及批准由ESG工作組準備的ESG報告；及
- reviewing and approving the Group's ESG budget proposed by the ESG working group.
- 審閱及批准由ESG工作組提出的本集團的ESG預算。

ESG管治架構

在可持續發展方面，本集團現已建立了以董事會及ESG工作組為核心的ESG管治體系。

ESG GOVERNANCE (CONTINUED)

ESG管治 (續)

Execution level: ESG working group 執行層：ESG工作組

A team comprised of the Management under the leadership of the executive Directors, is responsible for implementing the ESG policies and mechanisms set by the Board and for preparing works for the Board's decision-making. The ESG working group reports to the Board by provision of written information regarding the Group, and shall report to the Board at least semi-annually on its work concerning the Group's ESG matters.

是一個由管理層組成並由執行董事領導的團隊，負責執行董事會制定的ESG政策和機制，以及董事會決策的準備工作，並通過提供有關本集團的書面數據向董事會進行匯報，且ESG工作組應至少每半年向董事會報告其對本集團ESG事宜所做的工作。

- formulating and reviewing the Group's ESG vision, objectives, strategies and management policies for the Board's approval;
- 制定及檢討本集團的ESG願景、目標、策略及管理政策，供董事會審批；
- formulating and implementing ESG work plans in accordance with the Group's ESG management policies, strategies and objectives approved by the Board;
- 根據董事會批准的本集團ESG管理政策、策略及目標，制定及實施ESG工作計劃；
- reviewing and supervising the Group's management structure, policies and operational management in relation to ESG and making recommendations to the Board on relevant ESG work to ensure continuous compliance with legal and regulatory requirements;
- 檢討及監督本集團ESG的管理架構、政策及營運管理，並就相關ESG工作向董事會提出建議，以確保持續符合法律及監管要求；
- reviewing the key trends of ESG, identifying the risks and opportunities associated with ESG and assessing the adequacy and effectiveness of the Group's ESG-related structure accordingly;
- 檢討ESG的主要趨勢，識別與ESG相關的風險和機遇，並相應評估本集團ESG的相關結構是否充分有效；
- providing the Board with recommendations to update the Group's ESG policies as necessary and ensuring such policies are up-to-date and comply with applicable laws, regulations and regulatory requirements;
- 在必要時向董事會提供更新本集團ESG政策的建議，並確保該等政策與時俱進並遵守適用的法律、法規和監管要求；
- monitoring communication with the Group's stakeholders and identifying ESG-related matters that have significant impact on the Group's operations and/or the interests of other key stakeholders;
- 監察與本集團持份者的溝通，並識別對本集團營運及／或其他關鍵持份者的利益有重大影響的ESG相關事項；
- regularly reviewing the progress towards achieving ESG goals and making recommendations to the Board on the actions required to improve performance;
- 定期審查實現ESG目標的進展，並就改善績效所需的行動向董事會提出建議；

ESG GOVERNANCE (CONTINUED)

ESG管治 (續)

- identifying the ESG-related matters caused by external factors, evaluating the impact of the ESG work on the Group both internally and externally, listening to the feedback on the ESG work from outside and within the Group, and making recommendations to the Board on the next steps for improvement of the ESG work;
- 識別外部因素導致的ESG相關事項，評估ESG工作對本集團內部和外部的影響，聽取本集團外部和內部對ESG工作的反饋，並向董事會提出下一步ESG工作的改進建議；
- ensuring that the Group prepares and discloses the ESG report in accordance with the requirements of the Listing Rules and making recommendations to the Board on any specific actions or decisions required to be taken to maintain the integrity of the ESG report;
- 確保本集團不時按照《上市規則》的規定編製及披露ESG報告，並就為保持ESG報告的完整性而需要採取的任何具體行動或決定向董事會提出建議；
- monitoring staff training on ESG matters;
- 監督有關ESG事宜的員工培訓；
- monitoring the budget and expenditure of the Group's ESG work;
- 監察本集團ESG工作的預算及開支；
- reporting to the Board on any update regarding the ESG matters as necessary;
- 必要時向董事會報告ESG事宜的任何新進展；
- reporting the findings on the ESG matters and making recommendations to the Board as necessary; and
- 必要時向董事會報告ESG事宜的調查結果並提出建議；及
- other ESG-related matters as authorised by the Board.
- 董事會授權的其他與ESG相關的事項。

In order to accept supervision from the public and investors, and strengthen the understanding and identification of stakeholders with the Company, so that stakeholders can timely and accurately obtain information, we use official websites and other platforms to increase channels for information disclosure and communication, enrich the forms of information dissemination, and improve communication effectiveness.

為接受來自社會公眾和投資者的監督，同時加強利益相關方對公司的了解和認同，讓利益相關方能及時準確地獲取信息，我們利用官方網站等平台，增加信息披露與溝通的渠道，豐富信息傳播的形式，提升溝通效果。

ESG GOVERNANCE (CONTINUED)

ESG管治 (續)

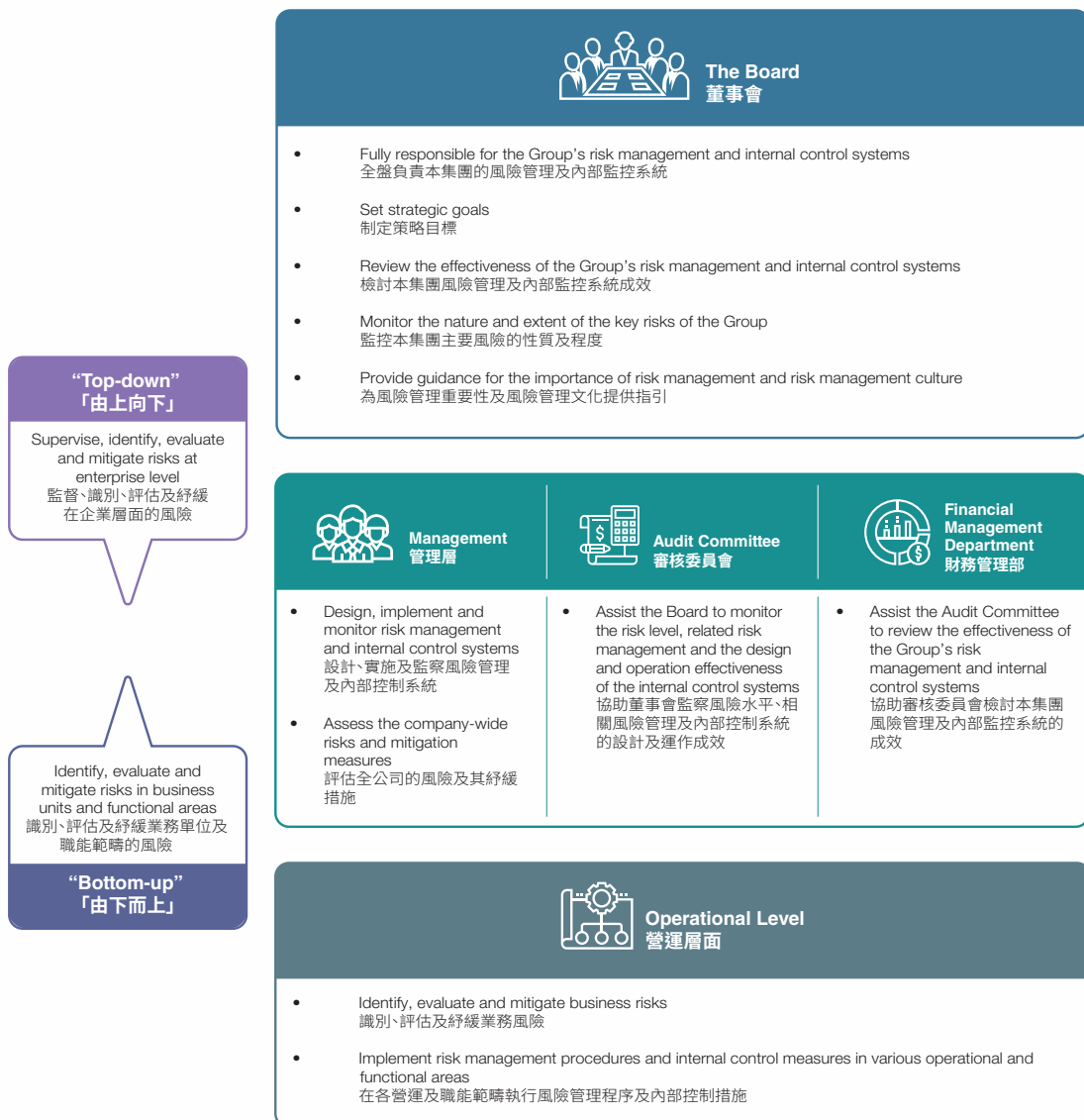
ESG RISKS IDENTIFICATION AND MANAGEMENT

In order to further identify possible risks and ensure effective implementation of measures, the Group establishes a dedicated risk management structure and conducts risk identification and assessment on a regular basis.

ESG風險識別與管理

為進一步識別可能的風險並保障措施的有效實施，本集團搭建專門的風險管理架構，並定期開展風險識別與評估工作。

Risk Management Framework of the Group 本集團風險管理架構圖



ESG GOVERNANCE (CONTINUED)

ESG管治 (續)

During the Year, in addition to the risks and uncertainties involved in the business operations of the Group as disclosed in the section headed “Principal Risks and Uncertainties” in the “Directors’ Report” of the Group’s 2025 Annual Report, the Group has also identified the following ESG-related risks, focused on them, and developed response and control measures:

本年度，除已於本集團二零二五年年度報告《董事會報告》中「主要風險及不確定因素」一節內所披露有關本集團業務營運所涉及的風險及不確定因素外，本集團亦已識別下列與ESG相關的風險，重點關注，並制定應對及控制措施：

ESG Risks ESG風險	Potential Impact 潛在影響	Risk Response and Control Measures 風險應對及控制措施
Emissions 排放物	<ul style="list-style-type: none"> Failure to discharge waste gas, wastewater and solid waste in accordance with the national requirements may cause pollution to the water and atmosphere and health hazards to the human body. This will expose the Group to fines and suspension of operations, which will affect the reputation of the Group. 廢氣、廢水、固體廢棄物如未能按照國家要求排放，可能導致對水體和大氣造成污染，並對人體產生健康危害。這將使本集團面臨罰款及暫停營運，影響本集團聲譽。 	<ul style="list-style-type: none"> The Group engages dedicated environmental protection technicians to regularly upgrade the equipment in accordance with the industry’s latest environmental requirements, and monitor the operation a adjustments to ensure that the emissions from the production using the equipment meet the standards and reduce the risk of non-compliance. 本集團聘用專責環保技術人員，按照行業最新環保要求，定期為設備進行升級改造，並對運行調整進行監察，確保設備生產時排放達標，減低違規風險。

ESG GOVERNANCE (CONTINUED)

ESG管治 (續)

ESG Risks ESG風險	Potential Impact 潛在影響	Risk Response and Control Measures 風險應對及控制措施
Use of resources 資源使用	<ul style="list-style-type: none"> Any waste of resources will increase Group's economic costs. At the same time, disruptions in the supply of natural gas or water may also result in the shutdown of the units and the loss of operating income. 浪費資源將增加本集團經濟成本。同時，天然氣或用水供應中斷，亦會導致機組停運，對營運收入造成損失。 	<ul style="list-style-type: none"> The Group strengthens the publicity and education of employees on energy conservation and emission reduction, and conducts equipment upgrade and technical analysis to improve energy efficiency and reduce fuel consumption. 本集團加強員工節能減排的宣傳教育，並進行設備升級及技術分析提高能源效益，減少燃料消耗。 The Group is committed to ensuring stable gas and water supply, and has formulated emergency plans as well as conducted regular drills to mitigate the impact of incidents on day-to-day operations. 本集團致力確保供氣供水穩定，並制定應急預案及定期進行演練，減輕事故發生對日常營運的影響。

ESG GOVERNANCE (CONTINUED)

ESG管治 (續)

ESG Risks ESG風險	Potential Impact 潛在影響	Risk Response and Control Measures 風險應對及控制措施
<p>Health and safety 健康與安全</p>	<ul style="list-style-type: none"> The health and safety of employees is an important part of the Group's business operations. Any casualties resulting from the occurrence of work safety accidents during the course of the Group's operations will affect the normal operations of the Group and expose the Group to economic loss. Under the strict production safety requirements, the Group may be also exposed to relevant legal risks and liabilities. 員工的健康與安全是本集團業務營運重要部分。倘若本集團在營運期間發生安全生產事故而導致人員傷亡，將影響本集團正常營運，令本集團蒙受經濟損失。面對嚴格的安全生產要求，本集團亦須承擔相關法律風險及責任。 	<ul style="list-style-type: none"> The Group is committed to incorporating safety management into the production sites at all operational levels of "human, equipment, materials, laws, and environment". Each Operating Station has established a "Production Safety Committee", and manages the occupational health and safety risks identified. The Group also regularly organises safety and health trainings for employees and supervises the strict implementation of the Group's rules and regulations by its employees, as well as conducts regular safety inspections and strengthens the health management of employees to reduce the risks caused by related safety accidents. 本集團致力將生產現場的安全管理加入「人、機、料、法、環」各個營運層面。各營運點已設立「安全生產委員會」，並管理所識別的職業健康與安全風險。本集團亦定期為員工舉辦安全及健康培訓，並監督員工嚴格執行集團規章制度及規程，定期進行安全巡查，以及加強員工健康管理，減少相關安全事故帶來的風險。

ESG GOVERNANCE (CONTINUED)

ESG管治 (續)

ESG Risks
ESG風險

Potential Impact
潛在影響

Risk Response and Control
Measures
風險應對及控制措施

- The Group formulates emergency plans and organises regular drills and corresponding safety training for its employees to enhance their safety awareness and reduce the possible safety risks caused by unexpected events.
- 本集團制定應急預案，並定期組織員工進行演練及相應安全培訓，以提高員工安全意識，減低突發事件可能造成的安全風險。
- In respect of occupational disease protection, the Group attaches great importance to comprehensive occupational health and safety management, including occupational disease protection facilities, protective equipment management, promotion, education and training on prevention and control of occupational disease hazards, occupational health monitoring and occupational disease management, etc. The Group is committed to continuously improving working conditions and striving to create a safe, healthy and comfortable working environment for its employees.
- 在職業病防護方面，本集團重視職業病防護設施、防護用品管理、職業病危害防治宣傳教育培訓、職業健康監護與職業病管理等在全方面的職業健康安全管理內容，致力於持續改善工作條件，努力為職工打造一個安全、健康、舒適的工作環境。

ESG GOVERNANCE (CONTINUED)

ESG管治 (續)

ESG Risks ESG風險	Potential Impact 潛在影響	Risk Response and Control Measures 風險應對及控制措施
<p>Product responsibility 產品責任</p>	<ul style="list-style-type: none"> The Group is required to maintain its electricity quality and production level in accordance with “The Implementation Details of the Grid Connection and Operation Management in Eastern China” and “The Implementation Details of the Auxiliary Service Management of Grid-connected Power Plants in Eastern China” (the “Two Rules”) and the requirements of the power grid at all times to ensure that the quality of electricity meets the requirements of users. Failure to operate in accordance with the requirements of the power grid may result in grid incidents and subject the Group to fines. In addition, failure to meet the requirements of external heating users will result in the Group’s financial compensation to those users who suffered economic losses. 本集團需時刻按照《華東區域發電廠並網運行管理實施細則》及《華東區域並網發電廠輔助服務管理實施細則》(簡稱「兩個細則」)及電網要求維持電力的質量及生產水平，以確保電力質量符合用戶要求。如沒有按照電網要求進行營運，可能造成電網事故，並面臨罰款。同時，如對外供熱未能滿足用戶要求，將導致本集團需向經濟受損的用戶作出經濟賠償。 	<ul style="list-style-type: none"> The Group has adopted the highest safety standards in the industry for its production, including strict implementation of the requirements of the Two Rules, strict control of the operating parameters of power generating units, equipping and updating power system automation equipment with regular maintenance, strengthening system security protection, enhancing personnel training and management, repairing system vulnerabilities, upgrading security systems, and enhancing the maintenance of heating related equipment, etc. 本集團採納行業最高的安全標準進行生產，包括嚴格執行兩個細則規範要求；嚴格控制發電機組運行參數；配備更新電力系統自動化設備，定期維護保養；加強系統安全防護，加強人員培訓管理，修補系統漏洞，升級安防系統，加強供熱相關設備維護等。

ESG GOVERNANCE (CONTINUED)

ESG管治 (續)

ESG Risks
ESG風險

Potential Impact
潛在影響

Risk Response and Control
Measures
風險應對及控制措施

- In order to ensure the stability of electricity supply during periods of high electricity demand such as major national events or holidays, the Group has formulated a special power conservation plan to implement a series of measures and emergency plans to ensure the safety of electricity supply, and actively reported to the electricity regulatory bodies and the electricity dispatch and trading authority on the preparation of various tasks before entering the power conservation stage to ensure the stability of electricity supply during periods of high electricity demand.
- 為確保在國家重大活動或節假日等高電力需求的時期維持供電穩定性，本集團制定專項保電方案，落實一系列保障電力安全措施及應急方案，並在進入保電階段前積極向電力監管機構及電力調度交易機構報告各項工作準備情況，以確保在高電力需求時維持供電穩定。

ESG GOVERNANCE (CONTINUED)

ESG管治 (續)

ESG Risks ESG風險	Potential Impact 潛在影響	Risk Response and Control Measures 風險應對及控制措施
		<ul style="list-style-type: none">• In order to prevent accidents such as forced shutdown of units due to natural gas leakage during the gas supply, the Group has authorised the Production Safety Committee to implement relevant safety measures for production activities, appointed natural gas suppliers to conduct regular inspection and maintenance of gas supply pipelines, and arranged emergency response training for employees to enhance their ability and awareness of emergency responses.• 為防止在供氣過程中因發生天然氣洩漏所可能導致的機組被迫停運等事故，本集團授權安全生產委員會執行與此有關安全生產工作，並委託天然氣供應商對供氣管道定期進行檢查及維修，並為員工安排應急培訓，加強員工應變能力及意識。

ESG GOVERNANCE (CONTINUED)

ESG管治 (續)

ESG Risks ESG風險	Potential Impact 潛在影響	Risk Response and Control Measures 風險應對及控制措施
Employment and training 僱傭與培訓	<ul style="list-style-type: none"> The Group's failure to comply with national requirements in the employment process may result in fines and reputational damage to the Group. 本集團在員工僱傭過程中若未能按照國家要求進行，可能會導致本集團面臨罰款及聲譽損失。 Any dishonest behaviours and negligence of the employees will expose the Group to litigation risk and legal liability. 員工失信行為及過失將導致本集團面臨訴訟風險及法律責任。 The Group's failure to conduct employee training in accordance with the employee training management rules to enhance their skills may lead to the risks arising from poor skills of employees and related misoperation. 本集團若在員工培訓中沒有按照員工培訓管理辦法開展培訓以提升員工技能，可能會導致員工技能水平不高以及相關誤操作發生的風險。 	<ul style="list-style-type: none"> The Group manages all human resources matters in accordance with the "Labour Law of the People's Republic of China" and "Human Resources Management Policy" to ensure compliance with employment regulations. 本集團依照《中華人民共和國勞動法》及《人力資源管理制度》管理各項人力資源事宜，確保符合用人規範。

ESG GOVERNANCE (CONTINUED)

ESG管治 (續)

ESG Risks ESG風險	Potential Impact 潛在影響	Risk Response and Control Measures 風險應對及控制措施
<p>Anti-corruption 反貪污</p>	<ul style="list-style-type: none"> • Possible corruption and fraud in the process of project tendering and bidding, material procurement and all other business activities will expose the Group to legal and financial risks. • 工程招投標、物資採購過程及其他所有業務活動中可能出現的貪污及舞弊的行為，將導致本集團面臨法律及財務風險。 	<ul style="list-style-type: none"> • The Group attaches great importance to the implementation of anti-corruption efforts, and formulates an “Anti-corruption Policy”, which incorporates the forms of bribery and corruption, gifts and hospitality, whistle blowing, investigation, protection and confidentiality and anti-corruption training into the system. Such system has been published on the Company’s website. • 本集團高度重視反腐敗工作的落實，制定了《反貪污政策》，將賄賂和貪污的形式、禮品和款待、舉報、調查、保障及保密、反貪培訓均納入制度中進行明確，該制度現已發佈在本公司網站。 • For employees, the Group governs the management processes through agreements, the creation of corporate integrity culture, and integrity education to prevent system vulnerabilities, strengthen the integrity of employees and provide them with case studies with the aim of enhancing their anti-corruption awareness. • 對員工，本集團以協議約定、廉潔文化氛圍創建、廉潔教育等方式規範管理流程，防範制度漏洞，加強員工廉政建設，為員工提供案例學習，加強他們的反貪意識。

ESG GOVERNANCE (CONTINUED)

ESG管治 (續)

ESG Risks
ESG風險

Potential Impact
潛在影響

Risk Response and Control
Measures
風險應對及控制措施

- The Group strictly implements the management rules on tendering and bidding at each Operating Station, and practices the principles of “fairness, openness and impartiality” in the process of project tendering and bidding and material procurement to maintain transparency and ensure compliance with regulatory requirements. The Group also requires suppliers to comply with the Group’s integrity and compliance requirements by signing the “Integrity Construction Guarantee” during the process of tendering.
- 本集團嚴格執行各營運點的招投標管理規定，在招投標、物資採購工作實踐「公平、公開、公正」的原則，維持透明度並確保符合法規要求，並會在招標時以簽署《廉政建設保證書》的形式要求供應商遵守本集團的廉潔合規要求。

ESG GOVERNANCE (CONTINUED)

ESG管治 (續)

COMMUNICATION WITH STAKEHOLDERS

Stakeholders⁵ represent the stakeholder groups that are most affected by corporate operations and have the most influence on corporate development. The Group maintains active, transparent and stable communication with stakeholders and receives feedback from them in a timely manner to continuously improve its understanding of stakeholders' expectations and aspirations, and to continuously improve the Group's sustainable development performance and operational strategies and measures.

持份者溝通

持份者⁵代表了受企業營運影響最多且最能影響企業發展的利益相關方群體，本集團與持份者保持積極、透明、穩定的溝通以及時獲取持份者回饋，不斷加深對持份者期望與要求的理解，並持續改善本集團的可持續發展績效表現和經營策略與措施。

List of Stakeholders Communication and Issues of Concern of Puxing Energy

普星能量持份者溝通及議題關注列表

Stakeholder Group 持份者組別	Issues of Concern 關注點	Communication Channels 溝通模式
Employees 員工	<ul style="list-style-type: none"> • Employment system • 僱傭制度 • Employee rights and benefits • 員工權益與福利 • Occupational health and safety • 職業健康與安全 • Development and training • 發展及培訓 • Diversity and equal opportunity • 多元化與機會平等 	<ul style="list-style-type: none"> • Employee opinion survey • 員工意見調查 • Intranet communication bulletin • 內部網絡通訊公告 • Company activities • 公司活動 • Regular meetings and emails • 定期會議及電郵 • Internal trainings • 內部培訓
Shareholders/ Investors 股東／投資者	<ul style="list-style-type: none"> • Profitability of the Group • 本集團盈利 • Risk and crisis management • 風險及危機處理 • Green energy opportunities • 綠色能源機遇 • Anti-corruption • 反貪污 	<ul style="list-style-type: none"> • Annual general meeting • 股東周年大會 • Company website and emails • 公司網站及電郵 • Announcements, circulars, annual reports and interim reports • 公告、通函、年度報告及中期報告

⁵ "Stakeholder(s)", also known as "interested party(ies)" or "equity holder(s)", refer(s) to any group or individual significantly influencing or affected by the business of the Group, including the Board, the Management and general staff at the internal level, as well as the shareholders/investors, business partners, customers, government and regulatory bodies, banks and community groups at the external level.

⁵ 「持份者」，又稱「利益相關方」或「權益人」，指對本集團業務有重大影響，或會受本集團業務影響的群體和個人，當中包括內部的董事會、管理層、一般員工，以及外部的股東／投資者、業務夥伴、客戶、政府及監管機構、銀行及社區團體等。

ESG GOVERNANCE (CONTINUED)

ESG管治 (續)

Stakeholder Group 持份者組別	Issues of Concern 關注點	Communication Channels 溝通模式
Customers 客戶	<ul style="list-style-type: none"> Product safety 產品安全 Power supply stability 供電穩定性 Customer service 客戶服務 	<ul style="list-style-type: none"> Regular visits 定期走訪 Phone calls 電話聯絡 Technical support 技術支持
Regulatory bodies 監管機構	<ul style="list-style-type: none"> Power supply stability 供電穩定性 Anti-corruption 反貪污 Green energy opportunities 綠色能源機會 Greenhouse gas emissions 溫室氣體排放 Climate change 氣候變化 	<ul style="list-style-type: none"> Government and industry conferences 政府與行業會議
Suppliers 供應商	<ul style="list-style-type: none"> Supply chain management 供應鏈管理 	<ul style="list-style-type: none"> Regular on-site visits 定期實地考察 Supplier meetings 供應商會議 Review and evaluation 審核及評估
Community 社區	<ul style="list-style-type: none"> Community investment 社區投資 	<ul style="list-style-type: none"> Community investment 社區投資項目 Volunteer charity activities 義工公益活動

ESG GOVERNANCE (CONTINUED)

ESG管治 (續)

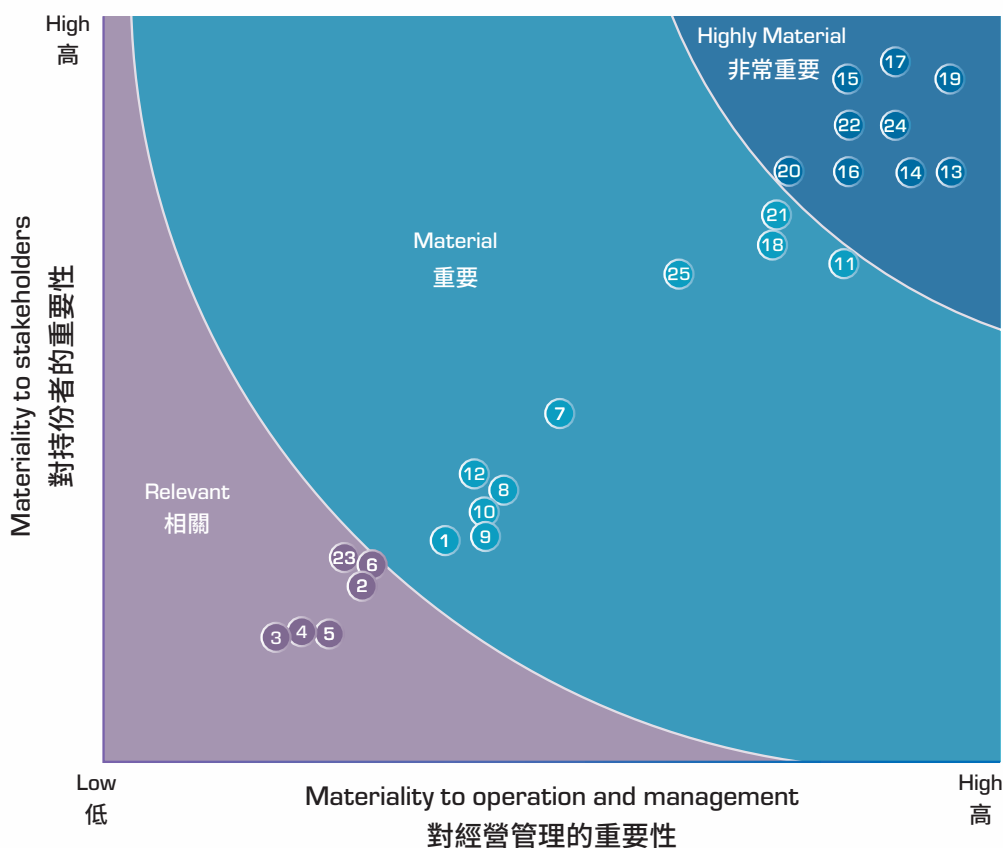
MATERIALITY ASSESSMENT

After taking into account the development direction, industry features, feedback from various stakeholders and external expert opinions, the Group built a database of ESG issues, and sincerely invited internal stakeholders, including members of the governing body and employees of various departments to rate 25 ESG issues on two aspects concerning “materiality to stakeholders” and “materiality to operation and management” through an online questionnaire. Based on the results of the questionnaire together with the Group’s operational practices and aspects of the issues, the Group identified nine very important issues and the materiality matrix (as shown in the chart below) as focused subject areas of this Report and the basis for future strategy development.

重要性評估

本集團結合自身發展方向、行業特性、各利益相關方回饋及外部專家意見構建ESG議題庫，並通過在線問卷調研誠邀包含管治機構成員與各部門員工在內的內部利益相關方站在「對利益相關方的重要性」和「對經營管理的重要性」兩個維度對25項ESG議題進行打分。根據問卷調查評估結果結合本集團營運實踐及議題覆蓋維度，釐定九項非常重要議題及重要性矩陣(如下圖所示)，並於本報告進行重點匯報以及作為日後制定策略的基礎。

Materiality Issues Matrix for Puxing Energy’s ESG
普星能量ESG重要性議題矩陣



ESG GOVERNANCE (CONTINUED)

ESG管治 (續)

Highly Material 非常重要	Material 重要	Relevant 相關
13 Employment and labour management 僱傭與勞工管理	01 Greenhouse gas emissions 溫室氣體排放	02 Air emissions 廢氣排放
14 Employee rights and benefits 員工權益與福利	07 Direct energy 直接能源	03 Generation of hazardous waste 有害廢棄物產生
15 Occupational health and safety 職業健康與安全	08 Water resources 水資源	04 Generation of non-hazardous waste 無害廢棄物產生
16 Development and training 發展及培訓	09 Potential impacts of the environment and natural resources on the Company 環境和自然資源對公司的潛在影響	05 Wastewater discharge 廢水排放
17 Employee rights and labour standards 員工權利與勞工準則	10 Climate change 氣候變化	06 Indirect energy 間接能源
19 Product safety 產品安全	11 Risk and crisis management 風險及危機處理	23 Innovation management 創新管理
20 Power supply stability 供電穩定性	12 Diversity and equal opportunity 多元化與機會平等	
22 Green energy opportunities 綠色能源機遇	18 Supply chain management 供應鏈管理	
24 Anti-corruption 反貪腐	21 Customer service 客戶服務	
	25 Community investment 社區投資	

In the future, the Group will continue to strengthen its communication with stakeholders and collect their opinions on sustainability issues through various regular and irregular communication activities, such as stakeholder questionnaires and focus group sessions, to improve and update the Group's sustainability policies and initiatives in a timely manner.

未來，本集團將繼續加強與持份者溝通，並透過不同定期與不定期溝通活動（如：持份者問卷調查及焦點小組），收集他們對可持續發展事宜的意見，以完善及適時更新本集團的可持續發展政策及措施。

ENVIRONMENTAL PROTECTION

環境保護

It is the responsibility of every corporate citizen to protect the ecological environment. The Group fully recognises that natural gas power generation may have varying impacts on the environment, and is therefore always committed to practicing environmental protection in a responsible manner. According to the “Environmental Protection Law of the People’s Republic of China”, “Energy Conservation Law of the People’s Republic of China”, “Atmospheric Pollution Prevention and Control Law of the People’s Republic of China”, “Law of the People’s Republic of China on the Prevention and Control of Environmental Pollution by Solid Wastes”, “Water Pollution Prevention and Control Law of the People’s Republic of China”, and other laws and regulations, each Operating Station has established various systems and policies on resource management and emission management, including “Environmental Protection Management Standards”, “Management System on Energy Conservation”, “Management Rules on Greenhouse Gas Emissions”, etc., according to its own needs, in an effort to reduce negative impacts on the natural environment. During the reporting period, the Group did not have any major violations of laws and regulations regarding the environment.

ENVIRONMENT AND NATURAL RESOURCES

The Group’s power generating units are fueled by natural gas to generate power, which is supplied to the Group by natural gas suppliers using pipelines that meet safety standards. However, a stable gas supply from pipelines is critical to the business operations. In case of a natural gas leak occurred during the gas supply, in addition to the possible forced shutdown of the units and other incidents, there may be dangers against and impacts on the surrounding areas and communities, including fires, explosions and toxic fumes, which may lead to environmental pollution and casualties.

保護生態環境是每個企業公民應盡的責任，本集團深知天然氣發電過程對環境可能造成的不同影響，始終致力以負責任的態度實踐環境保護。各營運點依據《中華人民共和國環境保護法》《中華人民共和國節約能源法》《中華人民共和國大氣污染防治法》《中華人民共和國固體廢物污染環境防治法》及《中華人民共和國水污染防治法》等法律法規，根據自身需要，訂立各種有關資源管理及排放物管理的制度及政策，包括：《環境保護管理標準》《節能管理制度》及《溫室氣體排放管理規定》等，以努力減少對自然環境的負面影響。報告期內，本集團在環境方面未發生重大違法違規事件。

環境及天然資源

本集團的發電機組以天然氣作為燃料進行發電，而天然氣則由天然氣供應商透過符合安全標準的管道向本集團供氣。然而，維持管道供氣穩定對業務營運至關重要。若在供氣過程中發生天然氣洩漏事故，除有可能造成機組被迫停運等事故外，亦有可能造成如火災、爆炸、產生有毒煙霧等污染環境及造成人員傷亡的危害，對周邊環境及社區產生危險及影響。

ENVIRONMENTAL PROTECTION (CONTINUED) 環境保護 (續)

To this end, the Group has authorised the Production Safety Committee to implement relevant safety measures for production activities, and appointed natural gas suppliers to conduct regular inspection and maintenance for gas supply pipelines, address pipeline issues in a timely manner, carry out regular comprehensive leak detection of the natural gas system, and inspect the natural gas pipelines every shift so as to ensure that the process of gas supply complies with safety standards. Each Operation Station has also formulated an “Emergency Plans for Natural Gas Leak from Equipment” or “Emergency Plans for Environmental Pollution Incidents”, and has established a leading emergency management system with clear authority and responsibilities. The leading emergency group and the emergency office oversee and coordinate the emergency management of natural gas leakage incidents. The general manager serves as the head of the leading emergency group, and the members include the manager of the production technology department, office manager, manager of the finance department, supervisor of material resources, dedicated staff of safety supervision, chief shift officer, shift supervisor and other employees. In addition, whenever required, each Operation Station regularly provides emergency trainings to its employees to enhance their ability and awareness of emergency responses so as to reduce casualties and losses in the event of an incident.

為此，本集團授權轄下的安全生產委員會執行有關安全生產工作，並委託天然氣供應商對供氣管道定期進行檢查及維修，對管道問題及時進行處理，同時定期對天然氣系統進行全面檢漏，每班對天然氣管道進行巡檢，確保供氣過程符合安全標準。各營運點亦已制定《天然氣管道設備洩漏事故應急預案》或《突發環境污染事件應急預案》，並建立了權責分明的應急領導管理體系，由應急領導小組及應急辦公室監督及統籌應對天然氣洩漏事故的應急管理工作，由總經理擔任應急領導小組組長，成員為生產技術部經理、辦公室主任、財務部經理、物資主管、安全監察專職、總值長、當班值長等員工。此外，各營運點按需要定期為員工提供應急培訓，加強員工應變能力及意識，在發生事故時減輕傷亡事故及損失。

ENVIRONMENTAL PROTECTION (CONTINUED)

環境保護 (續)

With respect to chemical management, the Group attaches great importance to the management of chemical safety and the promotion of chemical hazard information in compliance with the “Regulations on the Safe Administration of Dangerous Chemicals” and “Interim Provisions on the Supervision and Management of Major Hazard Sources of Dangerous Chemicals”. The Group has formulated systems including “Safety Management System of Hazardous Chemicals”, “Level Management of Precursor Chemicals” or “Management Standard of Toxic Drugs” based on the needs of each Operating Station, organised the establishment of a leading taskforce for the safety management of precursor chemicals, arranged designated personnel, warehouse personnel and supply and sales staff to acquire the knowledge of relevant laws, regulations, rules, safety knowledge, protection and emergency rescue, as well as regularly inspected the use, storage, deposit in and withdrawal from warehouse, flow of goods and anti-theft facilities of precursor chemicals. For possible chemical leaks, we have formulated an emergency plan such as the “Plan for Hazardous Chemicals Leak Incident”, established an emergency rescue taskforce, clarified the division of authority and responsibility, specified the rules for on-site emergency procedures, measures and incident reporting, as well as conducted emergency drills and training covering chemical leak drills, with the aim of avoiding or minimising the loss caused by hazardous chemicals leak incident.

In addition, certain of the Group's power plants, such as Deneng Power Plant, extract water from nearby rivers for production purposes. In order to minimise the ecological impact on the rivers when power plants pump water, the Group also carries out dredging and landscaping procedures at the river intake regularly.

在化學品管理方面，本集團重視對化學品安全的管理和化學品危害信息的傳遞，並遵循《危險化學品安全管理條例》及《危險化學品重大危險源監督管理暫行規定》，根據各營運點自身需要制定了如《危險化學品安全管理制度》《易制毒化學品等級管理》或《有毒藥品管理標準》等制度，組織建立了易制毒化學品安全管理領導小組，組織專管員、倉儲員、供銷員接受有關法律、法規、規章和安全知識、防護應急救援知識的學習，並定期檢查易制毒化學品使用、儲存、進庫、出庫、流向、防盜設施等情況。針對可能出現的化學品洩漏情況，我們制定了《化學危險品洩漏事故處置方案》等應急處置方案，成立應急救援指揮部，對權責劃分、現場應急處置程序、現場應急處置措施、事件報告均進行了明確規定，並結合化學品洩漏演練等應急演練與培訓，避免或最大程度地減輕化學危險品洩漏事故造成的損失。

此外，本集團部分電廠如德能電廠於鄰近的河流抽取用水作生產用途。為減低電廠抽水時對河流生態影響，本集團亦會定期對河流取水口進行清淤及綠化工作。

ENVIRONMENTAL PROTECTION (CONTINUED)

環境保護 (續)

USE OF RESOURCES

The Group is committed to improving the efficiency of energy and resource utilisation, and has formulated a number of environmental protection and energy and water conservation policies at each Operation Site, including the “Environmental Protection Management Standards”, “Management System on Water Conservation”, “Environmental Protection Target Responsibility Assessment and Management Standard”, etc. based on system control, measures implementation and performance assessment with effective means of lean management so as to achieve an effective cycle of cost reduction and efficiency enhancement.

Energy Consumption

The energy consumption types of the Group are mainly natural gas, gasoline and electricity, etc. In order to ensure that the operation process of each Operating Station is in line with energy efficiency, the Group is responsible for supervising, inspecting, adjusting and evaluating the energy consumption of each Operating Station. Meanwhile, in order to strengthen the supervision on energy conservation, reduce the overall energy consumption of the Group and continuously improve the efficiency of comprehensive utilisation of resources, we have set corresponding energy efficiency targets and formulated the “Management System on Energy Conservation”, as well as established and authorised the leading group for energy conservation to perform daily energy conservation tasks, such as being responsible for leading daily energy conservation management, supervising the energy conservation group, collecting and reporting relevant information, conducting statistical analysis of normal operation energy consumption data, identifying energy utilisation anomalies, finding causes, formulating corrective measures and reporting them in a timely manner, guiding and educating employees to enhance their awareness of energy conservation.

資源使用

本集團致力於提升能源和資源使用效率，各營運點均已制定多項環保節能節水政策，包括《環境保護管理標準》《節水管理制度》及《環保目標責任制考核管理標準》等，並以制度控制、措施落實、績效考核為基礎，以精益管理為有效手段，以實現降本增效的有效循環。

能源消耗

本集團的能源消耗類型主要有天然氣、汽油、電力等。為確保各營運點的營運過程符合能源使用效益，本集團承擔監督、檢查、調整及評估各營運點的能源消耗的責任。同時，為加強節能監督，降低本集團整體能源消耗，不斷提高資源綜合利用效率，我們已制定相應的能源使用效益目標，已設立《節能管理制度》，成立並授權節能工作領導小組執行日常節能工作，如負責日常節能管理工作的領導，對節能工作小組進行監督、收集和上報相關資料，對正常運行能耗資料進行統計分析、發現用能異常情況、查找原因、制定整改措施並及時上報，指導和教育員工增強節約意識等工作。

ENVIRONMENTAL PROTECTION (CONTINUED)

環境保護 (續)

For example, in addition to establishing the leading group for energy conservation and carrying out energy conservation publicity, Anji Power Plant has formulated an “Energy-saving Assessment Reward and Punishment System” to encourage departments and workshops to put forward feasible energy conservation plans and offer corresponding rewards, so as to mobilise all employees to be active in energy conservation, vigorously carry out energy planning and energy conservation, and increase production and efficiency through energy conservation. At the same time, Anji Power Plant has formulated the “Energy-saving and Consumption reduction Target Responsibility System” based on the principles of openness, fairness and impartiality. An energy conservation evaluation and consumption reduction assessment team is formed by the leading group for energy conservation to assess each energy utilisation department, with the indicators of energy conservation and consumption reduction (including the indicators of comprehensive energy consumption per RMB10,000 output (tons of standard coal/RMB10,000), electricity consumption, steam consumption, water consumption, etc.) and the indicators of energy conservation and consumption reduction measures (including the construction of the leading organisation, construction of the working organisation, implementation of energy conservation supervisor, implementation of responsibility system, promotion and training, etc.) as two main assessment objectives. Units that complete and complete ahead of the progress are commended and rewarded, while departments that fail to complete are required to rectify the situation within a certain period of time, so as to strengthen the responsibility of staff and fully achieve the guiding and motivating effect of energy conservation policies to ensure the realisation of energy conservation and consumption reduction objectives.

以安吉電廠為例，安吉電廠在成立節能工作領導小組，進行節能宣傳之外，另設有《節能考核獎懲制度》，鼓勵部門和車間提出可行的節能計劃，並給予相應的獎勵，以調動全體員工對節能的積極性，大力開展計劃用能、節約用能，以節能求增產、以節能增效益。同時，安吉電廠制定《節能降耗目標責任制》，以公開、公平、公正為原則，由節能工作領導小組組成節能降耗評價考核工作組，對各用能部門進行考核，以節能降耗指標（包括工業萬元產值綜合能耗（噸標煤／萬元）、電耗、汽耗、取水量等指標）和節能降耗措施指標（包括領導機構建設、工作機構建設、節能專管員落實、責任制落實、宣傳培訓等內容）兩項指標為主要考核目標，並對完成和超額完成目標的單位予以表彰獎勵，考核等級為未完成的部門，須限期整改，以強化工作人員責任，充分發揮節能政策的引導和激勵作用，確保完成節能降耗目標任務。

ENVIRONMENTAL PROTECTION (CONTINUED) 環境保護 (續)

The Group also insists on the full utilisation of energy. For example, the Operating Stations generate electricity from waste heat. Waste heat generated by gas turbines is used to heat boilers with water to produce steam, causing steam turbines to generate electricity. Jingxing Power Plant, Anji Power Plant, Quzhou Power Plant and Bluesky Power Plant also install solar panels on the rooftops of their buildings for photovoltaic power generation, with the electricity generated mainly for internal use and the surplus electricity being sold on the grid. The electricity generated from photovoltaic power for internal use is also equivalent to the offsetting of conventional energy consumption.

In the future, we will further deepen the setting of environmental objectives at each Operating Station to achieve more effective tracking management and effect assessment.

During the Year, the Group's Operating Stations continued to arrange the generation units to generate electricity in line with the peak demand of the power grid of the Zhejiang Provincial Government. Please refer to the "Overview of Key Performance Indicators (KPIs)" in this Report for specific breakdown of energy consumption by type.

本集團亦堅持能源的充分利用，如在各營運點進行餘熱發電，透過燃氣輪機所產生的餘熱，加熱鍋爐用水產生蒸汽，推動蒸汽輪機進行發電；京興電廠、安吉電廠、衢州電廠及藍天電廠亦於電廠建築物屋頂加裝太陽能板進行光伏發電，所發電力主要作自用，剩餘電力會上網銷售。光伏發電電力自用部分亦相當於抵消傳統能源消耗。

未來，我們還將進一步在各營運點深化環境目標的設定，以實現更有效的跟蹤管理與效果評估。

本年度，本集團各營運點繼續配合浙江省政府的電網頂峰需求安排發電機組發電。具體按類型劃分的能源消耗量請見本報告「關鍵績效指標總覽」。

ENVIRONMENTAL PROTECTION (CONTINUED)

環境保護 (續)

Use of Water Resources

The Group is committed to practicing the concept of water conservation. In order to improve water efficiency in the production process, we have formulated corresponding water efficiency targets and implementation plans. For example, Jingxing Power Plant continuously improved the water utilisation efficiency of the unit system and reduced water leakage of the equipment. Each Operating Station is in strict compliance with the “Water Law of the People’s Republic of China”, “Regulations on Water Conservation Management of Thermal Power Plants of the State Power Corporation” and other relevant regulations, and has formulated the “Management System on Water Conservation” and other relevant systems at each Operating Station. All power plants have set up the leading taskforce for water conservation, production departments and relevant management units to coordinate water conservation.

At the power plant level, the leading taskforce for water conservation assumes responsibility for plant-wide water conservation management by implementing guidelines and policies, as well as promoting water conservation training programs and promotion campaigns, while the production department implements water conservation improvement projects and sets water conservation targets, under which, the water conservation engineers will be responsible for preparing the annual plan on water conservation, implementing and supervising water-saving measures, and assessing, inspecting and accepting water conservation proposals.

水資源使用

本集團致力於實踐節約用水理念，為在生產過程中提高用水效益，我們制定了相應的用水效率目標和實施計劃，如京興電廠持續提升機組用水系統的利用效率並減少設備漏水等。各營運點嚴格遵循《中華人民共和國水法》及《國家電力公司火電廠節約用水管理辦法》等有關規定，在各營運點制定《節水管理制度》等相關制度。各電廠均設有節水工作領導小組、生產部門及相關管理單位統籌節水工作。

在電廠層面，節水工作領導小組承擔全廠節水管理責任，落實各項方針及政策，並推動節水培訓及宣傳工作，而生產部門則落實節水改造項目及制定節水目標，並由節水管理工程師負責制定節水年度計劃、落實及監督節水措施，以及評估、檢查及驗收節水工程方案。

ENVIRONMENTAL PROTECTION (CONTINUED)

環境保護 (續)

The main responsibilities of the leading taskforce for water conservation:

- Organising and arranging the implementation of water and electricity conservation work, and carrying out promotion and education on water conservation;
- Responsible for the management of water conservation and to achieve the “four in place” of water conservation, i.e. water consumption plan in place, water conservation objective in place, water conservation measures in place and water conservation system in place; consistently implementing water conservation guidelines, policies, laws and regulations, and strengthening daily water conservation promotion, so that the promotion work can reach all parts and work groups;
- Responsible for water conservation plan and statistics, business training of staff in the water consumption department, and preparation for a water conservation system; responsible for organising and promoting advanced experience, technology and exchanges in water conservation; and
- Responsible for the specific organisation and coordination of water conservation work and various tasks assigned by higher-level of leading group.

節水工作領導小組主要職責：

- 組織安排節水節電工作的實施，開展節約用水宣傳教育工作；
- 負責節約用水的管理，做到節水工作「四到位」，即用水計劃到位、節水目標到位、節水措施到位、節水制度到位。貫徹執行有關節水工作的方針、政策和法律法規，加強日常性的節水宣傳，使宣傳工作深入到各部分及班組；
- 負責節約用水計劃和統計工作、用水部門人員的業務培訓、節水工作制度的編製；負責組織推動節約用水先進經驗、技術和交流；及
- 負責節水工作的具體組織協調工作以及上級工作領導小組交辦的各項工作。

ENVIRONMENTAL PROTECTION (CONTINUED) 環境保護 (續)

Each Operating Station also adopts different water saving measures to reduce water wastage and increase reuse rate, such as using water-saving faucets, applying insulation materials to prevent pipe breakage, regularly monitoring the water consumption, and inspecting faucets and pipes. Repair will be arranged as soon as possible once leaks are found, sticking water conservation signs and promotion materials, etc.

各營運點亦採取不同節水措施以減少用水浪費及提升回用率，例如：使用省水的水龍頭、為喉管鋪設保溫物料防止管道破裂、定期監察用水量，以及檢查水龍頭及喉管，如發現任何洩漏則儘快安排維修、黏貼節水標識及宣傳品等。



Water-saving Slogan
節水標語

The Group extracts water from the municipal network for domestic use, and the production water of each Operating Station is mainly obtained from the surface water of nearby rivers, such as the Grand Canal, Fuxi, the confluence of Huxi and Xitiaoxi, and Shengjiaqiao Port. Water abstraction permits have been obtained from the local water resources bureau for the relevant water abstraction methods. During the Reporting Period, the Group does not have any problem in sourcing water that fit for purpose.

本集團從市政管網抽取生活用水，各營運點的生產用水則主要取自鄰近河流，如：大運河、阜溪、許溪與西苔溪匯流及盛家橋港的地表水。有關取水方法已獲當地水利局審批的取水許可證。本報告期內，本集團在求取適用水源上無任何問題。

ENVIRONMENTAL PROTECTION (CONTINUED)

環境保護 (續)

Green Office

The Group attaches great importance to green office management in the daily work process. In terms of office supplies, all Operating Stations have established the “Office Supplies Management System” to standardise and ensure the rational use of office supplies. Public office consumables (such as paper, ink cartridges, etc.) are included in the departmental office expense assessment, and cleaning supplies (such as brooms, towels, etc.) for each department also need to be included in the departmental office expenses, which saves costs and eliminates waste; in terms of water and electricity use, each Operating Station calls and reminds employees to save water and electricity by posting slogans in the office. In addition, all Operating Stations have implemented paperless offices and have taken various measures to reduce paper consumption, including using electronic communication devices, presetting printers and photocopiers for double-sided printing, recycling envelopes and folders for internal documents, and encouraging the use of electronic communication devices and electronic filing. Some Operating Stations provide services such as shuttle bus running between the Operation Station and the public transportation spots during rush hours, employees are encouraged to use public transportation.

EMISSIONS

The Group causes waste gas emissions, greenhouse gas emissions, wastewater emissions and waste generation from its production processes. The Group strictly abides by the “Law of the People’s Republic of China on the Prevention and Control of Atmospheric Pollution”, “Law of the People’s Republic of China on the Prevention and Control of Environmental Pollution by Solid Wastes” and “Water Pollution Prevention and Control Law of the People’s Republic of China”, and has respectively formulated the “Management and Supervision System on Environmental Protection”, “Environmental Protection Management Standards”, “Management Rules on Greenhouse Gas Emissions”, “Management Rules on Waste” and “Management Standards on Online Monitoring Systems for Smoke and Fumes (Wastewater)” at each Operating Station, with an aim to ensure effective emission management and reduce negative environmental impacts caused by productions and operations.

綠色辦公

本集團重視在日常工作中的綠色辦公管理。在辦公用品方面，各營運點建立《辦公用品管理制度》以規範並保障辦公用品的合理使用。公用的辦公耗材（如紙張、墨盒等）會計入部門辦公費用考核，各部門清潔衛生用品（如掃帚、毛巾等）也需計入部門辦公費用，在節約成本的同時杜絕浪費；而在水電使用方面，各營運點通過在辦公場所張貼標語的方式，號召並提醒員工節水節電。此外，各營運點實行無紙化辦公，並採取不同措施減少紙張的使用，包括：使用電子通訊設備、將打印機及複印機預設為雙面印刷、循環使用信封及檔案夾發送內部檔案，以及鼓勵採用電子通訊設備及電子存盤。部分營業點提供上下班尾程班車接駁等服務，鼓勵員工使用公共交通。

排放物

本集團在生產過程中會造成廢氣排放、溫室氣體排放、廢水排放及廢棄物產生。本集團嚴格遵循《中華人民共和國大氣污染防治法》《中華人民共和國固體廢物污染環境防治法》及《中華人民共和國水污染防治法》，於各營運點分別制定《環境保護管理監督制度》《環境保護管理標準》《溫室氣體排放管理規定》《廢棄物管理規定》及《煙氣（廢水）在線監測系統管理標準》，確保有效管理排放物，減低生產營運對環境的負面影響。

ENVIRONMENTAL PROTECTION (CONTINUED)

環境保護 (續)

Environmental targets 環境目標	Achievements in 2025 2025年達成情況	Achievements in 2024 2024年達成情況
All emissions of pollutants meeting the standards 各項污染物100%達標排放	Achieved 已達成	Achieved 已達成
An utilisation rate of 100% for environmental protection treatment facilities 環保治理設施投入率100%	Achieved 已達成	Achieved 已達成

Waste Gas Management

As an enterprise focused on natural gas power generation, air emissions from production activities of the Group comprise nitrogen oxides (NOx), sulphur oxides (SOx) and respirable suspended particulates (RSP) produced from combustion of natural gas in gas-fired boilers and consumption of fossil fuels by vehicles.

Each Operating Station has formulated various policies, including the “Three Wastes Environmental Protection Management System” and “Assessment and Management Standards for Excessive Pollutant Emission”, pursuant to which waste gas emissions are regulated, while detection and monitoring strategies are established. To reduce NOx emissions, different measures and technologies have been adopted at each Operating Station, such as water injection and low-NOx combustion technology at Jingxing Power Plant, and low-NOx combustion technology at Anji Power Plant, Deneng Power Plant, Bluesky Power Plant and Quzhou Power Plant.

廢氣管理

作為天然氣發電企業，本集團於營運過程產生不同的空氣污染物，包括燃氣鍋爐燃燒天然氣及車輛消耗化石燃料所產生的氮氧化物、硫氧化物和可吸入懸浮粒子。

各營運點均已制定《三廢環保管理制度》及《污染物超標排放考核管理標準》等政策控制廢氣排放及制定監察工作。各營運點分別採取不同措施及技術，如京興電廠採用注水低氮燃燒技術，而安吉電廠、德能電廠、藍天電廠及衢州電廠則採用低氮燃燒技術減少氮氧化物排放。

ENVIRONMENTAL PROTECTION (CONTINUED) 環境保護 (續)

For effective control over the intensity of waste gas emissions, waste gas emission monitoring also constitutes an important element as part of the control measures. Each Operating Station also appoints third party monitoring agencies to monitor fume emission on a regular basis to ensure that the emissions are in compliance with the local regulations and requirements. Certain power plants, including Anji Power Plant and Deneng Power Plant, also established systems such as the “Management Standards on Online Monitoring Systems for Smoke and Fumes (Wastewater)” to regulate the procedures for monitoring waste gas so as to ensure the compliance with the “Emission Standard of Air Pollutants for Thermal Power Plants”. Anji Power Plant engages a specialized company on a quarterly basis to prepare exhaust gas testing reports, so as to better monitor exhaust emissions and strengthen internal environmental management.

In addition, each Operating Station encourages their employees to use green transportation, and, where practicable, to use video or teleconferencing instead of business travel to reduce the use of corporate vehicles.

Waste gas emissions for the Year were overall higher than last year, for details of emissions of NO_x, SO_x and RSP, please refer to the “Overview of Key Performance Indicators (KPIs)” in this Report.

為有效控制廢氣排放濃度，進行廢氣排放監測亦是其中一項重要控制措施。各營運點亦會定期委託第三方監測機構對煙氣進行監測，確保排放符合當地法規要求。部分電廠如安吉電廠及德能電廠等亦設有《煙氣（廢水）在線監測系統管理標準》等制度，規範廢氣監測流程，確保符合《火電廠大氣污染物排放標準》。安吉電廠於每季度聘請相關公司出具廢氣檢測報告，更好監測廢氣排放情況，加強內部環境管理。

此外，各營運點亦鼓勵員工採用綠色交通出行，並在可行的情況下，使用視頻或電話會議代替商務出行，以減少使用公司車輛。

本年度的廢氣排放量較去年整體有所增加，具體氮氧化物、硫氧化物和可吸入懸浮粒子排放量請見本報告「關鍵績效指標總覽」。

ENVIRONMENTAL PROTECTION (CONTINUED)

環境保護 (續)

Waste Treatment

The Group generates different types of hazardous and non-hazardous waste in the course of its operations, including waste chemicals, waste motor oil, domestic and construction waste, scrap metal, waste paper and waste packaging materials. Each Operating Station has established policies and procedures for waste disposal such as the “Solid Waste Management System”, “Management Plans for Hazardous Waste – Formulated Guidelines”, “Waste Oil Management System” and “Three Wastes Environmental Protection Management System”. The Group’s environmental target is to reduce pollutant emissions (including waste). Therefore, we actively promote the development concept of green environmental protection to reduce the impact of waste on the environment.

廢棄物處理

本集團在營運過程中產生不同類型的有害及無害廢棄物，包括廢化學危險物、廢機油、生活及建築垃圾、廢金屬、廢紙張及廢包裝材料。各營運點已制定《廢棄物管理制度》《危險廢物管理計劃制定指南》《廢油管理制度》或《三廢環保管理制度》等廢棄物處理的政策及流程。本集團以減少污染物排放（包括廢棄物）作為環境目標，為此，我們積極推行綠色環保的發展理念，以減少廢棄物對環境的影響。

Type of Waste 廢棄物類別	Waste 廢棄物	Treatment 處理方法
Recyclable waste 可回收廢棄物	Waste packaging, waste paper, scrap metals, and waste oil 廢包裝物、廢紙、廢金屬、廢油料	<ul style="list-style-type: none"> Waste packaging materials and waste paper are sorted for collection, and recyclers are appointed for recycling 分類收集廢包裝材料、廢紙，並委託回收商進行回收 Scrap metals are sorted by the types of metal for collection, and recyclers are appointed for recycling 廢金屬類，按金屬類別分類，並委託金屬回收商回收

ENVIRONMENTAL PROTECTION (CONTINUED)

環境保護 (續)

Type of Waste 廢棄物類別	Waste 廢棄物	Treatment 處理方法
<p>Non-recyclable and non-hazardous waste 不可回收無害廢棄物</p>	<p>Domestic waste and construction waste 生活垃圾、建築垃圾</p>	<ul style="list-style-type: none"> Waste oil is collected and sorted into barrels, after sorting separately, is labeled obviously and piled up, and managed by each department during the pile-up period, and recyclers are appointed for recycling 收集廢油料並將廢油分類桶裝，隔離後作明顯標識後堆放，堆放期間由各部門負責管理，並委託回收商回收 Domestic waste, after sorting, is delivered to the garbage dump daily 生活垃圾經分類後，每天運送到垃圾堆放處 Qualified recyclers are appointed to collect construction waste regularly 委託有資質的回收商定期收集建築垃圾

ENVIRONMENTAL PROTECTION (CONTINUED)

環境保護 (續)

Type of Waste 廢棄物類別	Waste 廢棄物	Treatment 處理方法
Hazardous waste 有害廢棄物	Waste chemicals, waste motor oil, waste mineral oil, waste drugs, waste batteries, waste fluorescent tubes, waste paint, and waste ink cartridges 廢化學危險品、廢機油、廢礦物油、廢藥品、廢電池、廢日光燈管、廢油漆、廢墨盒	<ul style="list-style-type: none"> • Office and domestic waste (including oily rag, waste oil barrels, waste drugs, chemicals, etc.) are put into the fixed garbage dump for isolated storage, and recyclers are appointed to recycling • 辦公、生活廢棄物 (含油抹布、廢油桶、廢藥品、化學品等) 放入固定堆放處進行隔離存放，並委託有資質的危廢處理商進行收集 • Waste batteries, waste fluorescent tubes, waste glue, detergent, etc. are disposal of by the qualified disposal units that are contacted by each department • 廢電池、廢日光燈管、廢膠水、清潔劑罐等，由各部負責聯繫有資質的處置單位處置 • Remaining non-recyclable hazardous waste is stored separately after classification before appointing qualified hazardous waste processing providers for collection regularly • 將其餘不可回收有害廢棄物分類存放，並委託有資質的危廢處理商定期進行收集

ENVIRONMENTAL PROTECTION (CONTINUED)

環境保護 (續)

To ensure the safety of waste treatment, each Operating Station not only separates waste for storage but also places fire-fighting equipment and anti-diffusion facilities at waste dumps. In addition, fire safety channels are maintained in sites to reduce the safety risk caused by the leakage of hazardous materials or fire, and the ground is also treated with anti-leakage to prevent secondary pollution. The waste treatment personnel at each Operating Station also regularly inspect the firefighting equipment and waste treatment processes to ensure that all equipment complies with local safety regulations and standards.

During the Year, a total of 1.6 tonnes of hazardous waste was generated by the Operating Stations, mainly consisting of waste mineral oil and mineral oil-containing waste, etc. Each Operating Station has sorted hazardous waste for storage and appointed approved hazardous waste treatment companies for collection and processing. Meanwhile, the Operating Stations generated a total of 30.3 tonnes of non-hazardous waste during the Year, mainly including domestic waste, waste paper, waste plastics, scrap metals, kitchen waste, and sludge from water purifiers. For waste disposal, the Group's waste was collected and transported by recyclers or waste processing providers during the Year.

Wastewater Reuse and Discharge

Wastewater of the Group mainly includes production wastewater and domestic wastewater. To effectively reduce the impact of wastewater on the surrounding environment, the Group has formulated the "Three Wastes Environmental Protection Management System" and "Administration of Automatic Monitoring of Pollution Sources" in accordance with the requirements of the "Integrated Wastewater Discharge Standard", the drainage system of the plant area adopts the rain and wastewater diversion system, so that various types of wastewater can be collected, reused, or filtered for discharge. Anji Power Plant also engages relevant companies to issue wastewater testing reports on a quarterly basis, so as to better monitor water quality and strengthen internal environmental management.

為確保廢棄物處理安全，各營運點除將垃圾分類存放外，亦於垃圾堆放處擺設消防設備器材及防揚散設備，並於場地內設有消防安全通道，減低因危險品洩漏或火災而所帶來的安全風險，地面亦經防滲漏處理，防止二次污染。各營運點的廢棄物處理人員亦會定期檢查各項消防設備及廢棄物處理流程，確保所有設備符合當地安全法規及標準。

本年度，各營運點共產生1.6公噸有害廢棄物，主要包括廢礦物油及含礦物油廢物等。各營運點已將有關有害廢棄物分類存放，並委託認可的危廢處理公司進行收集及處理。同時，各營運點於年內共產生30.3公噸的無害廢棄物，主要包括：包括生活垃圾、廢紙、廢塑料、廢金屬、廚餘，以及淨水器產生的淤泥等。垃圾處置方面，本集團於年內將廢棄物交由回收商或廢棄物處理商收集及運走。

廢水回用及排放

本集團的廢水主要包含生產廢水及生活污水。為了有效減輕廢水對周邊環境的影響，本集團按照《污水綜合排放標準》要求制定《三廢環保管理制度》及《污染源自動監控管理辦法》，廠區排水採用雨污分流制，從而將各種廢水分類收集、回用或過濾處理排出。安吉電廠還於每季度聘請相關公司出具廢水檢測報告，更好監測水質情況，加強內部環境管理。

ENVIRONMENTAL PROTECTION (CONTINUED)

環境保護 (續)

In respect of wastewater generation, the Group aims at zero discharge. As a non-high water-consuming enterprise, the wastewater generated by each of our Operating Stations mainly comes from the neutralised water generated during water production, which is different from the wastewater generated by industrial production. The neutralised water generated by water production will be stored in the storage pool for unified and comprehensive treatment, and the recycling will be realised after reaching the reuse standards.

In respect of domestic wastewater, domestic wastewater treatment devices are placed at each Operating Station when the power plant is designed. After treatment, partial domestic wastewater can be directly recycled for use, or directly incorporated into the municipal pipe network in accordance with the local discharge regulations and treated uniformly by the municipal government.

During the Year, a total of 37,784 m³ of wastewater was reused by Operating Stations, mainly for watering flowers, cleaning road surface and being used in processing etc.

在生產廢水方面，本集團以零排放為目標。各營運點作為非高耗水企業，所產生的廢水主要來源於制水時候產生的中和水，與工業化生產所產生的廢水不同。制水所產生的中和水將存放到存儲池，進行統一的綜合處理，達到再利用標準後實現循環利用。

在生活污水方面，各營運點在電廠設計時即設置了生活污水處理裝置，生活污水處理後部分可直接實現循環使用，或按照地方排放規定直接納入市政管網，由市政統一處理。

本年度，各營運點已回用廢水37,784立方米，主要用作澆花、清洗路面、利用於工藝中等。

ENVIRONMENTAL PROTECTION (CONTINUED)

環境保護 (續)

RESPONDING TO CLIMATE CHANGE

With the PRC's goal and vision of peaking carbon dioxide emission and achieving carbon neutrality, the implementation of climate-related works will be an important task in corporate sustainable development. The Group implements the green and low-carbon strategy. As an integrated energy supplier, in addition to insisting on providing clean, low-carbon, safe and efficient power energy guarantee for the PRC, the Group also gradually improves its corporate governance, incorporates climate risks into the comprehensive risk management system, improves the indicators and targets setting and tracking mechanism, and actively strengthens disclosure of climate-related information to promote in-depth exploration and practice of the green and low-carbon transformation.

Governance

In terms of governance, the Group has established the ESG governance structure. The ESG governance structure covers the overall governance of ESG-related work to address climate change. The Board is responsible for monitoring climate-related risks and opportunities, authorising the ESG working group to carry out ESG management, jointly identifying and studying the impact of climate change on our business activities, the ESG working group provides support to the Board in its oversight of issues related to climate change (the details of which are as set out in the section headed "ESG Governance" of this Report). With reference to the framework set out in the Task Force on Climate-related Financial Disclosures ("TCFD"), the Group gradually carried out status review, strategy formulation, risk management, indicator and target identification and management on the risks and opportunities that the Group may face due to climate change.

應對氣候變化

隨着中國碳達峰目標和碳中和願景的提出，推進應對氣候變化相關工作，將成為企業可持續發展中的關鍵性任務。本集團明確綠色低碳戰略，作為一家綜合能源供應商，除堅持為國家提供清潔低碳、安全高效的電力能源保障外，亦逐步完善公司治理，將氣候風險納入全面風險管理體系，強化指標和目標的設定與追蹤，積極加強氣候相關信息披露，促進綠色低碳轉型方面的深入探索和實踐。

管治

在管治方面，本集團已建立ESG管治架構，覆蓋對ESG相關工作的全面管治，其中包括應對氣候變化的管治。董事會負責對氣候相關風險和機遇的監督，授權ESG工作組開展ESG管理工作，共同識別與研究氣候變化對我們經營活動的影響。ESG工作組向董事會就應對氣候變化相關事宜的監督提供支持。（具體內容請見本報告「ESG管治」一節）。本集團參考氣候相關財務信息披露（簡稱「TCFD」）框架，對本集團可能面臨的因氣候變化導致的風險和機遇逐步開展現狀審視、戰略制定、風險管理、指標和目標識別與管理。

ENVIRONMENTAL PROTECTION (CONTINUED)

環境保護 (續)

Strategy⁶

Climate-related risks include risks in relation to the transition to a low-carbon economy (the “Transition Risks”) and risks in relation to the physical impact of climate changes (the “Physical Risks”). Transition Risks include political and legal risks, technical risks, market risks and reputational risks, while Physical Risks include acute physical risks (such as typhoons, floods and other extreme weather conditions) and chronic physical risks (persistent high temperatures and other changes in climate pattern). In order to address climate changes, in addition to preventing risks, the Group shall also put great efforts in identifying opportunities, including energy sources, products, markets and resilience.

策略⁶

氣候相關風險包括與低碳經濟轉型相關的風險（簡稱「轉型風險」）和與氣候變化的實體影響相關的風險（簡稱「物理風險」）。轉型風險可分為政策與法律風險、技術風險、市場風險和聲譽風險；物理風險包括急性物理風險（如颱風、洪水等極端天氣）和慢性物理風險（氣候模式轉變如持續性高溫）。本集團應對氣候變化，並非止於風險防範，更要主動辨識機遇，包括能源來源、產品、市場和適應力。

Type 類型	Climate-Related Risks 氣候相關風險	
Physical Risks 物理風險	Acute 急性	<ul style="list-style-type: none"> Unexpected rainstorms, typhoons, floods and other extreme weather conditions may cause measurement inaccuracy, control deviations, power equipment trips and other events, which may affect or interrupt the power supply. In addition, significant extreme weather disaster events highly cause damage to equipment and safety accidents, which would increase unfavourable factors and potential safety hazards. 暴雨、颱風、洪水等極端天氣事件的突發可能會引發如測量失准，控制偏差或設備跳閘等導致電力供應受影響乃至中斷的事件。重大極端天氣災害事件也極易引發設備徹底損壞和員工安全事故，增加不利因素及安全隱患。
	Chronic 慢性	<ul style="list-style-type: none"> Long-term changes in climate patterns (e.g. persistent high temperatures, extremely cold weather, etc.) may cause increased operating costs due to increased cooling requirements in summer or increased equipment maintenance costs. Long-term changes in climate patterns may also tighten the power supply and demand in extremely cold seasons and high temperature seasons, bringing challenges to power guarantee. 較為長期的氣候模式轉變（例如持續高溫、嚴寒等）可能引發如夏季製冷需求增加所導致的營運成本增加或設備維護保養成本增加等情況。長期氣候模式轉變亦可能加劇嚴寒季節和高溫季節的電力供需緊張，為保電工作提出挑戰。

⁶ We are currently conducting an assessment and will continue to refine our approach in the future.

⁶ 正在開展相關評估工作，未來將持續完善。

ENVIRONMENTAL PROTECTION (CONTINUED)

環境保護 (續)

Type 類型

Climate-Related Risks 氣候相關風險

Transition Risks 轉型風險

Policies and Laws
政策和法律

- With the improvement and promulgation of the policies, the regulatory authorities will adopt more stringent measures to limit greenhouse gas emissions and strengthen the disclosure requirements of greenhouse gas emissions, which will increase the Group's operating costs and compliance expenses. Currently, the Operating Stations have completed the registrations on the domestic carbon market trading platform. As an emerging market, the carbon market may have a great impact on the operation and management of power companies with the gradual clarification of carbon trading and other rules. For example, companies may have to consider the carbon emission constraints, study development strategies and investment plans under the carbon market, and consider the impact of the carbon price, carbon asset management and other issues, while formulating development strategies. It may also have an impact on the development of power transactions and the formulation of power generation plans. In addition, the changes in the policies may cause high-energy consuming equipment and other existing fixed assets to be retired early, and there may be the risk of legal liability, fines or property loss due to non-compliance with climate-related policies or laws.
- 隨着政策的完善和出臺，監管部門必將採取愈加嚴格的溫室氣體限排措施，並強化溫室氣體排放披露要求，增加本集團營運成本和合規開支。目前，各營運點已在全國碳市場交易平台完成註冊。碳市場作為一個新興的市場，後續隨着碳交易等規則的逐步明朗，對電力企業經營管理可能會產生較大影響，如企業在制定發展戰略時可能需考慮碳排放約束，需研究碳市場環境下的發展策略和投資規劃，需考慮碳價的影響及碳資產管理等問題，還可能對電力交易的開展、發電計劃的制定等方面產生影響。此外，政策的變動可能導致高耗能設備等現有固定資產需提前淘汰，亦可能出現由於未符合相關氣候政策或法律要求被依法追究法律責任或面臨罰款、出現財務損失等風險。

ENVIRONMENTAL PROTECTION (CONTINUED)

環境保護 (續)

Type 類型	Climate-Related Risks 氣候相關風險
<p>Transition Risks <i>(Continued)</i> 轉型風險 (續)</p> <p>Technology 技術</p> <p>Market 市場</p> <p>Reputation 聲譽</p>	<ul style="list-style-type: none"> • With the gradual escalation of environmental and low carbon requirements, production techniques may need to be innovated from time to time to meet environmental requirements. There is a possibility that the front-end costs for investing in or applying new techniques and deploying new operations and processes will increase accordingly. • 隨着環保要求和低碳要求的逐步升級，生產技術可能需要隨之革新以應對環保要求，新技術的投資或採用、部署新操作和流程的前端成本存在因此增加的可能性。 • With the guidance of policies and markets, as well as the society's focus on the issues caused by climaterelated risks, as an integrated energy supplier, the Group's development in green and low-carbon energy may need to be accelerated to meet the expectations of stakeholders. • 隨着政策和市場的引導，以及社會越來越聚焦氣候相關風險所帶來的問題，作為綜合能源供應商，本集團在綠色低碳能源方面的發展或需加速以滿足利益相關方的期望。 • Any violation of laws and regulations related to responding to climate change at each Operating Station may cause damage to the Group's reputation. • 若各營運點出現與應對氣候變化相關的違法違規行為，可能會造成本集團聲譽損害。

For the acute physical risks, each Operating Station is a power plant with good facilities, and there are some pre-design to prevent natural disasters in the design phase, extreme weather such as typhoons, rainstorms and high temperature weather have an impact on labour management (such as safety, absence from work, etc.), with a minor impact on the business. Meanwhile, in order to prevent the adverse effects that may be caused by extreme weather, each Operating Station has formulated emergency plans and regularly organised employees to conduct drills, to ensure the effective deployment of emergency plans. In the event of natural disasters such as typhoons, floods or strong convective weather, timely and effective measures are taken to minimise casualties, equipment damage and property losses caused by disasters.

就急性物理風險而言，各營運點均為設施良好的電廠，且在設計時對抗自然災害就有一定的預設計，所以颱風、暴雨、高溫等極端天氣除對勞動力管理（如安全、缺勤等）有所影響外，對業務本身的影響較小；同時，為防止極端天氣可能造成的不良影響，各營運點均制定應急預案並定期組織員工進行演練，並確保應急預案有效部署，在發生颱風、汛情或強對流氣象等自然災害時，能及時有效地採取措施，最大限度地減少災害造成的人員傷亡、設備損壞、財產損失。

ENVIRONMENTAL PROTECTION (CONTINUED) 環境保護 (續)

For the chronic physical risks, our operating costs may increase due to long-term changes in climate patterns. Meanwhile, it is imperative to reduce carbon under the background of the “dual carbon” goal. Whether it is the pressure from energy conservation and emission reduction or the benefit from the transformation of the energy structure, it can be predicted that natural gas power generation will become the main form of clean and efficient energy utilisation. For a long period of time, natural gas power generation will become a “bridge” between conventional energy and power generation in the future, with its role being more important in the future. Clean, efficient and advanced natural gas power generation will usher in wider prospects and more development opportunities in the PRC, and the rapid growth of the scale expansion of new energies including wind power and photovoltaics will also bring greater development potential to the new energy industry. The Group proactively captured the opportunities arising from green energy, leveraged the advantages of natural gas power generation and heating business with relatively low carbon emission intensity, strong dispatch-ability, clean, environmentally friendly and less pollution, so as to cover the dispatchable power shortfall arising from the reduction of coal-fired power generation output due to carbon peaking, which can help build a clean, low-carbon, safe and efficient energy system and enhance energy supply guarantee capabilities. The Group has also vigorously developed photovoltaic power generation projects in combination with its own operations and certain electricity generated from photovoltaic power projects has been used for external sales. In the future, with the goal of energy upgrading and transformation, the Group will actively promote the development of other clean energies and make contributions to energy conservation and emission reduction for the entire society.

就慢性物理風險而言，較為長期的氣候模式轉變可能會增加我們的營運成本。但同時，「雙碳」目標背景下減碳勢在必行，無論是節能減排帶來的壓力，還是能源結構轉型帶來的利好，都可以從中預見天然氣發電將成為清潔高效的主要能源利用形式，在相當長的一段時間內，天然氣發電將成為銜接傳統能源與未來能源發電的「橋樑」，且作用愈加突顯，清潔、高效、先進的天然氣發電在中國將迎來廣闊的前景和更大的發展機遇，而包括風電、光伏等新能源規模的快速增長，也將為新能源產業帶來更大的發展潛能。本集團積極把握綠色能源機遇，發揮天然氣發電和供熱業務所具備的碳排放強度相對較低、可調度能力強、清潔環保污染少的優勢，填補由於碳達峰削減燃煤發電量所產生的可調度電力缺口，為建設清潔低碳、安全高效的能源體系和提高能源供給保障能力提供助力。本集團亦結合自身營運大力佈局光伏發電項目，部分光伏發電已外售。未來，本集團將以助力能源升級轉型為目標，積極推進其他清潔能源的發展，為全社會的節能減排做出應有貢獻。

ENVIRONMENTAL PROTECTION (CONTINUED)

環境保護 (續)

For the transition risks, with the deepening of the society's understanding of climate change and the implementation of relevant policies, it may lead to strict regulation. Meanwhile, participating in carbon trading has a positive effect on the promotion of energy structure optimisation, the promotion of energy conservation and emission reduction, and the improvement of quality and efficiency of electricity companies. The Group will continue to pay attention to the impact of climate changes on the business of the Group, comply with the government policies, actively participate in carbon trading (the Group's Operating Stations have been included in the national unified carbon market management, but the policy of natural gas power plants as the main body of carbon trading has not yet been clarified), and further improve the formulation of the strategies, risk management as well as indicators and targets identification and management. We will cooperate with other social sectors to address climate change in an effort to achieve a sustainable development.

就轉型風險而言，隨着社會各界對於氣候變化的認知深入以及相關政策的推行落實，也可能帶來監管從嚴，同時，參與碳交易亦對推動能源結構優化、推動用電企業節能減排、提質增效有着積極的作用。本集團將持續關注氣候變化對本集團業務的影響，充分響應政策要求，積極參與碳交易（本集團各營運點已被納入全國統一碳市場管理，但天然氣電廠作為碳交易主體的政策尚未明確），並進一步完善戰略制定、風險管理、指標和目標識別與管理，攜手各界一起應對氣候變化，實現共同的可持續發展。

ENVIRONMENTAL PROTECTION (CONTINUED)

環境保護 (續)

Risk Management

The Group has established a systematic process for the identification, assessment, response, management and monitoring of climate-related risks and opportunities, ensuring that it can maintain stable long-term operations in the face of challenges brought by climate change. This process comprises the following components:

風險管理

本集團落實了系統性的氣候相關風險和機遇識別、評估、應對及管理、監測流程，確保集團在面臨氣候變化的挑戰時能夠維持長期穩定經營。具體包括以下幾個環節：

Identification of Climate-related Risks and Opportunities 氣候風險和機遇識別	Risk Assessment 風險評估	Risk Response 風險應對	Risk Monitoring and Reporting 風險監控及報告
<p>The Group has established a regularised mechanism for collecting climate-related risks and opportunities, with a focus on key areas including transition risks, physical risks and low-carbon development opportunities. Each department updates the climate risk and opportunity database on a quarterly basis, which is centrally consolidated and managed by the ESG working group. Taking into account industry trends, domestic and international climate regulatory policies, the “dual carbon” targets and stakeholder concerns, the Group conducts periodic dedicated identification and analysis to ensure forward-looking and targeted identification of potential and emerging climate-related risks and opportunities.</p>	<p>The Group adopts a combination of qualitative and quantitative approaches to assess identified climate-related risks across key dimensions, including the likelihood of occurrence, impacts on business models and value chains, and potential financial implications. The ESG working group regularly convenes risk review meetings, focusing on material climate-related risks, and conducts precise identification, appropriate categorisation and scientific grading, thereby forming professional and actionable risk assessment conclusions.</p>	<p>Based on the grading results of climate risk assessments, the Group formulates and implements differentiated response strategies, including risk avoidance, prevention, mitigation, transfer and acceptance. A continuous tracking mechanism for climate risks has been established to regularly evaluate the effectiveness of response measures and dynamically optimise them. For material climate-related risks, the Group formulates and refines contingency plans to enhance emergency response and handling capabilities.</p>	<p>The Group has established a regular climate risk monitoring and reporting mechanism. The ESG working group periodically reviews climate risk conditions in key areas, the effectiveness of control measures and the progress of response actions, and submits dedicated risk assessment and management reports to the Board as required. Leveraging an information-based management system, the Group conducts dynamic monitoring of key climate risk indicators to ensure timely identification, rapid feedback and efficient handling of risk changes.</p>

ENVIRONMENTAL PROTECTION (CONTINUED)

環境保護 (續)

Identification of Climate-related Risks and Opportunities 氣候風險和機遇識別	Risk Assessment 風險評估	Risk Response 風險應對	Risk Monitoring and Reporting 風險監控及報告
---	--------------------------------	------------------------------	---

集團已建立常態化氣候相關風險與機遇收集機制，重點聚焦氣候轉型風險、物理風險及低碳發展機遇等核心氣候相關領域。各部門每季度對氣候風險與機遇信息數據庫進行更新，由ESG工作組統一匯總管理。結合行業發展趨勢、國內外氣候監管政策、「雙碳」目標要求及利益相關方關切，定期開展專項識別研判，確保前瞻性、針對性地識別潛在及新興氣候相關風險與機遇。

集團採用定性與定量相結合的評估方法，從氣候風險發生可能性、業務模式和價值鏈影響、潛在財務影響等核心維度，對已識別的氣候相關風險開展全面評估。ESG工作組定期組織風險審查會議，聚焦重大氣候相關風險，開展精準識別、合理分類與科學分級，形成專業、可落地的風險評估結論。

集團依據氣候風險評估分級結果，制定並實施差異化應對策略，涵蓋風險規避、預防、減緩、轉移及接受等措施。建立氣候風險持續跟蹤機制，定期評估應對措施有效性並動態優化；對重大氣候相關風險制定並完善應急預案，提升應急響應與處置能力。

集團建立常態化氣候風險監控與報告機制，由ESG工作組定期審閱關鍵領域氣候風險狀況、管控成效及應對進展，並按要求向董事會提交專項風險評估與管理報告。依託信息化管理系統，對核心氣候風險指標實施動態監測，確保風險異動及時發現、快速反饋與高效處置。

ENVIRONMENTAL PROTECTION (CONTINUED)

環境保護 (續)

Indicators and Targets

In addition to the establishment of the governance structure and the identification of risks and opportunities, the Group has identified the indicators related to monitoring environmental, social and climate risks with reference to the recommendations of the TCFD. Greenhouse gas emissions from the Operating Stations mainly come from fuel combustion of stationary equipment, and physical or chemical processes. For this purpose, the Group's Operating Stations have also formulated the "Management Rules on Greenhouse Gas Emissions" to regulate the management of greenhouse gas emissions based on its operational needs. In terms of greenhouse gas emissions, the Group has also calculated greenhouse gas emissions based on ISO14064, "Guidelines for Accounting and Reporting Greenhouse Gas Emissions Other Industrial Enterprises (Trial)" and other standards to clarify the establishment and tracking of relevant performance.

During the Year, the total greenhouse gas emissions generated by the Operating Stations were 104,113 tonnes of CO₂ equivalent (CO₂e), representing a decrease of 41.89% over the total greenhouse gas emissions in 2024, please refer to the "Overview of Key Performance Indicators (KPIs)" in this Report for specific breakdown of greenhouse gas emissions by type. The greenhouse gas intensity of the Operating Stations amounted to 0.28 tonnes of CO₂e/RMB10,000, with an overall downward trend of greenhouse gas intensity during the Year of approximately 15.7% as compared to last year due to the decrease in electricity supplied.

In line with the national vision of carbon neutrality by 2060, the Group will continue to assess, record and disclose its greenhouse gas emissions and other environmental information annually, to actively review the effectiveness of the current measures and to formulate its long-term targets and strategies on carbon reduction.

指標與目標

除管治架構搭建，開展風險與機遇識別外，本集團參考了TCFD的建議，識別了與監控環境、社會及氣候相關風險有關的指標，各營運點的溫室氣體排放主要來自靜止設備的燃料燃燒、在物理或化學工藝過程中所產生的工藝排放等。為此，本集團各營運點亦按營運需要制定了《溫室氣體排放管理規定》，對溫室氣體排放實施規範管理。在溫室氣體排放方面，本集團亦已依據ISO14064、《中國發電企業溫室氣體排放核算方法與報告指南(試行)》等標準開展溫室氣體排放核算工作，以明確相關績效的設立和追蹤。

本年度，各營運點共產生的溫室氣體排放為104,113公噸二氧化碳當量，較2024年溫室氣體排放總量下降41.89%，具體按類型劃分的溫室氣體排放量請見本報告「關鍵績效指標總覽」。各營運點溫室氣體密度為0.28公噸二氧化碳當量／萬元人民幣，因供電量下降，本年度的溫室氣體密度呈現下降趨勢，較去年下降約15.7%。

為配合國家爭取於二零六零年前實現碳中和願景，本集團將繼續評估、記錄每年披露溫室氣體排放及相關環境數據，積極檢討現行措施績效，並制定長遠減碳目標及策略。

EMPLOYEE CARE

員工關懷

The Group regards employees as the core resources of the Group's development. The Group respects its employees, adheres to labour standards as the bottom line, and provides employees with a healthy and safe working environment and comprehensive welfare and care measures. The Group attaches great importance to talents, makes greater efforts to nurture talents, provides diverse training opportunities, and develops a transparent promotion platform for employees. The Group has formulated personnel policies such as the "Employee Handbook" and "Human Resources Management Policy" and other measures to safeguard the Group's commitments to its employees in terms of employment, health and safety, training and development, and labour standards.

EMPLOYMENT SYSTEM

The Group regards the strict employment system as the basis for human resource management, strictly complies with the "Labour Law of the People's Republic of China", "Labour Contract Law of the People's Republic of China", "Law of the People's Republic of China on Employment Promotion", "Law of the People's Republic of China on the Protection of Rights and Interests of Women" and other labour protection laws and regulations. The Group has established a series of the employment management system, including the "Employee Handbook", "Human Resources Management Policy" and "Administrative Rules for Promotion", which clearly regulates the specific requirements and arrangements of the Group in the whole process of recruitment, remuneration, welfare, training, promotion, and dismissal, and demonstrates the Group's commitments to ensuring justice, equality, and anti-discrimination.

本集團以員工作為集團發展的核心資源。本集團尊重員工，以堅守勞動準則為底線，為員工提供健康安全的工作環境和完善的福利及關懷舉措；本集團重視人才，加大人才培養力度，提供多元化的培訓機會，為員工搭建透明的晉升平台。本集團已制定《員工手冊》及《人事資源管理制度》等人事政策，並結合多樣舉措，以保障本集團對員工在僱傭、健康與安全、培訓與發展及勞工準則層面的承諾。

僱傭制度

本集團以嚴格的僱傭制度為人力資源管理基礎，嚴格遵守《中華人民共和國勞動法》《中國人民共和國勞動合同法》《中華人民共和國就業促進法》及《中華人民共和國婦女權益保障法》等勞動者保護法律和法規，設立包括《員工手冊》《人力資源管理制度》或《崗位晉級管理辦法》等在內的一系列僱傭管理制度，明確規範本集團在招聘、薪酬、福利、培訓、晉升、解僱等全過程中的具體要求和安排，並體現本集團在保證平等、反歧視等方面的承諾。

EMPLOYEE CARE (CONTINUED)

員工關懷 (續)

Recruitment and promotion 招聘及晉升

- The Group recruits employees on the principle of “fair competition and merit-based employment”. The selection and recruitment process follows the principles of fairness, impartialness and transparency.
本集團按照「公平競爭、擇優錄用」的原則招聘員工，選聘和錄用過程均遵循公正、公平、透明的原則。
- The Group provides satisfying and challenging job opportunities, which help enhance the skills and experience of the employees so that they are given the promotion opportunities when job vacancies arise.
本集團為員工提供滿意及具挑戰性的工作機會，提高員工的技能及經驗，在出現職位空缺之時給予內部晉升機會。
- In order to improve the remuneration system of power plant employees, promote the enhancement of employees’ skills in their own positions, and develop and grow based on their own positions, the Group provides promotion opportunities for employees who meet the qualifications for promotion and evaluation in accordance with the relevant promotion system.
為完善電廠員工的薪酬體系，促進員工在本崗技能的提升，立足本職崗位發展和成長，本集團按照相關晉級制度，對滿足晉級考評資格的員工，提供晉級機會。

Remuneration, benefits, and rest periods 薪酬、福利及假期

- The Group offers competitive salaries to its employees based on their positions, skills and performance, establishes a salary structure based on fixed salary (including basic salary, post salary, skill salary) plus variable salary (including monthly performance bonus, year-end performance bonus, middle (night) shift allowance, overtime salary, other special bonuses), and makes contributions to the social insurance and housing provident fund in favour of our regular employees. The Group also provides employees with various paid vacations such as annual leave.
本集團根據崗位、技能及績效為員工提供具競爭力的薪酬，建立以固定工資(包括基本工資、崗位工資、技能工資)加浮動工資(包括月度績效獎金、年終績效獎金、中(夜)班津貼、加班工資、其他專項獎金等)為主體的薪酬結構，並為正式員工交納各項社會保險與住房公積金，亦為員工提供年休假等各種帶薪假期。
- In terms of welfare, based on the operating practices, the Operating Stations provide our employees with various welfare, such as meal allowance, high temperature subsidies, protection equipment, festival grants, free accommodation, body check and allowances.
在福利方面，各營運點結合營運實際，為員工提供包含餐貼、高溫費與勞動保護用品、過節費、免費集體宿舍、體檢、慰問金等在內的多種福利。

EMPLOYEE CARE (CONTINUED)

員工關懷 (續)

Equal opportunities and anti-discrimination 平等機會及反歧視

- The Group adopts the principle of equal treatment for all employees and applicants. The Group follows the regulations of the “Labour Law of the People’s Republic of China” and never discriminates against them based on their nationality, ethnicity, gender, religious beliefs, etc. during recruitment and promotion.
本集團對所有員工及應徵者採取一視同仁的原則。本集團遵循《中華人民共和國勞動法》的法規，在招聘及晉升過程中不會因為其國籍、民族、性別、宗教信仰等因素而給予不同的待遇。
- The Group attaches great importance to the protection of female employees, and provides additional protection for the interests of female employees in accordance with the “Special Provisions on Labour Protection for Female Employees” and other relevant rules.
本集團重視女員工保護，通過《女職工勞動保護特別規定》等相關制度對女職工的權益提供額外保護。

Employee feedback 員工意見回饋

- The Group attaches great importance to communication with employees, and advocates a candid communication and cooperation between individual and company, individual and individual. Based on operating practices, each Operating Station communicates with employees in various ways, such as through bulletin board, General Manager Mailbox, the trade union committee and staff satisfaction surveys, encourages and actively adopts employees’ reasonable suggestions. During the Year, the Group has conducted around 5 satisfaction surveys, covering various topics such as satisfactions with the job itself, job rewards, working atmosphere, factory environment, canteens at each Operating Station.
本集團重視與員工的溝通，提倡個人與公司、個人與個人之間坦誠的溝通與合作，在各營運點結合自身工作實際，採取公告欄、「總經理信箱」、工會委員會、員工滿意度調查等多種形式與員工進行溝通，鼓勵並積極採納員工的合理化建議。年內，本集團共開展滿意度調查5次，覆蓋對工作本身的滿意度、對工作回報的滿意度、對工作氛圍的滿意度、對廠區環境滿意度、對各營運點食堂滿意度等多個主題。

EMPLOYEE CARE (CONTINUED) 員工關懷 (續)

The Group understands that talent diversity is conducive to its sustainable business development. Employing staff from different backgrounds, such as people from different provinces, ethnic minorities, people with disabilities, or enhancing the status of women at work, can help enrich the talent pool and broaden business development. Currently, the Group is reviewing its employment system and policies, and considers expanding diversity elements of the current employment system in the future to clarify the Group's commitment to and direction on talent diversity.

During the Year, the Operating Stations employed a total of 188 regular employees.

The number of employees by category and the employee turnover rate are as follows:

本集團深明人才多元化有助業務持續發展。聘用不同背景的員工，例如不同省份、少數民族、殘障人士，或提升女性工作地位，均有助於豐富人才儲備及開拓業務發展。目前，本集團正檢討僱傭制度及政策，並考慮於未來在目前僱傭制度中加入更多多元化元素，以明確本集團對人才多元化的承諾及方向。

本年度，各營運點共聘用188名正式員工。

按類別劃分的員工人數及員工流失率如下：

	2025 2025年		2024 2024年	
Male/female ratio 男、女比例	145:43		110:29	
	Percentage		Percentage	
By age 按年齡劃分	%	Number	%	Number
30 and below 30歲及以下	48.9%	92	44.6%	124
31 to 40 31至40歲	21.8%	41	30.2%	84
41 to 50 41至50歲	20.7%	39	21.6%	60
51 and above 51及以上	8.5%	16	3.6%	10
Employee turnover rate 員工流失率	4%		18%	
Ratio of newly hired employees 員工新入職率	7%		16%	

EMPLOYEE CARE (CONTINUED)

員工關懷 (續)

LABOUR STANDARD

The Group strictly prohibits use of child labour and forced labour, and has clarified its position and commitment to protect the rights and interests of employees in the “Employee Handbook”, the “Human Resources Management Policy” and other systems.

The Group strictly follows laws and regulations such as “Law of the People’s Republic of China on the Protection of Minors” and “Provisions on the Prohibition of Using Child Labour”. During the recruitment process, the Group is required to verify the identity documents of the candidates to ensure that they meet the entry requirements. Any child worker who is found to be mistakenly employed will be immediately removed from the workplace and sent to a hospital for a medical examination. The Group will pay all wages to the child worker who will be escorted to a guardian where possible. The Group will also report the case to the local labour administration authority as required by the regulations.

The Group prohibits all kinds of forced labour practices. Any employees who are required to work overtime due to operational needs must obtain approval from the department head in accordance with the “Human Resources Management Policy”. At the same time, the Group will compensate the employee with extra overtime pays. Employees may also terminate the labour contract at any time in accordance with the provisions of the employment system. Each Operating Station also protects the basic rights and interests of employees such as wages, working hours and etc. by signing collective contracts based on actual operation and in accordance with the “Trade Union Law of the People’s Republic of China”, “Regulations of Zhejiang Province on Collective Contracts” and other laws, so as to build harmonious and stable labour relations.

勞工準則

本集團嚴禁聘用童工及強制勞動，並在《員工手冊》及《人力資源管理制度》等制度中列明本集團對維護勞工權益的立場及承諾。

本集團嚴格遵循《中華人民共和國未成年人保護法》及《禁止使用童工規定》等法律法規，在招聘的過程中，本集團需核實應聘者的身份證明，確保其符合入職要求。若發現誤聘童工，則應立即停止其工作並送往醫院進行身體檢查。本集團將向該童工發放所有薪資並在可行情況下安排專人護送其至監護人。本集團亦根據規定要求將個案呈報至當地勞工管理部門。

本集團禁止各種強制勞動行為。員工因營運需求需要加班時，須按照《人力資源管理制度》得到部門負責人批准。同時，本集團將向該名員工發放額外加班費作為補償。員工亦可按僱傭制度下的規定解除勞動合同。各營運點亦結合營運實際，依照《中華人民共和國工會法》及《浙江省集體合同條例》等法律規定，通過簽訂集體合同的方式，對員工如工資、工作時間等基本權益進行保護，以構建和諧穩定的勞動關係。

EMPLOYEE CARE (CONTINUED)

員工關懷 (續)

During the Year, the Group had no violations of laws and regulations related to child labour and forced labour.

EMPLOYEE CARE

Employee care is an important means for us to maintain sound employment relationships with our employees. We adopt a multi-faceted approach, focusing on the genuine needs of our employees and providing a variety of care services. For example, in order to improve employees' health, the Group also set up billiard tables, table tennis tables, basketball courts and other gymnastics facilities at each Operating Station. In order to reduce employees' work stress, strengthen staff morale and sense of belonging to the Group, the Group also regularly organises employee activities, including the quarterly birthday party, team building events, and Women's Day recognition and support etc. At the same time, we actively conduct employee satisfaction surveys covering areas such as work rewards, work atmosphere, workplace environment, and the canteens at each Operating Station, and make targeted improvements based on the survey results.

年內，本集團未發生與童工及強迫勞動有關的違法違規事件。

員工關懷

員工關懷是我們維繫和員工良好僱傭關係的重要方式。我們從多方面着手，聚焦員工真實需要，提供多種關懷服務。如，為增強員工身體健康，本集團在各營運點為員工配備檯球桌、乒乓球桌、籃球場等健身設施；為減輕員工工作壓力，加強員工士氣及對本集團的歸屬感，本集團亦會定期舉辦員工活動，包括每季度生日會、團建、婦女節慰問等。同時，我們積極開展員工滿意度調查，包括對工作回報、對工作氛圍、對廠區環境及對各營運點食堂的滿意度調查，並根據調查結果進行針對性提升。

EMPLOYEE CARE (CONTINUED) 員工關懷 (續)

Case: Anji Power Plant organised a team-building activity with the theme “Be a Stakeholder instead of a Bystander”

案例：安吉電廠舉辦「不做旁觀客，爭做主人翁」團建活動

In line with Wanxiang’s corporate culture and to foster an in-depth understanding of Lu Guanqiu’s spirit, the Company organised a team-building training activity under the theme “Be a Stakeholder instead of a Bystander” on 16 and 20 November 2025 at Siwu Ridge, Yiqiao Town, Xiaoshan District, Hangzhou. The activity comprised corporate culture briefing sessions and outdoor team-building exercises. Through this activity, communication and collaboration among team members were enhanced, team cohesion and effectiveness were strengthened, and employees were able to experience the strength and warmth of the team, thereby reinforcing their sense of identification with both the team and the Company.

2025年11月16日、20日，結合萬象企業文化，為深入學習魯冠球精神，公司在杭州市蕭山區義橋鎮寺塢嶺開展了以「不做旁觀客，爭做主人翁」為主題的團隊建設培訓活動。活動內容包括企業文化宣貫及團隊戶外拓展活動。通過開展本次活動，增強了團隊成員之間的溝通與協作，提高了團隊凝聚力和戰鬥力，讓員工在活動中感受到團隊的力量和溫暖，增強對團隊和公司的認同感。



Anji Power Plant organised a Women’s Day Recognition and Support activity in 2025
安吉電廠組織2025年婦女節慰問活動



Set up basketball courts, table tennis tables, etc. at each Operating Station to provide venues for employees to relax
各營運點設立籃球場、乒乓球桌等為員工休閒放鬆提供場地

EMPLOYEE CARE (CONTINUED)

員工關懷 (續)

DEVELOPMENT AND TRAINING

The Group regards talent pooling as an important systematic project. By building a comprehensive training system to consolidate and enhance various professional skills of power plant employees, it can fully mobilise the enthusiasm of employees to study and work, so that they can acquire the knowledge and skills required for the development of the enterprise, and thus grow with the enterprise. To this end, each Operating Station has established different training policies at the development and training aspects, including the “Management Measures for Skill Training”, the “Education and Training Management Regulations”, the “Implementation Rules for New Employee Induction Training Management” and etc. Each Operating Station provides induction training, expertise training, personnel and management training, etc. for different employees based on training requirements and the principle of “full participation, equal emphasis on skills and culture, practicing what you learned, combining assessment with rewards and punishments as well as long-term development” so as to enable employees to accommodate current and future requirements in their positions.

In terms of training channels, the Group has accelerated its expansion through a combination of online and offline to enable employees to obtain fuller and more convenient training resources.

發展及培訓

本集團將人才儲備作為一項重要的系統性工程，通過打造全方位的培訓系統鞏固提升電廠員工的各項專業技能，充分調動員工學習、工作的積極性，使員工獲得企業發展所需要的知識和技能，從而與企業共同成長。為此，各營運點在發展與培訓層面訂立不同培訓政策，包括：《技能培訓管理辦法》《教育培訓管理規定》和《新員工入職培訓管理實施細則》等。各營運點根據培訓規定為不同的員工提供入職培訓、技術培訓、人事及管理培訓等，以「全員參與、技能與文化並重、學以致用、考核與獎懲相結合、長期性」為原則，務求讓員工能夠應付目前崗位以及未來需要。

在培訓渠道方面，本集團加速拓展，以在線上線下相結合的形式，使員工可以得到更充分、更便捷的培訓資源。

Training type 培訓類別	Training themes 培訓主題
Induction training 入職培訓	Corporate culture, safety education, administrative and personnel management system, industry and development history 企業文化、安全教育、行政人事管理制度、產業及發展歷史
Production expertise training 生產專業技術培訓	Unit scheduling management, unit operation, combustion equipment maintenance, and equipment trouble shooting 機組調度管理、機組運行操作、燃機設備維修、設備故障處理
Safety and risk control training 安全及風控培訓	Safety work, emergency responses to power plant accidents, and risk management 安全工作、電廠事故應急、風險管理
External certificate training 外部取證培訓	Electrical engineer license 電氣工程師牌照
Human resources, finance and management training 人事、財務及管理培訓	Management personnel, financial business management, tax management, and the Civil Code 管理人員、財務業務管理、稅務管理、民法典

EMPLOYEE CARE (CONTINUED)

員工關懷 (續)

In order to ensure the constant skill improvement of employees, the Group stipulates the minimum training hours in light of the job requirements, and holds skill examinations twice a year to assess the employees' knowledge on trainings. The results of training and examinations will serve as an important basis for promotion and performance evaluation. Meanwhile, department heads will also conduct interviews with relevant employees to understand their training outcome and learning progress, and submit reports to the administration and human resources department in order to improve the quality of future training contents. In order to further improve the quality of training courses, the Operating Stations also conduct course satisfaction surveys to ensure that employees understand the training contents, and collect employees' feedback and suggestions on course contents and training instructors through a two-way scoring system.

In addition, the Group always pays attention to the matching of training needs with the actual needs of employees. Taking Jingxing Power Plant as an example, in order to make trainings more targeted and practical, Jingxing Power Plant specially carried out training surveys to collect valuable opinions and suggestions from employees, based on such feedbacks and combined with the actual operation situation, it has formulated the follow-up training programs.

A total of 296 employees were trained at the Operating Stations during the Year, that is, 100% of employees are trained. The average training hours of employees at the Operating Stations were 22.1 hours.

為確保員工技能持續提升，本集團結合崗位要求規定了最少培訓時長，並以每年舉辦兩次技能考試的方式，評估員工對培訓內容的認識。培訓及考試的結果將作為員工晉升及績效評估的重要依據。同時，部門負責人亦會對相關員工進行面談，了解員工受訓情況及學習進度，並將有關情況上報行政及人事部門，以提升未來培訓內容質素。為進一步提高培訓課程質量，各營運點還會開展課程滿意度調查，以雙向打分制的方式，在確保員工理解培訓內容的同時，收集員工對課程內容、培訓講師的回饋及建議。

此外，本集團時刻關注培訓需求與員工實際需求的匹配性。以京興電廠為例，為了使培訓更具針對性和實用性，京興電廠特開展了培訓調查，收集來自員工的寶貴的意見和建議，並以此回饋為基礎結合實際營運情況，擬定後續培訓計劃。

各營運點於本年度共有296名員工接受培訓，培訓覆蓋率達100%，各營運點的平均受訓員工時數為22.1小時。

EMPLOYEE CARE (CONTINUED)

員工關懷 (續)

COMPREHENSIVE SKILLS DEVELOPMENT

In order to improve the construction of talent echelon, the Group promotes learning among all employees to improve their own abilities and master more comprehensive skills in the process of learning, and prepare for further development, each Operating Station has carried out the training program of one post with multi-skills and all-around operator on duty training plans according to its actual situation to improve the skill level of employees and cultivate a team of talents with comprehensive skills. Anji Power Plant launched the all-around operator on duty training plan during the Year, where the production technology department organised employees to apply for cross-post learning, carried out various training plans for majors including combustion, thermal power, electrical, chemical water and others, and organised relevant training evaluations. During the Year, a total of 15 employees of the Group passed the training assessment on one post with multiskills. In terms of Bluesky Power Plant, two employees passed the assessment for special equipment safety officer certificate, three employees passed the boiler operator certificate assessment, three employees passed the water treatment certificate assessment, six employees passed the high-voltage electrician certificate assessment, and one employee passed the pressure gauge and transmitter calibrator certificate assessment; in terms of Jingxing Power Plant, one employee passed the fire facility operator certificate assessment, four employees passed the electrician certificate assessment, six employees passed the boiler operator certificate assessment, and three employees passed the pressure vessel certificate assessment; in terms of Anji Power Plant, four employees passed the industrial boiler operator certificate assessment, eight employees passed the power station boiler operator certificate assessment, one employee passed the welding and thermal cutting operation certificate assessment, one employee passed the metrology certificate assessment, three employees passed the low-voltage electrician certificate assessment, and five employees passed the high-voltage electrician certificate assessment.

全面技能培養

為完善人才梯隊建設，本集團倡導全員學習，在學習過程中提升自身能力，掌握更全面技能。為進一步發展做好準備，各營運點结合自身實際開展一崗多能培養計劃、全能值班員培訓計劃等，以提高員工的技能水平，培養一支技能全面的人才隊伍。安吉電廠於年內開展全能值班員培訓計劃，由生產技術部組織員工報備跨崗學習專業，開展各專業培訓計劃，含燃機、熱動、電氣、化水等專業並組織相關培訓測評。本年度，本集團共有15名員工通過一崗多能培訓考核。藍天電廠有2名員工通過特種設備安全員證考核，3名員工通過司爐證考核，3名員工通過水處理證考核，6名員工通過高壓電工證考核，1名員工通過壓力錶和變送校準員證考核；京興電廠有1名員工通過消防設施操作員證，4名員工通過電工證，6名員工通過司爐證考核，3名員工通過壓力容器證考核；安吉電廠有4名員工通過工業鍋爐司爐證考核，8名員工通過電站鍋爐司爐證考核，1名員工通過焊接與熱切割作業證考核，1名員工通過計量證考核，3名員工通過低壓電工證考核，5名員工通過高壓電工證考核。

EMPLOYEE CARE (CONTINUED)

員工關懷 (續)

The Group also actively encourages employees to obtain external skills or qualifications (such as certified safety engineer, electrical engineer, etc.). During the Year, 14 employees in total at the Operating Stations obtained the third-level electrician recognition, senior economist recognition and other relevant external professional and technical titles or skill level certifications.

HEALTH AND SAFETY

Production safety is the greatest responsibility of an enterprise. The Group always regards the maintenance of health and safety as a top priority, continuously deepens a system of responsibility for the safety production for all employees, strengthens the management and control of the safety production process, implements safety inspection and supervision, and continuously improves the level of safety management. The Group complies with the “Production Safety Law of the People’s Republic of China”, “Law of the People’s Republic of China on the Prevention and Control of Occupational Diseases”, “Fire Control Law of the People’s Republic of China” and other regulations, obligates to implement the policy where “safety comes first, and precautions serve as priorities with comprehensive treatment measures” in electricity production, with different employee safety policies introduced to each Operating Station, including “Safety Management Standards”, “Production Safety Management Standards”, “Administrative Standards for Safety Production Responsibility System”, “Administrative Standards for Occupational Hygiene” or “Work Injury and Accident Management Standards” to introduce measures safeguarding the health and safety of the employees.

本集團亦積極鼓勵員工獲得外部技能或資質認定 (如註冊安全工程師、電氣工程師等)。年內，各營運點共有14名員工獲得三級電工技能等級認定、高級經濟師等相關外部相關專業技術職稱或技能等級認定。

健康與安全

生產安全是企業最大的責任，本集團始終把維護健康與安全作為首要任務，持續深化全員安全生產責任制，加強安全生產過程管控，落實安全檢查監管，不斷提升安全管理水平。本集團遵循《中華人民共和國安全生產法》《中華人民共和國職業病防治法》《中華人民共和國消防法》等法規，堅持貫徹電力生產「安全第一，預防為主，綜合治理」的方針，並於各營運點制定如《安全管理標準》《安全生產工作管理標準》《安全生產責任制管理標準》《職業衛生管理標準》或《工傷事故管理標準》等不同的員工安全標準，落實對員工健康與安全的措施。

EMPLOYEE CARE (CONTINUED)

員工關懷 (續)

SAFETY MANAGEMENT

In order to effectively implement various health and safety measures, the Group has a production safety committee which is responsible for production safety at the Group level, including the implementation of the production safety responsibility system, and the formulation of budget plans and safety targets. At the same time, the Group also empowers the production safety supervisors of each Operating Station to implement and supervise the relevant safety management, which mainly includes the following tasks:

安全管理

為有效落實各項健康安全措施，本集團設有安全生產委員會，負責集團層面的安全生產工作，包括落實安全生產責任制、制定預算計劃及安全目標。同時，本集團亦授權各營運點的安全生產主管負責執行及監督相關安全管理工作，主要包括：

Safety management at Operating Station level

營運點層面的安全管理工作

- Develop a production safety system and risk prevention and control system to identify production safety hazards and potential risks;
制定安全生產制度及風險防控體系，識別安全生產隱患及潛在風險；
 - Develop safe production standards and safe production processes based on the identified potential hazards and risks;
根據已識別的隱患及風險制定安全生產標準以及安全生產流程；
 - Conduct regular safety inspections to ensure that production processes comply with safety standards;
進行定期安全檢查，確保生產過程符合安全標準；
 - Conduct safety hazard investigation and management assessments, and develop corrective measures and countermeasures;
進行安全隱患排查治理評估，制定糾正及應對措施；
- Enhance employees' workplace safety awareness by holding daily safety meetings and organising various safety training and education events;
- 透過日常安全例會、各項安全培訓宣傳教育，加強員工對安全生產的意識；
 - Develop contingency plans for safety incidents and conduct regular emergency drills; and
制定安全事故應急預案，定期進行應急演練；及
 - Investigate and develop follow-up measures following occurrence of safety incidents.
在安全事故發生後進行調查及制定跟進措施。

EMPLOYEE CARE (CONTINUED)

員工關懷 (續)

In order to further optimise its safety management, the Operating Stations, such as Deneng Power Plant, Quzhou Power Plant and Anji Power Plant, have formulated a three-year plan for the special rectification of safety production. The Group has carried out the special rectification activities of power safety production to further implement the main responsibility for safe production comprehensively and review our weaknesses in power safety comprehensively. The Group standardised and strengthened the management of hazardous chemicals, construction, hazardous operations, special equipment, network and information, power equipment and facility operations, and work environment safety, conducted in-depth investigation and rectification of significant safety risks and potential accidents, improved the long-term mechanism of self-inspection and self-correction of power safety production risks and outstanding issues, prevented all types of accidents, guaranteed the long term safety of production at each Operating Station, and ensured the continuous and stable situation of power production safety.

Case: Anji Power Plant Carried Out Various Hidden Danger Investigations and Rectifications **案例：安吉電廠開展各類隱患排查及整改**

In 2025, in light of production conditions and peak electricity consumption during holidays, Anji Power Plant carried out 11 safety inspections and 4 quarterly comprehensive safety production inspections, assigned rectification responsible persons, and identified a total of 262 rectification items. Based on the inspection results, Anji Power Plant conducted special rectification and completed a total of 260 rectification items. 2025年，安吉電廠結合生產情況和節假日用電高峰情況，開展了11次安全檢查和4次季度安全生產綜合檢查，落實整改責任人，共發現整改項262項。根據檢查結果，安吉電廠進行專項整改，共完成260項整改內容。

In order to further create a safety culture atmosphere in which all employees attach importance to safety, pay attention to safety, and ensure safety, and comprehensively improve the safety awareness of all employees, each power plant has formulated “safety production month” activities in line with its actual situation, such as hanging theme slogans, holding mobilization meetings, watching warning education videos, watching warning education videos, carrying out safety knowledge training, emergency drills, safety knowledge competitions, rescuer certification training, etc.

為進一步優化安全管理工作，各營運點如德能電廠、衢州電廠及安吉電廠等均已制定安全生產專項整治三年行動工作計劃，通過開展電力安全生產專項整治工作，進一步全面落实安全生產主體責任，全面梳理電力安全生產短板弱項，規範和強化危險化學品、建設施工、危險作業、特種設備管理、網絡與信息、電力設備設施運行和作業現場安全等管理工作，深入排查整治重大安全風險和事故隱患，健全電力安全生產風險隱患和突出問題自查自糾長效機制，堅決杜絕各類事故發生，保障各營運點安全生產長治久安，確保電力安全生產形勢持續穩定。

為進一步營造全員重視安全、關注安全、保障安全的安全文化氛圍，全面提高全員安全素質，各電廠均制定了符合公司實際的「安全生產月」活動，比如懸掛主題標語、召開動員大會、觀看警示教育片、開展安全知識培訓、應急演練、安全知識競賽、救護員取證培訓等。

EMPLOYEE CARE (CONTINUED) 員工關懷 (續)

Case: Anji Power Plant Conducted Fire Safety Month Themed Activities

案例：安吉電廠開展消防月活動

At 8:30 a.m. on November 14, we organized a special training session for all employees of the company on fire safety knowledge, evacuation knowledge and the study of typical fire accident cases. We popularized and explained the causes of fires, the fire protection work of entities, the fire accidents caused by gas leakage that are prone to occur in households, and the preventive measures for fires caused by household appliances (small space heater, electric blankets). At the same time, we explained the common sense of emergency evacuation and reminded the employees of the safety precautions for accommodation when travelling. In addition, we organized all staff to explain the usage and practical fire-fighting operations of fire extinguishers and positive pressure fire breathing apparatus. Through practical fire extinguishing, employees can master proficiently the usage of fire extinguishers and the correct posture and position when extinguishing fires.

11月14日上午8時30分，我們組織公司全員進行了消防知識及逃生知識以及典型消防事故案例學習的專項培訓。我們圍繞發生火災的原因、單位的消防工作、家庭易出現的煤氣洩漏造成的火災事故及家用電器引起火災（小太陽、電熱毯）的防範措施進行普及講解。同時進行應急逃生常識的講解並提醒員工外出住宿入住的安全注意事項。此外，我們組織全員講解滅火器、正壓式消防呼吸器的使用方法和實戰滅火操作。通過實戰滅火，員工能熟練地掌握滅火器的使用方法及滅火時的正確姿勢與站位。

On November 26, we carried out an emergency drill for the “Lubricating Oil Fire Accident of Turbine Unit #2”. This drill was based on the actual situation of the equipment at Anji Power Plant, and all employees of the company participated.

11月26日我們開展了「#2機組汽輪機潤滑油着火事故」應急演練，此次演練是根據安吉電廠設備的實際情況進行出題，公司全員參與。

Through a series of fire safety training sessions and drills, employees’ awareness of fire safety has been significantly enhanced, and they have mastered the skills for handling fire accidents and escaping. Meanwhile, we have also identified the existing deficiencies. In the future, we will carry out targeted and continuous fire safety knowledge training, and utilize various channels to ensure that all employees can acquire fire safety knowledge and the ability to evacuate and handle emergencies. This will promote the fire safety awareness and fire rescue capabilities of all employees to a new level, ensuring the safety and stability of production.

通過系列消防安全培訓與演練，員工消防安全意識大幅提升，並掌握消防事故的處理和逃生技巧。同時，我們也從中發現了存在的不足之處，未來將針對性且持續開展消防安全知識培訓，通過多種渠道使員工都能掌握消防知識及突發事件的逃生及處置應變能力。促使全體員工消防意識和消防搶救能力提高到一個新的水平，確保生產安全穩定。

EMPLOYEE CARE (CONTINUED)

員工關懷 (續)



Fire Safety Month Themed Activities at Anji Power Plant
安吉電廠消防月活動



Certification Training for Emergency Rescue Personnel at Anji Power Plant
安吉電廠應急救護員取證培訓

EMPLOYEE CARE (CONTINUED)

員工關懷 (續)

Emergency drills

In order to enhance the safety awareness of all employees and ensure effective response to emergencies which may cause safety risks, the Operating Stations also formulated the emergency plans, such as “Emergency Plan for Fire Safety Incidents”, “Emergency Plan for Emergency Environment Incidents”, “Emergency Plan for Production Safety”, “Emergency Plan for Typhoons, Floods and Strong Convection” and “Emergency Plan for Power Failure”. Specialized requirements have also been refined, for example, the Anji Power Plant has formulated the “Twenty-five Key Requirements for the Prevention of Electricity Production Accidents” and so on. The Operating Stations carried out drills and provided the employees with relevant safety training on a regular basis. During the Year, the Group has carried out a total of 29 activities, such as emergency drills, Safety Awareness Month and Fire Drill Day, which include several topics such as typhoon and flood prevention, natural gas equipment leakage emergency drills, fire emergency evacuation, and power failure emergency drills, with 911 participants.

應急演練

為提升全員安全意識，並有效應對突發事件可能造成的安全風險，各營運點根據營運實踐亦制定有《消防安全事故應急預案》《突發環境事件應急預案》《生產安全事故應急預案》《防颱、防汛、防強對流天氣應急預案》或《全廠停電事故應急預案》等應急預案；專項方面的規定也進行細化，例如，安吉電廠制定了《防止電力生產事故的二十五項重點要求》等。各營運點定期組織員工進行演練及相應安全培訓。本年度，本集團共開展如應急演練、安全生產月、消防日等活動29次，涉及防颱防汛、天然氣設備洩漏應急演練、火災應急逃生、停電事故應急演練等諸多主題，參與人次達911人次。



Typhoon and Flood Emergency Drill at Anji Power Plant
安吉電廠防颱防汛應急演練

EMPLOYEE CARE (CONTINUED)

員工關懷 (續)



Comprehensive Emergency Drill for Booster Shutdown and Personnel Injury at Anji Power Plant
 安吉電廠增壓機停運、人員受傷綜合應急演練



Emergency Drill for Abnormal Incidents in the Industrial Water System at Anji Power Plant
 安吉電廠工業水系統異常事故應急演練

EMPLOYEE CARE (CONTINUED) 員工關懷 (續)



Emergency Drill for a Fire Caused by Oil Leakage onto the 4-Meter Level from
a Ruptured Outlet Pipe of the Turbine Main Oil Pump at Anji Power Plant
安吉電廠汽機主油泵出口管道破裂漏油至4米層着火事故應急演練

EMPLOYEE CARE (CONTINUED)

員工關懷 (續)

Occupational disease protection

In terms of occupational disease protection, the Group strictly complies with the “Labour Law of the People’s Republic of China”, “Law of the People’s Republic of China on the Prevention and Control of Occupational Diseases”, the “Management Rules for Labour Protection Products of Employers”, the “Regulations on Labour Protection in Workplaces Where Toxic Substances Are Used”, “Measures for the Supervision of Occupational Health Surveillance” and other relevant laws and regulations. Based on the operating practices, the Operating Stations have established various management systems, such as the “Compilation of Occupational Health and Safety Management”, “Administrative Standards for Occupational Hygiene” and “Work Injury and Accident Management Standards”, covering all aspects of occupational health and safety such as occupational disease protection facilities, management of protective equipment, publicity, education and training on occupational hazards prevention and control, occupational health surveillance and occupational diseases management. Jingxing Power Plant has also established the occupational disease prevention leadership team and the occupational health management team to effectively safeguard employees’ occupational safety. Each Operating Station is committed to improving working conditions continuously, and creating a safe, healthy and comfortable working environment for employees.

In addition, each Operating Station has created occupational health profile for its employees according to its operational needs, and has respectively arranged health checks and occupational disease hazards tests for both new and existing employees to ensure that they are healthy prior to and during their employment. Certain Operating Stations, such as Deneng Power Plant, Bluesky Power Plant and Anji Power Plant, have also arranged for third-party testing organisations to conduct occupational disease hazard tests at their plants to reduce the risk of occupational disease hazards to a manageable level. Each Operating Station also provides employees with occupational disease protective equipment and personal protective equipment to ensure their safety at work.

During the Year, no safety accidents resulting in work-related employee deaths occurred at any Operating Stations. Over the past three years, no work-related fatalities occurred at the Group. During the reporting period, there were three work-related injuries resulting in 179 lost workdays.

職業病防護

在職業病防護方面，本集團嚴格遵守《中華人民共和國勞動法》《中華人民共和國職業病防治法》《用人單位勞動防護用品管理規範》《使用有毒有害作業場所勞動保護條例》及《職業健康監護管理辦法》等相關法律法規，基於營運管理實踐於各營運點制定了《職業健康安全管理制度彙編》《職業衛生管理標準》或《工傷事故管理標準》等不同管理制度，將職業病防護設施、防護用品管理、職業病危害防治宣傳教育培訓、職業健康監護與職業病管理等在全方面的職業健康安全內容囊括其中，京興電廠還成立職業病防治領導機構及職業衛生管理機構，切實保障員工職業安全。各營運點均致力於持續改善工作條件，努力為職工打造一個安全、健康、舒適的工作環境。

此外，各營運點亦按營運需要為員工建立職業健康檔案，並為新入職員工及現職員工分別安排入職健康檢查及職業病危害檢測，確保他們在入職前及在職期間的健康。部分營運點如德能電廠、藍天電廠、安吉電廠亦安排第三方檢測機構對電廠進行職業病危害因素檢測，將職業病危害風險減至可控水平。各營運點亦會為員工提供職業病防護裝備及個人防護用品，保障員工作業時安全。

本年度，各營運點未發生任何安全事故導致員工因工死亡事件。過去三年，本集團亦未發生工亡事件。報告期內，本集團因工受傷3人，因工傷損失工作日179天。

OPERATION RESPONSIBILITY

營運責任

Based on the provision of responsible and stable power services, the Group adheres to the principle of operating with integrity and abide by business ethics, and requires every employee to know and understand its business code of conduct by setting out the code of conduct for employees in the “Employee Handbook”, and actively cooperates with suppliers and other stakeholders on the basis of enhancing understanding and mutual trust. Through continuous compliance construction and development efforts, the Group continues to win the respect and recognition of all stakeholders while bearing its operational responsibilities.

ANTI-CORRUPTION

Improper behaviors in business activities, such as corruption, bribery or under the premise of sacrificing the interests of the enterprise, violating the principle of fair trade and damaging the reputation of the enterprise, will seriously disrupt the normal management order of the Group and hinder the sustainable and healthy development of the enterprise. Therefore, the Group strictly abides by relevant laws and regulations such as “Anti-unfair Competition Law of the People’s Republic of China”, “Anti-money Laundering Law of the People’s Republic of China” and “Contract Law of the People’s Republic of China”. By taking “integrity, honesty, fairness, impartiality, and ethical business practices” as one of its core values, the Group has adopted a zero-tolerance attitude towards bribery and corruption, resolutely opposes and expressly prohibits corruption, establishing a clean and honest cultural atmosphere within the Group.

本集團以提供負責任及穩定電力服務為基礎，堅持誠信經營並恪守商業道德，以在《員工手冊》中列明員工職務行為準則的方式要求每一位員工知悉並了解我們的商業行為準則，並與供應商等利益相關方以增強理解互信為基礎開展積極合作，通過持續的合規建設與努力發展，在肩負營運責任的同時，不斷贏得各利益相關方的尊重與認可。

反貪污

商業活動中的不正當行為如貪污、受賄、行賄，或以犧牲企業利益為前提，違反公平交易原則、損害企業的聲譽，都會嚴重擾亂本集團的正常管理秩序，阻礙企業的持續健康發展。因此，本集團嚴格遵守《中華人民共和國反不正當競爭法》《中華人民共和國反洗錢法》及《中華人民共和國合同法》等有關法律法規，將「廉潔守正、誠實正直、公平公正、不偏不倚及合符道德的商業行為」作為核心價值之一，對賄賂和貪污採取零容忍態度，堅決反對並明令禁止貪污行為，在本集團內部營造風清氣正、廉潔誠信的文化氛圍。

OPERATION RESPONSIBILITY (CONTINUED)

營運責任 (續)

- **Policy guarantee:** The Group attaches great importance to the construction of the anti-corruption system, and has formulated a special “Anti-corruption Policy”, which strictly stipulates the forms of bribery and corruption, restrictions on gifts and entertainment, “red flags” of possible corrupt behavior, protection and confidentiality policy for whistleblowers consequences of false reporting, responsibility for reporting violations of this policy, incident investigation, anti-corruption training and etc. The Audit Committee is also responsible for monitoring and regularly reviewing this policy. At the same time, in order to ensure the availability of policies, relevant policies have been published on the Company’s website, which can be viewed by any stakeholder, ensuring the openness, transparency and availability of policies.
- **Employee management:** In terms of employee management, the Group has set forth the code of conduct for employees in the “Employee Handbook”, which clarifies that employees shall not solicit or accept benefits from business related units in any name or form; a zero-tolerance attitude is adopted for employees who involved in corruption, bribery or fraud, regardless of whether it causes losses to the Group; a letter of commitment that includes agreements on resolutely resisting commercial bribery and others shall also be signed by employees at or above the departmental manager level and employees in key positions.
- **政策保障：**本集團高度注重對反貪制度的建設，已制定專項《反貪污政策》，對賄賂和貪污的形式、禮品和款待的限制、可能存在貪污行為的「危險信號」、對舉報人的保障及保密政策、虛假報告的後果、舉報違反本政策行為的責任、事件調查、反貪培訓等內容均進行嚴格規定，審核委員會還需負責監察及定期檢討此政策。同時，為確保政策可得性，相關政策已發佈於本公司網站，任何利益相關方均可查看，確保了政策的公開、透明、可獲得。
- **員工管理：**在員工管理方面，本集團在《員工手冊》中闡述了員工職務行為準則，明確員工不得以任何名義或形式索取或者收受業務關聯單位的利益；對員工涉及貪污、受賄或作假欺騙的行為，不論是否對集團造成損失，均採取零容忍的態度；部門經理級以上的員工及關鍵崗位員工，還需簽署包含堅決抵制商業賄賂等約定的任職承諾書。

OPERATION RESPONSIBILITY (CONTINUED) 營運責任 (續)

- **Cultivating an atmosphere of integrity:** The Group attaches great importance to the cultivation of an integrity culture atmosphere, and stipulates in the “Anti-corruption Policy” that the human resources department is responsible for organising the anti-corruption training for employees, and shall arrange at least one integrity training session for employees annually. At the same time, employees at managerial level and employees in key positions are also required to receive special anti-corruption trainings led by legal counsel to reinforce their awareness. For directors, the Group takes anticorruption as an important part of the annual director training every year, with training and education taken as means to consolidate the foundation of anti-corruption. During the Year, the total duration of anti-corruption trainings for employees at the Operating Stations of the Group was 123 hours.
- **Supplier management:** The Group adheres to the principle of maintaining an honest and cooperative relationship with suppliers. In addition to the requirements of “honesty and self-discipline, acting impartially, and not seeking personal gain” for procurement personnel in the internal procurement system, each Operating Station requires suppliers to abide by the Group’s integrity and compliance requirements by signing an “Integrity Construction Guarantee” when bidding.
- **培養廉潔氛圍：**本集團重視廉潔文化氛圍的培養，並於《反貪污政策》中規定，人力資源部需負責員工的反貪培訓，並每年為員工安排至少一次誠信培訓。同時，對經理級員工及重點崗位員工，另需接受由法律顧問牽頭開展的專項反貪污培訓，以強化認識。針對董事，本集團每年將反貪污作為年度董事培訓的重要內容進行開展，以培訓教育為手段，夯實反腐敗根基。本年度，本集團各營運點員工反貪污培訓受訓時長合共123小時。
- **供應商管理：**本集團堅持與供應商維持廉潔合作關係。除在內部採購制度中對採購人員提出「廉潔自律，秉公辦事，不謀私利」的要求外，各營運點在招標時以簽署《廉政建設保證書》的形式，要求供應商遵守本集團的廉潔合規要求。

OPERATION RESPONSIBILITY (CONTINUED)

營運責任 (續)

The Group encourages its employees to objectively determine whether business activities are in line with the business ethics and industry practices as a third party. Anyone who becomes aware of any information indicating that a violation of the “Anti-corruption Policy” has occurred or is about to occur must report it in a timely manner to the chairman of the Audit Committee via the whistleblowing policy. The Audit Committee is responsible to report to the Board for material incidents relating to breaches of the “Anti-corruption Policy”. At the same time, by integrating actual operation, each Operating Station has a corruption complaint mailbox and hotline for employees to tip-off any commercial bribery and other misconducts. The Group prohibits retaliatory action against any person who raises a concern in good faith. If the employee is raising genuine and appropriate concerns under the “Anti-corruption Policy”, he or she is assured of fair treatment, including protection against unfair dismissal, victimisation or unwarranted disciplinary action, even if the concerns turn out to be unsubstantiated. No employees will suffer demotion, penalty, or other adverse consequences for refusing to engage in or permit a bribery offence or for raising concerns or for reporting possible wrongdoing, even if it may result in losing business or otherwise suffering a disadvantage. The Group keeps the identity of the whistle-blower confidential.

During the Year, the Group did not receive any reports or complaints in this regard and the Group has not found any corruption-related violations of laws and regulations.

PRODUCT RESPONSIBILITY

As a peaking power plant, the Group is committed to fulfilling the responsibility of stabilizing electricity supply and providing quality electricity supply services during peak hours. To this end, the Group has established the “Safety Management Standards” and relevant risk assessment and control standards to ensure that the electricity production process meets safety standards.

本集團鼓勵員工以第三者客觀身份判斷商業活動是否符合商業道德及行業慣例。任何人如獲悉任何表明已發生或即將發生違反《反貪污政策》的行為的信息，須實時通過舉報政策向審核委員會主任委員報告，審核委員會負責將涉及違反《反貪污政策》的重大事件向董事會上報。同時，各營運點亦結合營運實際，設有廉政舉報信箱及舉報熱線，供員工舉報任何商業賄賂等不當行為。本集團禁止對任何善意提出疑慮的人採取報復行動。如該員工根據《反貪污政策》提出真實且適當的疑慮，他或她將得到公平對待，包括不會受到不公平解僱、傷害或不當的紀律處分，即使有關疑慮最終無法證實。任何員工都不會因拒絕參與或允許賄賂犯罪、提出疑慮或報告可能的不當行為而遭降級、處罰或其他不利後果，即使這可能導致業務的喪失或遭受其他不利影響。對舉報人的身份，本集團嚴格進行保密。

年內，本集團未收到與此相關的舉報及投訴且本集團並未發現任何與貪污相關的違法違規事件。

產品責任

作為調峰電廠，本集團致力承擔穩定供電的責任，在用電高峰時段提供優質的供電服務。為此，本集團已制定《安全管理標準》及相關風險評價、控制標準，確保電力生產過程符合安全標準。

OPERATION RESPONSIBILITY (CONTINUED) 營運責任 (續)

In order to ensure the safe, high-quality and economical operation of the power system in East China, we have implemented the power production policy of “safety first, prevention prioritised” in accordance with the “Regulation on the Administration of Power Grid Scheduling (Revised 2011)”, “Detailed Rules on the Administration of Grid-connected Operation of Power Plants in East China (for Trial Implementation)” and “Provisions on the Administration of Grid-connected Operation of Power Plants” (Dian Jian Shi Chang [2006] No. 42) and other relevant regulations, established and improved relay protection and safety automatic devices, dispatching automation, power communication and other operation and maintenance safety management systems involved in the safe and stable operation of the power grid, maintained the safe and stable operation of the power system in East China, and followed the command of the relevant power dispatching and trading agencies to quickly and accurately execute dispatching instructions.

In order to ensure the stability of power supply during periods of high-power demand such as major national events or holidays, the Group has formulated a special power protection plan to implement a series of safety measures and contingency plans to protect power, and actively reported the preparation of various works to the power regulatory agencies and power dispatching and trading agencies before entering the power protection stage to ensure the stability of power supply in times of high-power demand. The specific power protection measures are as follows:

- Preparing emergency start-up plans for units and improving power protection plans;
- Strengthening daily professional skills training and personnel safety awareness, and effectively combining safety education and skills training;

為保障華東電力系統安全、優質、經濟運行，我們遵照《電網調度管理條例（2011修訂）》《華東區域發電廠並網運行管理實施細則（試行）》及《發電廠並網運行管理規定》（電監市場[2006]42號）等有關規定的要求，貫徹「安全第一、預防為主」的電力生產方針，建立健全涉及電網安全穩定運行的繼電保護和安全自動裝置、調度自動化、電力通信等運行和檢修安全管理制度，維護華東電力系統安全穩定運行，並配合相應電力調度交易機構的指揮，迅速、準確執行調度指令。

為確保在國家重大活動或節假日等高電力需求的時期維持供電穩定性，本集團制定專項保電方案，落實一系列保障電力安全措施及應急方案，並在進入保電階段前積極向電力監管機構及電力調度交易機構報告各項工作準備情況，確保在高電力需求時維持供電穩定，具體保電措施如下：

- 編製機組應急啟動預案，完善保電方案；
- 加強日常專業技能培訓，強化人員安全意識，將安全教育和技能培訓有效結合；

OPERATION RESPONSIBILITY (CONTINUED)

營運責任 (續)

- Strengthening professional equipment management on the basis of the original equipment regular maintenance plan, and earnestly supervising the implementation of regular equipment maintenance work to ensure that the out-of-service equipment can meet the peak scheduling demand at any time;
- Organising and carrying out emergency plan investigation, reviewing the rectification of safety hazards, and implementing the hidden danger investigation and management and closed-loop management system; checking the allocation of emergency supplies and professional spare parts to ensure the availability of spare parts, ensure safe operation and controllable risks in case of emergencies to avoid delays in processing;
- Maintaining communication to ensure that the provincial calls are answered or delivered at all times and the power plant command system is unimpeded;
- Strictly implementing the primary responsibility for production safety as well as relevant regulations and standards on safety production, and strengthening various safety management measures on the entering plants (sites) for construction by maintenance, technical transformation and other outsourced construction units, strengthening management efforts especially in safety education and training, special operation supervision, construction team management, contracting qualifications and site access, etc., and resolutely and effectively preventing construction safety accidents; and
- 在原有的設備定期保養計劃基礎上強化專業設備管理、認真督促設備的定期保養工作的執行，確保停運的設備隨時滿足調度頂峰需求；
- 組織開展應急預案排查，對安全隱患整改情況進行複查，落實隱患排查治理和閉環管理制度。盤點應急物資和專業備品備件的配置，保證突發事件時有備品可用，安全運行，風險可控，避免延誤處理；
- 保持溝通，確保省調電話隨時有人接聽或傳達、電廠指揮系統暢通無阻；
- 嚴格落實安全生產主體責任，嚴格執行有關安全生產法規和規範標準，加強檢修、技改等外包施工單位進廠(場)施工的各項安全管理措施，特別要在安全教育培訓、特種作業監督、施工班組管理、承包資質及現場准入等方面加大管理力度，堅決有效防範施工安全事故；及

OPERATION RESPONSIBILITY (CONTINUED) 營運責任 (續)

- Strengthening guards on duty. Unidentified persons are not allowed to enter the plant without permission.

Meanwhile, in order to reduce production safety risks, each Operating Station has established leading taskforce for the construction of safety risk management and control system based on operational practices, which is headed by the general manager of each Operating Station, with relevant personnel from the safety management department and technical department as team members. The team is mainly responsible for hazard identification, risk assessment and risk control planning, as well as the implementation of various risk control measures. If a potential hazard with higher risk is identified, the Group will formulate response and mitigation measures to reduce its negative impact on the production process. During the Year, the Group conducted a total of 47 major safety inspections, identified 738 risks of various types, with a rectification rate of 99.73%, among which the fire control system of the turbine room and the CEMS SO₂ system at Anji Power Plant are expected to be rectified in 2026. During the Year, there were no incidents affecting the safety and stability of power supply at the Operating Stations.

- 加強門衛值守，未經許可，不明身份人員一律不得入廠。

同時，為減低生產安全風險，各營運點結合營運實踐，設有安全風險管控體系建設領導小組，並由各營運點總經理擔當組長，而安全管理部門、技術部門等相關人員擔任小組成員。小組主要負責危害辨識、風險評估和風險控制策劃，以及各項風險控制措施的落實。如識別到風險較高的潛在危害，本集團將制定應對及減緩措施，減輕其對生產過程的負面影響。年內，本集團共開展安全大檢查47次，辨識各類風險738項，整改率達99.73%，其中安吉電廠燃機間消防控制系統和CEMS SO₂系統預計在2026年完成整改。本年度，各營運點並無發生與影響供電安全性與供電穩定性相關的事件。

OPERATION RESPONSIBILITY (CONTINUED)

營運責任 (續)

In addition, with the gradual strengthening of national requirements for power network and information security and in order to meet the requirements of power grid management, the Group has strictly implemented the primary responsibility and security protection requirements for network security, and earnestly studied and implemented the relevant requirements of the “Cybersecurity Law of the People’s Republic of China”, “Provisions on Safeguarding the Security of Power Monitoring Systems” and “The Grid Operation Code” by fully implementing the network security management system in combination with operational practices, carrying out in-depth investigation and management of network security risks, timely revising and improving network security emergency plans, organising and carrying out emergency drills with incident handling as the core to effectively improve the network security emergency handling capability, and assigning designated personnel to be responsible for the daily monitoring and inspection of the power dispatching data network, power dispatching automation system and power plant computer monitoring system. Meanwhile, each Operating Station has also gradually upgraded the corresponding dispatching and communication devices according to the new security requirements, so as to meet the safe operation requirements for regional protection information upload and prevent network security problems.

Due to the business nature, the Group is not involved in product labelling, product recall, advertising and customer privacy matters, and therefore has no relevant policies and measures in place. No customer complaints were received from the Operating Stations during the Year.

另外，隨着國家對電力網絡與信息安全工作要求的逐步加強，為符合電網管理要求，本集團嚴格落實網絡安全主體責任和安全防護要求，認真學習貫徹《中華人民共和國網絡安全法》《電力監控系統安全防護規定》及《電網運行準則》等相關要求，結合營運實踐全面落實網絡安全管理制度，深入開展網絡安全隱患排查治理工作，及時修訂和完善網絡安全應急預案，組織開展以事件處置為核心的應急演練，切實提高網絡安全應急處置能力，並安排專人負責電力調度數據網絡、電力調度自動化系統和發電廠計算機監控系統的日常監測檢查。與此同時，各營運點亦已逐步根據新的安防要求進行了相應的調度通信裝置升級，以滿足地區保護信息上傳安全運行要求，防止網絡安全方面的問題。

由於業務性質關係，本集團並不涉及產品卷標、產品回收、廣告及客戶隱私事宜，因此未有相關政策及措施。各營運點於本年度亦未有接獲任何客戶投訴個案。

OPERATION RESPONSIBILITY (CONTINUED)

營運責任 (續)

SUPPLY CHAIN MANAGEMENT

A harmonious upstream and downstream relationship is an important condition for the sustainable development of an enterprise. The Group is not only committed to continuously improving its own sustainable development level, but also committed to strengthening the sustainability of the entire supply chain and strengthening the Group's sustainable procurement capabilities. In terms of supplier categories, the Group's suppliers are mainly natural gas suppliers and equipment suppliers. As the pipeline natural gas procurement in Zhejiang Province is dominated by the government, the Group's natural gas is mainly provided by its supplier, Zhejiang Zheneng Natural Gas Pipeline Network Co., Ltd., which ensures the sustainability of the Group's natural gas supply chain to a certain extent. The Group's equipment procurement is mainly based on bidding. Due to the unique feature of the generator set equipment at each Operating Station, the selection range of related equipment and service providers is relatively limited. Based on industry characteristics and operational characteristics, the Group has formulated a series of supply chain management systems, including the "Measures for the Administration of Bidding of Puxing Energy Power Plant Management Center", the "Measures for the Administration of Material Contract of Puxing Energy Power Plant Management Center", the "Measures for the Administration of Material Procurement of Puxing Energy Power Plant Management Center" and the "Measures for the Administration of Material Supplier Management of Puxing Energy Power Plant Management Center", covering the operation modes of three procurement methods, being bidding procurement, centralised procurement and independent procurement, as well as the management measures for the whole process from admittance, evaluation to withdrawal of suppliers, actively incorporated ESG factors into the evaluation scope, and promoted the development of procurement with a standardised system.

供應鏈管理

和諧共進的上下游關係是企業可持續發展的重要條件，本集團不僅致力於不斷提升自身的可持續發展水平，同時致力於加強整個供應鏈的可持續性，並強化本集團的可持續採購能力。在供應商類別方面，本集團供應商主要以天然氣供應商及設備供應商為主。由於浙江省的管道天然氣採購系由政府主導，本集團的天然氣主要是由供應商浙江浙能天然氣管網有限公司負責提供，令本集團的天然氣供應鏈的可持續性獲得一定程度的保障。本集團設備採購以招標方式為主，受限於各營運點的發電機組設備的獨特性，相關設備及服務供應商選擇範圍相對狹窄，經結合行業特性及營運特點制定了《普星能量電廠管理中心招標管理辦法》《普星能量電廠管理中心物資合同管理辦法》《普星能量電廠管理中心物資採購管理辦法》及《普星能量電廠管理中心物資供應商管理辦法》等一系列供應鏈管理制度，覆蓋招標採購、集中採購、自主採購三種採購方式的運行模式及供應商從准入、評估到退出全流程的管理措施，積極將ESG因素納入評估範圍，以規範化的制度，推進採購工作的展開。

OPERATION RESPONSIBILITY (CONTINUED)

營運責任 (續)

- Supplier admittance: For new suppliers, the Group conducts enterprise qualification review work, and includes the basic business qualifications, the advanced level of major production equipment and testing equipment, production scale, financial capacity, main product technical indicators, quality standards, after-sales service of the suppliers and other ESG factors in the review. Before bidding, on-site due diligence will be organised for bulk purchasing groups to evaluate the scale, production technology and environmental protection qualifications of suppliers, and suppliers who have passed the enterprise qualification review or comprehensive capability assessment will be included in the “Qualified Supplier List” in due course.
- Supplier assessment and re-evaluation: The Group implements dynamic management on the “Qualified Supplier List”, and conducts assessments at an annual basis. Revision to the “Qualified Supplier List” may be made according to the assessment results.
- Supplier withdrawal: In addition to the bankruptcy of suppliers, the Group will refuse to cooperate with suppliers who are found to have resorted to fraud, coercion, bid rigging and other illegitimate means during the process of cooperation with the Group; suppliers with unsatisfactory assessment results will also be eliminated.
- 供應商准入：對於新增供應商，本集團開展企業資質審查工作，將供應商基本工商資質、主要生產設備與檢測設備先進水平、生產規模、財務能力、主要產品技術指針、質量水平、售後服務情況等ESG因素納入審查工作。在招標前，對於大宗採購集團會組織現場盡調，對供應商規模、生產工藝、環保資質進行評估，通過企業資質審查或綜合能力評估的供應商將被適時納入《合格供應商名冊》。
- 供應商的考核及再評價：本集團對《合格供應商名冊》實施動態管理，並以每年評定一次的頻率進行考核，根據考核結果對《合格供應商名冊》進行修訂。
- 供應商退出：除供應商破產外，在與本集團合作過程中，被發現採用欺詐、脅迫、串標等不正當手段的供應商，本集團將拒絕與其再合作；供應商考核結果不合要求的供應商亦將予以淘汰。

OPERATION RESPONSIBILITY (CONTINUED) 營運責任 (續)

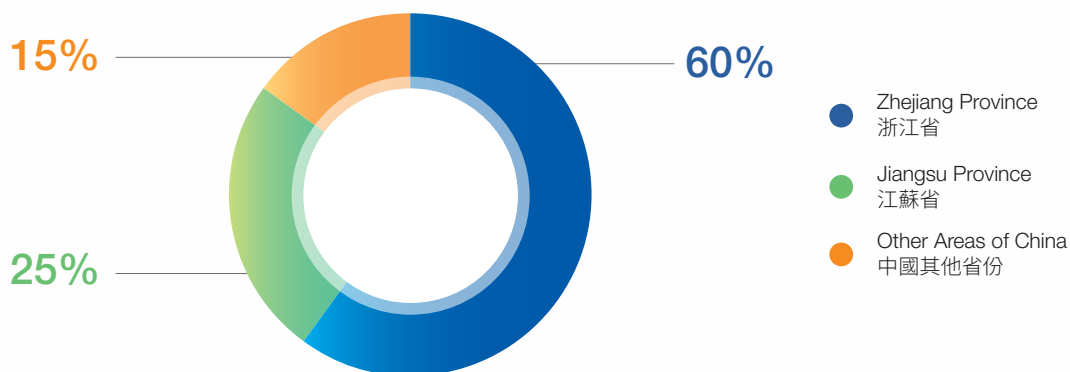
The Group is well aware of the importance of energy conservation in the whole life cycle. In terms of energy conservation in operation, it is inseparable from careful selection in the procurement process. Therefore, in the procurement of major energy-consuming equipment, large-brand equipment with better operation efficiency, better energy-saving performance and longer expected service life are selected, and the relevant supervision has been incorporated into the above-mentioned supply chain management process. In addition, we also purchase regular maintenance and repair services from the original manufacturer to ensure the smooth and safe operation of units, reduce equipment failures, extend service life, and avoid major repairs caused by failures and interruptions to the power generation and heating business. The operation and maintenance records of each Operating Station relating to the periodic inspection of equipment will be monitored.

During the Year, the Group had a total of 57 qualified suppliers. In the future, the Group plans to further refine the ESG-related assessment factors in the supplier admittance and assessment process to enhance the sustainability of its supply chain.

本集團深知全生命週期節能的重要性，就運行節能而言，離不開採購環節的精挑細選，為此在主要耗能設備的採購上，均選用運行效果較好、節能性能較高、預期使用壽命較長的大品牌設備，相關監察已納入上述的供應鏈管理流程。此外，我們亦採購原廠的定期維護檢修服務，以確保機組運行暢順和安全，減少設備故障，延長使用壽命，避免因故障導致的重大修理和對發電與供熱業務帶來的中斷影響，各營運點定期檢查設備的運維記錄進行監察。

年內，本集團共有合格供應商57家。未來，本集團計劃在供應商准入及評估流程中進一步細化ESG相關評估因素，以提升供應鏈可持續性。

Suppliers of Puxing Energy by Region
普星能量按地區劃分的供應商分佈



CO-BUILDING THE COMMUNITY

社區共建

The Group is well aware that the rapid development of an enterprise cannot be achieved without the support and understanding of the government and the community where it operates. While actively building and continuously providing stable energy supply to the country, the Group is also committed to becoming an excellent corporate citizen and adheres to the synergy between the enterprise and the community. It supports community building by encouraging and organising employees to participate in volunteer activities, etc.

In order to establish an effective and long-term mechanism for community co-building, each Operating Station actively organises employees to participate in various community activities based on the principle of “paying attention to community development, maintaining communication with the community and actively participating in community activities” and in accordance with the needs of the community where it operates. During the Year, each Operating Station focused on education, agricultural assistance, environmental protection, healthcare and other aspects, participated in a total of 7 public welfare projects, invested RMB4,396.1, and 273 employees participated successively in public welfare activities, contributing a total of 39 volunteer hours.

The Group set the second week of November as “week of sending warmth and care (送溫暖獻愛心週)” to carry out publicity and guidance within the Group, and allow employees to make heartfelt, sincere and voluntary contributions. In 2025, 54 employees of Jingxing Power Plant made loving donations, raising totalling RMB1,210.

本集團深知企業的飛速發展離不開政府、所在社區的支持和理解，在積極建設、持續為國家提供穩定能源供應的同時，本集團亦致力於成為優秀的企業公民，堅持企業與社區協同發展的思路，通過鼓勵、組織員工參與志願者活動等多種方式，支持社區建設。

為建立有效的社區共建長效機制，各營運點以「關注社區動態，保持與社區溝通，積極參與社區活動」為原則，因應所屬社區需要，積極組織員工參與各項社區活動。年內，各營運點聚焦於教育、助農、環境保護、醫療健康等範疇，共參與公益項目7個，投資人民幣4,396.1元，先後有273人次投入公益活動，共貢獻39義工小時。

本集團將11月的第二周設置為「送溫暖獻愛心周」，進行全集團宣傳引導，讓員工進行出自於心、真誠、自願的捐款。二零二五年，京興電廠54名員工進行了愛心捐款，共計人民幣1,210元。

CO-BUILDING THE COMMUNITY (CONTINUED)

社區共建 (續)

Power plant 電廠	Contribution aspect 貢獻範疇	Name of project 項目名稱	Number of volunteers 義工服務人次	Volunteer service hours 義工服務時數
Anji Power Plant 安吉電廠	Labour Demand 勞工需求	Setting up Caring Station 設置愛心驛站	5	36
	Collective Donations 集體捐款	Month of Sending Warmth and Car 送溫暖獻愛心月	63	0
Jingxing Power Plant 京興電廠	Collective Donations 集體捐款	Month of Sending Warmth and Care 送溫暖獻愛心月	54	0
Deneng Power Plant 德能電廠	Environment 環境	Learning Lei Feng • Litter-picking Public Welfare Activity 學雷鋒 • 撿拾垃圾公益活動	8	2
Bluesky Power Plant 藍天電廠	Health 健康	Voluntary Blood Donation 無償獻血	3	1
	Assistance 幫扶	Donating clothes 捐贈愛心衣物	70	0
	Collective Donations 集體捐款	Month of Sending Warmth and Care 送溫暖獻愛心月	3	1

CO-BUILDING THE COMMUNITY (CONTINUED)

社區共建 (續)



Deneng Power Plant's community environment maintenance activity in 2025
德能電廠二零二五年社區環境維護活動



Jingxing Power Plant organized blood donation activity
京興電廠組織獻血活動

OVERVIEW OF KEY PERFORMANCE INDICATORS (KPIs)

關鍵績效指標總覽

ENVIRONMENTAL PERFORMANCE

環境表現

Environmental KPIs 環境關鍵績效指標	2025 2025年	2024 2024年	Unit 單位
A1.1 Types of emissions and related emissions data⁷ 排放物種類及相關排放數據⁷			
Nitrogen oxides (NOx) 氮氧化物	26,934	47,562	kg 千克
Sulphur oxides (SOx) 硫氧化物	1,150	1,586	kg 千克
Respirable suspended particulates (RSP) 可吸入懸浮粒子	1,429	1,746	kg 千克
DI Total greenhouse gas emissions 溫室氣體總排放量			
Scope 1 Direct greenhouse gas emissions ⁸ 範圍1直接溫室氣體排放 ⁸	101,892	168,049	tonne of CO ₂ e 公噸二氧化碳當量
Scope 2 Energy indirect greenhouse gas emissions ⁹ 範圍2能源間接溫室氣體排放 ⁹	2,220	11,124	tonne of CO ₂ e 公噸二氧化碳當量
Total greenhouse gas emissions (Scope 1 + Scope 2) 溫室氣體總排放量(範圍一+範圍二)	104,113	179,173	tonne of CO ₂ e 公噸二氧化碳當量
Total greenhouse gas emission intensity (Scope 1 + Scope 2) (in revenue) 總溫室氣體密度(範圍1+範圍2)(以收益計算)	2.83	3.36	tonne of CO ₂ e/ RMB10,000 公噸二氧化碳當量/ 萬元人民幣

⁷ The waste gas emissions were overall lower due to the lower power generation of the Group in 2025 as compared to that of 2024.

⁸ Scope 1: includes the greenhouse gas emissions generated from fuel combustion of stationary sources and mobile sources, and greenhouse gas arising from the use of refrigerants and fire extinguishing agents. Direct greenhouse gas emissions were calculated based on Appendix 4 to "China Energy Statistical Yearbook 2020", "Greenhouse Gas Protocol", "IPCC, 2014: Climate Change 2014: Synthesis Report, Contribution of Working Groups I, II and III to the Fifth Assessment Report of the Intergovernmental Panel on Climate Change", "Guidance for Compiling Provincial Greenhouse Gas Emission Inventory" (Trial, May 2011) and "Energy Statistics Manual" (Department of Energy Statistics, National Bureau of Statistics, 2010).

⁹ Scope 2: includes the greenhouse gas emissions generated from consumption of purchased electricity. The average CO₂ emission factors for national power grids in China used for calculating indirect greenhouse gas emissions in 2025 were based on the "Announcement on the Release of the 2023 Carbon Dioxide Emission Factor for Electricity" issued by the Ministry of Ecology and Environment of the People's Republic of China.

⁷ 由於本集團2025年發電量較2024年有所下降，因此廢氣排放量整體有所下降。

⁸ 範圍1：包括固定源及移動源的燃料燃燒和因使用制冷劑與滅火劑釋放所造成的溫室氣體排放等。直接溫室氣體排放根據《中國能源統計年鑒2020》附錄4、《溫室氣體核算體系》《IPCC, 2014：氣候變化2014：綜合報告，政府間氣候變化專門委員會第五次評估報告第一工作組、第二工作組和第三工作組報告》《省級溫室氣體列表編製指南》(試行，2011年5月)和《能源統計工作手冊》(國家統計局能源司，2010)計算所得。

⁹ 範圍2：包括外購電力產生的溫室氣體排放。2025年間接溫室氣體排放根據中華人民共和國生態環境部發佈的《關於發佈2023年電力二氧化碳排放因子的公告》中全國電網平均二氧化碳排放因子計算所得。

APPENDIX (CONTINUED)

附錄 (續)

Environmental KPIs 環境關鍵績效指標	2025 2025年	2024 2024年	Unit 單位
A1.3 Total hazardous wastes 有害廢棄物總量 Total hazardous wastes 有害廢棄物總量 Hazardous waste intensity (in revenue) 有害廢棄物密度 (以收益計算)	1.6 0.04	2.6 0.05	tonne 公噸 kg/RMB10,000 千克／萬元人民幣
A1.4 Total non-hazardous wastes 無害廢棄物總量 Total non-hazardous wastes 無害廢棄物總量 Non-hazardous waste intensity (in revenue) 無害廢棄物密度 (以收益計算)	30.3 0.82	43.4 0.81	tonne 公噸 kg/RMB10,000 千克／萬元人民幣

APPENDIX (CONTINUED)

附錄 (續)

Environmental KPIs 環境關鍵績效指標	2025 2025年	2024 2024年	Unit 單位
A2.1 Total energy consumption 能源總耗量			
Direct energy ¹⁰ 直接能源 ¹⁰	277,567	370,716	MWh 兆瓦時
Gasoline 汽油	133	185	MWh 兆瓦時
Diesel 柴油	14	7	MWh 兆瓦時
Natural gas 天然氣	503,193	740,281	MWh 兆瓦時
Acetylene 乙炔	12.43	20.06	MWh 兆瓦時
Power generation (photovoltaic power generation) 發電量 (光伏發電)	1,020	1,059	MWh 兆瓦時
Sold electricity (photovoltaic power generation) 外售電力 (光伏發電)	(122)	(93)	MWh 兆瓦時
Sold electricity (natural gas) 外售電力 (天然氣)	(166,853)	(288,946)	MWh 兆瓦時
Sold steam (heat, natural gas) 外售蒸汽 (熱力, 天然氣)	(59,830)	(81,797)	MWh 兆瓦時
Indirect energy 間接能源	4,185	20,731	MWh 兆瓦時
Purchased electricity 外購電力	4,185	20,731	MWh 兆瓦時
Total energy consumption 能源總耗量	281,752	391,447	MWh 兆瓦時
Energy intensity (in revenue) 能源密度 (以收益計算)	7.65	7.33	MWh/RMB10,000 兆瓦時/萬元人民幣

¹⁰ Excluding direct energy consumption associated with products sold.

¹⁰ 不包含作為產品銷售的直接能源消耗。

APPENDIX (CONTINUED)

附錄 (續)

SOCIAL PERFORMANCE

社會表現

Employment category 僱傭類別		Number of Employees 員工人數	
		2025 2025年	2024 2024年
Full-time employee 全職員工			
Gender 性別	Male 男性	145	220
	Female 女性	43	58
Employee category 僱員類別			
	Senior management 高級管理人員	4	6
	Middle management 中級管理人員	12	28
	General staff 一般員工	172	244
Age 年齡			
	Aged under 30 三十歲以下	92	124
	Age 30-40 三十歲至四十歲	41	84
	Aged 41-50 四十一歲至五十歲	39	60
	Aged over 50 五十歲以上	16	10
Total full-time employees 全職員工總計		188	188
Service subcontractors' employees 服務外包商員工		0	27
Total employees 員工總數		188	305

APPENDIX (CONTINUED)

附錄 (續)

Number and percentage of newly hired employees and employee turnover 新入職及員工流失人數及比率		Number and percentage of newly hired employees 新入職人數及比率		Number and percentage of employee turnover 員工流失人數及比率	
		2025 2025年	2024 2024年	2025 2025年	2024 2024年
Gender 性別	Male 男性	19 (8%)	38 (17%)	13 (6%)	37 (17%)
	Female 女性	1 (2%)	7 (12%)	– (0%)	14 (24%)
Age 年齡	Aged under 30 三十歲以下	18 (13%)	44 (35%)	8 (6%)	23 (19%)
	Age 30-40 三十歲至四十歲	2 (3%)	1 (1%)	5 (7%)	24 (29%)
	Aged 41-50 四十一歲至五十歲	– (0%)	– (0%)	0 (0%)	4 (7%)
	Aged over 50 五十歲以上	– (0%)	– (0%)	0 (0%)	– (0%)
	Total 總計	20 (7%)	45 (16%)	13 (4%)	51 (18%)

APPENDIX (CONTINUED) 附錄 (續)

Occupational safety and health performance 職業安全健康表現	Employees 員工		Service Subcontractors' Employees 服務外包商員工	
	2025	2024	2025	2024
	2025年	2024年	2025年	2024年
Number and percentage of work-related fatalities 因工關係而死亡的人數及比率	- (0%)	- (0%)	- (0%)	- (0%)
Number and percentage of work-related injuries 因工受傷人數及比率	3 (0.010%)	1 (0.004%)	- (0%)	- (0%)
Lost days due to work injury 因工傷損失工作日數	179	27 (0.0004%)	- (0%)	- (0%)

APPENDIX (CONTINUED)

附錄 (續)

Employee training 員工培訓		Number and percentage of employees trained ¹²		Training hours (hours)		Average training hours (hours) ¹³	
		培訓人數及比率 ¹²		培訓時數 (小時)		平均培訓時數 (小時) ¹³	
		2025 2025年	2024 2024年	2025 2025年	2024 2024年	2025 2025年	2024 2024年
Gender 性別	Male 男性	231 (100%)	220 (100%)	5,428	8,077.4	24.7	36.7
	Female 女性	65 (100%)	58 (100%)	1,109.5	1,954.2	19.1	33.7
Employee category 僱員類別	Senior management 高級管理人員	6 (100%)	6 (100%)	94	119.5	15.7	19.9
	Middle management 中級管理人員	29 (100%)	28 (100%)	443	785.6	15.3	28.1
	General staff 一般員工	261 (100%)	244 (100%)	6,000.5	9,126.5	23.0	37.4
	Total 總計	296 (100%)	278 (100%)	6,537.5	10,031.6	22.1	36.1

Operating Station 各營運點	Region of suppliers 供應商所在地區	Products or services provided 所提供之 產品或服務	Number of suppliers 供應商數目	Number of suppliers that implement relevant practices 執行相關慣例 的供應商數目
Jingxing Power Plant, Anji Power Plant, Deneng Power Plant, Bluesky Power Plant, Quzhou Power Plant 京興電廠、安吉電廠、 德能電廠、藍天電廠、 衢州電廠	Zhejiang Province, Jiangsu Province and other provinces 浙江省 江蘇省 以及其他省份	Natural gas, equipment, office supplies, chemical drugs, etc. 天然氣、設備、 辦公用品、化學藥品等	57	57

¹² Calculation of the number of employees trained: Number of employees trained divided by the number of employees of the same type.

¹³ Calculation of average hours: The training hours of such type of employment divided by the number of employees of the same type.

¹² 培訓人數的計算方法為：培訓人數除以同一類別的員工數目。

¹³ 平均時數的計算方法為：該僱傭類別培訓時數除以同一類別員工數目。

APPENDIX (CONTINUED)

附錄 (續)

CONTENT INDEX TO THE REPORT

報告內容索引

Aspects 層面	Content 內容	Chapter in this Report 在報告中位置
Part B: Mandatory disclosure requirements B部分：強制披露規定		
	Governance Structure 管治架構	Governance Structure 管治架構
	Reporting principles 匯報原則	About this Report 關於本報告
	Reporting scope 匯報範圍	About this Report 關於本報告
Part C: “Comply or explain” provisions C部分：「不遵守就解釋」條文		

APPENDIX (CONTINUED)

附錄 (續)

Aspects 層面	Content 內容	Chapter in this Report 在報告中位置
A1 Emissions A1 排放物		
一般披露	Information on: (a) the policies; and (b) compliance with relevant laws and regulations that have a significant impact on the issuer relating to air and greenhouse gas emissions, discharges into water and land, and generation of hazardous and non-hazardous waste. 有關廢氣及溫室氣體排放、向水及土地的排污、有害及無害廢棄物的產生等的： (a) 政策；及 (b) 遵守對發行人有重大影響的相關法律及規例的資料。	Emissions 排放物
A1.1	The types of emissions and respective emissions data. 排放物種類及相關排放數據。	Overview of Key Performance Indicators (KPIs) 關鍵績效指標總覽
A1.3	Total hazardous waste produced (in tonnes) and, where appropriate, intensity (e.g. per unit of production volume, per facility). 所產生有害廢棄物總量 (以噸計算) 及 (如適用) 密度 (如以每產量單位、每項設施計算)。	Overview of Key Performance Indicators (KPIs) 關鍵績效指標總覽
A1.4	Total non-hazardous waste produced (in tonnes) and, where appropriate, intensity (e.g. per unit of production volume, per facility). 所產生無害廢棄物總量 (以噸計算) 及 (如適用) 密度 (如以每產量單位、每項設施計算)。	Overview of Key Performance Indicators (KPIs) 關鍵績效指標總覽
A1.5	Description of emissions target(s) set and steps taken to achieve them. 描述所訂立的排放量目標及為達到這些目標所採取的步驟。	Emissions 排放物
A1.6	Description of how hazardous and non-hazardous wastes are handled, and a description of reduction target(s) set and steps taken to achieve them. 描述處理有害及無害廢棄物的方法，及描述所訂立的減廢目標及為達到這些目標所採取的步驟。	Emissions 排放物

APPENDIX (CONTINUED)

附錄 (續)

Aspects 層面	Content 內容	Chapter in this Report 在報告中位置
A2 <i>Use of resources</i> A2 資源使用		
General Disclosure 一般披露	Policies on the efficient use of resources, including energy, water and other raw materials. 有效使用資源 (包括能源、水及其他原材料) 的政策。	Use of resources 資源使用
A2.1	Direct and/or indirect energy consumption by type (e.g. electricity, gas or oil) in total (kWh in '000s) and intensity (e.g. per unit of production volume, per facility). 按類型劃分的直接及或間接能源 (如電、氣或油) 總耗量 (以千個千瓦時計算) 及密度 (如以每產量單位、每項設施計算)。	Overview of Key Performance Indicators (KPIs) 關鍵績效指標總覽
A2.2	Water consumption in total and intensity (e.g. per unit of production volume, per facility). 總耗水量及密度 (如以每產量單位、每項設施計算)。	Overview of Key Performance Indicators (KPIs) 關鍵績效指標總覽
A2.3	Description of energy use efficiency target(s) set and steps taken to achieve them. 描述所訂立的能源使用效益計劃目標及為達到這些目標所採取的步驟。	Use of resources 資源使用
A2.4	Description of whether there is any issue in sourcing water that is fit for purpose, water efficiency target(s) set and steps taken to achieve them. 描述求取適用水源上可有任何問題, 以及所訂立的用水效益目標及為達到這些目標所採取的步驟。	Use of resources 資源使用
A2.5	Total packaging material used for finished products (in tonnes) and, if applicable, with reference to per unit produced. 製成品所用包裝材料的總量 (以噸計算) 及 (如適用) 每生產單位佔量。	N/A 不適用

APPENDIX (CONTINUED)

附錄 (續)

Aspects 層面	Content 內容	Chapter in this Report 在報告中位置
A3 <i>Environment and natural resources</i> A3 環境及天然資源		
General Disclosure 一般披露	Policies on minimising the issuer's significant impact on the environment and natural resources. 減低發行人對環境及天然資源造成重大影響的政策。	Environment and Natural Resources 環境及天然資源
A3.1	Description of the significant impacts of activities on the environment and natural resources and the actions taken to manage them. 描述業務活動對環境及天然資源的重大影響及已採取管理有關影響的行動。	Environment and Natural Resources 環境及天然資源
B1 <i>Employment</i> B1 僱傭		
General Disclosure 一般披露	Information on: (a) the policies; and (b) compliance with relevant laws and regulations that have a significant impact on the issuer relating to compensation and dismissal, recruitment and promotion, working hours, rest periods, equal opportunity, diversity, anti-discrimination, and other benefits and welfare. 有關薪酬及解僱、招聘及晉升、工作時數、假期、平等機會、多元化、反歧視以及其他待遇及福利的： (a) 政策；及 (b) 遵守對發行人有重大影響的相關法律及規例的資料。	Employee Care 員工關懷
B1.1	Total workforce by gender, employment type (for example, full-or part-time), age group and geographical region. 按性別、僱傭類型 (如全職或兼職)、年齡組別及地區劃分的僱員總數。	Overview of Key Performance Indicators (KPIs) 關鍵績效指標總覽
B1.2	Employee turnover rate by gender, age group and geographical region. 按性別、年齡組別及地區劃分的僱員流失比率。	Overview of Key Performance Indicators (KPIs) 關鍵績效指標總覽

APPENDIX (CONTINUED)

附錄 (續)

Aspects 層面	Content 內容	Chapter in this Report 在報告中位置
<i>B2 Health and safety</i> <i>B2 健康與安全</i>		
General Disclosure 一般披露	Information on: (a) the policies; and (b) compliance with relevant laws and regulations that have a significant impact on the issuer relating to providing a safe working environment and protecting employees from occupational hazards. 有關提供安全工作環境及保障僱員避免職業性危害的： (a) 政策；及 (b) 遵守對發行人有重大影響的相關法律及規例的資料。	Employee Care 員工關懷
B2.1	Number and rate of work-related fatalities occurred in each of the past three years including the reporting year. 過去三年 (包括匯報年度) 每年因工亡故的人數及比率。	Overview of Key Performance Indicators (KPIs) 關鍵績效指標總覽
B2.2	Lost days due to work injury. 因工傷損失工作日數。	Overview of Key Performance Indicators (KPIs) 關鍵績效指標總覽
B2.3	Description of occupational health and safety measures adopted, and how they are implemented and monitored. 描述所採納的職業健康與安全措施，以及相關執行及監察方法。	Employee Care 員工關懷
<i>B3 Development and training</i> <i>B3 發展及培訓</i>		
General Disclosure 一般披露	Policies on improving employees' knowledge and skills for discharging duties at work. Description of training activities. Note: Training refers to vocational training. It may include internal and external courses paid by the employer. 有關提升僱員履行工作職責的知識及技能的政策。描述培訓活動。 註：培訓指職業培訓，可包括由僱主付費的內外部課程。	Employee Care 員工關懷
B3.1	The percentage of employees trained by gender and employee category (e.g. senior management, middle management). 按性別及僱員類別 (如高級管理層、中級管理層等) 劃分的受訓僱員百分比。	Overview of Key Performance Indicators (KPIs) 關鍵績效指標總覽
B3.2	The average training hours completed per employee by gender and employee category. 按性別及僱員類別劃分，每名僱員完成受訓的平均時數。	Overview of Key Performance Indicators (KPIs) 關鍵績效指標總覽

APPENDIX (CONTINUED)

附錄 (續)

Aspects 層面	Content 內容	Chapter in this Report 在報告中位置
<i>B4 Labour standard</i> B4 勞工準則		
General Disclosure 一般披露	Information on: (a) the policies; and (b) compliance with relevant laws and regulations that have a significant impact on the issuer relating to preventing child or forced labour. 有關防止童工或強制勞工的： (a) 政策；及 (b) 遵守對發行人有重大影響的相關法律及規例的資料。	Employee Care 員工關懷
B4.1	Description of measures to review employment practices to avoid child and forced labour 描述檢討招聘慣例的措施以避免童工及強制勞工。	Employee Care 員工關懷
B4.2	Description of steps taken to eliminate such non-compliant practices when discovered. 描述在發現違規情況時消除有關情況所採取的步驟。	Employee Care 員工關懷
<i>B5 Supply chain management</i> B5 供應鏈管理		
General Disclosure 一般披露	Policies on managing environmental and social risks of the supply chain. 管理供應鏈的環境及社會風險政策。	Operation Responsibility 營運責任
B5.1	Number of suppliers by geographical region. 按地區劃分的供應商數目。	Overview of Key Performance Indicators (KPIs) 關鍵績效指標總覽
B5.2	Description of practices relating to engaging suppliers, number of suppliers where the practices are being implemented, and how they are implemented and monitored. 描述有關聘用供應商的慣例，向其執行有關慣例的供應商數目、以及有關慣例的執行及監察方法。	Operation Responsibility 營運責任
B5.3	Description of practices used to identify environmental and social risks along the supply chain, and how they are implemented and monitored. 描述有關識別供應鏈每個環節的環境及社會風險的慣例，以及相關執行及監察方法。	Operation Responsibility 營運責任
B5.4	Description of practices used to promote environmentally preferable products and services when selecting suppliers, and how they are implemented and monitored. 描述在揀選供應商時促使多用環保產品及服務的慣例，以及相關執行及監察辦法。	Operation Responsibility 營運責任

APPENDIX (CONTINUED)

附錄 (續)

Aspects 層面	Content 內容	Chapter in this Report 在報告中位置
<i>B6 Product responsibility</i> <i>B6 產品責任</i>		
General Disclosure 一般披露	Information on: (a) the policies; and (b) compliance with relevant laws and regulations that have a significant impact on the issuer relating to health and safety, advertising, labelling and privacy matters relating to products and services provided and methods of redress. 有關所提供產品和服務的健康與安全、廣告、標籤及私隱事宜以及補救方法的： (a) 政策；及 (b) 遵守對發行人有重大影響的相關法律及規例的資料。	Operation Responsibility 營運責任
B6.1	Percentage of total products sold or shipped subject to recalls for safety and health reasons. 已售或已運送產品總數中因安全與健康理由而須回收的百分比。	N/A 不適用
B6.2	Number of products and service related complaints received and how they are dealt with. 接獲關於產品及服務的投訴數目以及應對方法。	Operation Responsibility 營運責任
B6.3	Description of practices relating to observing and protecting intellectual property rights. 描述與維護及保障知識產權有關的慣例。	Operation Responsibility 營運責任
B6.4	Description of quality assurance process and recall procedures. 描述質量檢定過程及產品回收程序。	Operation Responsibility 營運責任
B6.5	Description of consumer data protection and privacy policies, and how they are implemented and monitored. 描述消費者資料保障及私隱政策，以及相關執行及監察方法。	Operation Responsibility 營運責任

APPENDIX (CONTINUED)

附錄 (續)

Aspects 層面	Content 內容	Chapter in this Report 在報告中位置
<i>B7 Anti-corruption</i> <i>B7 反貪污</i>		
General Disclosure 一般披露	Information on: (a) the policies; and (b) compliance with relevant laws and regulations that have a significant impact on the issuer relating to bribery, extortion, fraud and money laundering. 有關防止賄賂、勒索、欺詐及洗黑錢的： (a) 政策；及 (b) 遵守對發行人有重大影響的相關法律及規例的資料。	Operation Responsibility 營運責任
B7.1	Number of concluded legal cases regarding corrupt practices brought against the issuer or its employees during the reporting period and the outcomes of the cases. 於匯報期內對發行人或其僱員提出並已審結的貪污訴訟案件的數目及訴訟結果。	Operation Responsibility 營運責任
B7.2	Description of preventive measures and whistle-blowing procedures, and how they are implemented and monitored. 描述防範措施及舉報程序，以及相關執行及監察方法。	Operation Responsibility 營運責任
B7.3	Description of anti-corruption training provided to directors and employees. 描述向董事及員工提供的反貪污培訓。	Operation Responsibility 營運責任
<i>B8 Community investment</i> <i>B8 社區投資</i>		
General Disclosure 一般披露	Policies on community engagement to understand the needs of the communities where the issuer operates and to ensure its activities take into consideration the communities' interests. 有關以社區參與來了解營運所在社區需要和確保其業務活動會考慮社區利益的政策。	Co-building the Community 社區共建
B8.1	Focus areas of contribution (e.g. education, environmental concerns, labour needs, health, culture, sport). 專注貢獻範疇 (如教育、環境事宜、勞工需求、健康、文化、體育)。	Co-building the Community 社區共建
B8.2	Resources contributed (e.g. money or time) to the focus area. 在專注範疇所動用資源 (如金錢或時間)。	Co-building the Community 社區共建

APPENDIX (CONTINUED)

附錄 (續)

Aspects 層面	Content 內容	Chapter in this Report 在報告中位置
Part D: Climate-related Disclosures D部分：氣候相關披露		
<i>D-I Governance</i> <i>D-I 治理</i>		
	<p>The governance body(s) responsible for oversight of climate-related risks and opportunities 負責監督氣候相關風險和機遇的治理機構</p> <p>Management's role in the governance processes, controls and procedures used to monitor, manage and oversee climate-related risks and opportunities 管理層在用以監察、管理及監督氣候相關風險和機遇的管理流程、監控措施及程序中的角色</p>	<p>Responding to Climate Change 應對氣候變化</p> <p>Responding to Climate Change 應對氣候變化</p>
<i>D-II Strategy</i> <i>D-II 策略</i>		
	Climate-related risks and opportunities 氣候相關風險和機遇	Responding to Climate Change 應對氣候變化
	Business model and value chain 業務模式和價值鏈	Responding to Climate Change 應對氣候變化
	Strategy and decision-making 策略和決策	NB1 註1
	Financial position, financial performance and cash flows 財務狀況、財務表現及現金流量	NB2 註2
	Climate resilience 氣候韌性	NB2 註2

APPENDIX (CONTINUED)

附錄 (續)

Aspects 層面	Content 內容	Chapter in this Report 在報告中位置
<i>D-III Risk Management</i> D-III 風險管理		
	The processes and related policies used to identify, assess, prioritise and monitor climate-related risks 用於識別、評估氣候相關風險，以及釐定當中輕重緩急並保持監察的流程及相關政策	Responding to Climate Change 應對氣候變化
	The processes and related policies used to identify, assess, prioritise and monitor climate-related opportunities 用於識別、評估氣候相關機遇，以及釐定當中輕重緩急並保持監察的流程及相關政策	Responding to Climate Change 應對氣候變化
	The extent to which, and how, the processes for identifying, assessing, prioritising and monitoring climate-related risks and opportunities are integrated into and inform the issuer's overall risk management process. 氣候相關風險和機遇的識別、評估、優次排列和監察流程，是如何融入發行人的整體風險管理流程，以及融入的程度如何。	Responding to Climate Change 應對氣候變化
<i>D-IV Metrics and Targets</i> D-IV 指標與目標		
	Greenhouse gas emissions 溫室氣體排放	Responding to Climate Change 應對氣候變化
	Climate-related transition risks 氣候相關轉型風險	NB2 註2
	Climate-related physical risks 氣候相關物理風險	NB2 註2
	Climate-related opportunities 氣候相關機遇	NB2 註2
	Capital deployment 資本運用	NB3 註3
	Internal carbon prices 內部碳定價	NB3 註3
	Remuneration 薪酬	NB3 註3
	Climate-related targets 氣候相關目標	NB3 註3

NB 1: The natural gas power plants operated by the Group are all peaking power plants, which are an organic part of helping address energy demands brought about by climate change for the entire society, making it difficult to separately formulate transition plans or emission reduction targets.

NB 2: The Group has carried out a preliminary evaluation of the qualitative financial implications of climate change. At present, the calculations and scenario analysis of quantitative financial implications in response to climate change have not yet been conducted, which will be conducted when conditions mature and will be disclosed accordingly.

NB 3: The Group has not carried out capital deployment, internal carbon pricing, the incorporation of climate-related factors into remuneration policies, or the setting of climate-related targets in response to climate-related risks and opportunities. Relevant work will be performed when conditions mature and will be disclosed in the report.

註1：本集團經營的天然氣電廠均屬於調峰電廠，系協助全社會應對氣候變化所帶來的能源需求的有機組成部分，難以單獨制定轉型計劃或減排目標。

註2：本集團已經初步識評估氣候變化的定性財務影響，目前尚未開展對應對氣候變化開展定量財務影響測算和情景分析，將在條件成熟後適時開展，屆時將納入披露。

註3：本集團尚未開展氣候相關風險和機遇的資本運用、內部碳定價、氣候相關因素納入薪酬政策和氣候相關目標制定，將在條件成熟後開展相關工作，並於報告中披露。

APPENDIX (CONTINUED)

附錄 (續)

READERS' FEEDBACK

Dear Readers,

Thank you for reading this Report. This is the tenth ESG Report prepared by Puxing Energy. In order to continuously enhance and improve the sustainable development management of the Group, we sincerely hope to receive opinions or suggestions from you on this Report. Please help to complete the following form and return to us by email to info@puxingenergy.com.

1. What is your opinion to this Report?
 Good Fair To be improved
2. Do you think the information and data disclosed in this Report are clear, accurate and complete?
 Yes Not quite To be improved
3. Do you think this Report reflects the significant influence of Puxing Energy to the economy, society and environment?
 Yes Not exactly To be improved
4. How do you think of Puxing Energy's performance in safeguarding the interests of stakeholders?
 Good Moderate To be improved
5. Your opinions or suggestions on the sustainable development management of Puxing Energy:

Please leave your contact information if convenient:

Name:

Occupation:

Company:

E-mail:

Tel:

Contact address:

Postal code:

Thanks for your feedback. We will take thorough consideration of your opinions and suggestions and make sure your personal information is handled properly.

讀者回饋

尊敬的讀者：

您好!感謝您閱讀本報告。這是普星能量編寫的第十份ESG報告，為了不斷提高和改進我們的可持續發展管理，我們真誠地希望獲取來自您的寶貴意見和建議。請您協助完成本頁內容並電郵至info@puxingenergy.com回饋給我們。

1. 您對本報告的總體評價是?
 好 一般 有待提高
2. 您認為本報告在信息和數據披露的清晰度、準確性和完整性上表現如何?
 好 一般 有待提高
3. 您認為本報告在反映普星能量對經濟、社會和環境的重大影響方面表現如何?
 好 一般 有待提高
4. 您認為普星能量在維護相關方利益方面做得如何?
 好 一般 有待提高
5. 您對普星能量可持續發展管理的意見和建議：

如果方便，請留下您的聯繫方式：

姓名：

職業：

工作單位：

電郵地址：

聯繫電話：

聯繫地址：

郵編：

感謝您的回饋，我們將充分考慮您的意見和建議，並承諾妥善保管您的信息。



普星能量有限公司

PUXING ENERGY LIMITED

40/F., Dah Sing Financial Centre
248 Queen's Road East, Wanchai, Hong Kong
香港灣仔皇后大道東248號
大新金融中心40樓

www.puxing-energy.com