



# 北京健康(控股)有限公司

## Beijing Health ( Holdings ) Limited

Incorporated in the Cayman Islands with limited liability  
於開曼群島註冊成立之有限公司

Stock Code 股份代號 : 2389



# 2025

Environmental, Social and Governance Report  
環境、社會及管治報告

# CONTENTS

## 目錄

- 3 DEFINITION**  
釋義
- 4 ABOUT THIS REPORT**  
關於本報告
- 4 REPORTING STANDARD  
報告準則
  - 4 REPORTING PERIOD AND SCOPE  
報告期間及範圍
  - 6 REPORTING PRINCIPLES  
匯報原則
  - 6 REPORT VERSION AND ACCESS  
報告版本及獲取
  - 7 STAKEHOLDER OPINIONS  
持份者意見
- 8 ABOUT BEIJING HEALTH**  
關於北京健康
- 8 DEVELOPMENT CONCEPT OF THE GROUP  
本集團發展理念
  - 8 THE GROUP'S CORPORATE CULTURE AND VALUES  
本集團企業文化及價值觀
  - 9 BUSINESS OVERVIEW  
業務概覽
  - 10 MAJOR CERTIFICATIONS OF THE GROUP  
本集團主要認證
  - 10 ENVIRONMENTAL CERTIFICATIONS  
環保認證
  - 13 PRODUCT AND SERVICE QUALITY CERTIFICATIONS  
產品及服務質量認證
  - 15 THE GROUP'S AWARDS AND RECOGNITIONS  
本集團獎項及認可
- 16 SUSTAINABLE DEVELOPMENT OF BEIJING HEALTH**  
北京健康的可持續發展
- 17 SUSTAINABLE DEVELOPMENT GOVERNANCE  
可持續發展管治
  - 19 STAKEHOLDER ENGAGEMENT  
持份者參與
  - 20 MATERIALITY ANALYSIS  
重要性分析
  - 22 MATERIALITY ISSUES DURING THE REPORTING PERIOD  
報告期內重要性議題
- 23 DEDICATED TO PRODUCT QUALITY AND SAFETY**  
專心致志 • 產品質量與安全
- 23 PRODUCT RESPONSIBILITY  
產品責任
  - 23 SERVICE QUALITY – GERIATRIC CARE SERVICES  
服務質量 – 養老服務
  - 30 PRODUCT QUALITY – VISSAM PROSPERITY  
產品質量 – 北京偉森
  - 32 INTELLECTUAL PROPERTY  
知識產權
  - 32 ADVERTISEMENT AND LABELLING  
廣告及標籤
  - 32 CUSTOMER PRIVACY AND CYBERSECURITY  
客戶私隱及網絡安全
- 34 UPHOLDING PROBITY AND INTEGRITY ON OPERATION**  
恪守誠信 • 廉潔經營
- 34 ANTI-CORRUPTION  
反貪污
  - 35 WHISTLEBLOWING POLICY  
舉報政策
  - 35 ANTI-CORRUPTION TRAINING  
反貪污培訓
- 36 MUTUAL BENEFIT AND WIN-WIN ON GREEN PROCUREMENT**  
互利共贏 • 綠色採購
- 36 SUPPLY CHAIN MANAGEMENT  
供應鏈管理
  - 38 GREEN PROCUREMENT  
綠色採購
- 39 PEOPLE-ORIENTED ON EMPLOYEE GROWTH AND DEVELOPMENT**  
以人為本 • 員工成長與發展
- 39 EMPLOYMENT  
僱傭
  - 40 STAFF OVERVIEW  
員工概覽
  - 43 RECRUITMENT AND PROMOTION  
招聘及晉升
  - 43 EQUAL OPPORTUNITY AND ANTI-DISCRIMINATION  
平等機會及反歧視
  - 44 STAFF RIGHTS AND BENEFITS  
員工權益及福利
  - 46 HEALTH AND SAFETY  
健康與安全
  - 48 TRAINING AND DEVELOPMENT  
培訓及發展
  - 52 GERIATRIC CARE BUSINESS TRAINING  
養老業務培訓
  - 53 LABOR STANDARDS  
勞工準則



# CONTENTS

## 目錄

### 55 COMMITMENT TO ENVIRONMENTAL PROTECTION ON ENERGY CONSERVATION AND EMISSION REDUCTION

#### 環保承諾 • 節能減排

- 56 EMISSIONS  
排放物
  - 56 AIR AND GREENHOUSE GASES EMISSIONS  
廢氣及溫室氣體排放
  - 57 DISPOSAL OF HAZARDOUS AND NON-HAZARDOUS WASTE  
有害及無害廢棄物處理
  - 58 SEWAGE DISCHARGE  
污水排放
- 59 USE OF RESOURCES  
資源使用
  - 59 ENERGY  
能源
  - 60 WATER  
用水
- 61 ENVIRONMENT AND NATURAL RESOURCES  
環境及天然資源
  - 61 GREEN PRODUCTS AND CERTIFICATIONS  
綠色產品及認證
  - 62 USE OF GREEN AND ECO-FRIENDLY MATERIALS TO MEET THE NEEDS OF CLEANING  
採用綠色環保材料迎合清潔需求
  - 62 PROMOTION OF CARBON REDUCTION PROJECTS  
推動碳減排項目
- 63 CLIMATE CHANGE  
氣候變化
  - 63 GOVERNANCE  
管治
  - 64 STRATEGY  
策略
  - 72 RISK ASSESSMENT  
風險管理
  - 73 METRICS AND TARGETS  
指標及目標

### 75 CARE FOR THE SOCIETY WITH PASSION FOR PUBLIC WELFARE

#### 心繫社會 • 熱心公益

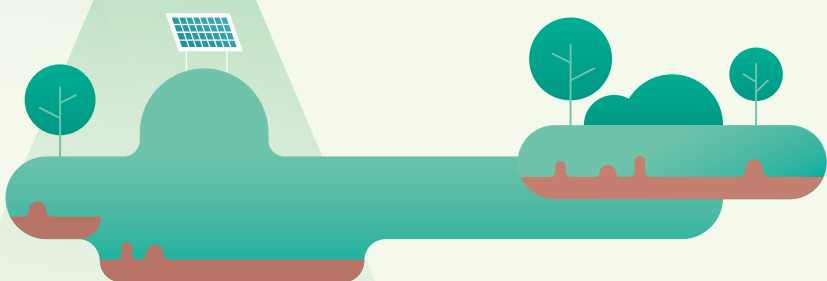
- 75 COMMUNITY INVESTMENT  
社區投資
  - 76 WUHU FULING GOLDEN SUN GERIATRIC CARE CENTER "SENIORS' MONTH"  
蕪湖福齡金太陽長者照顧中心「敬老月」
  - 76 VISSAM PROSPERITY "CHUNG YEUNG FESTIVAL" ACTION  
北京偉森「重陽敬老」行動
  - 77 SPONSORSHIP OF THE "CHILL ESG CONCERT" ENVIRONMENTAL MUSIC CONCERT  
贊助「Chill ESG Concert」環保音樂會

### 79 APPENDIX A: HKEX ENVIRONMENTAL, SOCIAL AND GOVERNANCE REPORTING CODE CONTENT INDEX

附錄一：聯交所《環境、社會及管治報告守則》內容索引

### 89 APPENDIX B: CLIMATE-RELATED DISCLOSURES INDEX

附錄二：氣候相關披露索引





# DEFINITION

## 釋義

“Beijing Health” or “Company” 「北京健康」或「本公司」	means 指	Beijing Health (Holdings) Limited (a company incorporated in the Cayman Islands with limited liability), whose Shares are listed on the main board of the Stock Exchange (stock code: 2389); 北京健康(控股)有限公司(一間於開曼群島註冊成立之有限公司)·其股份在聯交所主板上市(股份代號:2389);
“Board” 「董事會」	means 指	the board of Directors of the Company; 本公司董事會;
“Chinese Mainland” or “PRC” 「中國內地」	means 指	the People’s Republic of China, and for the purpose of geographical reference in this Report, excluding the Hong Kong Special Administrative Region, the Macau Special Administrative Region and the Taiwan Region of China; 中華人民共和國·就本報告地理位置參考而言·並不包括中國香港特別行政區、澳門特別行政區及台灣地區;
“Code” 「守則」	means 指	Environmental, Social and Governance Reporting Code under Appendix C2 to the Rules Governing the Listing of Securities on the Stock Exchange; 聯交所證券上市規則附錄C2所載之《環境、社會及管治報告守則》;
“Director(s)” 「董事」	means 指	the directors of the Company; 本公司董事;
“ESG” 「ESG」	means 指	Environmental, Social and Governance; 環境、社會及管治;
“Group” or “we” 「本集團」或「我們」	means 指	the Company together with its subsidiaries; 本公司及其附屬公司;
“Hong Kong” 「香港」	means 指	the Hong Kong Special Administrative Region of the People’s Republic of China; 中華人民共和國香港特別行政區;
“KPI” 「KPI」	means 指	Key Performance Indicator; 關鍵績效指標;
“Reporting Period” or “Year” 「報告期」或「本年度」	means 指	1 January 2025 to 31 December 2025; 2025年1月1日至2025年12月31日;
“Stock Exchange” 「聯交所」	means 指	The Stock Exchange of Hong Kong Limited; 香港聯合交易所有限公司;
“Subsidiary” 「附屬公司」	means 指	has the meaning ascribed to it in the Listing Rules; and 具上市規則所賦予的涵義;以及
“%” 「%」	means 指	percent. 百分比。



# ABOUT THIS REPORT

## 關於本報告

The Group hereby presents its tenth Environmental, Social and Governance Report (the “ Report ”) to its stakeholders, which sets forth the sustainable development approach, policies and performance of the medical and health industry and geriatric business of the Group during the Reporting Period, as well as ESG-related challenges and opportunities.

### REPORTING STANDARD

This Report has been prepared in accordance with the Environmental, Social and Governance Reporting Code under Appendix C2 to the Rules Governing the Listing of Securities of the Stock Exchange of Hong Kong Limited in light of the actual situation of the Group. The information and data cited in this Report are derived from the Group’s official documents, statistical reports and financial reports.

### REPORTING PERIOD AND SCOPE

This Report covers the period from 1 January 2025 to 31 December 2025. The reporting scope was revised to exclude Shanghai Xiangyong Enterprise Management Consulting Co., Ltd. and to include Wuxi Beikang Hongtai Geriatric Services Limited and Changzhou Qiyue Hongtai Geriatric Service Co Ltd..

Wuxi Beikang Hongtai Geriatric Services Limited operates three elderly care homes within the scope of this Report, namely:

- Wuxi Liangxi District Guangyi Geriatric Care Center\* ( “ Wuxi Guangyi Geriatric Care Center”);
- Wuxi Liangxi District Wuhe Geriatric Care Home\* ( “ Wuxi Wuhe Geriatric Care Home”); and
- Wuxi Liangxi District Huifeng Elderly Care Home\* (“Wuxi Huifeng Elderly Care Home”).

Changzhou Qiyue Hongtai Health Care Services Co., Ltd. similarly operates two elderly care homes within the scope of this Report, namely:

- Changzhou Xinbei District Xuejia Aixin Nursing Home\* (“Changzhou Xuejia Aixin Nursing Home”); and
- Changzhou Xinbei District Beikang Aixin Nursing Home\* (“Changzhou Beikang Aixin Nursing Home”).

All five elderly care homes mentioned above are operated as private non-profit-making entities. In accordance with Hong Kong Generally Accepted Accounting Principles, these private non-profit-making entities are not included in the scope of the Group’s consolidated financial statements. Such exclusion does not affect the Group’s daily operation and management, service quality control, operational scale statistics, internal assessment of operating performance in respect of these elderly care homes, nor does it affect the information disclosure in this report.

\* For identification purposes only

本集團向持份者提呈第十份環境、社會及管治報告(「本報告」)，闡述本集團的醫療健康產業及養老業務於報告期內的可持續發展方針、政策及表現，以及與ESG相關的挑戰與機遇。

### 報告準則

本報告乃遵循香港聯合交易所有限公司證券上市規則附錄C2《環境、社會及管治報告守則》及結合本集團實際情況編製而成。本報告所引用的資料及數據源自本集團的正式文件、統計報告與財務報告。

### 報告期間及範圍

本報告的報告期間為2025年1月1日至2025年12月31日。本年度的報告範圍將去除上海祥永企業管理諮詢有限公司，並新增無錫北康宏泰養老服務有限公司及常州啟悅宏泰養老服務有限公司。

無錫北康宏泰養老服務有限公司於本報告範圍內，營運三家養老院，分別為：

- 無錫市梁溪區廣益養老中心\*(「無錫廣益養老中心」)；
- 無錫市梁溪區五河養老院\*(「無錫五河養老院」)；及
- 無錫市梁溪區惠楓怡康院\*(「無錫惠楓怡康院」)。

常州啟悅宏泰養老服務有限公司於本報告範圍內，同樣營運兩家養老院，分別為：

- 常州市新北區薛家鎮愛心護理院\*(「常州薛家鎮愛心護理院」)；及
- 常州市新北區北康愛心護理院\*(「常州北康愛心護理院」)。

上述五家養老院均以民辦非營利性質運營。根據香港一般公認會計原則，該等民辦非營利機構不計入本集團合併財務報表範圍，惟不影響本集團對該等養老院的日常營運管理、服務質量管控、營運規模統計及經營效益內部評估與本報告的信息匯報。

\* 僅供識別用途



## ABOUT THIS REPORT •

### 關於本報告

The Reporting Scope covers Beijing Health (Holdings) Limited and the following subsidiaries:

1. Beijing Vissam Prosperity Furniture Limited\* (“Vissam Prosperity”);
2. Beijing Inland Port International Logistics Co., Ltd.\* (“Beijing Inland Port”);
3. Beijing Yicheng Enterprise Management Co., Ltd.\* (“Beijing Yicheng”);
4. Beijing Zhong Cheng Hu Lian Health Technology Co., Ltd.\* (“Beijing Zhong Cheng”);
5. Shanghai Chongyuan Investment Management Company Limited\* (“Shanghai Chongyuan”);
6. Shanghai Qiyue Health Technology Co., Ltd.\* (“Shanghai Qiyue”);
7. Wuhu Beikang Health Golden Sun Health Care Service Company Limited\* (“Wuhu Golden Sun”);
8. Wuhu Fuling Health Golden Sun Geriatric Care Center\* (“Wuhu Fuling Golden Sun Geriatric Care Center”);
9. Wuxi Beikang Hongtai Geriatric Services Limited\* (“Wuxi Beikang Hongtai”); and
10. Changzhou Qiyue Hongtai Geriatric Service Co Ltd.\* (“Changzhou Qiyue Hongtai”).

\* For identification purposes only

報告範圍涵蓋北京健康(控股)有限公司及下列附屬公司：

1. 北京偉森盛業傢俱有限公司\*(「北京偉森」)；
2. 北京陸港國際物流有限公司\*(「北京陸港」)；
3. 北京毅成企業管理有限公司\*(「北京毅成」)；
4. 北京眾成互聯健康科技有限公司\*(「北京眾成」)；
5. 上海翀遠投資管理有限公司\*(「上海翀遠」)；
6. 上海啟悅健康科技有限公司\*(「上海啟悅」)；
7. 蕪湖市北康金太陽健康養老服務有限公司\*(「蕪湖金太陽」)；
8. 蕪湖市福齡金太陽長者照顧中心(「蕪湖福齡金太陽長者照顧中心」)；
9. 無錫北康宏泰養老服務有限公司\*(「無錫北康宏泰」)；及
10. 常州啟悅宏泰養老服務有限公司\*(「常州啟悅宏泰」)。

\* 僅供識別用途



## ABOUT THIS REPORT •

### 關於本報告

#### REPORTING PRINCIPLES

This Report has been prepared in strict accordance with the three principles, namely materiality, quantitative and consistency, of the “ Environmental, Social and Governance Reporting Code ” set out in Appendix C2 to the Rules Governing the Listing of Securities on the Stock Exchange.

#### 匯報原則

本報告的編製嚴格遵守聯交所《證券上市規則》附錄C2《環境、社會及管治報告守則》的三項匯報原則：重要性、量化及一致性。

Reporting Principles 報告原則	Response of the Group 本集團回應
<b>Materiality</b> 重要性	In this Report, the Group focuses on disclosing ESG issues that have significant impacts on its stakeholders. We continue to successfully identify important ESG issues through communication with stakeholders and materiality assessment. For details of the materiality assessment process and results, please refer to the chapter “Materiality Analysis”. 本集團於本報告中重點披露對其持份者產生重大影響的環境、社會及管治議題。我們持續通過與持份者溝通及重要性評估，成功識別重要ESG議題。對於詳細的重要性評估過程及結果，請參閱「重要性分析」章節。
<b>Quantitative</b> 量化	The Group discloses KPIs in quantitative form where practicable. In this Report, we set out the information on the standards, methods, assumptions and/or calculation tools used for the quantitative KPIs, and the sources of the conversion factors used therein. The calculation of KPIs mainly draws reference from the Stock Exchange’s “How to Prepare an ESG Report – Appendix 2: Reporting Guidance on Environmental KPIs” and “How to Prepare an ESG Report – Appendix 3: Reporting Guidance on Social KPIs”. 本集團在可行的情況下以量化形式披露KPIs。我們於本報告中列明量化KPIs所採用的標準、方法、假設及／或計算工具的資料，以及當中所使用的轉換因素的來源。KPIs的計算主要參照聯交所《如何編備環境、社會及管治報告》附錄二《環境關鍵績效指標匯報指引》及附錄三《社會關鍵績效指標匯報指引》。
<b>Consistency</b> 一致性	The Group adopts the statistical methods and KPIs that are consistent with those used in previous reporting periods to ensure the comparability of the environmental and social performance. If changes are made to the methodology, we will specify accordingly in this Report for stakeholders’ reference. 本集團已採取與過往報告期一致的統計方法及KPIs，確保環境及社會績效的可比性。若方法有所改變，我們將於本報告中註明，以供持份者參考。

#### REPORT VERSION AND ACCESS

This Report is available in Chinese and English versions. In case of any discrepancy, the Chinese version shall prevail. This Report is published in PDF electronic form. The PDF electronic version can be downloaded from the official website of the Company (<http://www.bjhl.com.hk>) and the website of the Stock Exchange (<http://www.hkexnews.hk>).

#### 報告版本及獲取

本報告具備中文及英文版本。若報告內容有歧異，請以中文版本為準。本報告以PDF電子版本形式發佈。PDF電子版本可在本公司官方網站(<http://www.bjhl.com.hk>)及聯交所網站(<http://www.hkexnews.hk>)下載。



## ABOUT THIS REPORT •

### 關於本報告

#### STAKEHOLDER OPINIONS

The Group attaches great importance to the opinions of stakeholders. If you have any comments on this Report or the sustainable development strategies and performance of the Group, please contact us through the following contact methods:

Address: Unit 2704, 27/F, 909 Cheung Sha Wan Road, Cheung Sha Wan, Kowloon, Hong Kong  
Email : [enquiry@bjhl.com.hk](mailto:enquiry@bjhl.com.hk)

#### 持份者意見

本集團高度重視持份者的意見。如閣下對本報告或我們的可持續發展策略及表現有任何意見，歡迎透過以下方式與我們聯繫：

地址：香港九龍長沙灣長沙灣道909號27樓2704室  
電郵：[enquiry@bjhl.com.hk](mailto:enquiry@bjhl.com.hk)



# ABOUT BEIJING HEALTH

## 關於北京健康

### DEVELOPMENT CONCEPT OF THE GROUP

### 本集團發展理念

**OUR CULTURE**  
我們的文化



Integrity, Innovation,  
Focus, Win-win  
誠信、創新、專注、共贏

**OUR MISSION**  
我們的使命



Realize the dream of  
health restoration  
讓健康回歸

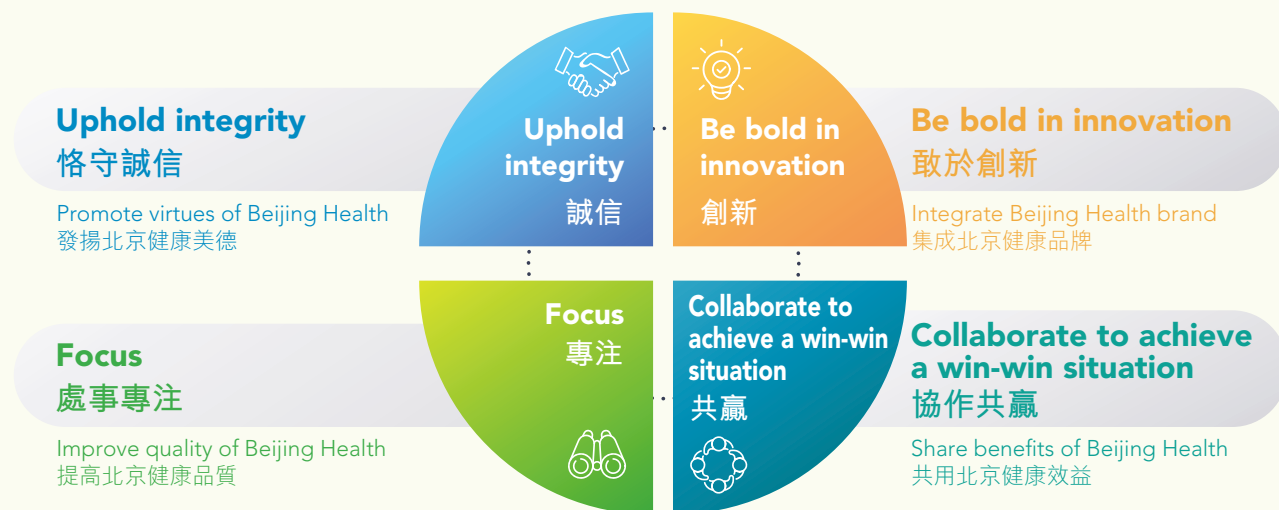
**OUR VISION**  
我們的願景



Becoming a healthy and  
happy life creator  
健康、快樂的創造者

### THE GROUP'S CORPORATE CULTURE AND VALUES

### 本集團企業文化及價值觀



The Group is committed to integrating the four values above into the Group's vision, mission, policies and business strategies, which also serve as the primary guide for employees' conduct and behavior, as well as business activities.

本集團致力於將以上四大價值觀融入本集團願景、使命、政策及業務策略中，並作為僱員操守及行為，以及業務活動的主要指引。



## ABOUT BEIJING HEALTH •

### 關於北京健康

#### BUSINESS OVERVIEW

Beijing Health (Holdings) Limited (stock code: 2389.HK) was established in 2001 as a company listed on the main board of the Stock Exchange of Hong Kong, and its businesses mainly consist of geriatric care, healthcare industrial parks and the sale of medical and geriatric products. Adhering to its corporate mission to “restore health, wish for all stakeholders to live healthily, and provide health living solutions across multiple scenarios”, Beijing Health actively establishes a comprehensive industrial chain for aging care and is strongly committed to becoming a leader in the geriatric care and healthcare industry in the PRC, as well as the preferred partner for customers and other stakeholders. The Group has firmly focused on the development of the geriatric care business through integration of medical and geriatric care, with the support of related industries, such as geriatric care-related furniture and comprehensive hospitals, to achieve synergy among various business segments.

#### Geriatric Care Service

Riding on the trend of an ageing population in Chinese Mainland and the rigid market demand, we adhere to the strategy of focusing on integrated medical and geriatric care, utilizing medical measures to assist the development of geriatric care and utilizing geriatric care to facilitate medical development, dedicated to creating professional, chain-operated geriatric care institutions with warmth and compassion.

#### Operation of Healthcare Industrial Parks

Pursuant to the policies and directions of the national and local governments on land planning adjustment, we mainly acquire high-quality land in the first-tier cities such as Beijing and Shanghai. Through transformation and upgrade, we introduce advanced industrial development concepts to fulfil the demand of the government and customers and develop new business formats by constructing and operating healthcare industrial parks.

#### Sale of Medical and Geriatric Products

As an advocate and leader of health furniture in the industry, Vissam Prosperity has been involved in the research and development and design of high-end medical and geriatric furniture for years and strives to build an innovative service enterprise integrating five key sectors, namely “health geriatric care, medical care, education, business office, internet+”, providing innovative elderly-friendly products and furniture solutions with full life cycle integration for well-known domestic and international geriatric care institutions.

#### 業務概覽

北京健康(控股)有限公司於2001年成立並在香港聯合交易所主板上市(股票代號:2389.HK),其業務主要涵蓋養老、健康產業園及醫養產品銷售。北京健康秉持「讓健康回歸,願各持份者生活健康,提供多場景之健康生活配套」的企業宗旨,積極佈局老齡化全產業鏈,致力成為中國養老及健康產業的翹楚,以及客戶和其他持份者的首選夥伴。本集團長期堅持以醫養結合模式作為養老業務的核心發展方向,並以適老化傢俬、綜合性醫院等關聯產業作為輔助,實現各業務板塊的協同效應。

#### 養老服務

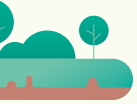
我們抓緊中國內地老齡化社會趨勢和市場剛性需求,堅持走醫養結合道路,以醫助養、以養興醫,致力於打造專業化、連鎖化、有溫度的養老機構。

#### 健康產業園營運

我們根據國家及各地方政府對土地規劃調整的政策及方向,主要在北京、上海等一線城市獲取優質土地。通過轉型升級,我們引入先進的產業建設理念,以全面滿足政府及市場用戶的需求,重點建設健康產業園區等新型業態。

#### 醫養產品銷售

北京偉森作為行業健康傢俱的宣導者和領軍者,多年來涉足高端醫養傢俱的研發設計領域,著力打造以「健康養老、醫療、教育、商務辦公、互聯網+」五位於一體的創新型服務企業,為國內外知名養老機構提供創新型適老化產品及全生命周期一體化的傢俱解決方案。



MAJOR CERTIFICATIONS OF THE GROUP  
Environmental Certifications

本集團主要認證  
環保認證



ISO 14001:2015  
Environmental Management  
Systems Certification  
ISO 14001:2015  
環境管理體系認證



China Environmental  
Labelling Product Certification  
– Steel and Wood Furniture  
中國環境標誌產品  
認證 – 鋼木傢俱



GB/T 28952-2018 Forest Certification in China (Chain of Custody)  
GB/T 28952-2018中國森林認證(產銷監管鏈)





# ABOUT BEIJING HEALTH

## 關於北京健康



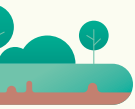
GB/T 35607-2017 China Green Product Certification – Chairs, Comprehensive Wood Furniture, Metal Furniture  
GB/T 35607-2017中國綠色產品認證—椅類、綜合木傢俱類、金屬傢俱類



CEC-7005CVP-A/1 Low VOCs Furniture Product Certification – Wooden Furniture  
CEC-7005CVP-A/1低VOCs傢俱產品認證—木傢俱類



CEC-7016CVP-A/2 Furniture Product EcoGuard Certification – Wooden Furniture  
CEC-7016CVP-A/2傢俱產品環保衛士認證—木傢俱類



CEC-7011GSC-A/1  
Green Supply Chain  
5-star Rating  
CEC-7011GSC-A/1  
綠色供應鏈5星級評價



CEC-7046CVP-A/0 Government Green  
Procurement Standard Certification –  
Artificial Board Furniture  
CEC-7046CVP-A/0  
政府綠色採購需求標準認證  
—人造板類傢俱



GB 18584-2001 Furniture Hazardous Substance Limit Certification – Chairs, Comprehensive Wood Furniture, Metal Furniture  
GB 18584-2001傢俱有害物質限量認證 – 椅類、綜合木傢俱類、金屬傢俱類



# ABOUT BEIJING HEALTH

## 關於北京健康



CQC China Environmental Certification – Metal Teaching Furniture, Metal Apartment Furniture  
CQC中國環保認證—金屬教學傢俱，金屬公寓傢俱



China Forest Certification Certificate (PEFC)  
中國森林認證證書(PEFC)

### Product and Service Quality Certifications

### 產品及服務質量認證



ISO 9001:2015  
Quality Management Systems  
Certification  
ISO 9001:2015  
質量管理體系認證



ISO 13485:2016  
Medical Devices – Quality  
Management Systems Certification  
ISO 13485:2016  
醫療器械質量管理體系認證



GB/T 19022-2023, ISO10012:2003  
Enterprise Credit Rating Certificate –  
AAA  
GB/T 19022-2023,  
ISO 10012:2003  
測量管理體系認證—AAA級





THE GROUP'S AWARDS AND RECOGNITIONS

本集團獎項及認可



Top Ten Brands of 2025 Office Furniture  
2025辦公傢俱十大品牌



Top Ten Brands of 2025 Elderly-friendly Furniture  
2025適老傢俱十大品牌



Top Ten Leading Brands of 2025 School Furniture  
2025學校傢俱十大領軍品牌



Top Ten Brands of 2025 Hospital Furniture  
2025醫院傢俱十大品牌



Enterprise Credit Rating Certificate  
– AAA Credit Enterprise  
企業信用等級證書  
– AAA級信用企業



# SUSTAINABLE DEVELOPMENT OF BEIJING HEALTH

## 北京健康的可持續發展

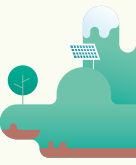
Following national relevant policy directions, the Group aligns with the development direction of improving the social security system, deepening the reform of the medical and health system, and strengthening the support and service system for population development, in order to advance its related corporate social responsibility work. Among them, population aging and the silver economy will be important links in China's population development and service system. During the Reporting Period, the State Council issued the "Opinions on Promoting High-Quality Development of Service Consumption", advocating for the vigorous development of the silver economy, promoting the development of the smart health and geriatric care industry, supporting financial institutions to optimize risk management, actively providing financial products and services suitable for the project funding needs of inclusive geriatric care and childcare institutions, accelerating the development of a multi-tiered pension insurance system, and continuously improving the support system for elderly health.

The Group firmly follows and responds to national policies, seizes the favorable external environment and opportunities for geriatric care, medical care and health in the Chinese Mainland, and continues to fulfill its corporate social responsibility. It remains committed to promoting sustainable development of the environment and society through its own comprehensive health industry chain resources. During the Reporting Period, we continued to implement sustainable development principles and promote relevant policies from the following six dimensions. Vissam Prosperity has signed a social responsibility commitment letter during the Reporting Period, demonstrating its termination and commitment to promote sustainable development.

依循國家相關政策指引，本集團緊跟完善社會保障體系、深化醫藥衛生體制改革、健全人口發展支援與服務體系的發展方向，推進相關社會責任工作。其中人口老齡化和銀髮經濟將是中國人口發展和服務體系的重要環節。國務院於2024發佈《關於促進服務消費高品質發展的意見》，主張大力發展銀髮經濟，促進智慧健康養老產業發展，支持金融機構優化風險管理，積極提供適合普惠性養老託育機構項目資金需求特點的金融產品和服務，加快發展多層次養老保險體系，持續完善老年健康的支撐體系。

本集團堅定跟隨及響應國家政策，抓緊中國內地養老、醫療和健康的良好外部環境及機會，並持續履行企業社會責任，致力透過自身的大健康產業鏈資源，推動環境和社會的可持續發展。報告期內，我們繼續從以下六個維度中實踐可持續發展方針及推動相關政策。北京偉森已於報告期內簽署社會責任承諾書，彰顯其推動可持續發展的決心及承諾。





## SUSTAINABLE DEVELOPMENT OF BEIJING HEALTH •

### 北京健康的可持續發展

#### SUSTAINABLE DEVELOPMENT GOVERNANCE

The Group has established a sound and sustainable development framework and management procedures, and adopts a top-down management approach to ensure that its sustainable development strategies are effectively implemented and embedded across all levels of its business operations. As the highest-level decision-making body, the Board strictly monitors the Group's environmental, social and governance risk management activities, climate-related risks and opportunities and remains ultimately responsible for overseeing the Group's material risks. Apart from taking initiatives in formulating management policies and identifying the environmental, social and governance risk issues that are crucial to the Group, the Board also collects internal and external data and stakeholders' opinions in various ways, including but not limited to relevant reference cases, information from other relevant domestic and overseas companies, historical data and future forecasts, so as to formulate measures to minimize risks.

The Board has established an ESG Working Group, which is responsible for promoting and assisting in the implementation of ESG-related matters, climate-related initiatives and strategies, and reports to the Board from time to time. The Board will continue to follow up with the situation and review the issues involved after receiving advice from the ESG Working Group in order to continue to move towards the objective of sustainable development.

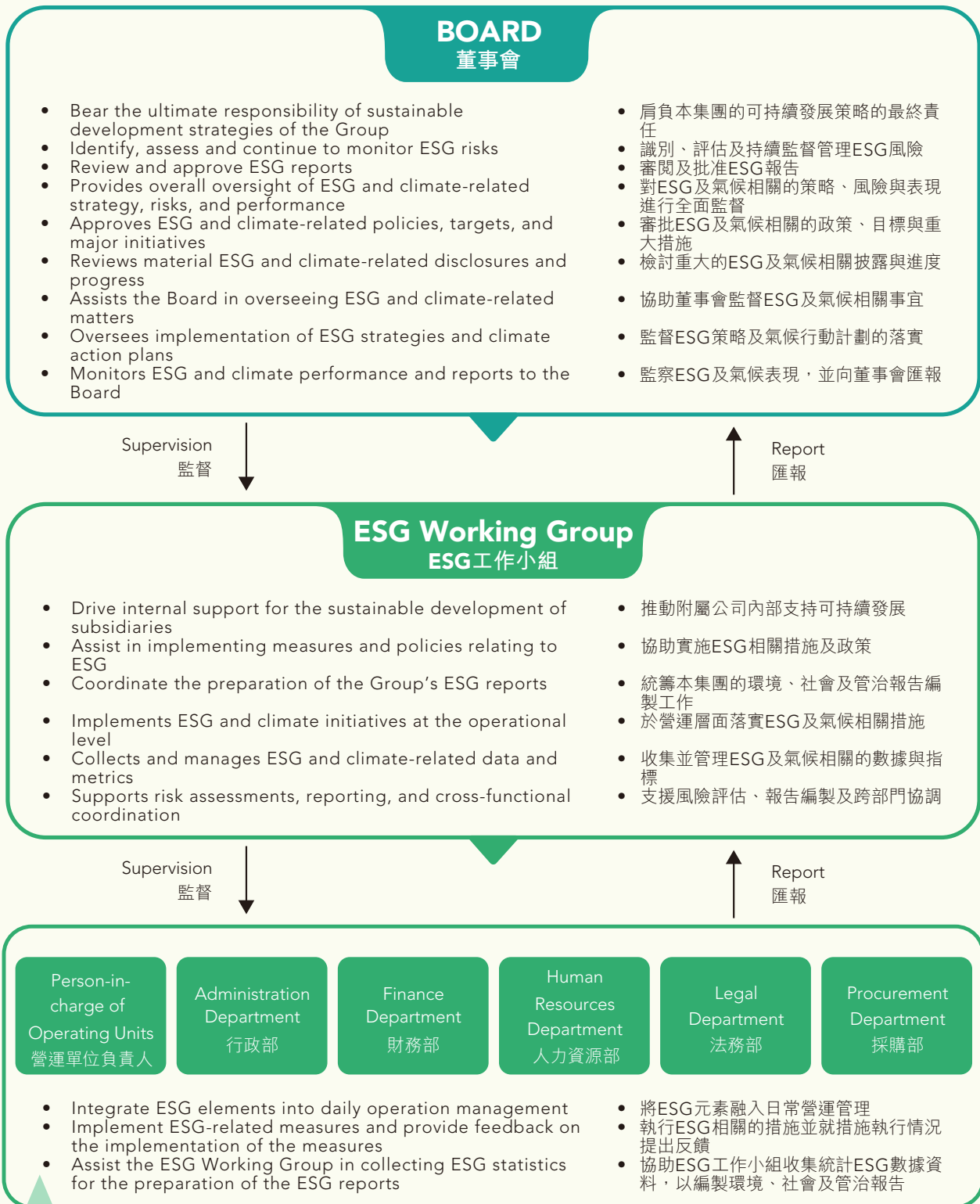
Meanwhile, the Board also appointed Riskory Consultancy Limited as its Independent Sustainability Consultant to provide consulting services on ESG and carbon neutrality.

#### 可持續發展管治

本集團已建立完善的可持續發展架構及管理流程，並採用由高層主導的管理模式，確保可持續發展策略能夠有效落實並貫徹至各業務層面。作為最高級別的決策單位，董事會嚴格監督本集團環境、社會及管治風險管理活動、與氣候相關的風險與機遇及對監督本集團的實質風險負有最終責任。董事會不但積極制定管理方針，識別對本集團重要的環境、社會及管治風險事宜，更通過不同方式來收集內外部數據及持份者意見，以制定減低風險的措施。當中包括但不限於相關案例、國內外其他相關公司的資料、歷史數據及未來預測。

董事會下設ESG工作小組。該小組負責推動及協助實施ESG相關事宜、與氣候相關的措施及策略，並不定期向董事會匯報。董事會在聽取意見後會持續跟進情況，檢討相關事宜，從而持續向可持續發展的目標邁進。

同時，本集團已委任Riskory Consultancy Limited為獨立可持續發展顧問，提供ESG及碳中和方面的諮詢服務。





# SUSTAINABLE DEVELOPMENT OF BEIJING HEALTH •

## 北京健康的可持續發展

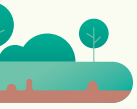
### STAKEHOLDER ENGAGEMENT

The Group is committed to creating long-term value for all stakeholders. We actively seek to understand the opinions and demands of our stakeholders and continue to improve the Group's sustainable development performance. During the Reporting Period, we continued to maintain close and good communication with key stakeholders such as employees, suppliers, shareholders, government, customers and the community through multiple formal and informal channels to collect their views and determine major directions and policies for sustainable development.

### 持份者參與

本集團致力為所有持份者創造長遠的價值。我們積極了解持份者的意見及訴求，持續提升本集團的可持續發展表現。報告期內，我們繼續通過多個正式及非正式的渠道與員工、供應商、股東、政府、客戶及社區等關鍵持份者保持密切溝通及良好關係，收集他們的觀點，以及確定可持續發展的重大方向及政策。

	<b>Employees</b> 員工	<ul style="list-style-type: none"> <li>• Social media</li> <li>• Regular meetings</li> <li>• Internal communication system</li> <li>• Performance appraisals</li> <li>• Annual meeting</li> </ul>	<ul style="list-style-type: none"> <li>• 社交媒體</li> <li>• 定期會議</li> <li>• 內部通訊系統</li> <li>• 績效評估</li> <li>• 年會</li> </ul>
	<b>Customers</b> 客戶	<ul style="list-style-type: none"> <li>• The Group's website</li> <li>• Mass media</li> <li>• Social media</li> <li>• Direct communication</li> <li>• Customer service hotline</li> <li>• Customer satisfaction surveys</li> </ul>	<ul style="list-style-type: none"> <li>• 本集團網站</li> <li>• 大眾傳媒</li> <li>• 社交媒體</li> <li>• 直接溝通</li> <li>• 客戶服務熱線</li> <li>• 客戶滿意度調查</li> </ul>
	<b>Investors and Shareholders</b> 投資者及股東	<ul style="list-style-type: none"> <li>• Financial reports</li> <li>• Investor briefing</li> <li>• The Group's website</li> <li>• Investor summit</li> <li>• Direct communication</li> <li>• Annual general meeting</li> </ul>	<ul style="list-style-type: none"> <li>• 財務報告</li> <li>• 投資者簡報</li> <li>• 本集團網站</li> <li>• 投資者峰會</li> <li>• 直接溝通</li> <li>• 股東週年大會</li> </ul>
	<b>Suppliers</b> 供應商	<ul style="list-style-type: none"> <li>• Social media</li> <li>• Regular meetings</li> <li>• Internal communication system</li> <li>• Supplier assessment</li> <li>• Annual meeting</li> </ul>	<ul style="list-style-type: none"> <li>• 社交媒體</li> <li>• 定期會議</li> <li>• 內部通訊系統</li> <li>• 供應商評審</li> <li>• 年會</li> </ul>
	<b>Government and Regulatory Authorities</b> 政府及監管機構	<ul style="list-style-type: none"> <li>• Direct communication</li> <li>• Forums</li> <li>• Annual meeting</li> <li>• Seminars and workshops</li> </ul>	<ul style="list-style-type: none"> <li>• 直接溝通</li> <li>• 論壇</li> <li>• 年會</li> <li>• 研討會和工作坊</li> </ul>
	<b>Communities</b> 社區	<ul style="list-style-type: none"> <li>• The Group's website</li> <li>• Social media</li> <li>• Mass media</li> <li>• Direct communication</li> </ul>	<ul style="list-style-type: none"> <li>• 本集團網站</li> <li>• 社交媒體</li> <li>• 大眾傳媒</li> <li>• 直接溝通</li> </ul>



### MATERIALITY ANALYSIS

In order to effectively identify environmental, social and governance issues that have a significant impact on the Group, the Board reviewed the materiality issues identified in 2024 based on the opinions of internal and external stakeholders and the operating conditions and assessed the applicability of each materiality issue during the Year, so as to further ensure that our sustainable development is consistent with the demands and opinions of stakeholders and to identify ESG issues that have a significant impact on the Group more effectively. The procedures of this materiality assessment are as follows:

### 重要性分析

為有效地識別對本集團有重大影響的環境、社會及管治議題，董事會與內外部持份者保持良好的溝通，及時了解持份者的訴求和建議，並結合各持份者的意見及營運情況，回顧2024年度所識別的重要性議題，並評估各議題於本年度的適用程度，進一步確保本集團的持續發展工作與持份者的訴求及意見一致。是次重要性評估流程如下：



<b>Identification of Major Stakeholders</b> 識別重要持份者	<ul style="list-style-type: none"> <li>• The Group considers the following factors to determine whether there are changes in stakeholders during the Year:            本集團考慮以下因素來判斷本年度的持份者是否存在變化：           <ol style="list-style-type: none"> <li>i. whether there have been significant changes in the Group's major business and operating environment;                本集團的主要業務及經營環境是否存在重大變化；</li> <li>ii. whether there have been significant changes in the impact of stakeholders on the Group;                and                持份者對本集團的影響力是否存在重大變化；以及</li> <li>iii. whether there have been significant changes in the impact of the Group on stakeholders.                本集團對持份者的影響力是否存在重大變化。</li> </ol> </li> <li>• Taking the above considerations into account, we have effectively identified the major stakeholders. During the Reporting Period, the major stakeholders of the Group remain the same as in 2024.            綜合以上考慮，我們已有效識別重要持份者。本集團於報告期內的主要持份者與2024年保持一致。</li> </ul>
--	--



## SUSTAINABLE DEVELOPMENT OF BEIJING HEALTH •

### 北京健康的可持續發展

#### Review and Examination of the Materiality Issues 回顧及審視重要性議題

- Combining the expectations and opinions of major stakeholders and the degree of impact of different ESG issues on the Group, the Board reviewed the materiality issues identified in 2024 through an internal review and assessment and established the materiality issues for the Year.  
董事會綜合重要持份者的期望與意見，以及不同ESG議題對本集團的影響程度，透過內部檢討評估來回顧2024年度所識別的重要性議題，並確立本年度的重要性議題。
- The Board made reference to the following factors in addition to whether there have been significant changes in the degree of impact of ESG issues on the Group's operations and stakeholders:  
董事會除了根據ESG議題對本集團經營業務及持份者的影響程度是否存在重大變化之外，還參考以下因素：
  - i. The requirements of regulatory bodies;  
監管機構的要求；
  - ii. ESG materiality issues addressed in the Sustainability Accounting Standards Board (SASB) and MSCI ESG Industry Materiality Maps; and  
可持續發展會計準則委員會(SASB)及MSCI ESG行業重要性地圖中提及的ESG重要議題；以及
  - iii. ESG materiality issues identified by peer companies listed in Hong Kong.  
於香港上市的同業公司所識別的重要ESG議題。

#### Establishment of Materiality Issues 確立重要性議題

- After completing the review and evaluation, we have adjusted the list of materiality issues for the Year.  
在完成回顧及評估後，我們對本年度的重要性議題列表進行調整。
- 10 issues were classified as high materiality during the Year, namely Risks and Opportunities Associated with Climate Change, Occupational Safety and Health, Training and Development, Employee Relationships, Anti-fraud and Anti-corruption, Business Ethics, Quality and Safety of Products and Services, Customer Health and Safety, Customer Satisfaction and Data Security and Protection of Customer Privacy. We focus on the disclosure of these issues in this Report. 本年度有10個議題獲納入重要範疇，分別是氣候變化相關之風險及機遇、職業健康及安全、培訓及發展、僱傭關係、反舞弊腐敗、商業道德、產品及服務質素及安全、客戶健康與安全、客戶滿意度及數據安全及客戶私隱保障。我們於本報告中重點披露這些議題。



**MATERIALITY ISSUES DURING THE REPORTING PERIOD**

報告期內重要性議題

Environmental Protection and Green Operations 環境保護及綠色營運	Operating Practices 營運常規	Products and Services Responsibilities 產品及服務責任	Quality of Working Environment 工作環境質素	Community Contribution 社區貢獻
1. Greenhouse Gas Emissions 溫室氣體排放	9. Supply Chain Management 供應鏈管理	<b>14. Quality and Safety of Products and Services</b> 產品及服務質素及安全	20. Equal Opportunity, Diversity and Anti-discrimination 平等機會、多元化及反歧視	27. Participating or Organizing Voluntary Activities 參與或籌辦義工活動
2. Air Emissions 廢氣排放	10. Assessments of Supplier's Environmental and Social Performance 評估供應商的環境及社會表現	<b>15. Customer Health and Safety</b> 客戶健康與安全	<b>21. Employment Relationships</b> 僱傭關係	28. Charitable Donations 慈善捐贈
3. Electricity and Water Conservation 節約用電及用水	<b>11. Anti-fraud and Anti-corruption</b> 反舞弊腐敗	<b>16 Customer Satisfaction</b> 客戶滿意度	<b>22. Occupational Safety and Health</b> 職業健康及安全	
4. Effective Use of Resources 有效使用資源	12. Crisis or Emergency Management 危機或緊急事故管理	17. Complaint Handling 投訴處理	<b>23. Training and Development</b> 培訓及發展	
5. Hazardous Waste Treatment 有害廢棄物處理	<b>13. Business Ethics</b> 商業道德	<b>18. Data Security and Protection of Customer Privacy</b> 數據安全及客戶私隱保障	24. Child Labor and Forced Labor Prevention 防止出現童工及強制勞工	
6. Non-hazardous Waste Treatment 無害廢棄物處理		19. Advertising and Promotion 廣告與宣傳	25. Staff Benefits 員工福利	
7. Green Procurement 綠色採購			26. Intellectual Property Rights 知識產權	
<b>8. Risks and Opportunities Associated with Climate Change</b> 與氣候變化相關之風險及機遇				



# DEDICATED TO PRODUCT QUALITY AND SAFETY

## 專心致志 • 產品質量與安全

### PRODUCT RESPONSIBILITY

The Group has always been committed to delivering exceptional services and superior products, striving to surpass the expectations of its customers. We attach great importance to product quality and are dedicated to the best quality management, striving to provide customers with the best services and products in any type of business, ensuring the quality and safety of our products, and safeguarding public health. The Group has established strict management systems and standards in the areas of health and safety, privacy matters, intellectual property, as well as advertisement and labelling of its products and services.

The Group strictly complies with relevant laws and regulations on products and services, including but not limited to the Medicinal Product Administration Law of the PRC. During the Reporting Period, the Group was not aware of any material violation of laws and regulations relating to health and safety, advertisement, labelling and privacy matters relating to products and services provided and methods of redress that would have a significant impact on the Group.

### SERVICE QUALITY – GERIATRIC CARE SERVICES

We are committed to our business vision of “ building geriatric care home without walls, being a century-old geriatric care service provider”. Backed by comprehensive service planning and a professional team, the Group delivers high-quality, well-rounded, and attentive elderly care services, dedicated to ensuring that every elderly resident can enjoy a comfortable and fulfilling twilight years. In 2025, a number of the Group ’ s elderly care facilities received notable recognition: Wuxi Guangyi Geriatric Care Center was accredited as a “ Grade 3 ” elderly care institution in Wuxi, and Changzhou Xuejia Aixin Nursing Home was selected as a proposed commendation recipient of the national “Elderly-Respecting Civilised Unit ” honour, reflecting the Group ’ s professional standards and strong social recognition in the field of elderly care services.

To ensure that all employees are able to provide consistent and high-quality service and deliver superior products to our customers, we have established a comprehensive quality management process, adopting a rigorous scientific approach and stringent quality management standards to formulate detailed and clearly defined guidelines and specifications for each relevant nursing procedure. In addition, in order to maintain our consistent excellent services, we conduct monthly quality inspection and performance appraisal on geriatric care institutions under the Group, which include the environment, communication with customers, service attitude, condition of operating facilities and customer opinion. Relevant staff will rate each item and record areas for improvement to facilitate follow-up measures. In order to continuously improve the quality of our service, we provide the elderly with a service satisfaction questionnaire to understand the elderly ’ s opinion on the overall service quality.

### 產品責任

本集團始終以提供卓越服務與優質產品為宗旨，力求超越客戶期望。我們高度重視產品質量，專心致志將質量管理做到最好，務求在任何類型的業務中向客戶提供最好的服務及產品，確保產品的質量與安全，從而保障公眾健康。本集團在產品和服務的健康與安全、私隱事宜、知識產權、以及廣告及標籤等方面設立嚴格的管理制度和標準。

本集團嚴格遵守有關產品和服務的相關法律及規例，包括但不限於《中華人民共和國藥品管理法》。報告期，本集團並不知悉任何嚴重違反有關所提供產品和服務的健康與安全、廣告、標籤及私隱事宜以及補救方法的法律及法規，且對本集團造成重大影響的事宜。

### 服務質量 – 養老服務

我們秉持「構建沒有圍牆的養老院，做百年長青的養老服務機構」的業務願景。憑藉周全的服務規劃與專業團隊，本集團提供優質、全面且貼心的養老服務，致力讓每位長者安享舒適愜意的晚年生活。2025年，本集團旗下一些養老機構獲得多項榮譽肯定：無錫廣益養老中心獲評無錫市「三級」養老機構，常州薛家鎮愛心護理院獲選為全國「敬老文明號」擬表彰對象，充分體現集團在長者照護服務方面的專業水準與社會認可。

為確保所有員工提供一致及高水平的服務質量，給予顧客優質的產品，我們已搭建完備的質量管理流程，以嚴謹的科學態度和嚴格的質量管理標準，針對各項相關護理程序，制訂詳盡且明晰的指引與規範。同時，為保持始終如一的優良服務，我們每月進行質量檢查，對旗下的養老機構進行績效考評，當中包括場所環境、客戶溝通情況、服務態度、設施運行情況、客戶意見等。相關的員工會對每個項目評分及記錄需要改進的地方，方便日後跟進及改善。為持續提升服務質素，我們定期向長者提供服務質量滿意度調查表，收集他們對整體服務質素的意見。

**Case Demonstration: Wuhu Fuling Golden Sun Geriatric Care Center “Welcome Mid-Autumn Festival and National Day” Community Celebration Activity**

案例展示：蕪湖福齡金太陽長者照顧中心「迎中秋慶國慶」社區聯歡活動

To welcome the upcoming Golden Week holiday, the facility and the community jointly organized and planned this event, bringing together residents within the care home and elderly members of the surrounding community to share in the joy of National Day celebrations.

迎中秋·慶國慶·為了歡迎即將到來的長假期·機構和社區共同組織策劃了此次活動讓院內和社區老人一起感受國慶的喜悅。



**Case Demonstration: Changzhou Xuejia Aixin Nursing Home “Lantern Festival Joyful Gathering” Festival Activity**

案例展示：常州薛家鎮愛心護理院「元宵喜樂會」節日活動

Changzhou Xuejia Aixin Nursing Home, under Changzhou Qiyue Hongtai, held a traditional “Lantern Festival Joyful Gathering” event during the Lantern Festival period. Volunteers and elderly residents came together to make tangyuan (glutinous rice balls) and lanterns, and enjoyed a variety of wonderful performances. The event allowed elderly residents to experience the joy of traditional customs in a warm and festive atmosphere, while feeling the warmth of companionship and care.

常州啟悅宏泰旗下的常州薛家鎮愛心護理院於元宵節期間舉辦「元宵喜樂會」傳統節日活動，義工與長者共同製作湯圓及燈籠，並欣賞精彩節目表演，讓長者在歡樂氣氛中體驗傳統習俗的樂趣的同時，感受溫馨陪伴與關懷。





DEDICATED TO PRODUCT QUALITY AND SAFETY •

專心致志 • 產品質量與安全

### Case Demonstration: Anti-Fraud Awareness and Training for the Elderly

案例展示：長者防騙宣導培訓

During the year, various elderly care homes under the Group organized multiple thematic training sessions on preventing illegal fundraising activities and elderly-targeted fraud. Through a variety of formats – including explanations of common fraud tactics, distribution of promotional leaflets, screening of anti-fraud educational videos, and inviting police officers to visit the facilities to deliver anti-fraud talks – the sessions effectively enhanced elderly residents' awareness of fraud prevention and their ability to protect themselves.

本集團旗下各老人護理院於年內舉辦多場防範非法集資及養老詐騙專題培訓，透過講解常見詐騙手法、派發宣傳單張、觀看防詐騙教育影片，以及邀請警察局人員到院舍為長者講解及宣傳反詐騙知識等多元形式，提升長者的防騙意識與自我保護能力。



### Case Demonstration: Outdoor Activities Held by Wuxi Wuhe Geriatric Care Home and Wuxi Huifeng Elderly Care Home

案例展示：無錫五河養老院與無錫惠楓怡康院舉辦外出活動

In May 2025, Wuxi Wuhe Geriatric Care Home and Wuxi Huifeng Elderly Care Home, both under Wuxi Beikang Hongtai, organised spring outdoor activities to enrich the daily lives of elderly residents. The activities adopted a one-on-one care model, with medical staff accompanying the group and carrying first aid kits to ensure the safety of all residents. Elderly participants enjoyed sightseeing and photography in the plaza, outdoor picnics, and light-hearted group games, embracing the warmth of spring and spending joyful moments in nature.

無錫北康宏泰旗下的無錫五河護老院與無錫惠楓怡康院於2025年5月舉辦春季戶外活動，豐富長者日常生活。活動採用一對一照顧模式，並安排醫護人員攜帶急救藥箱隨行，確保長者安全。長者於廣場內賞景拍照、享用戶外野餐，並參與輕鬆的集體遊戲，在溫暖春日中感受自然氣息與歡樂時光。





DEDICATED TO PRODUCT QUALITY AND SAFETY •

專心致志 • 產品質量與安全

### Complaint Management

We are dedicated to building and continuously improving our quality management system, leveraging public monitoring mechanisms to uphold our service standards and quality, with the core objective of enhancing service excellence and improving the satisfaction of our elderly residents. All staff shall wear name tags during working hours to facilitate public monitoring. Care receivers can give feedback on the services of nursing attendants to the superintendents, and the supervisors shall revisit the care receiver who gave feedback regularly. We have formulated a complaint management system as the main guideline for handling complaints, and set up a complaint hotline and service mailbox to handle complaints 24 hours a day. After receiving the complaints, we conduct investigations and, if necessary, switch the nursing attendant for the care receiver or require the caregiver to receive training again. If the situation is found to be severe upon comprehensive investigation, we will also consider dismissing the relevant nursing attendant.

During the Reporting Period, we did not receive any complaints.

### 投訴管理

我們致力於構建和完善品質管理體系，依托公開監督機制穩固服務水準與品質，以提升服務品質、增進長者滿意度為核心目標。所有員工當值時需佩戴工作牌，以便於公開監督。服務對象可以隨時向院長反映護理員的服務情況，主任亦會定期跟進探訪服務對象。我們已制定投訴管理制度作為處理投訴的主要指引，並設有投訴熱線和服務信箱，二十四小時處理投訴。一旦接獲投訴，我們將進行調查，並在必要時為服務對象更換護理員或者要求護理員再培訓。倘若在全面調查後發現事態嚴重，我們亦會考慮對相關護理員進行解僱。

報告期間，本集團並未接獲任何投訴。



## DEDICATED TO PRODUCT QUALITY AND SAFETY •

### 專心致志 • 產品質量與安全

#### Safety of the Elderly

We place the utmost importance on the management of the safety and well-being of our elderly residents, and regard this as our foremost priority. The Group continuously carries out service quality management efforts, advancing the comprehensive and effective implementation of safety and health measures throughout the elderly care system, so as to support our elderly residents in enjoying a comfortable and worry-free life. We commit to the safety of the elderly as our first priority. Our nursing homes have formulated a number of policies and measures to strictly manage and control multiple service processes. In accordance with the relevant laws of the Emergency Response Law of the PRC, we formulated a comprehensive emergency response plan covering multiple areas, which played an important role in daily operations and management, life safety of the elderly and risk prevention. The six major working principles we adopt in handling emergencies are as follows:

#### 長者安全

我們高度重視長者的安全與福祉的管理工作，並將這一管理工作作為我們的首要任務。本集團持續開展服務品質管理工作，推進安全及健康措施於養老體系的全面有效實施，助力長者安享舒心無憂的生活。我們承諾把長者的安全放在首位，旗下養老機構已制定多項政策和措施，嚴格管理及控制多個服務流程。我們根據《中華人民共和國突發事件應對法》的相關法律規定，制定完善及全面的應急預案，其對日常營運管理、老人生命安全及防範風險都發揮著非常重要的作用。我們在處理突發事件時堅守以下六大工作原則：

**People-oriented  
All employees are  
important**

以人為本  
全員重視

**Prevention-oriented  
Prevention and control  
measures for groups**

預防為主  
群防群控

**Prompt responses  
Centralized directing**

快速反應  
統一指揮

**Delegation of  
responsibilities  
by grade  
Individual responsibilities**

分級責任  
責任到人

**Division by area  
Management in  
accordance with the law**

分區性質  
依法處置

**Inter-connection  
of systems  
Willingness to share**

系統聯動  
自願共享



## DEDICATED TO PRODUCT QUALITY AND SAFETY •

### 專心致志 • 產品質量與安全

Our contingency plan mainly involves several areas such as support services, medical and nursing, and situations such as fire, aspiration and food poisoning of the elderly. All care workers have received basic first-aid training. Once they discover that an elderly is injured, they conduct initial treatments in accordance with internal policy immediately after which the elderly will be taken to a medical room for further treatment by a medical professional. After that, care workers will continue treatment following doctors' instructions, closely monitor the elderly's recovery situation and notify his/her family. In order to prevent similar recurrence of similar incidents, we document and archive the details of any injuries sustained by elderly residents, to serve as a reminder for care workers to exercise heightened vigilance.

In order to continuously reinforce fire safety awareness among both staff and elderly residents of our care homes, and to comprehensively assess the operational readiness of fire protection facilities within the facilities, all elderly care homes under the Group regularly organize and conduct fire safety training sessions and emergency evacuation drills. During the drill, our staff acted quickly to assist the elderly in evacuating orderly in accordance with the emergency plan, while also assigning personnel use the firefighting equipment to put out the fire.

應急預案主要涉及後勤、醫療及護理等幾個方面，例如火警、長者發生誤吸及食物中毒等各種情況。護理員均接受過基本的急救訓練。一旦發現長者受傷時，他們會即時按照內部守則作初步處理，然後長者將被送往醫療室接受醫務人員的進一步治療。護理員之後會根據醫生意見對老人進行護理，密切監測復原的情況，並通知其家人。為避免同類事件重演，我們會記錄存檔長者受傷狀況，提醒護理人員著重留意。

為持續鞏固養老院職員及長者的消防安全意識，並全面檢驗院舍消防設施能否正常運行，本集團旗下所有老人院定期組織實施消防安全培訓及逃生演練活動。演練期間，職員需按照緊急預案迅速並有序地協助長者撤離現場，同時分配人手運用滅火設備對火災進行撲滅。



# DEDICATED TO PRODUCT QUALITY AND SAFETY •

## 專心致志 • 產品質量與安全



Fire safety training: Introduction to fire protection components, including fire hydrants and fire extinguishers, and the correct methods of operation in the event of a fire  
消防培訓：消防栓和滅火器消防部件的介紹及如何在火災發生時正確使用方法



Firefighting equipment operation drills and fire safety knowledge training  
消防設施操作演練及消防安全知識培訓



Fire safety training for elderly care home staff  
老人院舍職員消防培訓



Fire hazard awareness video study session for elderly care home staff  
老人院舍職員火災警示片學習課程



## DEDICATED TO PRODUCT QUALITY AND SAFETY •

專心致志 • 產品質量與安全

### Case Demonstration: Wuhu Fuling Golden Sun Geriatric Care Center Fire Suppression and Evacuation Drill

案例展示：蕪湖福齡金太陽長者照顧中心滅火疏散演練

In June 2025, Wuhu Fuling Golden Sun Geriatric Care Center jointly organized a fire suppression and evacuation drill in collaboration with the Jinghu District Fire Station. The drill was structured into four designated teams: a fire suppression action team, an evacuation and guidance team, a communications and liaison team, and a medical rescue team. Staff members performed their respective roles in accordance with the pre-established emergency plan, working in a coordinated manner to assist elderly residents in evacuating safely to designated safe areas, while also practising the hands-on operation of fire extinguishers and fire hydrants. The drill effectively enhanced both staff's and elderly residents' fire safety awareness and emergency response capabilities.

2025年6月，蕪湖福齡金太陽長者照顧中心聯同鏡湖區消防站舉辦滅火疏散演習。演練設有四個指定團隊：滅火行動組、疏散引導組、通訊聯絡組及救護組，員工按預案分工協作，協助長者疏散至安全區域，並實際操作滅火器及消火栓。是次演練有效提升員工及長者的消防安全意識及應急處置能力。



### PRODUCT QUALITY – VISSAM PROSPERITY

Vissam Prosperity is a professional company providing research and development, design, production, sales and services on modern furniture that remains committed to providing customers with high-quality products, focusing on serving users in geriatric care, medical, educational and business institutions. The Company has a unique product research and development concept, provides overall solutions for furniture space, and is committed to becoming an industry benchmark. As an advocate and leader of health furniture in the industry, we are renowned within the industry, receiving various certifications and honors and gaining recognition and affirmation from its customers. Vissam Prosperity's certifications and honors include After-sales Service Improvement and Maturity Certification and Healthy Home Ergonomics Certification. Ever since 2005, we have been honoured with the Famous "Environmental Protection" Furniture Brands and "Integrity" Enterprise of 18 provinces and cities in China for consecutive years. We have also been awarded as one of the top ten furniture brands for nine consecutive years in furniture bidding, procurement, evaluation and promotion activities, which fully reflects the brand's profound and outstanding achievements in the sub-sectors of the furniture industry.

### 產品質量－北京偉森

北京偉森是集研發、設計、生產、銷售及服務於一體的專業現代化傢俱品牌企業，致力為客戶提供優質的產品，重點服務對象為養老、醫療、教育、商務辦公等機構用戶。公司擁有獨具匠心的產品研發理念，為傢俱空間提供整體解決方案，致力成為行業標杆。作為行業健康傢俱的宣導者和領軍者，我們在業內享負盛名，榮獲多項認證和殊榮，得到客戶的一致認可和肯定。其中包括售後服務完善成熟度認證、健康家居人類工效學認證等。由2005年至今，我們已連續多年獲得中國十八省市「環保」傢俱知名企業和「誠信」企業殊榮。我們更於傢俱招標採購評價推介活動中連續9年榮獲傢俱十大品牌，充分反映品牌在傢俱行業細分領域的深厚積澱與卓越成果。



## DEDICATED TO PRODUCT QUALITY AND SAFETY •

### 專心致志 • 產品質量與安全

Beijing Weisen upholds the service philosophy of delivering superior products and ensuring a worry-free experience for its customers, and is committed to providing customers with professional, high-quality and safe products. Based on environmentally friendly materials and driven by aesthetic design, we pay attention to the details of each product and conduct precision manufacturing and strict quality inspection. We formulated strict standards regarding design, acceptance of works and storage and required the quality of furniture from suppliers to be up to or even higher than technical standards, including national standards, industrial standards and assessment standards for furniture quality.

In testament to the company's commitment to maintaining the highest standards of quality assurance, Beijing Weisen has obtained multiple ISO system certifications as well as relevant safety product certifications. We require our suppliers to submit ISO quality certifications, product inspection reports, and certificates of conformity for all furniture items, and further require suppliers to conduct air quality testing of rooms both before and after the installation of furniture.

北京偉森秉持優質產品、客戶無憂的服務理念，致力為客戶提供專業、優質、安全的產品。我們注重每一款產品的細節，以環保材料為基礎，以美學設計為驅動，並通過精工製造和嚴格質檢。我們對設計、驗收和存放均制定嚴格標準，要求供應商的傢俱質量符合甚至優於技術標準，其中包括：國家標準、行業標準和傢俱質量評定標準。

為證明及肯定公司做好質量保證的決心，北京偉森已取得多項ISO體系認證證書及相關安全產品認證。我們會要求供應商提交ISO質量認證、產品檢測報告、所有傢俱的合格證明書等，並且要求供應商對擺放傢俱前後的房間空氣質量進行檢測。



ISO 9001:2015  
Management System Certification  
ISO 9001:2015  
質量管理體系認證



ISO 13485:2016  
Machinery Quality  
Management Certification  
ISO 13485:2016  
醫療機械質量管理認證



GB/T 27922-2011  
and GB/T 16868-2009  
After-sales Service Improvement  
and Maturity Certification  
GB/T 27922-2011及  
GB/T 16868-2009  
售後服務完善成熟度認證

To ensure product quality, we have formulated a series of acceptance criteria to regulate the inspection methods for parts, accessories, packaging and finished products. We engage a qualified third-party examination center to conduct sampling inspections regularly. The inspection items include safety, stability and formaldehyde emission of furniture to ensure products comply with the requirements in every aspect. If the product is below standard, we will request that suppliers return the product. In addition, there are warranty periods for our products. Customers can request repair services from suppliers regarding any quality issues.

為確保產品質量，我們已制定一系列的驗收標準，規範零件、配件、包裝、成品等檢驗方法。我們定期委託認可的第三方檢驗中心為產品進行抽樣檢查，確保產品在各方面符合要求，讓客戶可安心使用我們的產品。檢驗項目包括傢俱的安全性、穩定性、甲醛釋放量等。如產品不符合標準，我們要求供應商進行退貨處理。另外，貨物設有質保期，如日後出現質量問題時可要求供應商進行維修。



## DEDICATED TO PRODUCT QUALITY AND SAFETY •

### 專心致志 • 產品質量與安全

During the Reporting Period, a total of 0 products were recalled for safety and health reasons.

#### INTELLECTUAL PROPERTY

The Group regards intellectual property as a valuable asset and places great importance on its protection. As a professional modern furniture brand enterprise, Vissam Prosperity has been involved in the research and development and design of high-end medical and geriatric care furniture for many years, and has a unique product research and development concept. The Company has achieved outstanding performance and owns multiple patented technologies which are applied to furniture products, including but not limited to:

- School Chair Appearance Design Patent;
- School Desk Appearance Design Patent;
- Folding Chair Appearance Design Patent; and
- Utility Model Patent for Gravity-sensing Functional Castor Suitable for Geriatric Care Chairs.

While actively safeguarding its own intellectual property rights and consistently upholding a strong respect for the intellectual property rights of others, we have assigned dedicated staff for handling trademark applications and engaged qualified third-party agents to manage intellectual property rights-related matters of the Group. In order to avoid leaks of information on product design, we signed confidentiality agreements with all employees and “Confidentiality Agreement on Trade Secrets” with suppliers, requiring both parties to perform strict confidentiality measures on trade secrets, including orders, drawings of products, contracts and trademarks.

#### ADVERTISEMENT AND LABELLING

The Group strictly complies with the Advertising Law of the PRC and the Law of the PRC on Protection of Consumer Rights and Interests and relevant laws and regulations when advertising and promoting our products and services to ensure the authenticity of the promotional content in order to avoid misleading and to protect customers’ interests.

#### CUSTOMER PRIVACY AND CYBERSECURITY

The Group places the utmost importance on the security of customer information, and regards the protection of customer privacy and data security as one of its core objectives. Since the daily operations of the Group involve personal information and medical records of the elderly, customers’ information and private information, commercial secrets and financial information, we require employees to strictly follow all rules and policies of the Group regarding confidentiality. They shall not disclose such information to third parties without consent.

報告期內，我們共有0件因安全與健康理由而需回收的產品。

#### 知識產權

本集團視知識產權為寶貴資產，高度重視其保護工作。作為專業現代化傢俱品牌企業，北京偉森多年來一直涉足高端醫養傢俱的研發設計領域，並擁有獨具匠心的產品研發理念。公司成績卓越，有多項專利技術應用在傢俱產品中，包括但不限於：

- 《課椅外觀設計專利》；
- 《課桌外觀設計專利》；
- 《折疊排椅外觀設計專利》；及
- 《一種適用於適老化座椅的重力感應功能性腳輪實用新型專利》。

本集團在維護自身知識產權的同時，始終尊重他人知識產權，我們委派專職人員負責商標申請，並委託受認可的第三方知識產權代理公司處理本集團的知識產權事宜。為防止產品的設計資料外洩，我們與所有員工簽訂保密協議及與供應商簽署《商業秘密保密協議》，要求雙方對商業秘密，如訂單、產品圖紙、合同、商標等進行嚴格保密措施。

#### 廣告及標籤

本集團於產品及服務推廣宣傳過程中嚴格遵從《中華人民共和國廣告法》和《中華人民共和國消費者權益保護法》等相關法例及法規，以確保所有宣傳內容的真確性，避免誤導消費者及保障彼等權益。

#### 客戶私隱及網絡安全

本集團高度重視客戶信息安全，並且將保障客戶私隱和資料安全作為本集團的核心目標。由於在日常營運中會涉及長者的個人資料和病歷、客戶資訊和私隱資料、商業機密、財務信息等，我們嚴格要求員工遵循本集團所有有關保密的規則和政策，在未經同意下不得將這些資料向第三方披露。



## DEDICATED TO PRODUCT QUALITY AND SAFETY •

### 專心致志 • 產品質量與安全

The Group strictly complies with laws and regulations regarding customer privacy and data security, including but not limited to:

- Archives Law of the PRC;
- Regulations on the Security Protection of Computer Information System of the PRC; and
- Personal Data (Privacy) Ordinance (Cap. 486 of the Laws of Hong Kong).

In order to strengthen the Group's network security management and standardize network and system usage rules, Vissam Prosperity formulated the Informatization Network Security Management Policy to ensure information security and data protection. Wuhu Fuling Golden Sun Geriatric Care Center formulated the Elderly Data Confidentiality Policy to further enhance data confidentiality of the elderly and their families. Dedicated staff will be responsible for the customers' personal information, and others shall not have the right to access such information without authorization. All employees shall strictly follow the policy and be aware of data confidentiality for the elderly's files and information. They shall not modify or disclose them without authorization. At the same time, we strictly prohibit employees from taking the elderly's files outside the geriatric care institutions. If employees discover that someone discloses the information, they shall immediately report to their supervisors and stop such behavior promptly. In addition, geriatric care institutions under the Group has established a hospital management system for storing medical records, with control in authorization that only allows certain personnel to access.

本集團嚴格遵守有關客戶私隱和資料安全的法律及法規，包括但不限於：

- 《中華人民共和國檔案法》；
- 《中華人民共和國計算機信息系統安全保護條例》；及
- 香港法例第486章《個人資料(私隱)條例》。

為加強網絡安全管理，以及規範網絡及系統使用守則，北京偉森已制定並實施高標準的《信息化網絡安全管理制度》，積極推進信息保護和數據安全的系統化建設，落實信息安全與數據保護工作。蕪湖福齡金太陽長者照顧中心特意制定《老人信息保密制度》，進一步加強保護長者及家屬的信息保密性。客戶的個人資料會由專職人員負責處理及對其保密，在未經授權的情況下，其他人士並沒有存取權限。所有員工均需嚴格遵守制度，時刻對入住長者的檔案、信息等資料保持保密意識，不得任意更改或外洩。同時，我們嚴格規定員工不可以將長者的檔案資料帶出養老機構。員工在發現有人洩露資料時應立即向上級舉報，並制止其違規行為。另外，集團旗下養老機構設有醫院管理系統，用於規範存儲入住長者病歷資料。該系統設置權限管控機制，僅授權人查閱訪問。

# UPHOLDING PROBITY AND INTEGRITY ON OPERATION

## 恪守誠信 · 廉潔經營

### ANTI-CORRUPTION

Upholding the corporate value of “ integrity and honesty, ” the Group continuously deepens its internal culture of clean governance, and through a variety of channels, promotes anti-corruption and anti-bribery principles among its employees, comprehensively enhancing the integrity awareness and self-discipline of all staff, thereby fostering a corporate environment of uprightness and transparency. We maintain a strict “zero tolerance” policy towards corruption in any form. We strictly comply with the relevant laws and regulations on preventing bribery, extortion, fraud and money laundering, including but not limited to:

- Anti-Unfair Competition Law of the PRC
- Criminal Law of the PRC;
- Interim Provisions on Banning Commercial Bribery; and
- Prevention of Bribery Ordinance (Cap. 201 of the Laws of Hong Kong).

We remain steadfast in advancing anti-corruption efforts and upholding transparent and fair business practices. The Group has formulated the Anti-bribery and Anti-corruption Policy to provide key information and guidance to all employees and contract workers within the Group on the identification and handling of bribery and corruption. Meanwhile, we convey requirements of stringent compliance with the principles of anti-corruption and anti-fraud through the Employee Handbook and daily training. The Handbook clearly specifies that all employees shall follow the code of conduct to maintain good business ethics and integrity, and any actions that are fraudulent, dishonest, violate the ethics or detrimental to the reputation of the Group are prohibited. All employees are not allowed to take advantage of their work, position or identity in the Group to solicit or receive any personal benefits and gifts, such as rebates, secret commission and cash.

### 反貪污

本集團秉持「恪守誠信」的企業價值觀，持續深化內部廉潔文化建設，通過多種形式，向員工宣傳反貪污、反腐敗理念，全面提升全員廉潔意識和自律能力，營造風清氣正的企業氣氛。我們對任何形式的貪污行為採取「零」容忍政策。我們嚴格遵守與防止賄賂、勒索、欺詐及洗黑錢相關的法律及法規，包括但不限於：

- 《中華人民共和國反不正當競爭法》；
- 《中華人民共和國刑法》；
- 《關於禁止商業賄賂行為的暫行規定》；及
- 香港法例第201章《防止賄賂條例》。

我們堅定不移推進反腐敗工作，致力於維護透明與公正的商業操守，築牢拒腐防變的思想防線，並制定《反賄賂和反貪污政策》作為本集團內所有僱員及合約工人對識別及處理賄賂和貪污的主要資訊及指引，以確保所有業務過程中均符合最高道德及法律標準。同時，我們通過《員工手冊》及日常培訓向員工傳達嚴格的反貪污及反欺詐要求。手冊明確列出所有員工需遵從行為守則，維持良好的商業道德和誠信，禁止一切欺詐、不誠實、違背道德或損壞集團聲譽的行為。所有員工均不能利用集團工作、職位或身份索取或接收任何私人利益和贈與，例如回扣、私下佣金及現金等。



GB/T 19022-2023 Corporate Integrity Management System Certification  
GB/T 19022-2023《企業誠信管理體系要求》認證



## UPHOLDING PROBITY AND INTEGRITY ON OPERATION •

### 恪守誠信 • 廉潔經營

#### WHISTLEBLOWING POLICY

The Group strictly prohibits corruption and misconduct, and has established a sound whistleblowing mechanism with clearly defined violations and corresponding disciplinary measures, safeguarding the legitimate rights and interests of the company and its stakeholders while cultivating a culture of integrity. Upon receipt of a report, we will conduct an immediate investigation, report to management and inform government authorities. If the report is found truthful, the employee involved will be dismissed immediately. The Group keeps the identity of whistleblowers confidential during the investigation and provides adequate protection measures to ensure that whistleblowers are effectively protected from unfair dismissal or harm.

In order to prevent corruption incidents, we will continue to review and improve our internal control system and anti-corruption system.

#### ANTI-CORRUPTION TRAINING

To further strengthen the compliance awareness of Directors and employees, the Group conducts dedicated anti-corruption and integrity training programmes to drive the practical implementation of a compliance-oriented culture. We provided anti-corruption training to them through online and offline means during the Reporting Period, including but not limited to specific training on anti-commercial bribery and topics on preventing illegal fundraising, and continuously promoting corporate compliance and anti-corruption culture.

During the Reporting Period, there were no concluded corruption proceedings brought against the Group or its employees, nor was the Group aware of any material violation of laws and regulations relating to the prevention of bribery, extortion, fraud and money laundering that would have a significant impact on the Group.

#### 舉報政策

本集團嚴禁貪污及不當行為，並建立健全的舉報機制，清晰界定違規行為及相應懲處措施，推動反腐倡廉工作的規範化與系統化，以保障公司及持份者的合法權益，營造廉潔誠信的企業文化。在接獲有關舉報後，我們立即展開調查，並向管理人員匯報及通報政府機關。倘若舉報屬實，我們將即時解僱涉事員工。本集團於調查期間對舉報人身份保密，並提供足夠的保護措施，以確保有效保護舉報者免受不公平解僱或傷害。

為防止貪污事件，我們持續檢討及完善內部監控系統及反貪污系統。

#### 反貪污培訓

為進一步規範企業經營環境並加強董事及員工的合規意識，本集團統籌開展反腐倡廉專項培訓，推動合規理念深入人心、落實到位。我們於報告期內透過線上及線下的方式向彼等提供反貪污培訓，其中包括但不限於反商業賄賂專題培訓、如何防範非法集資等課題，持續推動企業的合規、反貪污文化。

報告期內，本集團並無任何針對本集團或其僱員提出並已審結的貪污訴訟案件，亦不知悉任何嚴重違反有關防止賄賂、勒索、欺詐及洗黑錢的法律及法規，且對本集團造成重大影響的事宜。



# MUTUAL BENEFIT AND WIN-WIN ON GREEN PROCUREMENT

## 互利共贏 • 綠色採購

### SUPPLY CHAIN MANAGEMENT

The Group actively pursues the sustainable development of its supply chain, exploring areas for continuous improvement and refining its supply chain management practices year on year. The Group attaches great importance to creating mutually beneficial and win-win opportunities with the suppliers. We actively promote the sustainable development of the supply chain, and promote such concepts to suppliers, encouraging them to comply with the Group's measures on environmental protection as well as occupational health and safety, thereby pursuing synergistic development with suppliers and further enhancing the core competitiveness of both sides. In addition, we encourage suppliers to fulfil their environmental and social responsibilities in daily operations, including upholding business ethics and complying with relevant laws and regulations. Through dynamic oversight and collaborative improvement, we are committed to helping our supply chain partners achieve a balance between fulfilling social responsibilities and delivering commercial value.

As at 31 December 2025, the products and services of the Group were mainly provided by 69 suppliers, all of which were from the Chinese Mainland, thereby effectively reducing the carbon emission caused by product transportation.

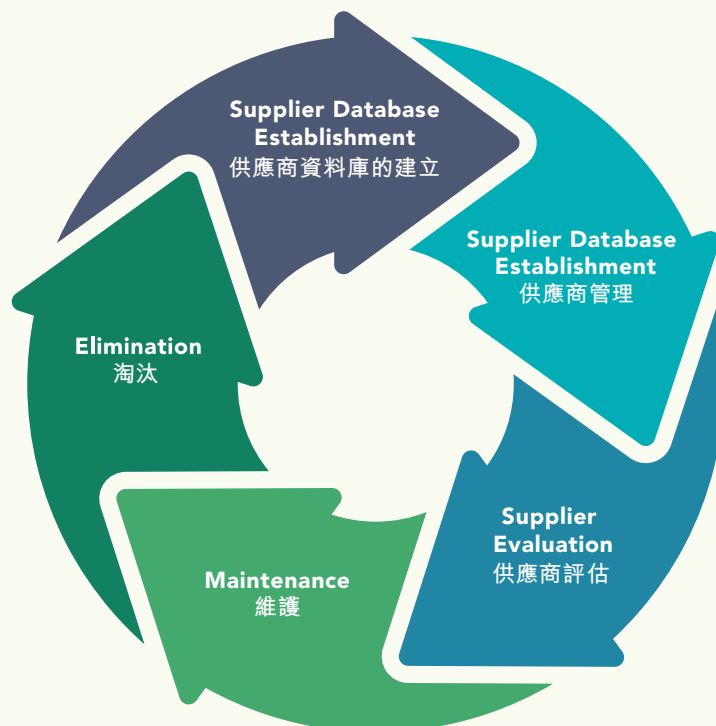
The Group places great importance on building long-term, stable partnerships with its suppliers, carefully selecting quality suppliers aligned with its strategic direction through well-regulated procurement management, working together toward mutual benefit and shared success. Vissam Prosperity has formulated and continued to improve its "Supplier Management Policy". The management process can be categorized into five stages, namely supplier database establishment, supplier management, supplier evaluation, maintenance, and elimination.

### 供應鏈管理

本集團積極關注供應鏈可持續發展，逐年探索提升方向，完善供應鏈管理，並極其重視與供應商創造互利共贏的機遇。我們積極推動供應鏈的可持續發展，向供應商宣揚相關理念，鼓勵供應商遵守本集團環保及職業健康與安全政策，從而與供應商實現協同發展，進一步提升雙方的核心競爭力。另外，我們不忘鼓勵供應商在日常營運中履行其環境及社會責任，其中包括維持商業操守和遵守相關法律及法規。通過動態監管與協作改善，我們致力推動供應鏈夥伴實現社會責任與商業價值的雙贏發展。

於2025年12月31日，本集團主要由69家供應商提供產品及服務，全部均來自於中國內地，從而有效減少因產品運輸而造成的碳排放。

本集團重視與供應商建立長期穩定的合作關係，透過規範採購管理，甄選契合集團戰略發展的優質供應商，攜手實現互惠共贏。北京偉森已制定及持續完善《供應商管理制度》，管理流程可分為五大階段，分別是供應商資料庫的建立、供應商管理、供應商評估、維護，以及淘汰。





## MUTUAL BENEFIT AND WIN-WIN ON GREEN PROCUREMENT •

### 互利共贏 • 綠色採購

To strengthen supply chain management, the Group has established a rigorous supplier evaluation system. The supplier is required to fill in the “Supplier Qualification Review Basic Information Sheet”, and onsite inspections and evaluations will be conducted. After passing the review, they will be accepted and added to the company’s supplier database and become a potential supplier. This system effectively ensures the security and efficiency of the supply chain. We will conduct regular assessments and irregular visits to maintain and update the supplier database in a timely manner. We hold a supplier meeting and a supplier review every year. The Procurement Department is responsible for a comprehensive evaluation of the supplier’s product quality, service standard, production capacity and collaboration. Each department can give feedback to the supplier and review the issues that occurred in terms of the products supplied. According to the evaluation indicators, the supplier will be evaluated to determine whether it is qualified. If the supplier fails the assessment, we will issue a rectification notice to them. If such a supplier fails to make improvements, we will consider disqualifying the supplier. During the Reporting Period, we have conducted assessments and reviews on 21 suppliers.

In addition, to ensure the normal operation of the supply chain, we conduct environmental and social risk assessments when selecting suppliers to identify the risks faced by the suppliers and the potential impact of adopting such suppliers.

為強化供應鏈管理，本集團建立了嚴格的供應商評估體系，供應商需要填寫《供應商資格審查基本情況表》，並需接受實地考察和評估，成功經過審核方可進入公司供應商庫，成為潛在供應商，這一制度有效確保了供應鏈的安全與效率。我們會以定期評估及不定期訪查形式及時維護並更新供應商庫。我們每年舉行一次供應商會議和供應商評審，採購部負責對供應商的產品質量、服務水平、生產能力及配合等方面進行綜合評估。各部門可於此階段向供應商反饋及審視供貨時出現的問題。其後根據各項審核指標評估供應商是否及格。如有供應商不及格，我們會向他們發出整改通知。如該供應商並未作出改善，我們會考慮取消供應商資格。報告期內，我們已向21家供應商進行評估及審查。

除此之外，為確保供應鏈運作正常，我們在選擇供應商時會進行環境及社會的風險評估，識別其所面對的風險及採用該等供應商的潛在影響。



# MUTUAL BENEFIT AND WIN-WIN ON GREEN PROCUREMENT

## 互利共贏 • 綠色採購

### GREEN PROCUREMENT

The Group actively implements green procurement practices, paying close attention to the environmental performance of its suppliers and giving priority to products and services that meet established environmental standards. In order to achieve sustainable development, we tend to work with environmentally conscious suppliers. Vissam Prosperity stipulates that the products and materials purchased should use green, environmentally friendly materials, such as planks, paints, hardware, adhesives, auxiliary materials, etc. Each of the materials must basically comply with or perform better than national standards. In order to further minimize our negative impact on the ecosystem, we are committed to selecting green materials for our production process, thus enabling our business partners and us to build a sustainable competitive advantage. Among them, Vissam Prosperity has been awarded the Green Supply Chain 5-star Ranking and the Government's Green Procurement Requirements Standard Certification.

### 綠色採購

本集團積極落實綠色採購，關注供應商環保表現，優先考量符合環保標準的產品與服務。為實現可持續發展，我們傾向與環境意識較高的供應商合作。北京偉森規定採購的產品及物料均使用綠色環保材料，例如板材、油漆、五金、膠黏劑、輔料等，各項材料均需要符合或高於國家標準。為進一步降低對生態環境的負面影響，我們致力從生產流程中挑選綠色環保物料，從而使我們及業務夥伴建立可持續的競爭優勢。其中北京偉森已獲綠色供應鏈5星級評價及政府綠色採購需求標準認證。



CEC-7011GSC-A/1 Green Supply Chain 5-star Rating  
CEC-7011GSC-A/1綠色供應鏈5星級評價



CEC-7046CVP-A/0 Government's Green Procurement Requirements Standard Certification  
Furniture made of synthetic boards  
CEC-7046CVP-A/0 政府綠色採購需求標準認證  
認證—人造板類傢俱



# PEOPLE-ORIENTED ON EMPLOYEE GROWTH AND DEVELOPMENT

## 以人為本 • 員工成長與發展

### EMPLOYMENT

The Group firmly believes that its employees are a key driving force behind sustainable development, and regards them as the most valuable asset of the enterprise. We are committed to improving the human resources management system and expect our employees to devote themselves to work for the Group with “ Sincerity ”, “ Honesty ” and “ Trustiness ”, while growing together with the Group and realizing our corporate culture of “ Integrity, Innovation, Focus and Win-win ”.

The Group always adheres to the laws and regulations relating to employment, including but not limited to:

- Labor Law of the PRC;
- Labor Contract Law of the PRC;
- Provisions on the Prohibition of Using Child Labor;
- Civil Code of the PRC; and
- Employment Ordinance (Cap. 57 of the Laws of Hong Kong).

The Group has formulated the Compilation of Human Resources Policy pursuant to the above laws and regulations to strictly regulate various human resource management activities, so as to protect the legal rights and interests of employees. In addition, the Employee Handbook clearly sets out the basic code of conduct for employees so as to ensure that employees have a clear understanding of the Group ’ s policies, regulations, and work requirements, and to collectively foster a positive and dynamic workplace environment.

During the Reporting Period, the Group was not aware of any material violation of laws and regulations relating to compensation and dismissal, recruitment and promotion, working hours, rest periods, equal opportunities, diversity, anti-discrimination and other benefits and welfare that would have a significant impact on the Group.

### 僱傭

本集團深信，員工是推動可持續發展的關鍵力量，亦將員工視為企業的珍貴資產。我們致力完善人力資源管理制度，期望所有員工對集團做到「誠」、「實」、「信」，與集團共同成長，一同實踐我們「誠信、創新、專注、共贏」的企業文化。

本集團一直恪守與僱傭相關的法例及法規，包括但不限於：

- 《中華人民共和國勞動法》；
- 《中華人民共和國勞動合同法》；
- 《禁止使用童工規定》；
- 《中華人民共和國民法典》；及
- 香港法例第57章《僱傭條例》。

本集團根據以上的法律及法規制定《人力資源管理制度彙編》，嚴格規範各項人力資源管理活動，保障員工的合法權益。另外，《員工手冊》中清楚列明員工的基本行為準則，為員工能夠清晰了解集團的政策、規定以及工作要求，共同營造積極向上、充滿活力的職場環境。

報告期內，本集團並不知悉任何嚴重違反有關薪酬及解僱、招聘及晉升、工作時數、假期、平等機會、多元化、反歧視以及其他待遇及福利的法律及法規，且對本集團造成重大影響的事宜。



# PEOPLE-ORIENTED ON EMPLOYEE GROWTH AND DEVELOPMENT •

## 以人為本 • 員工成長和發展

### Staff Overview

As at 31 December 2025, we hired a total of 135 employees. Details of employees are as follows:

### 員工概覽

於2025年12月31日，我們共有135位員工。詳細員工分佈如下：

Unit		2025 2025年	Private Non-profit Geriatric Care Homes <sup>2</sup>	Total
單位		Group Personnel <sup>1</sup>	民辦非營利性 養老院 <sup>2</sup>	合計
		本集團人員 <sup>1</sup>		
<b>By gender</b>				
按性別				
Male	Person	66	121	187
男性	人			
Female	Person	69	200	269
女性	人			
<b>By age group</b>				
按年齡組別				
Aged 30 or below	Person	32	61	93
30歲或以下	人			
Aged 31–40	Person	32	31	63
31–40歲	人			
Aged 41–50	Person	44	49	93
41–50歲	人			
Aged 51 or above	Person	27	180	207
51歲或以上	人			
<b>By type of employee</b>				
按僱員類型				
Full time	Person	132	275	407
全職	人			
Part time	Person	3	46	49
兼職	人			
<b>By geographical region</b>				
按地區				
Chinese Mainland	Person	131	321	452
中國內地	人			
Hong Kong	Person	4	0	4
香港	人			



# PEOPLE-ORIENTED ON EMPLOYEE GROWTH AND DEVELOPMENT •

## 以人為本 • 員工成長和發展

		2025 2025年	Private Non-profit Geriatric Care Homes <sup>2</sup>	Total
Unit		Group Personnel <sup>1</sup>	民辦非營利性 養老院 <sup>2</sup>	合計
單位		本集團人員 <sup>1</sup>		
<b>By employee category</b>				
<b>按僱員類別</b>				
Senior management	Person	24	6	30
高級管理層	人			
Middle management	Person	23	25	48
中級管理層	人			
General staff	Person	88	290	378
基層員工	人			

<sup>1</sup> The Group Personnel data presented herein is consistent with the reporting scope disclosed in the Annual Report.

<sup>1</sup> 本集團人員數據與年報披露的報告範圍保持一致。

<sup>2</sup> All five elderly care homes mentioned above are operated as private non-profit-making entities. In accordance with Hong Kong Generally Accepted Accounting Principles, these private non-profit-making entities are not included in the scope of the Group's consolidated financial statements. Such exclusion does not affect the Group's daily operation and management, service quality control, operational scale statistics, internal assessment of operating performance in respect of these elderly care homes, nor does it affect the information disclosure in this report. The scope of data presented for private non-profit geriatric care homes includes: Wuhu Fuling Golden Sun Geriatric Care Center, Wuxi Guangyi Geriatric Care Center, Wuxi Wuhe Geriatric Care Home, Wuxi Huifeng Elderly Care Home, Changzhou Xuejia Aixin Nursing Home and Changzhou Beikang Aixin Nursing Home.

<sup>2</sup> 上述五家養老院均以民辦非營利性質運營。根據香港一般公認會計原則，該等民辦非營利機構不計入本集團合併財務報表範圍，惟不影響本集團對該等養老院的日常營運管理、服務質量管控、營運規模統計及經營效益內部評估與本報告的信息匯報。民辦非營利性養老院呈報的數據範圍包括：蕪湖福齡金太陽長者照顧中心、無錫廣益養老中心、無錫五河護老院、無錫惠楓怡康院、常州薛家鎮愛心護理院及常州市新北區北康愛心護理院。

# PEOPLE-ORIENTED ON EMPLOYEE GROWTH AND DEVELOPMENT •

## 以人為本 • 員工成長和發展

During the Reporting Period, the employee turnover rate of the Group is as follows:

報告期內，本集團的僱員流失率如下：

		2025 2025年	Private Non-profit Geriatric Care Homes <sup>2</sup> 民辦非營利性 養老院 <sup>2</sup>	Total 合計
Unit 單位		Group Personnel <sup>1</sup> 本集團人員 <sup>1</sup>		
<b>By gender</b> 按性別				
Male 男性	Percentage 百分比	11	27	21
Female 女性	Percentage 百分比	17	29	26
<b>By age group</b> 按年齡組別				
Aged 30 or below 30歲或以下	Percentage 百分比	31	26	28
Aged 31–40 31–40歲	Percentage 百分比	13	26	19
Aged 41–50 41–50歲	Percentage 百分比	7	14	11
Aged 51 or above 51歲或以上	Percentage 百分比	7	33	29
<b>By geographical region</b> 按地區				
Chinese Mainland 中國內地	Percentage 百分比	15	28	24
Hong Kong 香港	Percentage 百分比	0	0	0

<sup>1</sup> The Group Personnel data presented herein is consistent with the reporting scope disclosed in the Annual Report.

<sup>1</sup> 本集團人員數據與年報披露的報告範圍保持一致。

<sup>2</sup> All five elderly care homes mentioned above are operated as private non-profit-making entities. In accordance with Hong Kong Generally Accepted Accounting Principles, these private non-profit-making entities are not included in the scope of the Group's consolidated financial statements. Such exclusion does not affect the Group's daily operation and management, service quality control, operational scale statistics, internal assessment of operating performance in respect of these elderly care homes, nor does it affect the information disclosure in this report. The scope of data presented for private non-profit geriatric care homes includes: Wuhu Fuling Golden Sun Geriatric Care Center, Wuxi Guangyi Geriatric Care Center, Wuxi Wuhe Geriatric Care Home, Wuxi Huifeng Elderly Care Home, Changzhou Xuejia Aixin Nursing Home and Changzhou Beikang Aixin Nursing Home.

<sup>2</sup> 上述五家養老院均以民辦非營利性質運營。根據香港一般公認會計原則，該等民辦非營利機構不計入本集團合併財務報表範圍，惟不影響本集團對該等養老院的日常營運管理、服務質量管控、營運規模統計及經營效益內部評估與本報告的信息匯報。民辦非營利性養老院呈報的數據範圍包括：蕪湖福齡金太陽長者照顧中心、無錫廣益養老中心、無錫五河護老院、無錫惠楓怡康院、常州薛家鎮愛心護理院及常州市新北區北康愛心護理院。



## PEOPLE-ORIENTED ON EMPLOYEE GROWTH AND DEVELOPMENT •

### 以人為本 • 員工成長和發展

#### Recruitment and Promotion

The Group firmly believes that establishing an open and transparent recruitment and promotion system is the cornerstone of cultivating a workplace culture built on mutual trust and fairness. In order to meet the human resources needs of the Group's business development, the Administration Department is responsible for formulating recruitment plans and targets, and recruits talents through different channels, including but not limited to agencies, employee referrals, recruitment fairs and campus recruitment, so as to ensure that the Group has sufficient talent reserves for the construction of a professional team in the long run. We select talents based on the principles of fairness, justice and equality. The Group conducts annual appraisals. In order to create a fair and equitable working environment for employees, enabling them to fully realise their potential, we have established clear standards and consistent processes to ensure that all staff are fairly evaluated, providing a multidimensional development for employee promotion.

#### Equal Opportunity and Anti-Discrimination

The Group adopts a "zero" tolerance policy against any form of discrimination in the workplace. Training, promotion and termination policies will not be based on age, gender, language, race, disability, sexual orientation, family or marital status, nationality, religion and socio-economic background of the employees.

#### 招聘及晉升

本集團堅信，構建公開透明的招聘及晉升體系是塑造互信公平職場文化的基石。為滿足本集團業務發展對人力資源的需求，行政部負責制定人才招聘計劃及目標，並透過不同渠道招募人才，包括但不限於職業中介機構、員工推薦、招聘會及校園招聘等，以保證集團內人才儲備充足，實現長遠的專業梯隊建設。我們以公平、公正、平等的原則選拔人才。本集團每年進行年度考評。為創建員工公平、公正的工作環境，使其充分發揮潛力，我們已制定明確標準和一致流程，確保所有員工都獲得公平評估，為員工晉升提供多渠道發展。

#### 平等機會及反歧視

本集團對任何形式的職場歧視採取「零」容忍的政策。培訓、晉升及解僱政策不會以員工年齡、性別、語言、種族、殘疾、性取向、家庭或婚姻狀況、國籍、宗教和社會經濟背景為依據。

Staff Rights and Benefits

員工權益及福利

Remuneration Management 薪酬管理

The remuneration structure of the Group mainly consists of basic remuneration and performance remuneration. We regularly review our remuneration system and measure staff performance through a performance appraisal system as a basis for adjusting their remuneration.

本集團的薪酬架構主要由基本薪酬與績效薪酬組成。我們定期檢討薪酬機制及通過績效評估體系來衡量員工表現，作為調整其薪酬的依據。

Attendance Management 考勤管理

The Group's attendance management system clearly sets out the working hours of our employees in order to ensure that their rights are protected. An employee is required to submit an application in advance for working overtime. The Group will make overtime payment or leave rearrangement in accordance with the laws and regulations.

本集團考勤管理相關制度清楚列明員工的工作時間，以保障他們的權益。如因工作需要加班，員工需事先申請。本集團會按法律及法規向彼等支付加班工資或安排調休。

Management of Staff Leave 休假管理

All employees are entitled to statutory holidays, personal leave, sick leave and paid annual leave. To support our employees in balancing family and work life, we incorporate family-friendly elements, providing maternity leave and paternity leave to employees in need.

所有員工均能享有法定節日假、事假、病假及有薪年休假。為支持員工平衡家庭與職業生活，我們於制度融入家庭友善元素，為有需要的員工提供產假及侍產假等假期。

Benefits Management 福利管理

The Group provide its employees in the Chinese Mainland with four social insurances and one housing provident fund in strict accordance with the Social Insurance Law of the PRC, including work injury insurance, medical insurance, pension insurance, unemployment insurance and housing provident fund.

本集團嚴格按照根據《中華人民共和國社會保險法》為中國內地員工繳納四險一金，包括工傷保險、醫療保險、養老保險、失業保險以及住房公積金。

Recreational Activities for Employees 員工康樂活動

The Group values the physical and mental health of its employees and actively promotes the maintenance of work-life balance. We regularly organize cultural, recreational and sports activities, including but not limited to birthday celebrations, annual celebrations, organizational building activities and meals, to enhance understanding and affection among colleagues and strengthen the tacit understanding and cohesion of the team.

本集團重視員工的身心健康，積極宣揚保持工作與生活平衡。我們定期組織文娛康體活動，包括但不限於慶祝生日、年度慶典、組織建設活動和聚餐，增進同事間的了解和感情，加強團隊的默契及凝聚力。



## PEOPLE-ORIENTED ON EMPLOYEE GROWTH AND DEVELOPMENT •

### 以人為本 • 員工成長和發展

#### Case Demonstration: Vissam Prosperity Marathon Team Building Activity

案例展示：北京偉森馬拉松團建活動

In November 2025, a team of Vissam Prosperity employees participated in the Meishan Dongpo Half Marathon, running together along a race course that blended historical charm with vibrant energy. Through every stride, they demonstrated perseverance and determination, while their collaborative spirit showcased the strength of teamwork. The team successfully completed the challenge, further strengthening morale and fostering a greater sense of unity among its members.

2025年11月，北京偉森員工團隊參加眉山東坡半程馬拉松賽事，於古韻與活力交織的賽道上攜手奔跑，以腳步體現堅持，以協作展現團隊力量，成功完成挑戰，凝聚團隊士氣。



#### Case Demonstration: Beijing Office Celebrates Festive Occasions with Employees, Fostering Team Spirit

案例展示：北京辦公室與員工共慶佳節，凝聚團隊

The Beijing office regularly organises quarterly birthday celebrations and festive events for its employees, including celebrations for occasions such as the Mid-Autumn Festival and Christmas. These gatherings provide an opportunity for employees to share joyful moments together, strengthening team bonds and cultivating a warm and harmonious corporate atmosphere.

北京辦公室定期為員工舉辦季度生日會及節日慶祝活動，及中秋、聖誕等節日慶典，與員工共享歡聚時刻，凝聚團隊情誼，營造和諧溫暖的企業氣氛。



**Case Showcase: Beijing Yicheng Strengthens Party-Building Leadership to Consolidate the Foundation for Development**

案例展示：北京毅成強化黨建引領，築牢發展根基

The Group actively carries out Party-building work, regularly organising a diverse range of Party Day activities, including theoretical study sessions, thematic Party lectures, red-themed film screenings, and on-site visits, continuously strengthening ideological education among Party members and driving Party-building efforts to greater depth and effectiveness.

In commemoration of the 103rd anniversary of the founding of the Communist Party of China, the Yicheng Party Branch held a themed Party Day event during the July 1st period. The activities included a Party discipline education lecture delivered by the Party Secretary, a collective screening of the film "Sweep Away the Black Forces: Never Give Up", as well as volunteer service activities for Party members, designed to inspire Party members to stay true to their original aspirations, forge ahead with determination, and pay tribute to the Party's birthday through concrete action.

本集團積極開展黨建工作，定期組織形式多樣的黨日活動，涵蓋理論學習、專題黨課、紅色觀影及實地參觀等，持續強化黨員思想教育，推動黨建工作走深走實。

為紀念中國共產黨成立103周年，毅成黨支部於七一期間舉辦主題黨日活動，內容涵蓋書記講授黨紀教育專題黨課、集體觀看《掃黑•決不放棄》影片，以及開展黨員志願服務活動，引導黨員不忘初心、砥礪奮進，以實際行動獻禮黨的生日。



**HEALTH AND SAFETY**

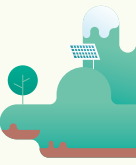
As a responsible and forward-thinking enterprise, we place our corporate vision of "creating a healthy and happy life" at the core of our business operations, and are committed to providing employees with a safer and healthier working environment. To achieve "zero" workplace injuries and ensure the well-being of our employees, we have put in place stringent safety standards and management measures, as well as ongoing training for our staff.

We strictly comply with relevant laws and regulations, including but not limited to the Law of the PRC on the Prevention and Control of Occupational Diseases and the Occupational Safety and Health Ordinance (Cap. 509 of the Laws of Hong Kong). In order to regulate relevant management works, we have established various health and safety management measures for our subsidiaries based on the nature of their business. Vissam Prosperity has obtained the ISO45001:2018 Occupational Health Safety Management System Certification.

**健康與安全**

作為負責任的現代化企業，我們將「健康、快樂的生活的創造者」的企業願景置於企業運營的核心位置，務求為員工創造一個更加安全、健康的工作環境。為實現「零」工傷及確保員工福祉，我們已制定嚴格的安全標準和管理措施，並持續為員工提供培訓。

我們嚴格遵守相關的法律法規，包括但不限於《中華人民共和國職業病防治法》及香港法例第509章《職業安全及健康條例》。為規範相關管理工作，我們已根據業務性質為各附屬公司制定各項保障健康及安全管理措施。北京偉森已獲得ISO45001:2018職業健康安全管理体系認證。



PEOPLE-ORIENTED ON EMPLOYEE GROWTH AND DEVELOPMENT •

以人為本 • 員工成長和發展



During the Reporting Period, the Group was not involved in any significant work injury or fatal incident. The number of work-related fatalities and lost days due to work injury for the past three years (including the Reporting Period) is set out below:

報告期內，本集團並無牽涉任何重大的工傷及死亡事故。過去三年(包括報告期)的因工亡故及因工傷損失工作日數的數據如下：

	Unit 單位	2025 2025年	2024 2024年	2023 2023年
Work-related fatalities 因工亡故	case 宗	0	0	0
Lost days due to work injury 因工傷損失工作日數	day 天	0	0	36

We have established standardised procedures to immediately activate a response mechanism in the event of an employee injury, ensuring that the injured party receives prompt medical treatment without delay. The Human Resources Department will report the accident in accordance with the established work-related injury handling procedures and assist injured employees in handling medical compensation-related matters.

我們已制訂標準程序，一旦發生員工受傷事故，即時啟動應對機制，確保傷者迅速獲得醫療救治。人力資源部依照既定的工傷處理流程進行事故報告，並協助員工處理醫療賠償相關事宜。

During the Reporting Period, the Group was not aware of any material violation of laws and regulations relating to providing a safe working environment and protecting employees from occupational hazards that would have a significant impact on the Group.

報告期內，本集團並不知悉任何嚴重違反有關提供安全工作環境及保障僱員避免職業性危害的法律及法規，且對本集團造成重大影響的事宜。



The Group has formulated a series of measures on staff safety and health:

本集團已就員工安全及健康制定一系列的措施：

**Safety**  
安全

- Set up the “Fire Safety Operation Regulations and Policy” to set out in detail the fire safety management work;  
設立《消防安全操作規程及制度》，詳細列明執行消防安全的管理工作；
- Conduct fire safety inspection on a regular basis;  
定期進行消防檢查；
- Conduct safety training on a regular basis, including prevention of electricity hazards and fire, practical operation of fire safety facilities and seminars on gas knowledge in order to improve employees’ awareness of disaster prevention;  
定期進行安全培訓，包括防火防電、消防設施實操以及舉辦燃氣知識講座等，提高員工的防災意識；
- Formulate emergency plans according to possible emergencies such as fire and earthquake, and conduct fire safety emergency drills, which include the use of fire extinguishers, and escape drills to equip employees with the ability to respond to emergencies and enhance their self-protection capability in an emergency; and  
根據可能發生的突發事故如火災及地震制定應急預案，並進行消防安全應急演練，包括使用滅火器、逃生演練，讓員工掌握在緊急情況下的應變及自我防護的能力；及
- Formulate the cleaning and safety operating procedures, and set out in detail the safety matters to be followed in the course of performing cleaning work.  
制定保潔安全操作規程，詳細列明進行清潔工作時的安全事項。

**Health**  
健康

- Provide employees with comprehensive medical insurance to help them lessen their personal medical burden in accordance with the “Provisions on Basic Medical Insurance of Beijing Municipality”;  
按照《北京市基本醫療保險規定》為員工提供完善的醫療保險，幫助員工解決個人醫療負擔過重的問題；
- Arrange body checks for employees once every two years to ensure that health problems are detected, and treatments are provided on time; and  
每兩年安排員工進行一次健康體檢，確保員工及時發現身體問題，不會耽誤治療時間；及
- Regularly promote health information on social media, such as promoting “China Teeth Care Day”, to raise awareness of oral health care among our staff and customers.  
定期於社交媒體上宣傳健康資訊，例如宣傳「全國愛牙日」，提高員工及客戶對於口腔保健的意識。

**TRAINING AND DEVELOPMENT**

Staff training and development is the core driving force for business sustainable growth, as well as the key to enhancing the competitiveness of enterprises. The Group provides employees with a diversified development platform through the enhancement of career advancement pathways and the strengthening of its training system, thereby building a comprehensive talent development framework. We are actively creating a favorable learning ambience, and improving the training system based on the principle of “ Economical, Practical and Efficient ” . In order to effectively enhance the working skills and professional knowledge of our staff, we organize employee training through versatile and diversified development programmes. The Group accelerates the cultivation and deployment of talent.

**培訓及發展**

員工發展及培訓是業務可持續發展的核心動力，同時也是提升企業競爭力的關鍵。本集團通過完善成長通道、健全培訓體系等方式，為員工搭建多元化發展平台，打造全方位人才培養體系。我們積極營造良好的學習氣氛，按照「經濟、實用、高效」的原則完善培訓制度。為有效提升員工工作技能和專業知識，我們組織僱員培訓，通用多元化的培養項目，加速人才培養與任用。



# PEOPLE-ORIENTED ON EMPLOYEE GROWTH AND DEVELOPMENT •

## 以人為本 • 員工成長和發展

During the Reporting Period, the data of training of the Group is as follows :

報告期內，本集團的培訓數據如下：

Unit		2025 2025年	Private Non-profit Geriatric Care Homes <sup>2</sup>	Total
單位		Group Personnel <sup>1</sup>	民辦非營利性 養老院 <sup>2</sup>	合計
		本集團人員 <sup>1</sup>		
<b>Percentage of employees trained</b>				
受訓僱員百分比				
<b>By gender</b>				
按性別				
Male	Percentage	61	94	82
男性	百分比			
Female	Percentage	77	88	85
女性	百分比			
<b>By employee category</b>				
按僱員類別				
Senior management	Percentage	50	100	60
高級管理層	百分比			
Middle management	Percentage	65	100	83
中級管理層	百分比			
General staff	Percentage	75	89	86
基層員工	百分比			
<b>Average trained hours completed per employee</b>				
每名僱員平均受訓時數				
<b>By gender</b>				
按性別				
Male	Hours	5.99	28.50	20.55
男性	小時			
Female	Hours	8.71	47.35	37.44
女性	小時			

		2025 2025年	Private Non-profit Geriatric Care Homes <sup>2</sup>	Total
Unit		Group Personnel <sup>1</sup>	民辦非營利性 養老院 <sup>2</sup>	合計
單位		本集團人員 <sup>1</sup>		
<b>By employee category</b>				
<b>按僱員類別</b>				
Senior management	Hours	12.55	10.75	12.19
高級管理層	小時			
Middle management	Hours	10.51	10.54	10.53
中級管理層	小時			
General staff	Hours	5.15	43.41	34.50
基層員工	小時			

<sup>1</sup> The Group Personnel data presented herein is consistent with the reporting scope disclosed in the Annual Report.

<sup>2</sup> All five elderly care homes mentioned above are operated as private non-profit-making entities. In accordance with Hong Kong Generally Accepted Accounting Principles, these private non-profit-making entities are not included in the scope of the Group's consolidated financial statements. Such exclusion does not affect the Group's daily operation and management, service quality control, operational scale statistics, internal assessment of operating performance in respect of these elderly care homes, nor does it affect the information disclosure in this report. The scope of data presented for private non-profit geriatric care homes includes: Wuhu Fuling Golden Sun Geriatric Care Center, Wuxi Guangyi Geriatric Care Center, Wuxi Wuhe Geriatric Care Home, Wuxi Huifeng Elderly Care Home, Changzhou Xuejia Aixin Nursing Home and Changzhou Beikang Aixin Nursing Home.

<sup>1</sup> 本集團人員數據與年報披露的報告範圍保持一致。

<sup>2</sup> 上述五家養老院均以民辦非營利性質運營。根據香港一般公認會計原則，該等民辦非營利機構不計入本集團合併財務報表範圍，惟不影響本集團對該等養老院的日常營運管理、服務質量管控、營運規模統計及經營效益內部評估與本報告的信息匯報。民辦非營利性養老院呈報的數據範圍包括：蕪湖福齡金太陽長者照顧中心、無錫廣益養老中心、無錫五河護老院、無錫惠楓怡康院、常州薛家鎮愛心護理院及常州市新北區北康愛心護理院。

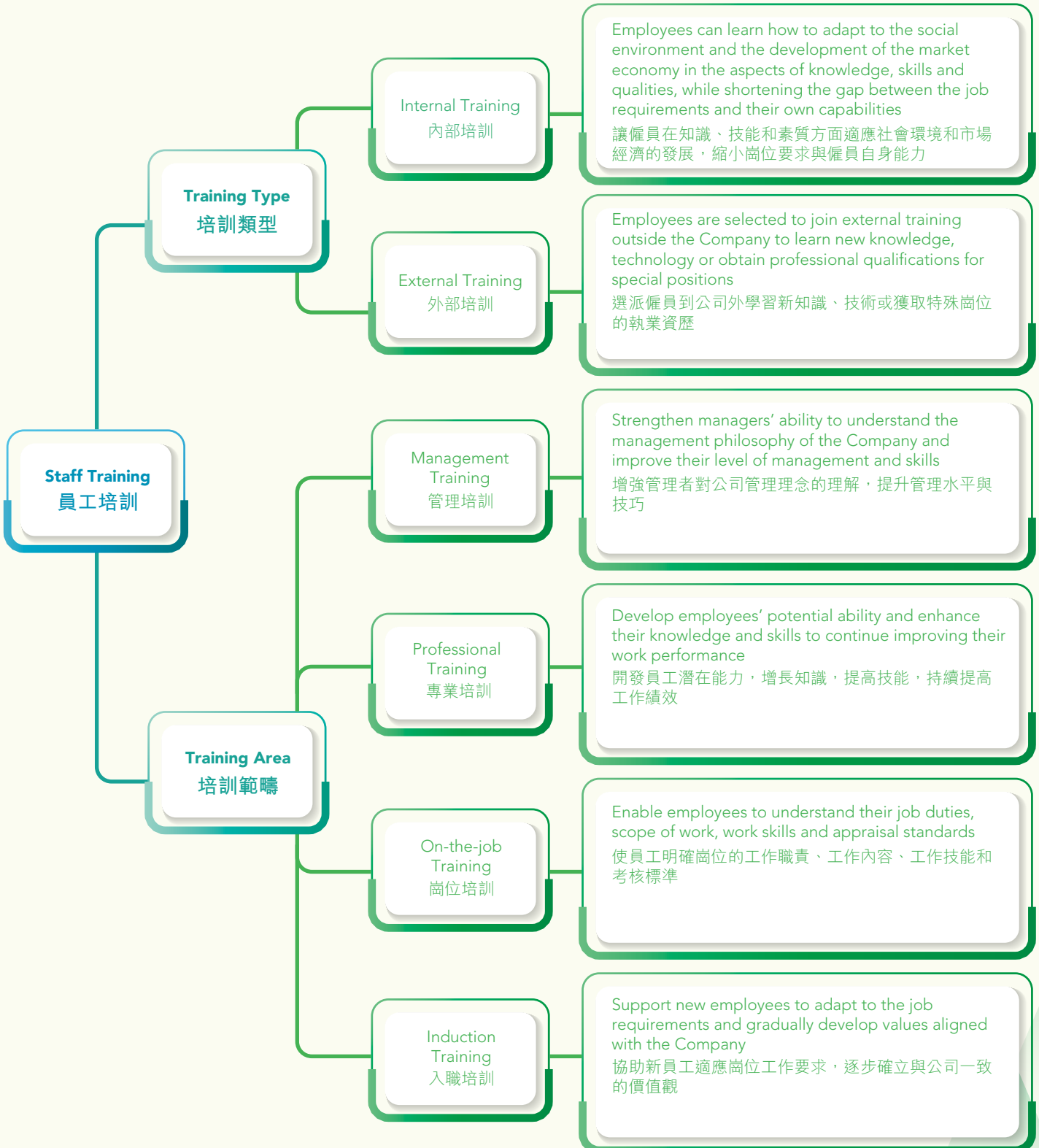


# PEOPLE-ORIENTED ON EMPLOYEE GROWTH AND DEVELOPMENT •

## 以人為本 • 員工成長和發展

The Group's training can be categorized by type and area of training, with corresponding objectives for each type of training.

本集團的培訓可按培訓類型及範疇劃分，並為每類培訓訂立相應目標。





## PEOPLE-ORIENTED ON EMPLOYEE GROWTH AND DEVELOPMENT •

### 以人為本 • 員工成長和發展

During the Reporting Period, each of the Group's subsidiaries organized different types of internal and external training, including but not limited to training on new products for the elderly, fire safety training, production safety, prevention of illegal fund-raising, food safety and anti-bribery and anti-corruption work.

To evaluate the effectiveness of the training, trained employees are required to complete the "Training Effectiveness Survey Feedback Form" to alert the management departments to areas for improvement. We summarize the progression of training in each department on an annual basis and put forward a training demand plan for the coming year, thereby improving the effectiveness of training continuously.

#### Geriatric Care Business Training

To train a number of nursing staff to take care of the elderly, we have established a set of training syllabi that are targeted training programmes to address the capability enhancement needs of different employee groups, including the newly recruited staff, medical staff, backend service staff and part-time staff of the hospital's infection management department. Each unit has its specific training contents and appraisal standards. We provide training for new staff to help them become familiar with the hospital environment, various rules and regulations, work procedures and relevant professional knowledge as soon as possible. With regard to the Group's elderly care business, first aid knowledge is of particular importance, we implement strict performance appraisals, which mainly include assessing the working attitude and competence of the staff, and the contents of the appraisals will cover first-aid knowledge, nursing theory and first-aid drug application. A number of the Group's employees hold professional qualification certificates, including Assistant Social Worker, Elderly Capability Assessor, Medical Care Worker Certificate, and Intermediate Fire Control Room Operator Certificate. In 2025, one employee was honoured with an Excellence Award at the 3rd Wuhu Municipal Vocational Skills Competition and the City-wide Civil Affairs Industry Vocational Skills Competition (Elderly Care Worker Category), demonstrating the team's professional competence and high standard of service.

In order to build a competitive talent advantage for the Group, the Group's training not only enhanced work efficiency, but also demonstrated its serious attitude and responsibility towards the safety of elderly care. During the Reporting Period, Wuhu Fuling Golden Sun Geriatric Care Center provided a series of training for employees on a monthly basis to improve employees' emergency response ability and strengthen the safety protection for the elderly. The training on Work Safety Law of the PRC, fire training and other training are included in the training.

報告期內，本集團附屬公司根據自身的特點和需求，編製了各具特色的培訓方案，實施內外結合的員工培養計劃，持續聚焦但不限於養老新產品培訓、消防安全培訓、安全生產工作、防範非法集資、食品安全及反賄賂反腐敗等。

為了更有效地評估培訓效果，受培訓的僱員需填寫《培訓效果調查反饋表》，讓管理部門了解需要改進的地方。我們每年度對各部門的培訓情況進行總結，並提出下年度培訓的需求計劃，持續提升培訓效果。

#### 養老業務培訓

為培訓大量護理人員照顧長者，我們已建立一套培訓大綱，針對不同群體的能力提升需求，開展專項培訓計劃，其中包括新入職人員、醫務人員、後勤服務人員及醫院感染管理科的兼職人員。各單位均設有特定的培訓內容和考核。我們為新入職人員提供相關培訓，協助他們盡快熟悉院內環境、各項規章制度、工作流程及相關專業知識。針對本集團的養老業務，急救知識尤為重要，因此我們實行嚴格的績效考核，主要包括評核員工的工作態度、能力，而考核內容涉及急救知識、護理理論、急救藥物應用及舉辦健康知識講座等。本集團多名員工持有專業資格證書，包括助理社會工作師、老年人能力評估師、醫療護理員證及消防消控室中級證等。2025年，一名員工於蕪湖市第三屆職業技能大賽暨全市民政行業職業技能大賽（養老護理員賽）中榮獲優勝獎，彰顯團隊的專業實力與服務水準。

為了構建本集團的人才競爭優勢，本集團的培訓不僅為提升工作效率，更反映出其對長者安全的嚴肅態度及責任。蕪湖福齡金太陽長者照顧中心於報告期內每月定期為員工提供一系列培訓，以提高員工的應急處理能力及加強對長者安全的保障。其中包括針對《中華人民共和國安全生產法》的培訓、消防培訓等。



## PEOPLE-ORIENTED ON EMPLOYEE GROWTH AND DEVELOPMENT •

### 以人為本 • 員工成長和發展

#### Case Demonstration: Wuhu Fuling Golden Sun Geriatric Care Center Professional Nursing Training

案例展示：蕪湖福齡金太陽長者照顧中心專業護理培訓

During the Reporting Period, Wuhu Fuling Golden Sun Geriatric Care Center provided employees with regular monthly professional nursing training sessions covering daily care skills and emergency response capabilities. In terms of daily care, the training programmes encompassed techniques such as dressing and undressing assistance, bed-based foot baths, repositioning of bedridden residents, oral care, personal hygiene care, and blood glucose monitoring, ensuring that care workers are equipped to deliver safe and comfortable care to elderly residents. In terms of emergency response, employees received training in the Heimlich manoeuvre, learning how to handle emergency situations involving choking or airway obstruction by a foreign body, thereby enhancing their emergency response capabilities and providing comprehensive protection for the safety and well-being of elderly residents.



蕪湖福齡金太陽長者照顧中心於報告期內每月定期為員工提供專業護理培訓，內容涵蓋日常照護技能及應急處理能力。日常照護方面，培訓項目包括穿脫衣物技巧、床上足浴、臥姿調整、口腔護理、個人衛生護理及血糖監測等，確保護理員能為長者提供安全、舒適的照護服務。應急處理方面，員工接受哈姆立克急救法培訓，學習應對哽塞或異物阻塞氣道的緊急情況，提升應急反應能力，全面保障長者安全與健康。

### LABOR STANDARDS

We believe that complying with labor regulations and safeguarding workers' rights and interests are key parts of corporate social responsibility. We adhere to strict labor standards and adopt a "zero tolerance" attitude towards child labor or forced labor. The Group strictly complies with relevant laws and regulations, including but not limited to:

- Law of the PRC on the Protection of Minors;
- Provisions on the Prohibition of Using Child Labor;
- Labor Law of the PRC; and
- Labor Contract Law of the PRC.

We enter into a "Labor Contract" with our employees based on the principles of equality, voluntariness, and consensus. Each of the obligations is clearly stipulated in the "Labor Contract" to safeguard the legal rights and interests of both parties. Both parties have their own autonomy to either establish or terminate the employment relationship.

### 勞工準則

本集團深信遵守勞動法規和維護勞動者權益是企業社會責任的關鍵部分。我們秉持嚴格的勞工準則，對童工或強制勞工採取「零」容忍政策。本集團嚴格遵守相關法律及法規，包括但不限於：

- 《中華人民共和國未成年人保護法》；
- 《禁止使用童工規定》；
- 《中華人民共和國勞動法》；及
- 《中華人民共和國勞動合同法》。

我們本著平等自願、協商一致的原則與員工簽訂《勞動合同》。《勞動合同》中明確規定各項義務，維護雙方的合法權益。雙方在建立及解除勞動關係方面都具有自主權。



## PEOPLE-ORIENTED ON EMPLOYEE GROWTH AND DEVELOPMENT •

### 以人為本 • 員工成長和發展

The Group strictly prohibits the recruitment of child labour and the use of forced labour, and employs multiple measures to eliminate the possibility of child labour employment at the source of recruitment. To protect the rights and interests as well as the safety of minors, we will carefully inspect and verify the identity documents of the new entrants during the recruitment process to ensure that the legal working age is met. Candidates who do not meet the requirements will not be hired. If child labor or forced labor cases are discovered, we will treat them seriously, dismiss the relevant child labor or forced labor and hold the responsible department accountable for the case.

During the Reporting Period, the Group was not aware of any material violation of laws and regulations relating to the prevention of child labor or forced labor that would have a significant impact on the Group.

本集團明確禁止招聘童工及使用強制勞工，並通過多種方式從招聘源頭杜絕童工僱傭的可能性。為保障未成年人的權益和安全，我們在招聘過程中仔細核對和檢查新入職員工的身份證明文件，確保其達到法定工作年齡，所有不符合規定者均不予錄用。如發現任何童工或強制勞工情況，我們將嚴肅處理，立即解僱相關童工或強制勞工，並對相關部門負責人進行問責。

報告期內，本集團並不知悉任何嚴重違反有關防止童工或強制勞工的法律及法規，且對本集團造成重大影響的事宜。



# COMMITMENT TO ENVIRONMENTAL PROTECTION ON ENERGY CONSERVATION AND EMISSION REDUCTION

## 環保承諾 • 節能減排

Guided by the principles of green operations, we are committed to achieving low-carbon and sustainable development, actively implementing environmental measures across areas including resource management, waste treatment, and climate change response, while promoting the wider adoption of green principles. Although the Group's business has no significant impact on the environment, we actively promote environmental protection measures, promote energy saving and emission reduction, and continue to seek innovative ways to reduce our carbon footprint and contribute to environmental protection. Among them, Vissam Prosperity has obtained ISO 14001:2015 Environmental Management System Certification.

我們以綠色運營為指引，致力於實現低碳可持續發展，在資源管理、廢棄物處理及氣候變化應對等領域積極採取環保措施，推動綠色理念的普及。縱使本集團業務對環境不造成重大影響，我們積極推動環境保護措施，推動節能減排，並持續尋求創新方法減輕我們的碳足跡，為環保出一分力。其中，北京偉森已獲ISO 14001:2015環境管理體系認證。



The Group strictly complies with environmental laws and regulations, including but not limited to:

- Environmental Protection Law of the PRC;
- Law of the PRC on the Prevention and Control of Environment Pollution by Solid Wastes;
- Atmosphere Pollution Prevention and Control Law of the PRC; and
- Water Pollution Prevention and Control Law of the PRC.

During the Reporting Period, the Group was not aware of any material violation of laws and regulations relating to air and greenhouse gas emissions, discharge to water and land, and generation of hazardous and non-hazardous wastes that would have a significant impact on the Group.

本集團嚴格遵守環境相關的法律及法規，包括但不限於：

- 《中華人民共和國環境保護法》；
- 《中華人民共和國固體廢物污染環境防治法》；
- 《中華人民共和國大氣污染防治法》；及
- 《中華人民共和國水污染防治法》。

報告期內，本集團並不知悉任何嚴重違反有關廢氣及溫室氣體排放、向水及土地的排污、有害及無害廢棄物的產生等的法律及法規，且對本集團造成重大影響的事宜。



## EMISSIONS

### Air and Greenhouse Gases Emissions

During the Reporting Period, the data of air emissions of the Group is as follows:

	Unit 單位	2025 2025年
<b>Air emissions</b> 廢棄排放		
Nitrogen oxides 氮氧化物	Kg 千克	184.05
Sulfur oxides 硫氧化物	Kg 千克	12.71
Particulate matter 顆粒物	Kg 千克	16.38

The Group is committed to the reduction of air and greenhouse gas emissions by implementing a series of emission reduction measures in offices and geriatric care institutions, including but not limited to:

- Strictly manage the vehicle utilization system, plan appropriate driving routes and the number of passengers to improve the utilization efficiency of the vehicle;
- Encourage employees to travel by public transportation as much as possible;
- Eliminate vehicles that do not comply with environmental protection standards and those having high fuel consumption in a timely manner; and
- Install fume purifying devices to filter the cooking exhaust fumes.

At the same time, the Group has adopted various measures to conserve electricity and improve energy efficiency. For details of these measures, please refer to the section headed "Use of Resources".

We will continue to aim to reduce emissions and greenhouse gas emissions in the future, and explore more feasible emission-reduction measures.

For the disclosure of greenhouse gas emissions data, please refer to the "Metrics and Targets" section.

## 排放物

### 廢氣及溫室氣體排放

報告期內，本集團的廢氣排放數據如下：

本集團致力於減少廢氣及溫室氣體排放，並在辦公室和養老機構實施一系列減排措施，包括但不限於：

- 嚴格管理車輛使用制度，規劃適當行駛路線及人數以提高車輛使用效率；
- 鼓勵員工盡量使用公共交通工具；
- 適時淘汰不符合環保標準、油耗高的車輛；及
- 安裝油煙淨化器過濾煮食油煙廢氣。

同時，本集團通過多項措施來節約用電及提高能源效益。相關詳細措施請參閱「資源使用」章節。

我們未來將繼續以減少排放物及溫室氣體為目標，探索更多可行的減排措施。

有關溫室氣體排放數據的披露，請參閱「指標與目標」一節。



### Disposal of Hazardous and Non-Hazardous Waste

The Group remains steadfast in its commitment to the principles of sustainable development and actively works with the community to reduce waste to relieve pressure on landfills, which is an effective way to protect the environment and the health of residents. We embrace the concept of reducing waste at source and recycling and are committed to fostering a culture of recycling in the Company, as well as implementing processes for the collection and proper disposal of waste to minimize the generation of waste.

During the Reporting Period, the data of waste discharged of the Group is as follows:

### 有害及無害廢棄物處理

本集團始終堅定貫徹可持續發展理念，積極投身於社區的合作，共同減少廢棄物，緩解堆填區的壓力，能有效保護環境及保障居民健康。我們奉行源頭減廢和循環利用的概念，致力培養公司回收文化，並落實廢棄物收集和妥善處理的流程，以減少廢棄物的產生。

報告期內，本集團的廢棄物相關數據如下：

	Unit 單位	2025 2025年
<b>Non-hazardous Waste</b>		
<b>無害廢棄物</b>		
Total amount 總量	Tonnes 公噸	844.37
Intensity 密度	Tonnes/m <sup>2</sup> of gross floor area 公噸／平方米建築面積	0.02
<b>Hazardous Waste</b>		
<b>有害廢棄物</b>		
Total amount 總量	Tonnes 公噸	5.16
Intensity 密度	Tonnes/m <sup>2</sup> of gross floor area 公噸／平方米建築面積	0.00013

In order to reduce waste generation at the source, we have established a comprehensive waste management system and strictly implemented the policy of office waste classification in response to the “Beijing Municipal Regulations on the Management of Municipal Solid Waste ”. Wastes would be classified as recyclable waste, kitchen waste, hazardous waste and other waste. We organized relevant departments and responsible staff to handle the classification of domestic waste. The Administration and Human Resources Department is responsible for waste classification promotion, and facility management and maintenance to enhance employees’ awareness of environmental protection. All employees should sort waste properly at the source. The Company puts classification bins at the staircase of each office floor according to the categories mentioned above. Responsible staff take charge of keeping clean, taking final categorization of wastes, and putting the classified waste into the corresponding trash bin. To effectively curb paper waste, we actively encourage employees to implement double-sided printing and promote the reuse of used paper, fully embracing the environmental principle of making the most of every resource.

為從源頭降低廢棄物生成量，我們已制定完善的垃圾管理制度，並嚴格實施辦公室垃圾分類政策，積極響應《北京市生活垃圾管理條例》，將垃圾分類成可回收垃圾、廚餘垃圾、有害垃圾及其他垃圾。我們組織相關職能部門和負責人處理生活垃圾分類。行政部負責垃圾分類宣傳、設備設施管理與維護，以加強員工的環境保護意識。每一名員工均需要從垃圾產生源頭做好垃圾分類工作。本公司在辦公區的每層樓梯間根據上述提及的類別設有分類垃圾桶。分揀負責人負責每層保潔和垃圾最後的分揀工作，及將垃圾分類投入相對應的垃圾桶內。為有效遏制紙張浪費，我們積極鼓勵員工進行文件雙面打印，推動已用紙張循環再利用，全力踐行物盡其用的環保理念。



Wasted ink cartridges produced in offices and medical wastes generated in the geriatric business are the main sources of hazardous waste for the Group. We properly process hazardous waste in accordance with relevant national laws and regulations, including but not limited to:

- Regulations on the Administration of Medical Wastes;
- Standard of Packaging Bags, Containers and Warning Symbols Specific to Medical Waste; and
- Jinghu District Medical Waste Treatment Interim Measures.

The Group has engaged certified third-party recyclers to ensure the proper disposal of hazardous waste. We set up special storage spots to collect all kinds of medical waste. All medical wastes are strictly disinfected and placed in double-layer thick plastic bags designed for medical wastes as according to regulations. Qualified third-party recyclers will collect, transport and dispose of hazardous waste regularly.

We will continue to aim at reducing waste in the future and explore more feasible waste reduction measures.

### Sewage Discharge

The Group's wastewater primarily originates from domestic sewage and hospital effluent. To ensure the proper treatment of wastewater, we have properly treated sewage through targeted measures. Domestic sewage is collected by the urban drainage pipe network and transported to the sewage treatment plant for handling. Hospital sewage is treated in accordance with the requirements of the "Technical Guidelines for Hospital Sewage Treatment", and needs to adopt the primary treatment process – the chlorine disinfection process. In order to improve and enhance the operation process, we require the operators of sewage treatment facilities to receive relevant training.

辦公室的廢棄墨盒及養老業務產生的醫療廢棄物是本集團的主要有害廢棄物來源。我們按照國家相關法律及法規將有害廢棄物進行妥善處理，包括但不限於：

- 《醫療廢物管理條例》；
- 《醫療廢物專用包裝袋、容器和警示標誌標準》；及
- 《鏡湖區醫療廢物處理暫行辦法》。

集團已委聘具備認可資格的第三方回收商，對有害廢棄物進行妥善處置。我們設有收集各類醫療廢物的專用存放點。所有醫療廢棄物將進行嚴格消毒並按照規定將其裝入雙層厚實醫療垃圾專用塑料袋。合資格的第三方回收商會定期收集、運輸及處置醫療廢棄物。

我們未來將持續減少廢棄物為目標，並持續探索更多可行的減廢措施。

### 污水排放

本集團的廢水主要來源於生活污水及醫院污水。為確保廢水得到妥善處理，我們已通過針對性措施妥善處理污水。生活污水由城市排水管網匯集並輸送到污水處理廠進行處理。而醫院污水方面則按照《醫院污水處理技術指南》的要求執行，並需採用主要的處理流程—氯消毒工藝。為改善及健全崗位操作流程，我們要求污水處理設施的操作人員進行相關培訓。



## USE OF RESOURCES

### Energy

The energy consumption of the Group is mainly consists of unleaded petrol, natural gas and purchased electricity. As the Group's business does not involve production, it does not consume any packaging materials for finished products. During the Reporting Period, the energy consumption data of the Group is as follows:

	Unit 單位	2025 2025年
<b>Direct Energy<sup>1</sup></b> 直接能源 <sup>1</sup>		
Unleaded petrol 無鉛汽油	MWh 千個千瓦時	428.51
Natural gas 天然氣	MWh 千個千瓦時	1,413.05
<b>Indirect Energy</b> 間接能源		
Purchased electricity 外購電力	MWh 千個千瓦時	4,115.47
Total energy consumption 能源總耗量	MWh 千個千瓦時	5,957.03
Intensity 密度	MWh/m <sup>2</sup> of gross floor area 千個千瓦時/ 平方米建築面積	0.15

### 資源使用

#### 能源

本集團的能源消耗主要是無鉛汽油、天然氣及外購電力。由於本集團的業務並無生產，故不涉及製成品包裝物料的使用。報告期內，本集團的能源消耗數據如下：

We attach great importance to energy conservation and emission reduction, and have laid the foundation for a cleaner and greener model of operation through a number of measures, including but not limited to:

- Turn off all electrical equipment when getting out of work to minimize electricity consumption;
- Use energy-saving lamps whenever possible and cultivate the habit of turning off the lights when leaving the office;
- Place labels on office equipment, such as reminding employees to turn off all electrical appliances before leaving offices or after use; and
- The temperature of the air conditioning is controlled at 26°C, and the air conditioning in geriatric care institutions will be turned off between 9:00 a.m. to 11:00 a.m. and 2:00 a.m. to 4:00 a.m.

我們高度重視節能減排，通過多項措施為更潔淨、更綠色的運營模式奠定基礎，包括但不限於：

- 下班時關閉所有用電設備，以減少電力消耗；
- 盡量採用節能燈具，培養員工在離開辦公室時關燈的習慣；
- 在辦公室設備上貼上標貼，提醒員工在離開前或使用後關閉電器設備；及
- 空調溫度控制在26°C，養老機構在日間9-11時及晚間2-4時關掉空調。

<sup>1</sup> Direct energy consumption of the Group includes the consumption of Emission Source: petrol and compressed natural gas. The conversion factors for Emission Source: petrol adopted are based on the conversion of fuel data to MWh issued by Carbon Disclosure Project ( " CDP " ). For the consumption of compressed natural gas, the conversion factor adopted is based on the Ministry of Ecology and Environment of the People's Republic of China.

<sup>1</sup> 本集團的直接能源消耗包括排放源：汽油及壓縮天然氣的消耗。針對排放源：汽油採用的換算因子，乃根據碳揭露計劃發佈的燃料數據換算為兆瓦時(MWh)之係數。壓縮天然氣的換算因子乃根據中華人民共和國生態環境部計算。



環保承諾 • 節能減排

We will continue to focus on improving energy efficiency and reducing energy consumption as our main objectives in the future, and explore more feasible energy-saving measures.

**Water**

The water usage of the Group is mainly for domestic use in business operations, which is provided by municipal water supply agencies. Our business, which involves the geriatric care industry, includes the establishment of residential care homes for the elderly, results in higher water consumption. During the Reporting Period, we have not encountered any problems in finding suitable water sources.

During the Reporting Period, the water usage data of the Group is as follows:

	Unit 單位	2025 2025年
Total water consumption 總耗水量	m <sup>3</sup> /m <sup>2</sup> 立方米	304,361.46
Intensity 密度	m <sup>3</sup> /m <sup>2</sup> of gross floor area 立方米/平方米建築面積	7.59

To improve our water efficiency, we have formulated a series of measures according to the nature and needs of our business, including but not limited to:

- Enhance the awareness of water saving among employees in daily business;
- Require employees to strictly avoid turning on the water tap for a long time, and turn off the tap consciously after use;
- Regularly inspect and maintain water equipment; and
- When damage is found, immediately notify the worker to repair it on the same day within 12 hours.

We will continue to aim at enhancing water efficiency and explore more feasible water conservation measures in the future.

我們未來將繼續以提高能源效益及減少能源消耗為主要目標，並探索更多可行的節能措施。

**用水**

本集團的用水主要來自業務運營的生活用水，由市政供水機構提供。當中業務涉及的養老產業設有安老院舍，故耗水量較高。報告期內，我們在求取適用水源上並無遇到任何問題。

報告期內，本集團的用水數據如下：

為提高用水效益，我們已根據業務性質及需要制定一系列措施，包括但不限於：

- 於日常業務中提升員工惜水概念；
- 嚴禁員工長流水，使用後須自覺關掉水龍頭；
- 定期檢查及維護用水設備；及
- 若發現設備損壞時會立即安排水工於當日12小時內進行維修。

我們未來將繼續以提升用水效益為目標，並探索更多可行的節水措施。



## ENVIRONMENT AND NATURAL RESOURCES

We regard environmental benefits as an integral part of our core corporate values. Guided by a culture of environmental protection and the conservation of natural resources, we strictly adhere to environmental laws and regulations, and actively strive to meet the expectations and standards of the industry and society with regard to sustainable development, thereby inspiring more enterprises and individuals to promote environmental protection together, and to continuously conserve and improve the environment.

### Green Product and Certifications

In light of increasingly scarce resources and mounting environmental challenges, the Group recognizes the significant impact of environmental risks on our business operations. We firmly believe that green operations are essential to the sustainable development of our enterprise. Although the business does not involve production and does not have a significant impact on the environment and natural resources, the Group is still committed to supporting global sustainability objectives through responsible operations. We have established and continued to improve the environmental management system to enhance our environmental performance in terms of the product life cycle. At the same time, we actively monitor our daily emissions and resource consumption to minimize the impact on the natural environment. Vissam Prosperity is engaged in the furniture sales business and has obtained a number of green certificates for its corporate management activities and products:

## 環境及天然資源

我們將環境效益作為企業核心價值的一部分。我們以環境保護和珍惜天然資源的文化為指引，嚴格遵守環境保護法律法規，並積極滿足行業與社會對可持續發展的期望與標準，致力宣揚環境保護以實現可持續發展，並在業界樹立環境保護的標竿，從而激勵更多企業和個人共同推動環境保護，持續保育及改善環境。

### 綠色產品及認證

隨著資源日益稀缺及環境問題日趨嚴峻，本集團深刻理解環境風險對業務營運的挑戰。我們深信綠色營運是企業可持續發展的關鍵。縱使業務不涉及生產，且對環境及天然資源並無造成重大影響，本集團仍致力於透過負責任的營運方式來支援全球的可持續發展目標。我們已建立及持續完善環境管理體系，從產品的生命周期方面提高環境績效，同時積極監測日常排放和資源消耗情況，務求將自然環境的影響減至最低。北京偉森從事傢俱銷售業務，公司管理活動及產品獲得多項綠色認證：



CEC-7005CVP-A/1 Low VOCs Furniture Product Certification – Wood Furniture Category  
低VOCs傢俱產品認證 – 木傢俱類



CEC-7016CVP A/2 Environmental Guardian Certification for Furniture Products – Wood Furniture Category  
傢俱產品環保衛士認證 – 木傢俱類



China Environmental Labeling Product Certification – Steel and Wood Furniture  
中國環境標誌產品認證 – 鋼木傢俱



GB/T 35607-2017 China Green Product Certification – Chairs, Comprehensive Wood Furniture, Metal Furniture  
GB/T 35607-2017中國綠色產品認證—椅類、綜合木傢俱類、金屬傢俱類

### Use of Green and Eco-Friendly Materials to Meet the Needs of Cleaning

As public expectations regarding hygiene and cleanliness standards continue to rise, Vissam Prosperity recognizes the impact of product materials on the environment and the safety and health of users, and is committed to meeting the dual needs of the customers for health and environmental protection. Our plastic chairs for sale are made of all-plastic structure, using polypropylene (PP5), which does not release toxic substances and 100% recyclable as material, can withstand even high temperatures and can be sterilized with 75% alcohol, in order to meet the needs of users for frequent cleaning and disinfection and at the same time minimize the negative impact on their health.

### 採用綠色環保材料迎合清潔需求

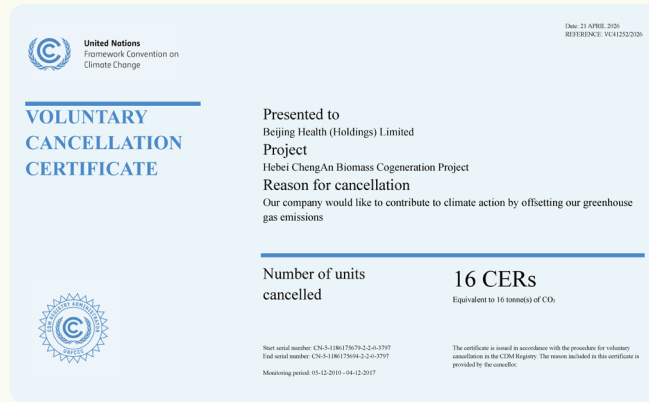
隨著公眾對衛生與清潔標準的要求日益提升，北京偉森深明產品物料對環境及使用者安全健康的影響，因此致力滿足客戶對健康與環保的雙重需求。旗下銷售的塑膠椅採用全塑膠架構，使用不會釋放有毒物質及可100%回收的聚丙烯(PP5)作為物料，更可以耐受高溫及使用75%的酒精消毒，務求在符合用家常清潔、常消毒需求的同時，對其健康的負面影響減至最低。

### Promotion of Carbon Reduction Projects

While actively investing in clean energy and implementing a range of energy-saving and efficiency-enhancing measures, enterprises can also effectively offset their remaining carbon emissions through the sponsorship of carbon reduction projects. Therefore, we have chosen to purchase carbon credits to reduce its carbon footprint by offsetting the greenhouse gas emissions generated by its operating activities. The carbon offset project we have utilized is the Hebei ChengAn Biomass Cogeneration Project (Project ID: 3797) from the United Nations Clean Development Mechanism ( “ CDM ” ), which focuses on generating electricity by utilizing local straw from cotton. The electricity generated from this project is sold to the Hebei Provincial Power Grid, replacing the capacity of coal-fired power plants. The project not only reduces greenhouse gas emissions but also promotes resource efficiency, environmental conservation, and socioeconomic benefits for local communities. The Certified Emission Reductions (CERs) acquired from this project were instrumental in achieving carbon neutrality for the 19th Asian Games held in Hangzhou in 2022.

### 推動碳減排項目

企業在積極投資潔淨能源、落實各項節能增效措施的同時，亦可透過資助減碳項目，有效平衡剩餘的碳排放量。因此，我們選擇購買碳信用額，通過抵銷其運營活動產生的溫室氣體排放來減少其碳足跡。此碳信用來自聯合國清潔發展機制(「CDM」)的河北成安生物質熱電聯產專案(專案編號：3797)，該專案的重點是利用當地棉花秸秆發電。產生的電力會出售給河北省電網，取代了燃煤電廠的發電。該專案不僅減少了溫室氣體排放，還促進了當地社區的資源效率、環境保護和社會經濟效益。該專案獲得的核證減排量(CERs)用於幫助2022年在杭州舉行的第19屆亞運會實現碳中和。



## CLIMATE CHANGE

### (i) Governance

The Board oversees climate-related risks, opportunities, and other relevant matters through regular Board meetings to ensure that such risks are appropriately integrated into the Group’s strategy on an annual basis. The Board is responsible for appointing the ESG Working Group, both comprising senior management, to formulate and review climate-related strategies, coordinate climate-related initiatives, and report annually to the Board and relevant committees on material climate-related risks, opportunities, and progress against climate-related targets affecting the Group.

To ensure the Board’s effectiveness in overseeing climate-related strategies, the Board comprises members with relevant ESG expertise. Regular climate-related training is provided to enhance the Board’s understanding of emerging climate risks, regulatory developments, and industry trends. Where necessary, external experts may be engaged to provide professional advice in support of material decision-making.

In view of the Group’s business nature and operational complexity, climate-related performance metrics have not been incorporated into its remuneration policies.

## 氣候變化

### (一) 管治

董事會透過定期會議監督氣候相關的風險、機遇及其他相關事宜，以確保該等風險每年均被適當地納入本集團的策略之中。董事會負責委任由高級管理層組成的環境、社會及管治ESG工作小組，以制定及檢討氣候相關策略，協調氣候相關措施，並每年就影響本集團的重大氣候相關風險與機遇，以及達成氣候相關目標的進度，向董事會及相關委員會進行匯報。

為確保董事會監督氣候相關策略的成效，董事會成員具備相關的ESG專業知識。本集團會提供定期的氣候相關培訓，以加深董事會對新興氣候風險、監管發展及行業趨勢的了解。如有需要，亦會聘請外部專家提供專業意見，以支援重大決策。

鑑於本集團的業務性質及營運複雜度，氣候相關表現指標尚未被納入其薪酬政策之中。



**(ii) Strategy**

*Climate-related risk and opportunities*

The Group has identified physical risks associated with climate change and mitigated the impact on the business through the development of contingency plans and measures. Extreme weather events including typhoon and rainstorm will lead to damage to buildings at the operation site, significantly increasing the risk of injury to employees and customers. In the event of water leakage due to heavy rainfall, we immediately arrange for maintenance staff to carry out repair work to minimize the subsequent impact of water leakage. In addition, the increasing frequency of high temperature heat waves and low temperature cold spells in recent years has increased the risk of discomfort for the elderly or chronic patients. The Group's geriatric care institutions have implemented a number of measures in response to the high temperature heat wave and cold weather conditions, including but not limited to:

- Purchase cooling drugs in advance and distribute herbal tea, barley tea and other beverages to the elderly, as well as watermelon, mung bean soup and other cooling food;
- Install fans or air conditioners in every room of the elderly homes;
- The command group conducts regular checks on heat prevention measures by various departments in order to protect the elderly suffered from high temperature;
- Ensure that staffs acquired knowledge of warm keeping during the cold weather; and
- Equip every room of the elderly homes with central heating system in order to maintain a comfortable temperature.

As a responsible company, the Group is committed to addressing climate change and recognises its relevance to its business operations. The Group acknowledges the importance of proactively managing climate-related risks while capturing opportunities arising from the transition to a low-carbon economy. The Group also remains committed to complying with increasingly stringent regulatory requirements and fulfilling its climate-related disclosure obligations.

**(二) 策略**

*氣候相關風險和機遇*

本集團已識別氣候變化相關的實體風險，並通過制定應對方案及措施來減輕對企業的影響。颱風、暴雨等極端天氣事件會導致營運地點的建築物受損，大大提升了員工及客戶受傷的風險。當遇到因暴雨而造成漏水問題時，我們立刻安排維修人員進行修復工作，將漏水所帶來的後續影響減至最低。另外，近年來高溫熱浪及低溫寒冷天氣漸趨頻繁，加大了長者或長期病患不適的風險。本集團的養老機構已針對高溫熱浪及寒冷天氣的情況執行多項措施，包括但不限於：

- 預先採購降溫藥品，並向長者派發涼茶、大麥茶等飲品，以及西瓜、綠豆湯等降溫食品；
- 院舍內的每個房間亦會配置風扇或空調；
- 指揮小組定期檢查各部門的防暑措施，做好長者的防暑降溫工作；
- 確保員工均掌握充足的防寒保暖常識；及
- 為院舍內的每個房間配置中央暖氣，保持舒適的溫度。

作為一家負責任的企業，本集團致力應對氣候變化，並深明其與集團業務息息相關。本集團認識到主動管理氣候相關風險的重要性，同時積極把握低碳經濟轉型所帶來的機遇。本集團亦將繼續致力遵守日趨嚴格的監管要求，並履行其氣候相關的披露義務。



With reference to the HKEX Implementation Guidance and prevailing market practice, the Group has categorised climate-related risks into short-term (2030), medium-term (2050) and long-term (2080) time horizons. As no climate-related risks or opportunities were assessed to be material during the Reporting Period, the Group has not formulated specific transition plans, investment or disposal plans, or capital deployment arrangements in this regard.

參考港交所的《環境、社會及管治框架下氣候信息披露的實施指引》及現行市場慣例，本集團將氣候相關風險的時間跨度劃分為短期(2030年)、中期(2050年)及長期(2080年)。由於在報告期內並未評估出任何重大的氣候相關風險或機遇，因此本集團尚未就此制定具體的轉型計劃、投資或處置計劃，以及資本配置安排。

Risk and Opportunities 風險與機遇	Description 描述	Impact 影響	Response 應對措施
<b>Physical Risk</b> 實體風險			
Acute risk 急性風險	Sudden, short-term extreme weather events such as heavy rainfall, typhoons, floods, storms or wildfires may cause immediate damage to corporate assets, employees and supply chains. 突發、短期的極端天氣事件(如暴雨、颱風、水浸、風暴或山火)可能對企業資產、員工及供應鏈造成即時破壞。	(a) Cash flow, access to finance or cost of capital 現金流、融資渠道或資本成本  Short term: Sudden decline in operating cash flows due to asset damage, production disruption and logistics interruption, coupled with increased repair costs. 短期：由於資產受損、生產中斷及物流受阻，導致營運現金流突然下降，加上維修成本增加。  Medium term: Higher insurance deductibles and increased cost of capital driven by higher risk premiums. 中期：保險免賠額上升，以及風險溢價上升導致資本成本增加。	<ul style="list-style-type: none"> <li>Strengthen the climate resilience of key facilities through flood protection, structural reinforcement and emergency response planning. 透過防洪、結構加固及應急響應計劃，加強主要設施的氣候韌性。</li> <li>Enhance supply chain contingency planning by diversifying suppliers and logistics routes in high-risk regions. 透過在高風險地區實現供應商及物流路線多元化，加強供應鏈的應變計劃。</li> <li>Review and optimise insurance coverage for climate-related asset damage and business interruption. 檢討並優化針對氣候相關資產損壞及業務中斷的保險覆蓋範圍。</li> </ul>



<b>Risk and Opportunities</b> 風險與機遇	<b>Description</b> 描述	<b>Impact</b> 影響	<b>Response</b> 應對措施
		<p>(b) Business model and value chain 業務模式與價值鏈</p> <p>Current impact: No material impact identified. 目前影響：未發現重大影響。</p> <p>Anticipated impact: May require reconfiguration of production capacity and enhancement of supply chain contingency arrangements. 預期影響：可能需要重新配置生產能力並加強供應鏈的應變安排。</p> <p>Concentration: Production facilities, warehouses and key supply chain nodes located in high-risk areas. 重點：位於高風險地區的生產設施、倉庫及主要供應鏈節點。</p>	
		<p>(c) Financial position and performance 財務狀況與表現</p> <p>Current impact: Exposure to asset impairment, inventory damage or insufficient insurance coverage. 目前影響：面臨資產減值、庫存受損或保險覆蓋不足的風險。</p> <p>Anticipated impact: Without resilience investments, further downward adjustment of asset carrying values may occur; medium-term capital expenditure is required for facility reinforcement and supply chain diversification. 預期影響：若缺乏提升韌性的投資，可能導致資產賬面值進一步下調；中期需要增加資本開支以加固設施及實現供應鏈多元化。</p>	
		<p>(d) Assets or business activities 資產或業務活動</p> <p>Not applicable for the current year. 本年度不適用。</p>	



<b>Risk and Opportunities</b> 風險與機遇	<b>Description</b> 描述	<b>Impact</b> 影響	<b>Response</b> 應對措施
<b>Transition Risks</b> 轉型風險			
Policy and legal risk 政策與合規風險	Stricter regulations and policies on carbon emissions, energy efficiency and product standards may result in higher compliance costs, carbon taxes or legal liabilities. 針對碳排放、能源效益及產品標準的法規與政策日趨嚴格，可能導致合規成本增加、引發碳稅或法律責任。	(a) Cash flow, access to finance or cost of capital 現金流、融資渠道或資本成本  Short term: Increased compliance costs and carbon tax or carbon trading expenses. 短期：合規成本以及碳稅或碳交易開支增加。  Medium term: Sustained increases in operating costs and financing costs. 中期：營運成本及融資成本持續上升。  (b) Business model and value chain 業務模式與價值鏈  Current impact: Adjustment of technology pathways and production models required. 目前影響：需要調整技術路線及生產模式。  Anticipated impact: Potential redesign of product portfolios or exit from certain high-emission businesses. 預期影響：可能需要重新設計產品組合，或退出部分高排放業務。  Concentration: High-emission products and energy-intensive value chains. 重點：高排放產品及能源密集型價值鏈。	<ul style="list-style-type: none"> <li>Monitor regulatory developments and proactively align internal policies with emerging climate-related laws and standards.                      密切監察監管發展，並主動使內部政策與新興的氣候相關法律及標準保持一致。</li> <li>Implement energy efficiency and emissions reduction initiatives to mitigate exposure to carbon pricing and compliance costs.                      落實能源效益及減排措施，以減輕碳定價及合規成本帶來的風險。</li> </ul>



<b>Risk and Opportunities</b> 風險與機遇	<b>Description</b> 描述	<b>Impact</b> 影響	<b>Response</b> 應對措施
		<p>(c) Financial position and performance 財務狀況與表現</p> <p>Current impact: Additional compliance-related expenditures incurred. 目前影響：產生額外的合規相關開支。</p> <p>Anticipated impact: Certain assets may face early retirement or impairment. 預期影響：部分資產可能面臨提早報廢或減值。</p> <p>(d) Assets or business activities 資產或業務活動</p> <p>Not applicable for the current year. 本年度不適用。</p>	



*Climate resilience*

We conducted scenario analysis in 2025 to assess the resilience of our business model under different climate pathways, with the following inputs and results:

*氣候韌性*

我們已於2025年進行與氣候相關的情景分析來評估我們的業務模式於不同氣候路徑下氣候韌性，其輸入數據及結果如下：

Scope and Boundary 範圍	
<ul style="list-style-type: none"> <li>Consistent with the reporting scope of this ESG Report 與本ESG報告之範圍一致</li> </ul>	
Scenarios Used 採用情境	
Name & Description 名稱及描述	<p>Network for Greening the Financial System ( “ NGFS ” ) Current Policies (representing a pessimistic pathway) – This scenario assumes that only currently implemented policies are preserved, leading to high physical risks. 綠色金融網絡(「NGFS」)現行政策情景(代表悲觀情景)–此情景假設僅維持現行已實施的政策，將帶來較高的實體風險。</p> <p>NGFS Net Zero 2050 (representing an optimistic pathway) – This scenario limits global warming to 1.5°C through stringent climate policies and innovation, reaching global net zero carbon dioxide emissions around 2050. NGFS 2050年淨零排放(代表樂觀情景)–此情景通過嚴格的氣候政策與技術創新，將全球升溫幅度限制在1.5°C以內，並於2050年前後實現全球二氧化碳淨零排放。</p>
Rationale 理據	<ul style="list-style-type: none"> <li><b>Industry sector</b> – The NGFS framework is relevant across a broad spectrum of sectors, including the Group’s operations. 行業領域–NGFS框架適用於廣泛行業，涵蓋本集團之營運業務。</li> <li><b>Types of risks to be assessed</b> – The scenarios developed take reference from NGFS, which covered the transition risk we assessed. 評估風險類型–所開發的情境參考NGFS框架，已涵蓋我們所評估的轉型風險。</li> <li><b>Scenarios with high contrast</b> – The NGFS Current Policies and Net Zero 2050 scenarios are equivalent to &gt;3°C and &lt;1.5°C, respectively, as stated in the Paris Agreement. 具高對比度的情境–NGFS現行政策及NGFS 2050年淨零排放情景分別對應《巴黎協定》中升溫&gt;3°C及&lt;1.5°C之情境。</li> <li><b>Time horizons determined and alignment to latest international agreements</b> – The scenarios selected provide time frames (Up to 2100) that align with our strategic planning time horizon (Up to 2050) and align with the Paris Agreement (Up to 2050). 設定時間範圍並與最新國際協議接軌–所選情境提供之時間範圍(至2100年)與本集團策略規劃的時間範圍(至2050年)及《巴黎協定》(至2050年)目標一致。</li> </ul>

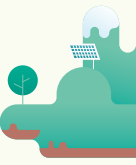


Time Horizons 時間範圍	
Short-term 短期	2030 2030年
Medium-term 中期	2050 2050年
Key Assumptions 假設條件	
<ul style="list-style-type: none"> <li>The analysis was conducted in 2025 and expected the parameters (e.g. the greenhouse gas emissions and operating costs) to remain broadly comparable over the time horizons. 此分析於2025年進行，並預期相關參數(如溫室氣體排放及營運成本)將於時間範圍內保持大致相近。</li> </ul>	

Qualitative description

定性描述

Risks 風險	Relevance and Assumptions 相關性與假設	NGFS Net Zero 2050 NGFS 2050年淨零排放	NGFS Current Policies NGFS現行政策
Increased cost of carbon pricing 碳定價成本增加	<p>In assessing this risk, we considered the greenhouse gas emissions and operating costs for the reporting period ended 31 December 2025 as a reference point and assumed these parameters would remain broadly comparable over the time horizon.</p> <p>在評估此風險時，我們以截至2025年12月31日年報告期內的溫室氣體排放及營運成本作為參考基準，並假設這些參數於時間範圍內將保持大致相近。</p>	<p>Under this scenario, global climate policies are assumed to become more stringent over time, which may lead to higher carbon pricing levels. Such developments could increase the Group's operating costs if carbon pricing mechanisms become more widely implemented or strengthened.</p> <p>在此情景下，氣候政策預計將隨時間推移持續收緊，相關監管要求亦趨於嚴格，從而可能推動碳定價水平上升。一旦碳定價機制獲得更廣泛採用或進一步強化，本集團的營運成本或將因此顯著增加。</p>	<p>Under this scenario, climate policies are assumed to continue broadly in line with existing commitments. As a result, potential cost impacts associated with carbon pricing are expected to be comparatively more moderate, although policy developments remain uncertain.</p> <p>於此情景下，氣候政策預計將大致沿現有承諾方向持續推進。因此，與碳定價相關的潛在成本影響預計將相對溫和，唯政策發展仍存在不確定性。</p>



Risks 風險	Relevance and Assumptions 相關性與假設	NGFS Net Zero 2050 NGFS 2050年淨零排放	NGFS Current Policies NGFS現行政策
	<p>The assessment is subject to uncertainties, including future policy developments, carbon market conditions and technological advancements. The potential impacts in the short term and medium term are assumed to be broadly similar. Nevertheless, we will explore ways to quantify the impacts in the future.</p> <p>本評估受多項不確定因素影響，包括未來政策發展、碳市場狀況及技術進步等。短期及中期的潛在影響假設大致相若。儘管如此，我們將探索於未來對相關影響進行量化的方法。</p> <p>We will continue to monitor regulatory developments and explore opportunities to reduce greenhouse gas emissions.</p> <p>我們將持續監察監管動態及探索減少溫室氣體排放的機會。</p>		



### (iii) Risk Management

The Group integrates climate-related risks and opportunities into our overarching risk management framework to ensure they are systematically identified, assessed, managed, and monitored.

On an annual basis, the Group conducts an Enterprise Risk Assessment covering our Reporting Scope. We identify climate-related risks and opportunities by benchmarking against global sustainability trends, peer disclosures, and leading frameworks, including:

- SASB Standards and the MSCI ESG Industry Materiality Map;
- The World Economic Forum Global Risks Report 2025; and
- The Recommendations of the Task Force on Climate-related Financial Disclosures (TCFD).

Each identified risk is assessed based on its likelihood and potential impact, taking into account the Group's adaptive capacity and the resources required for recovery. For specific climate-related risks, including increased costs associated with carbon pricing and rising electricity expenses, the Group has adopted scenario analysis to evaluate potential financial impacts. To prioritise these risks, a quantitative scoring model developed by external consultants is applied and subsequently reviewed and refined by senior management to ensure alignment with operational realities and business context.

The Group manages prioritized risks in accordance with our established risk appetite through four primary strategies: mitigation, transfer, acceptance, and control. We periodically review our risk management processes and methodology to ensure continued effectiveness. During the Reporting Period, there were no material changes to our risk management processes compared to the previous year.

### (三) 風險管理

本集團將氣候相關風險與機遇納入整體的風險管理框架，以確保該等風險與機遇得到系統性的識別、評估、管理及監察。

本集團每年開展涵蓋本報告範圍的企業風險評估。我們透過對標全球可持續發展趨勢、同業披露及領先框架，識別氣候相關風險與機遇，其中包括：

- 永續會計準則委員會(SASB)的準則及MSCI ESG行業重要性地圖；
- 世界經濟論壇《2025年全球風險報告》；及
- 氣候相關財務披露工作小組(TCFD)的建議。

每個已識別的風險均基於其發生的可能性及潛在影響進行評估，同時考慮本集團的適應能力及復原所需之資源。針對特定的氣候相關風險，包括與碳定價相關的成本增加以及電費上升，本集團已採用情境分析來評估其潛在財務影響。為對該等風險進行優先排序，本集團應用了由外部顧問開發的量化評分模型，隨後由高級管理層進行檢討及完善，以確保其符合營運實際情況及業務背景。

本集團根據既定的風險偏好，透過四大主要策略(即緩解、轉移、接受及控制)來管理已排定優先次序的風險。我們定期檢討風險管理流程與方法，以確保其持續有效。報告期間，我們的風險管理流程與去年相比概無重大變動。



**(iv) Metrics and Target**

*Greenhouse Gas (GHG) Emissions*

Our Scope 1 greenhouse gas emissions are mainly from fuel consumption by vehicles; Scope 2 greenhouse gas emissions are from purchased electricity. Emissions are calculated according to the GHG Protocol Corporate Accounting and Reporting Standard (2004). The Group has adopted the operational control approach for our organizational boundary, as it provides the most direct access to primary data. Our emission data is as follows:

	Unit 單位	2025 2025年
<b>Greenhouse Gas (GHG) Emissions<sup>1</sup></b>		
<b>溫室氣體排放<sup>1</sup></b>		
Direct emissions (Scope 1) <sup>2</sup> 直接排放(範圍1) <sup>2</sup>	Tonnes of CO <sub>2</sub> e 公噸二氧化碳當量	408.10
Energy indirect emissions (Scope 2) (location-based) <sup>3</sup> 能源間接排放(範圍2)(基於地域) <sup>3</sup>	Tonnes of CO <sub>2</sub> e 公噸二氧化碳當量	2,374.61
Total emissions (Scope 1 and Scope 2) <sup>3</sup> 總排放量(範圍1及2) <sup>3</sup>	Tonnes of CO <sub>2</sub> e 公噸二氧化碳當量	2,782.71
Intensity 密度	Tonnes of CO <sub>2</sub> e/m <sup>2</sup> of gross floor area 公噸二氧化碳當量/平方米建築面積	0.07
Other indirect GHG emissions (Scope 3) <sup>4</sup> 其他間接排放(範圍三) <sup>4</sup>	Tonnes of CO <sub>2</sub> e 公噸二氧化碳當量	249.38

<sup>1</sup> The calculation standards and methodologies for GHG emissions are based on "Appendix: Reporting Guidance on Environmental KPIs" of "How to Prepare an ESG Report" by HKEX and the Greenhouse Gas Protocol.

<sup>2</sup> Scope 1 emissions included direct GHG emissions from Emission & Removal Source: the combustion of fuels in stationary and mobile sources. The Emission Factors adopted are based on "Appendix 2: Reporting Guidance on Environmental KPIs" published by the HKEX and guidance from the U.S. Environmental Protection Agency. The Global Warming Potential ("GWP") rates from the IPCC Sixth Assessment Report (AR6).

<sup>3</sup> Scope 2 emissions included indirect GHG emissions from the consumption of purchased electricity. The emission factor of purchased electricity for Hong Kong-based operations referenced the latest emission intensity published by CLP Power Hong Kong Limited; the emission factor for Chinese Mainland-based operations referenced the Ministry of Ecology and Environment of the People's Republic of China.

<sup>4</sup> Due to the complexity of Scope 3 emissions and the broad range of categories involved, current disclosure is limited to cover Category 1: Purchased Goods and Services (Freshwater), Category 5: Waste generated in operations (Sewage and Paper) and Category 6: Business travel (flight) as defined by the GHG Protocol. Emission factor referred to UK Defra: Government Conversion Factors for Company Reporting of Greenhouse Gas Emissions, and the Hong Kong Drainage Services Department, the Hong Kong Water Supplies Department, and the Guidelines to Account for and Report on Greenhouse Gas Emissions and the Environmental Protection Department and the Electrical and Mechanical Services Department of the Hong Kong Special Administrative Region Government.

**(四) 指標與目標**

*溫室氣體排放*

我們的範圍一溫室氣體排放主要來自於車輛的燃料消耗；範圍二溫室氣體排放來自外購電力。排放量乃根據《溫室氣體核算體系：企業核算與報告標準》(2004年)計算。本集團就組織邊界採用了營運控制法，因其能最直接地獲取原始數據。我們的排放數據如下：

<sup>1</sup> 溫室氣體排放的計算標準及方法乃根據香港聯交所發佈的《如何編備環境、社會及管治報告》之「附錄二：環境關鍵績效指標匯報指引」及《溫室氣體核算體系》計算。

<sup>2</sup> 範圍一排放為直接溫室氣體排放，包括來自排放源：固定及流動源燃燒燃料。所採用的排放因子根據香港聯交所發佈的「附錄二：環境關鍵績效指標匯報指引」及美國國家環境保護局的指引。全球變暖潛能值則參考聯合國政府間氣候變化專門委員會第六次評估報告。

<sup>3</sup> 範圍二排放包括來自消耗購入電力的間接溫室氣體排放。在香港進行業務而購入的電力排放因子參考中電電力有限公司發佈的最新排放強度；中國內地業務的排放因子參考自中華人民共和國生態環境部所發佈的文件。

<sup>4</sup> 由於範圍三排放的複雜性及其涵蓋的類別廣泛，目前的披露僅限於《溫室氣體核算體系》所界定的類別1：購買的商品和服務(淡水)、類別5：運營過程中產生的廢棄物(污水及紙張)及類別6：差旅(航空)的排放。採用的排放因子參考自英國能源安全暨淨零排放部、香港渠務署、香港水務署及香港特別行政區政府環境保護署及機電工程署。



*Climate-related targets*

We actively respond to the national “Dual Carbon” targets and Hong Kong’s Climate Action Blueprint 2050, encouraging employees to embrace energy conservation. During the Reporting period, the Group has set a target internally to participate in at least one climate-related activity or initiative annually. Through stakeholder collaboration, we will support energy conservation, emissions reduction, and decarbonization efforts. We will also identify environmentally impactful activities and implement improvement measures to mitigate climate-related risks. The ESG Working Group oversees progress and engages professional advisors when necessary. During the Reporting Period, we participated in the Energy Saving Charter of the Environment and Ecology Bureau of Hong Kong, demonstrating our commitment to emissions reduction and accelerating the transition to a low-carbon future.

氣候相關目標

我們積極響應國家「雙碳」目標及《香港氣候行動藍圖2050》，鼓勵員工實踐節能。報告期間，本集團已於內部制定目標，每年參與至少一項氣候相關活動或倡議。透過與持份者合作，我們將支持節能、減排及脫碳工作。我們亦將識別對環境造成影響的活動，並實施改善措施，以緩解氣候相關風險。ESG工作小組負責監督進度，並在必要時聘用專業顧問。報告期間，我們參與了香港環境及生態局的《節能約章》，彰顯我們對減排的承諾，並加速向低碳未來轉型。





# CARE FOR THE SOCIETY WITH PASSION FOR PUBLIC WELFARE

## 心繫社會 • 熱心公益

### COMMUNITY INVESTMENT

As a responsible and warm enterprise, the Group demonstrates its sense of responsibility to the times through concrete action, sharing value with society in the pursuit of high-quality development, advancing the cause of public welfare, and fulfilling its corporate social responsibility through practical deeds. The Group adheres to the philosophy of "Giving Back to the Community" and has been highly dedicated to public welfare over the years, with the commitment to creating value for the community and achieving improvement together with society. Our active participation in community programs aims to provide protection for public health and geriatric care, thereby enhancing people's well-being and promoting community care.

### 社區投資

作為負責任及有溫度的企業，本集團以切實行動詮釋本企業的時代擔當，在高質量發展中與社會共享價值，促進公益事業發展，以實際行動踐行企業社會責任。本集團秉持「取之社會、用之社會」的信念，多年來一直熱心公益，致力為社區創造價值，與社會實現共同進步。我們積極參與各項社區計劃，致力為公眾健康和養老提供保障，從而增進民生福祉及促進社區關懷。

Wuhu Fuling Golden Sun Geriatric Care Center "Seniors' Month" Community Care Initiative

蕪湖福齡金太陽長者照顧中心「敬老月」社區關懷行動

In September 2025, Wuhu Fuling Golden Sun Geriatric Care Center responded to the national Seniors' Month initiative by partnering with Hainan Du Community, Tangmei Community, and Kaixuan Community to carry out a series of elderly care activities. On 23 September, a care delegation comprising centre staff and volunteers conducted home visits to more than ten families of elderly residents facing financial hardship, delivering mooncakes and daily necessities alongside emotional support and health consultations. On 28 September, the centre co-organised a "Welcoming Mid-Autumn and Celebrating National Day" cultural evening with Tangmei Community, drawing enthusiastic participation from local residents and strengthening community cohesion. The initiative reflected the Group's commitment to the well-being of elderly individuals and deepened its collaborative ties with the surrounding communities.



2025年9月，蕪湖福齡金太陽長者照顧中心響應國家敬老月倡議，聯同海南度社區、棠梅社區及凱旋社區開展一系列敬老活動。9月23日，中心員工及義工組成慰問小組，上門探訪十餘戶經濟困難長者家庭，送贈月餅及日常生活用品，並提供情緒支援及健康諮詢。9月28日，中心與棠梅社區合辦「迎中秋慶國慶」文藝晚會，吸引周邊居民踴躍參與，增強社區凝聚力。是次活動展現了企業對長者福祉的承擔，並深化了與社區的合作關係。

Vissam Prosperity "Chung Yeung Festival – Source of Warmth for the Elderly" Virtue and Compassion Day Care Action

北京偉森「重陽敬老 情暖涑源」厚德慈愛日間照料行動

In October 2025, on the occasion of the Chung Yeung Festival, Vissam Prosperity visited Laiyuan County in Hebei Province to bring festive greetings and care to local elderly residents. The team gathered daily necessities, including rice, flour, and cooking oil, and made dedicated visits to Laiyuan Enkun Elderly Care Home and the Houde Ci'ai Fushou Road Day Care Service Station to present donations, conveying respect and warmth to elderly residents through heartfelt and tangible action.

2025年10月，適逢重陽佳節，北京偉森走進河北涑源縣，為當地長者送上節日祝福與關懷。團隊籌集大米、麵粉、食用油等生活物資，親赴涑源恩坤養老院及厚德慈愛福壽路日間照料服務站進行慰問捐贈，以實際行動傳遞敬老之心，溫暖長者心田。





### Sponsorship of the “Chill ESG Concert” Environmental Music Concert

#### 贊助「Chill ESG Concert」環保音樂會

The Group is committed to advancing sustainable development through concrete actions, actively supporting projects that align with our corporate values and create positive social impact. During the reporting period we supported Hong Kong’s first community-initiated carbon-neutral concert, “Chill & Decarbonize: ESG Charity Concert<sup>1</sup>”, organized by Riskory S, a brand of Riskory Consultancy Limited (“Riskory”). The event aimed to promote carbon neutrality for all, using music to reach a wider audience and unite the community to build a sustainable culture. At the same time, it supported local music development in Hong Kong to create a lasting, positive impact on society. Circular economy principles were integrated throughout the planning and execution of the event, including the use of natural bamboo pulp tissues, reusable stainless-steel cutlery, the provision of craft beer upcycled from surplus bread, and comprehensive food waste recycling. A portion of the event’s proceeds will be donated to Food Angel, reflecting Riskory S’s commitment to food waste management and resource circularity, thereby amplifying the social impact.

With respect to the greenhouse gas (GHG) emissions generated by the event, Riskory, a specialist in Carbon Neutral Event Management (CNEM), conducted a carbon audit, which was subsequently verified by an independent, globally recognized third-party testing and certification organization. To achieve carbon neutrality for the event, Riskory purchased and retired carbon credits via the Hong Kong Exchanges and Clearing Limited (HKEX) Core Climate platform to offset the remaining emissions<sup>2</sup>. By supporting this project, we aim to play a demonstrative and catalytic role, fostering collaboration across the value chain and encouraging suppliers, business partners, and other stakeholders to jointly participate in Scope 3 emissions management, thereby laying a solid foundation for our long-term carbon reduction goals and working together to create a more sustainable future.

本集團致力以實際行動推動可持續發展，並積極支持與集團理念一致、能為社會帶來正面影響的項目。於報告期內，我們支持由Riskory Consultancy Limited(「Riskory」)旗下品牌Riskory S舉辦的全港首個民間碳中和音樂會—《Chill住減碳》ESG慈善音樂會<sup>1</sup>。該活動旨在將碳中和理念推廣至每一個人，透過音樂作為媒介，將相關理念帶給更廣泛的群眾，凝聚更多社會力量，一同推動低碳及可持續發展文化，同時支持香港本地音樂發展，為社會帶來實質而持續的影響。活動在策劃及執行過程中貫徹循環經濟原則，包括採用天然竹漿紙巾、重用不鏽鋼餐具、提供由剩餘麵包升級再造的手工啤酒，以及全面回收廚餘等措施。活動的部分收益將撥捐予「惜食堂」，以呼應Riskory S對廚餘管理及資源循環利用的重視，同時擴大活動的社會效益。

就活動產生的溫室氣體排放而言，由碳中和活動管理(CNEM)服務專家Riskory負責執行碳審計，並由全球領先的第三方檢測及認證機構完成核證。為實現活動的碳中和目標，Riskory透過香港交易所Core Climate平台購買及使用碳信用<sup>2</sup>，以抵銷活動的剩餘排放。透過支持本項目，我們期望發揮示範與帶動的作用，推動價值鏈協作，並鼓勵供應商、業務夥伴及其他持份者共同投入範圍三排放管理，為長遠減碳目標打下基礎，共創可持續未來。



Sponsorship of the "Chill ESG Concert" Environmental Music Concert

贊助「Chill ESG Concert」環保音樂會



Staff from the food waste recycling service (1st and 2nd from left), renowned Hong Kong music industry visionary Mr Alex Chan (Center), and representative from the organizer Riskory S (Right), showing their strong support for food waste recycling  
回收廚餘服務的職員(左一、二)、香港知名樂壇伯樂陳少寶先生(中)以及主辦方Riskory代表(右)大力支持回收廚餘



A group photo of local Hong Kong singers  
一眾香港本地歌手合照



A group photo of representatives from various green suppliers and supporting organizations  
各綠色供應商及活動支持機構代表合照



The audience enjoyed the concert with great enthusiasm  
觀眾全情投入音樂會，氣氛熱烈

<sup>1</sup> The event was originally scheduled for 28 November 2025, but was postponed to 23 January 2026, due to unforeseen circumstances and scheduling adjustments. The name of the event "Chill & Decarbonize: ESG Charity Concert 2025" is translated from 《Chill 住減碳》ESG慈善音樂會 2025. In case of any discrepancy, the Chinese version shall prevail.  
活動原定於2025年11月28日舉行，因應不可預見情況及活動安排調整，延後至2026年1月23日舉行。

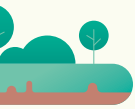
<sup>2</sup> The carbon credits used for this offset were procured and retired via the HKEX Core Climate platform, sourced from the "Panzhou County Chicken Farm Manure Composting Project (Project ID: 5210)". This project is issued under the Verified Carbon Standard ("VCS"), which is a globally widely adopted standard for GHG emission reduction credits.  
本次抵銷所使用之碳信用，乃經由香港交易所Core Climate平台採購及抵銷，源自「Panzhou County Chicken Farm Manure Composting Project 項目編號(5210)」。該項目依據Verified Carbon Standard(「VCS」)進行核發；VCS為目前全球廣泛採納的溫室氣體減排信用標準。



# APPENDIX A: HKEX ENVIRONMENTAL, SOCIAL AND GOVERNANCE REPORTING CODE CONTENT INDEX

## 附錄一：聯交所《環境、社會及管治報告守則》內容索引

Subject Areas, Aspects, General Disclosures and KPIs 主要範疇、層面、一般披露及關鍵績效指標		Disclosure or explanation in the relevant sections of this Report 本報告相關章節披露或解釋
<b>Mandatory Disclosure Requirements</b> 強制披露規定		
Governance Structure 管治架構	<p>A Statement from the board containing the following elements:</p> <ul style="list-style-type: none"> <li>(i) a disclosure of the board's oversight of ESG issues;</li> <li>(ii) the board's ESG management approach and strategy, including the process used to evaluate, prioritise and manage material ESG-related issues (including risks to the issuer's businesses); and</li> <li>(iii) how the board reviews progress made against ESG-related goals and targets, with an explanation of how they relate to the issuer's businesses.</li> </ul> <p>由董事會發出的聲明，當中載有下列內容：</p> <ul style="list-style-type: none"> <li>(i) 披露董事會對環境、社會及管治事宜的監管；</li> <li>(ii) 董事會的環境、社會及管治管理方針及策略，包括評估、優次排列及管理重要的環境、社會及管治相關事宜(包括對發行人業務的風險)的過程；及</li> <li>(iii) 董事會如何按環境、社會及管治相關目標檢討進度、並解釋它們如何與發行人業務有關連。</li> </ul>	Sustainable Development Governance 可持續發展管治
Reporting Principles 匯報原則	<p>A description of, or an explanation of, the application of the following Reporting Principles in the preparation of the ESG report:</p> <p><b>Materiality:</b> The ESG report should disclose: (i) the process to identify and the criteria for the selection of material ESG factors; (ii) if a stakeholder engagement is conducted, a description of significant stakeholders identified, and the process and results of the issuer's stakeholder engagement.</p> <p><b>Quantitative:</b> Information on the standards, methodologies, assumptions and/or calculation tools used, and the source of conversion factors used, for the reporting of emissions/energy consumption (where applicable) should be disclosed.</p> <p><b>Consistency:</b> The issuer should disclose in the ESG report any changes to the methods or KPIs used, or any other relevant factors affecting a meaningful comparison.</p> <p>描述或解釋在編備環境、社會及管治報告時如何應用匯報原則：</p> <p><b>重要性：</b> 環境、社會及管治報告應披露：(i) 識別重要環境、社會及管治因素的過程及選擇這些因素的準則；(ii) 如發行人已進行持份者參與，已識別的重要持份者的描述及發行人持份者參與的過程及結果。</p> <p><b>量化：</b> 有關匯報排放量／能源耗用(如適用)所用的標準、方法、假設及／或計算工具的資料，以及所使用的轉換因素的來源應予披露。</p> <p><b>一致性：</b> 發行人應在環境、社會及管治報告中披露統計方法或關鍵績效指標的變更(如有)或任何其他影響有意義比較的相關因素。</p>	About This Report – Reporting Principles 關於本報告－匯報原則



附錄一：聯交所《環境、社會及管治報告守則》內容索引

Subject Areas, Aspects, General Disclosures and KPIs 主要範疇、層面、一般披露及關鍵績效指標		Disclosure or explanation in the relevant sections of this Report 本報告相關章節披露或解釋
Reporting Boundary 匯報範圍	A narrative explaining the reporting boundaries of the ESG report and describing the process used to identify which entities or operations are included in the ESG report. 解釋環境、社會及管治報告的匯報範圍，及描述挑選哪些實體或業務納入環境、社會及管治報告的過程。若匯報範圍有所改變，發行人應解釋不同之處及變動原因。	About This Report – Reporting Period and Scope 關於本報告－報告期間及範圍
<b>“Comply or Explain” Provisions</b> 「不遵守就解釋」條文		
<b>A. Environment</b> A.環境		
<b>Aspect A1: Emissions</b> 層面A1：排放物		
General Disclosure 一般披露	Information on: (a) the policies; and (b) compliance with relevant laws and regulations that have a significant impact on the issuer relating to air emissions, discharges into water and land, and the generation of hazardous and non-hazardous waste. 有關廢氣排放、向水及土地的排污、有害及無害廢棄物的產生等的： (a) 政策；及 (b) 遵守對發行人有重大影響的相關法律及規例的資料。	Commitment to Environmental Protection on Energy Conservation and Emission Reduction 環保承諾 • 節能減排
KPI A1.1 關鍵績效指標A1.1	The types of emissions and respective emissions data. 排放物種類及相關排放數據。	Emissions – Air and Greenhouse Gases Emissions 排放物－廢氣及溫室氣體排放
KPI A1.3 關鍵績效指標A1.3	Total hazardous waste produced (in tonnes) and, where appropriate, intensity (e.g. per unit of production volume, per facility). 所產生有害廢棄物總量(以噸計算)及(如適用)密度(如以每產量單位、每項設施計算)。	Emissions – Disposal of Hazardous and Non-Hazardous Waste 排放物－有害及無害廢棄物處理



Subject Areas, Aspects, General Disclosures and KPIs 主要範疇、層面、一般披露及關鍵績效指標		Disclosure or explanation in the relevant sections of this Report 本報告相關章節披露或解釋
KPI A1.4 關鍵績效指標A1.4	Total non-hazardous waste produced (in tonnes) and, where appropriate, intensity (e.g. per unit of production volume, per facility). 所產生無害廢棄物總量(以噸計算)及(如適用)密度(如以每產量單位、每項設施計算)。	Emissions – Disposal of Hazardous and Non-Hazardous Waste 排放物－有害及無害廢棄物處理
KPI A1.5 關鍵績效指標A1.5	Description of emission target(s) set and steps taken to achieve them. 描述所訂立的排放量目標及為達到這些目標所採取的步驟。	Emissions – Air and Greenhouse Gases Emissions 排放物－廢氣及溫室氣體排放
KPI A1.6 關鍵績效指標A1.6	Description of how hazardous and non-hazardous wastes are handled, and a description of the reduction target(s) set and steps taken to achieve them. 描述處理有害及無害廢棄物的方法，及描述所訂立的減廢目標及為達到這些目標所採取的步驟。	Emissions – Disposal of Hazardous and Non-Hazardous Waste 排放物－有害及無害廢棄物處理
<b>Aspect A2: Use of Resources</b> 層面A2：資源使用		
General Disclosure 一般披露	Policies on the efficient use of resources, including energy, water and other raw materials. 有效使用資源(包括能源、水及其他原材料)的政策。	Commitment to Environmental Protection on Energy Conservation and Emission Reduction – Use of Resources 環保承諾 • 節能減排－資源使用
KPI A2.1 關鍵績效指標A2.1	Direct and/or indirect energy consumption by type (e.g. electricity, gas or oil) in total (kWh in '000s) and intensity (e.g. per unit of production volume, per facility). 按類型劃分的直接及／或間接能源(如電、氣或油)總耗量(以千個千瓦時計算)及密度(如以每產量單位、每項設施計算)。	Use of Resources – Energy 資源使用－能源
KPI A2.2 關鍵績效指標A2.2	Water consumption in total and intensity (e.g. per unit of production volume, per facility). 總耗水量及密度(如以每產量單位、每項設施計算)。	Use of Resources – Water 資源使用－用水
KPI A2.3 關鍵績效指標A2.3	Description of energy use efficiency target(s) set and steps taken to achieve them. 描述所訂立的能源使用效益目標及為達到這些目標所採取的步驟。	Use of Resources – Energy 資源使用－能源



附錄一：聯交所《環境、社會及管治報告守則》內容索引

Subject Areas, Aspects, General Disclosures and KPIs 主要範疇、層面、一般披露及關鍵績效指標		Disclosure or explanation in the relevant sections of this Report 本報告相關章節披露或解釋
KPI A2.4 關鍵績效指標A2.4	Description of whether there is any issue in sourcing water that is fit for purpose, water efficiency target(s) set and steps taken to achieve them. 描述求取適用水源上可有任何問題，以及所訂立的用水效益目標及為達到這些目標所採取的步驟。	Use of Resources – Water 資源使用－用水
KPI A2.5 關鍵績效指標A2.5	Total packaging material used for finished products (in tonnes) and, if applicable, with reference to per unit produced. 製成品所用包裝材料的總量(以噸計算)及(如適用)每生產單位佔量。	Due to the nature of its business, the Group does not consume packaging materials and therefore the relevant disclosures are not applicable 基於其業務性質，本集團並無消耗包裝材料，因此相關披露並不適用
<b>Aspect A3: The Environment and Natural Resources</b> <b>層面A3：環境及天然資源</b>		
General Disclosure 一般披露	Policies on minimising the issuer's significant impacts on the environment and natural resources. 減低發行人對環境及天然資源造成重大影響的政策。	Commitment to Environmental Protection on Energy Conservation and Emission Reduction – Environment and Natural Resources 環保承諾 • 節能減排－環境及天然資源
A3.1	Description of the significant impacts of activities on the environment and natural resources and the actions taken to manage them. 描述業務活動對環境及天然資源的重大影響及已採取管理有關影響的行動。	Commitment to Environmental Protection on Energy Conservation and Emission Reduction – Environment and Natural Resources 環保承諾 • 節能減排－環境及天然資源



Subject Areas, Aspects, General Disclosures and KPIs 主要範疇、層面、一般披露及關鍵績效指標		Disclosure or explanation in the relevant sections of this Report 本報告相關章節披露或解釋
<b>B. Society</b> <b>B. 社會</b>		
<b>Aspect B1: Employment</b> <b>層面B1：僱傭</b>		
General Disclosure 一般披露	Information on: (a) the policies; and (b) compliance with relevant laws and regulations that have a significant impact on the issuer relating to compensation and dismissal, recruitment and promotion, working hours, rest periods, equal opportunity, diversity, anti-discrimination, and other benefits and welfare. 有關薪酬及解僱、招聘及晉升、工作時數、假期、平等機會、多元化、反歧視以及其他待遇及福利的： (a) 政策；及 (b) 遵守對發行人有重大影響的相關法律及規例的資料。	People-oriented on Employee Growth and Development – Employment 以人為本 • 員工成長與發展 – 僱傭
KPI B1.1 關鍵績效指標B1.1	Total workforce by gender, employment type (for example, full- or part-time), age group and geographical region. 按性別、僱傭類型(如全職或兼職)、年齡組別及地區劃分的僱員總數。	Employment – Staff Overview 僱傭 – 員工概覽
KPI B1.2 關鍵績效指標B1.2	Employee turnover rate by gender, age group and geographical region. 按性別、年齡組別及地區劃分的僱員流失比率。	Employment – Staff Overview 僱傭 – 員工概覽

Subject Areas, Aspects, General Disclosures and KPIs 主要範疇、層面、一般披露及關鍵績效指標		Disclosure or explanation in the relevant sections of this Report 本報告相關章節披露或解釋
<b>Aspect B2: Health and Safety</b> 層面B2：健康與安全		
General Disclosure 一般披露	Information on: (a) the policies; and (b) compliance with relevant laws and regulations that have a significant impact on the issuer relating to providing a safe working environment and protecting employees from occupational hazards. 有關提供安全工作環境及保障僱員避免職業性危害的： (a) 政策；及 (b) 遵守對發行人有重大影響的相關法律及規例的資料。	People-oriented on Employee Growth and Development – Health and Safety 以人為本 • 員工成長與發展 – 健康與安全
KPI B2.1 關鍵績效指標B2.1	The number and rate of work-related fatalities that occurred in each of the past three years, including the reporting year. 過去三年(包括匯報年度)每年因工亡故的人數及比率。	
KPI B2.2 關鍵績效指標B2.2	Lost days due to work injury. 因工傷損失工作日數。	
KPI B2.3 關鍵績效指標B2.3	Description of occupational health and safety measures adopted, and how they are implemented and monitored. 描述所採納的職業健康與安全措施，以及相關執行的監察方法。	
<b>Aspect B3: Development and Training</b> 層面B3：發展及培訓		
General disclosure 一般披露	Policies on improving employees' knowledge and skills for discharging duties at work. Description of training activities. 有關提升僱員履行工作職責的知識及技能的政策。描述培訓活動。	People-oriented on Employee Growth and Development – Training and Development 以人為本 • 員工成長與發展 – 培訓及發展
KPI B3.1 關鍵績效指標B3.1	The percentage of employees trained by gender and employee category (e.g. senior management, middle management). 按性別及僱員類別(如高級管理層、中級管理層)劃分的受訓僱員百分比。	
KPI B3.2 關鍵績效指標B3.2	The average training hours completed per employee by gender and employee category. 按性別及僱員類別劃分，每名僱員完成受訓的平均時數。	



Subject Areas, Aspects, General Disclosures and KPIs 主要範疇、層面、一般披露及關鍵績效指標		Disclosure or explanation in the relevant sections of this Report 本報告相關章節披露或解釋
<b>Aspect B4: Labor Standards</b> 層面B4：勞工準則		
General Disclosure 一般披露	Information on: (a) the policies; and (b) compliance with relevant laws and regulations that have a significant impact on the issuer relating to preventing child and forced labor. 有關防止童工或強制勞工的： (a) 政策；及 (b) 遵守對發行人有重大影響的相關法律及規例的資料。	People-oriented on Employee Growth and Development – Labor Standards 以人為本 • 員工成長與發展 – 勞工準則
KPI B4.1 關鍵績效指標B4.1	Description of measures to review employment practices to avoid child and forced labor. 描述檢討招聘慣例的措施以避免童工及強制勞工。	
KPI B4.2 關鍵績效指標B4.2	Description of steps taken to eliminate such practices when discovered. 描述在發現違規情況時消除有關情況所採取的步驟。	



附錄一：聯交所《環境、社會及管治報告守則》內容索引

Subject Areas, Aspects, General Disclosures and KPIs 主要範疇、層面、一般披露及關鍵績效指標		Disclosure or explanation in the relevant sections of this Report 本報告相關章節披露或解釋
<b>Aspect B5: Supply Chain Management</b> 層面B5：供應鏈管理		
General Disclosure 一般披露	Policies on managing environmental and social risks of the supply chain. 管理供應鏈的環境及社會風險政策。	Mutual Benefit and Win-win on Green Procurement – Supply Chain Management 互利共贏 • 綠色採購 – 供應鏈管理
KPI B5.1 關鍵績效指標B5.1	Number of suppliers by geographical region. 按地區劃分的供應商數目。	
KPI B5.2 關鍵績效指標B5.2	Description of practices relating to engaging suppliers, number of suppliers where the practices are being implemented, and how they are implemented and monitored. 描述有關聘用供應商的慣例，向其執行有關慣例的供應商數目，以及相關執行及監察方法。	
KPI B5.3 關鍵績效指標B5.3	Description of practices used to identify environmental and social risks along the supply chain, and how they are implemented and monitored. 描述有關識別供應鏈每個環節的環境及社會風險的慣例，以及相關執行及監察方法。	
KPI B5.4 關鍵績效指標B5.4	Description of practices used to promote environmentally preferable products and services when selecting suppliers, and how they are implemented and monitored. 描述在揀選供應商時促使多用環保產品及服務的慣例，以及相關執行及監察方法。	



Subject Areas, Aspects, General Disclosures and KPIs 主要範疇、層面、一般披露及關鍵績效指標		Disclosure or explanation in the relevant sections of this Report 本報告相關章節披露或解釋
<b>Aspect B6: Product Responsibility</b> <b>層面B6：產品責任</b>		
General Disclosure 一般披露	Information on: (a) the policies; and (b) compliance with relevant laws and regulations that have a significant impact on the issuer relating to health and safety, advertising, labelling and privacy matters relating to products and services provided and methods of redress. 有關所提供產品和服務的健康與安全、廣告、標籤及私隱事宜以及補救方法的： (a) 政策；及 (b) 遵守對發行人有重大影響的相關法律及規例的資料。	Dedicated to Product Quality and Safety – Product Responsibility, Advertisement and Labelling 專心致志 • 產品質量與安全 – 產品責任、廣告及標籤
KPI B6.1 關鍵績效指標B6.1	Percentage of total products sold or shipped subject to recalls for safety and health reasons. 已售或已運送產品總數中因安全與健康理由而須回收的百分比。	Dedicated to Product Quality and Safety – Product Quality – Vissam Prosperity 專心致志 • 產品質量與安全 – 產品質量 – 北京偉森
KPI B6.2 關鍵績效指標B6.2	Number of products and service-related complaints received and how they are dealt with. 接獲關於產品及服務的投訴數目以及應對方法。	Dedicated to Product Quality and Safety – Service Quality – Geriatric Care Services 專心致志 • 產品質量與安全 – 服務質量 – 養老服務
KPI B6.3 關鍵績效指標B6.3	Description of practices relating to observing and protecting intellectual property rights. 描述與維護及保障知識產權有關的慣例。	Dedicated to Product Quality and Safety – Intellectual Property 專心致志 • 產品質量與安全 – 知識產權
KPI B6.4 關鍵績效指標B6.4	Description of quality assurance process and recall procedures. 描述質量檢定過程及產品回收程序。	Dedicated to Product Quality and Safety – Product Quality – Vissam Prosperity 專心致志 • 產品質量與安全 – 產品質量 – 北京偉森
KPI B6.5 關鍵績效指標B6.5	Description of consumer data protection and privacy policies, and how they are implemented and monitored. 描述消費者資料保障及私隱政策，以及相關執行及監察方法。	Dedicated to Product Quality and Safety – Customer Privacy and Cybersecurity 專心致志 • 產品質量與安全 – 客戶私隱及網路安全

Subject Areas, Aspects, General Disclosures and KPIs 主要範疇、層面、一般披露及關鍵績效指標		Disclosure or explanation in the relevant sections of this Report 本報告相關章節披露或解釋
<b>Aspect B7: Anti-corruption</b> <b>層面B7：反貪污</b>		
General Disclosure 一般披露	Information on: (a) the policies; and (b) compliance with relevant laws and regulations that have a significant impact on the issuer relating to bribery, extortion, fraud and money laundering. 有關防止賄賂、勒索、欺詐及洗黑錢的： (a) 政策；及 (b) 遵守對發行人有重大影響的相關法律及規例的資料。	Upholding Probity and Integrity on Operation – Anti-corruption 恪守誠信 • 廉潔經營 – 反貪污
KPI B7.1 關鍵績效指標B7.1	Number of concluded legal cases regarding corrupt practices brought against the issuer or its employees during the reporting period and the outcomes of the cases. 於報告期內對發行人或其僱員提出並已審結的貪污訴訟案件的數目及訴訟結果。	Upholding Probity and Integrity on Operation – Anti-corruption 恪守誠信 • 廉潔經營 – 反貪污
KPI B7.2 關鍵績效指標B7.2	Description of preventive measures and whistle-blowing procedures, and how they are implemented and monitored. 描述防範措施及舉報程序，以及相關執行及監察方法。	Upholding Probity and Integrity on Operation – Whistleblowing Policy 恪守誠信 • 廉潔經營 – 舉報政策
KPI B7.3 關鍵績效指標B7.3	Description of anti-corruption training provided to directors and staff. 描述向董事及員工提供的反貪污培訓。	Upholding Probity and Integrity on Operation – Anti-corruption Training 恪守誠信 • 廉潔經營 – 反貪污培訓
<b>Aspect B8: Social Investment</b> <b>B8層面：社區投資</b>		
General Disclosure 一般披露	Policies on community engagement to understand the needs of the communities where the issuer operates and to ensure its activities take into consideration the communities' interests. 有關以社區參與來了解營運所在社區需要和確保其業務活動會考慮社區利益的政策。	Care for the Society with Passion on Public Welfare – Community Investment 心繫社會 • 熱心公益 – 社區投資
KPI B8.1 關鍵績效指標B8.1	Focus areas of contribution (e.g. education, environmental concerns, labor needs, health, culture, sport). 專注貢獻範疇(如教育、環境事宜、勞工需求、健康、文化、體育)。	
KPI B8.2 關鍵績效指標B8.2	Resources contributed (e.g. money or time) to the focus area. 在專注範疇所動用資源(如金錢或時間)。	



# APPENDIX B: CLIMATE-RELATED DISCLOSURES INDEX

## 附錄二：氣候相關披露索引

ESG Code ESG守則	Section 章節	Remarks and/or Interpretation 備註及／或直接解釋
<b>Governance</b> 管治		
19(a)(i)–(iii)	Climate change – Governance 氣候變化—管治	Disclosed. 已披露。
19(a)(iv)	Not applicable 不適用	The Group has not incorporated climate-related considerations into our remuneration policies. 本集團尚未將氣候相關因素納入到薪酬政策當中。
19(b)(i)–(ii)	Climate Change – Governance 氣候變化—管治	Disclosed. 已披露。
<b>Strategy</b> 策略		
20(a)–(d)	Climate Change – Strategy – Climate-related risk and opportunities 氣候變化—策略—氣候相關風險和機遇	Disclosed. 已披露。
21(a)–(b)	Climate Change – Strategy – Climate-related risk and opportunities 氣候變化—策略—氣候相關風險和機遇	Disclosed. 已披露。
22(a)(i)	Climate Change – Strategy – Climate-related risk and opportunities 氣候變化—策略—氣候相關風險和機遇	Disclosed. 已披露。
22(a)(ii)	Climate Change – Strategy – Climate-related risk and opportunities 氣候變化—策略—氣候相關風險和機遇	Disclosed. 已披露。
22(a)(iii)	Not Applicable 不適用	The Group has not established a climate-related transition plan. 本集團尚未設立氣候相關轉型計劃。
22(a)(iv)	Climate Change – Strategy – Climate-related risk and opportunities 氣候變化—策略—氣候相關風險和機遇	Disclosed. 已披露。
22(b)	Not Applicable 不適用	The Group has not established detailed plans or allocated resources for adaptation, mitigation, transition initiatives, or climate targets. 本集團尚未就適應、緩解、轉型措施或氣候目標制定具體計劃或分配資源。



## APPENDIX B: CLIMATE-RELATED DISCLOSURES INDEX •

### 附錄二：氣候相關披露索引

ESG Code ESG守則	Section 章節	Remarks and/or Interpretation 備註及／或直接解釋
23	Not Applicable 不適用	The Group has not disclosed plans for responding to climate-related risks and opportunities in previous reporting periods. 本集團尚未在先前的報告期中披露應對氣候相關風險和機遇的計劃。
24(a)–(b)	Not Applicable 不適用	The Group is currently refining the quantitative data for climate-related risks and opportunities. 本集團目前正在完善氣候相關風險及機遇的量化數據。
25(a)–(b)	Not Applicable 不適用	The Group is currently refining the quantitative data for climate-related risks and opportunities. 本集團目前正在完善氣候相關風險及機遇的量化數據。
26(a)(i)	Climate Change – Strategy – Climate resilience 氣候變化－策略－氣候韌性	Disclosed. 已披露。
26(a)(ii)	Not Applicable 不適用	Relevant information will be disclosed in the future once its accuracy can be fully verified. 相關資料將於未來其準確性得到充分核實後予以披露。
26(a)(iii)	Climate Change – Strategy – Climate resilience 氣候變化－策略－氣候韌性	Disclosed. 已披露。
26(b)(i)–(iii)	Climate Change – Strategy – Climate resilience 氣候變化－策略－氣候韌性	Disclosed. 已披露。



## APPENDIX B: CLIMATE-RELATED DISCLOSURES INDEX •

### 附錄二：氣候相關披露索引

ESG Code ESG守則	Section 章節	Remarks and/or Interpretation 備註及／或直接解釋
<b>Risk Management</b> 風險管理		
27(a)	Climate Change – Risk Management 氣候變化－風險管理	Disclosed. 已披露。
27(b)	Not Applicable 不適用	The Group was currently refining the process and policies regarding climate-related opportunities. 本集團目前正在完善有關氣候相關機遇的流程及政策。
27(c)	Climate Change – Risk Management 氣候變化－風險管理	Disclosed. 已披露。
<b>Metrics and Targets</b> 指標及目標		
28(a)–(c)	Climate Change – Metrics and Targets – Greenhouse gas emission 氣候變化－指標與目標－溫室氣體排放	Disclosed. 已披露。
29(a)–(d)	Climate Change – Metrics and Targets – Greenhouse gas emission 氣候變化－指標與目標－溫室氣體排放	Disclosed. 已披露。
30	Not Applicable 不適用	The Group is currently refining the data for the quantification of assets and business activities exposed to climate-related risks and opportunities. 本集團目前正在完善有關面臨氣候相關風險及機遇之資產與業務活動的量化數據。
31	Not Applicable 不適用	The Group is currently refining the data for the quantification of assets and business activities exposed to climate-related risks and opportunities. 本集團目前正在完善有關面臨氣候相關風險及機遇之資產與業務活動的量化數據。
32	Not Applicable 不適用	The Group is currently refining the data for the quantification of assets and business activities exposed to climate-related risks and opportunities. 本集團目前正在完善有關面臨氣候相關風險及機遇之資產與業務活動的量化數據。



## APPENDIX B: CLIMATE-RELATED DISCLOSURES INDEX •

### 附錄二：氣候相關披露索引

ESG Code ESG守則	Section 章節	Remarks and/or Interpretation 備註及／或直接解釋
33	Not Applicable 不適用	The Group is currently refining the data for the quantification of assets and business activities exposed to climate-related risks and opportunities. 本集團目前正在完善有關面臨氣候相關風險及機遇之資產與業務活動的量化數據。
34(a)–(b)	Not Applicable 不適用	The Group currently does not apply carbon pricing in our decision-making process. 本集團目前並未在決策過程中應用碳定價。
35	Not Applicable 不適用	The Group currently does not incorporate climate-related considerations into our remuneration policies. 本集團目前尚未將氣候相關考量納入我們的薪酬政策中。
36	Not Applicable 不適用	The Group will consider increasing its disclosure content in accordance with these voluntary disclosure requirements in the future. 本集團未來將考慮根據該等自願披露要求增加披露內容。
37(a)–(h)	Not Applicable 不適用	Not applicable concerning about the nature of the climate-related targets. 鑑於氣候相關目標的性質，此項不適用。
38(a)–(d)	Not Applicable 不適用	Not applicable concerning about the nature of the climate-related targets. 鑑於氣候相關目標的性質，此項不適用。
39	Not Applicable 不適用	As the current reporting period marks our first year of setting the target, the relevant disclosure requirements are not applicable. 由於報告期間為我們首年訂立量化目標，因此相關披露要求並不適用。
40(a)–(e)	Not Applicable 不適用	Not applicable concerning about the nature of the climate-related targets. 鑑於氣候相關目標的性質，此項不適用。