



CCBI SECURITIES | RESEARCH

## China Economics Update: Ongoing soft recovery, increased policy support 中国经济评论: 温和复苏持续, 政策支持加码

**Mixed Oct economic data reflects an uneven recovery.** Resilient industrial production (IP) growth was underpinned by China's rising electric car industry and related industries. Stronger-than-expected headline retail sales were driven by low base effects as underlying spending growth remained soft. Nevertheless, car sales were a bright spot. Real estate investment continued to drag down overall investment growth.

**Increased fiscal and monetary support will help sustain the recovery.** Fiscal policy has turned more supportive and is expected to aid growth and ease debt pressure on cash-strapped local governments. The PBoC injected long-term liquidity equivalent to a 25bp RRR cut today in a bid to maintain sufficient interbank liquidity. We expect monetary policy to stay accommodative to facilitate a continued recovery.

**十月数据喜忧掺半, 反映了经济的非均衡复苏。**新能源汽车及相关产业支撑工业产出增长。社会零售同比增长超预期, 主要受低基数效应影响。环比消费增速仍显疲软, 但汽车销售依然保持坚挺。固定投资则继续受房地产投资低迷拖累。

**更积极的财政和货币政策有助于推动经济复苏。**预计更为积极的财政政策将提振增长势头, 并纾解地方政府的债务压力。央行今天注入了相当于降准 25 个基点的长期流动性, 以保持银行间流动性充裕。我们预计货币政策保持宽松, 以促进经济的进一步复苏。

**Kevin Xie**

(852) 3911 8241

kevinxie@ccbintl.com

**Li Cui**

(852) 3911 8274

cuili@ccbintl.com

**Huiting Yan**

(852) 3911 8012

yanhuiting@ccbintl.com

## Better-than-expected IP and retail sales

**IP growth beat expectations in Oct** (4.6%YoY actual versus 4.5%YoY forecast). China's National Bureau of Statistics (NBS) estimates seasonal adjusted sequential IP growth was steady at 0.4% MoM, while remaining below the monthly average of 0.6% MoM during the pre-pandemic period. Resilient IP growth should help ease concerns about a sharp slowdown after manufacturing production sub-PMI for Oct fell sharply.

Growth in manufacturing output outstripped overall IP growth as electricity output slowed and growth in mining output remained soft. The rising electric car industry continues to underpin IP growth and growth in related industries such as electric machinery & equipment, and nonferrous metals (Fig 1). Output growth in computers and communication equipment picked up to 4.8% YoY, reflecting recovering global demand for consumer electronics. However, the contraction in pharmaceuticals output worsened.

**Year-on-year retail sales growth jumped** from 5.5% YoY to 7.6% in Oct (7.0% YoY expected) driven by the low comparison base in 2022. Seasonally adjusted sequential growth was almost unchanged at 0.07% MoM, suggesting muted growth momentum in consumption.

By category, growth in catering spending, consumer goods and car sales all rebounded in Oct (Fig 2). By contrast, online sales growth slowed from 6.6% YoY to 3.7% YoY in Oct after strong growth in online shopping during the lockdown last year. To smooth out base effects, we used a two-year comparison of the data for Oct 2023 and that from Oct 2021. Growth in consumer goods and catering spending slowed 0.6ppt and 4.3ppt to 7.1% and 7.6%, respectively, in Oct in the past two years. Car sales maintained strong momentum with steady two-year growth of around 24% in Oct. The two-year contraction in housing-related spending narrowed 4.7ppt to 7.7%.

**Fixed-asset investment (FAI) growth slowed** to 1.3% YoY in Oct by our estimate (Fig 3). Slightly slower manufacturing investment and still-weak real estate investment dragged down overall investment growth. By category:

- **Broad infrastructure investment growth rebounded slightly to 8.2% YoY in Oct.** Growth in traditional infrastructure investment, such as railways, highways, and industrial parks, decelerated to 3.7%YoY, the slowest pace since Apr 2022. However, thanks to the Chinese government's decarbonisation initiative, investment in the power sector was very strong at 25% YoY in Oct, pushing up broad infrastructure investment growth.
- **Manufacturing investment growth eased** by 1.7ppt to 6.2% YoY in Oct. Industrial upgrades remain the driver of manufacturing investment. Year-to-date high-tech manufacturing investment growth remained robust at 11.3% YoY. In particular, growth in electrical machinery & equipment and car manufacturing of 38.6%YoY and 18.7%YoY, respectively, led manufacturing investment growth in Oct. By contrast, investment in traditional low-end manufacturing, such as textiles, continued to contract as supply chains shifted to other nations in recent years.
- **The contraction in real estate investment was almost unchanged at 11.3% YoY in Oct.** Funding remains challenging, with a year-on-year contraction in funding for the current year down 17% YoY in Oct. Diminishing self-raised funds are the main drag on property funding.

**Volume-based property indicators deteriorated in Oct.** The year-on-year contraction in property starts widened to 21% YoY in Oct, putting the breaks on three months of narrowing. The contraction in property sales also widened slightly to 20% YoY in Oct after regulatory relaxation of the property market led to better sales in Sep. Growth in housing completions was down from 24.0% to 13.4% in Oct. Nevertheless, housing completions continue to grow as policymakers have placed high priority on completions.

**Consumer inflation dipped below zero on falling pork prices while PPI deflation deepened amid lower global oil prices in Oct.** Headline consumer inflation eased more-than-expected in Oct (down 0.2% YoY actual versus a 0.1% YoY decline expected; 0.0% previously). Pork prices were down 2% in the month. The annual falling pace widened to 30.1%, cutting 0.55ppt off headline CPI. Core inflation, excluding food and energy, dipped to just 0.6% YoY in Oct, reflecting overall soft domestic demand. Looking forward, we expect inflation will gradually rise on policy support and easing pork inflation amid diminishing pork supply (Fig 5). Overall inflation pressure remains benign amid the current soft recovery. We expect easing PPI deflation ahead because energy prices are likely to remain supported by a tight supply outlook and a resilient global economy.

**Oct Total Social Financing (TSF) data slightly missed market expectations** (RMB1.85t actual versus RMB1.95t expected). However, credit growth accelerated to 9.6%YoY in Oct, the fastest pace since May 2023. Accelerating government bond issuance has been the key contributor to overall TSF expansion. Outstanding government bonds increased RMB1.56tn in Oct, accounting for 84% of new additions to the TSF. The renminbi loan breakdown suggests mortgage demand increased RMB71b in Oct, better than the RMB33b increase in Oct 2022. However, overall mortgage demand remains soft compared with double-digit growth prior to Apr 2022. Corporate loans have also been soft (Fig 6).

**Our view:**

**The Oct data points to a continued soft recovery.** Emerging growth drivers have sustained resilient IP growth in manufacturing investment. Meanwhile, we have seen signs that the global downturn in manufacturing and consumer electronics has turned a corner, which will support demand for Chinese goods. A pickup in retail sales YoY growth in part reflected the low base while sequential growth remained soft. We maintain our 2023F growth forecast of 5.3%.

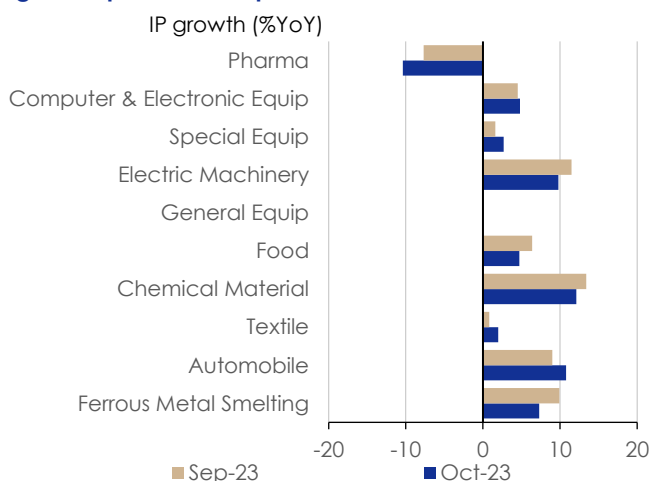
China's property sector continues to weigh on economic growth, though various indicators have stabilized at low levels, including high frequency property sales (Fig 4). Bloomberg reported that policymakers are mulling an offer in the neighborhood of RMB1t in new funding (0.8% of Chinese GDP or 7.5% of 2021 real estate investment) to support urban village renovation and affordable housing programs. If confirmed, new funding initiatives will give a modest boost to the domestic property sector.

**The recent ramp-up in fiscal support will boost growth in coming quarters, notwithstanding caution among private businesses and households.** The Ministry of Finance announced RMB1t of special central government bonds (0.8% of GDP), increasing the budget deficit from 3.0% to 3.8% on 24 Oct. The fund will be distributed to local governments in two equal batches of RMB500b in 4Q23 and 2024. The purpose is to support post-flood infrastructure investment in central China. [We expect](#) larger fiscal spending to add 0.4ppt to Chinese GDP, offsetting the negative fiscal drag experienced earlier in the year.

Also in Oct, special refinancing bond issuance picked up, resulting in a cumulative total of over RMB1t. Funds raised will be put towards lowering local debt risk and easing local government fiscal constraints, especially for local governments facing mounting refinancing pressure and diminishing revenue streams.

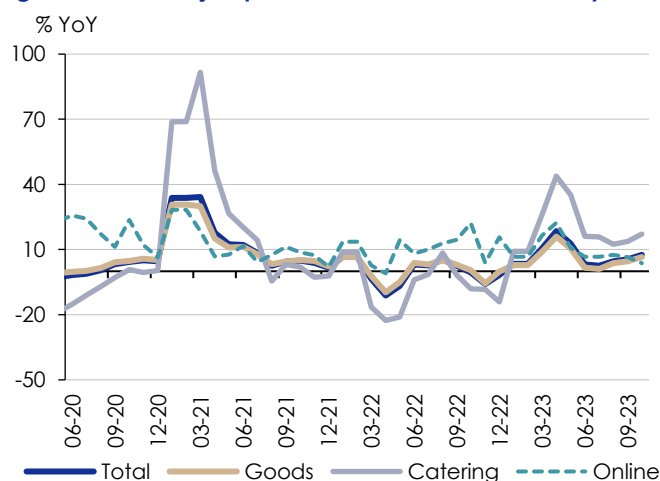
**Monetary stance is likely to stay accommodative.** On 15 Nov 2023, the PBoC injected a total of RMB600b via the 1-year medium-term lending facility (MLF), the largest amount in a single month since Dec 2016. The injection was comparable to the amount of liquidity released by a 25bp cut to the RRR. It should ease current tight interbank liquidity conditions amid tax payments and ample government bond issuance. We maintain our call of an additional 10bp cut to policy interest rates. Furthermore, additional RRR cuts cannot be ruled out.

**Fig 1: Output from car production accelerates**



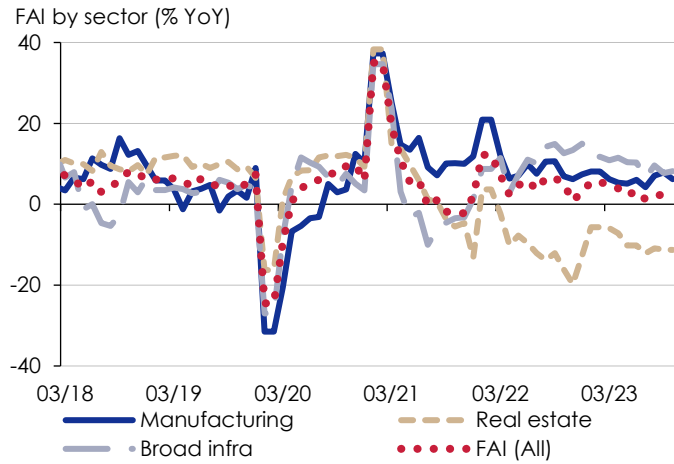
Source: NBS, CCBIS

**Fig 2: Retail sales jumped in Oct on a low base last year**



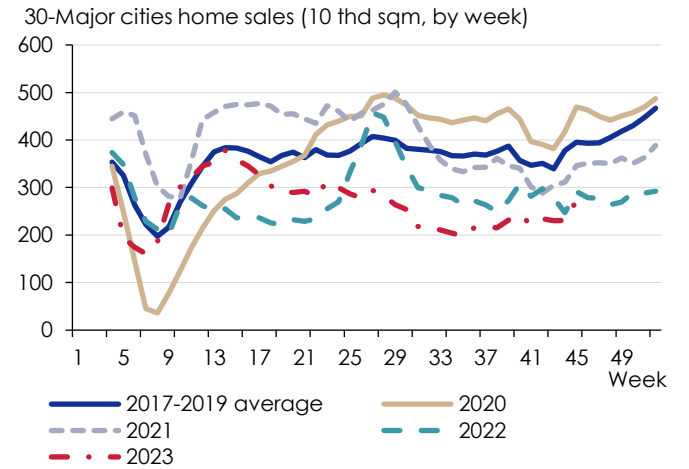
Source: NBS, CEIC, CCBIS

**Fig 3: Broad infrastructure investment rebounded slightly, while property investment remains depressed**



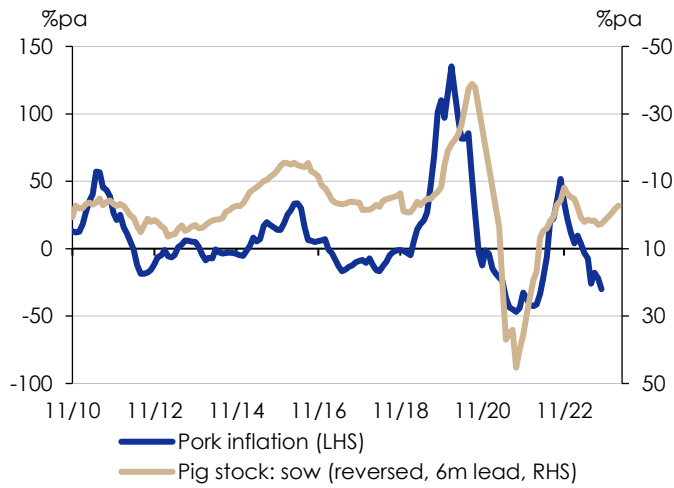
Source: NBS, CCBIS

**Fig 4: Property sales stabilized in recent weeks**



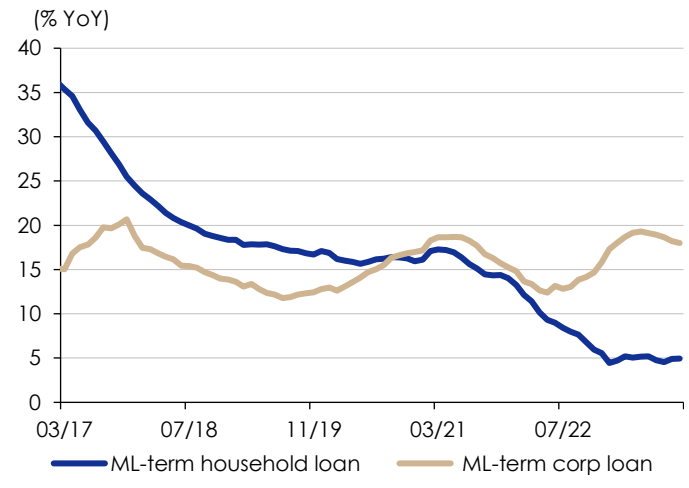
Source: NBS, Wind, CCBIS

**Fig 5: Expect easing pork deflation**



Source: NBS, CCBIS

**Fig 6: Businesses remain cautious as mortgage loan demand growth sits at a recent bottom**



Source: CEIC, Wind, CCBIS



**Analyst certification:**

The author(s) of this document, hereby declare that: (i) all of the views expressed in this document accurately reflect his/her personal views about any and all of the subject securities or issuers and were prepared in an independent manner; (ii) no part of any of his/her compensation was, is, or will be directly or indirectly related to the specific recommendations or views expressed in this document; and (iii) he/she receives no insider information/non-public price-sensitive information in relation to the subject securities or issuers which may influence the recommendations made by him. The author(s) of this document further confirm that (i) neither he/she nor his/her respective associate(s) (as defined in the Code of Conduct for Persons Licensed by or Registered with the Securities and Futures Commission issued by the Hong Kong Securities and Futures Commission) has dealt in/traded or will deal in/trade the securities covered in this document in a manner contrary to his/her outstanding recommendation, or neither he/she nor his/her respective associate(s) has dealt in or traded in the securities covered in this document within 30 calendar days prior to the date of issue of this document or will so deal in or trade such securities within 3 business days after the date of issue of this document; (ii) neither he/she nor his/her respective associate(s) serves as an officer of any of the companies covered in this document; and (iii) neither he/she nor his/her respective associate(s) has any financial interests in the securities covered in this document.

**Disclaimers:**

This document is prepared by CCB International Securities Limited. CCB International Securities Limited is a wholly-owned subsidiary of CCB International (Holdings) Limited ("CCBIH") and China Construction Bank Corporation ("CCB"). Information herein has been obtained from sources believed to be reliable but CCB International Securities Limited, its affiliates and/or subsidiaries (collectively "CCBIS") do not guarantee, represent and warrant (either express or implied) its completeness or accuracy or appropriateness for any purpose or any person whatsoever. Opinions and estimates constitute our judgment as of the date of this document and are subject to change without notice. CCBIS seeks to update its research as appropriate, but various regulations may prevent it from doing so. Besides certain industry reports published on a periodic basis, the large majority of reports are published at irregular intervals as appropriate according to the analyst's judgment. Forecasts, projections and valuations are inherently speculative in nature and may be based on a number of contingencies. Readers should not regard the inclusion of any forecasts, projections and valuations in this document as a representation or warranty by or on behalf of CCBIS that these forecasts, projections or valuations or their underlying assumptions will be achieved. Investment involves risk and past performance is not indicative of future results. Information in this document is not intended to constitute or be construed as legal, financial, accounting, business, investment, tax or any professional advice for any prospective investors and should not be relied upon in that regard. This document is for informational purposes only and should not be treated as an offer or solicitation for the purchase or sale of any products, investments, securities, trading strategies or financial instruments of any kind in any jurisdiction. CCBIS makes no representations on the availability of the securities covered in this document (or related investment) to the recipients. The securities described herein may not be eligible for sale in all jurisdictions or to certain categories of investors. Neither CCBIS nor any other persons accept any liability whatsoever for any loss or damages (whether direct, indirect, incidental, exemplary, compensatory, punitive, special or consequential) arising from any use of this document or its contents or otherwise arising in connection therewith. Securities, financial instruments or strategies mentioned herein may not be suitable for all investors. The opinions and recommendations herein do not take into account prospective investors' financial circumstances, investment objectives, or particular needs and are not intended as recommendations of particular securities, financial instruments or strategies to any prospective investors. The recipients of this document should consider this document as only a single factor in making their investment decision and shall be solely responsible for making their own independent investigation of the business, financial condition and prospects of companies referred to in this document. Readers are cautioned that (i) the price and value of securities referred to in this document and the income derived from them may fluctuate; (ii) past performance is not a guide to future performance; (iii) any analysis, ratings and recommendations made in this document are intended for long-term (at least for 12 months) and is not linked to a near-term assessment of the likely performance of the securities or companies in question. In any event, future actual results may differ materially from those set forth in any forward-looking statements herein; (iv) future returns are not guaranteed, and a loss of original capital may occur; and (v) fluctuations in exchange rates may adversely affect the value, price or income of any security or related instrument referred to in this document. It should be noted that this document covers only those securities or companies as specified herein and does not extend to any derivative instruments thereof, the value of which may be affected by many factors and may not correspond with the value of the underlying securities. Trading in these instruments is considered risky and are not suitable for all investors. While all reasonable care has been taken to ensure that the facts stated herein are accurate and that the forward-looking statements, opinions and expectations contained herein are based on fair and reasonable assumptions, CCBIS has not been able to verify independently such facts or assumptions and CCBIS shall not be liable for the accuracy, completeness or correctness thereof and no representation or warranty is made, express or implied, in this regard. All pricing referred to in this document is as of the close of local market for the securities discussed, unless otherwise stated and for information purposes only. There is no representation that any transaction can or could have been effected at those prices, and any prices do not necessarily reflect CCBIS' internal books and records or theoretical model-based valuations and may be based on certain assumptions. Different assumptions could result in substantially different results. Any statements which may be contained herein attributed to a third-party represent CCBIS' interpretation of the data, information and/or opinions provided by that third party either publicly or through a subscription service, and such use and interpretation have not been reviewed or endorsed by the third party. Reproduction and distribution of these third party contents in any form is prohibited except with the prior written consent of such third party. The recipients must make their own assessments of the relevance, accuracy and adequacy of the information contained in this document and make such independent investigation as they may consider necessary or appropriate for such purpose. Recipients should seek independent legal, financial, accounting, business, investment and/or tax advice if they have any doubt about the contents of this document and satisfy themselves prior to making any investment decision that such investment is in line with their own investment objectives and horizons. Use of hyperlinks to other internet sites or resources (if any) as referred to in this document is at users' own risk. They are provided solely for the purpose of convenience and information and the content of these internet sites or resources does not in any way form part of this document. The contents, accuracy, opinion expressed, and other links provided at these sites are not investigated, verified, monitored, or endorsed by CCBIS. CCBIS expressly disclaims any responsibility for and does not guarantee, represent and warrant (either express or implied) the completeness, accuracy, appropriateness, availability or security of information found on these websites. Users of these websites are solely responsible for making all enquiries, investigation and risk assessment before proceeding with any online or offline access or

transaction with any of these third parties. All activities conducted by users via or at these websites are at their own risk. CCBIS does not guarantee the security of any information users may forward or be requested to provide to any third parties via these websites. Users are deemed to have irrevocably waived any claims against CCBIS for any loss or damage suffered as a result of any access to or interaction with any of these websites. Upon request CCBIS may provide specialized research products or services to certain customers focusing on the prospects for specific securities as compared with other covered securities over varying time horizons or under differing market conditions. While the views expressed in these situations may not always be directionally consistent with the long-term views expressed in the analyst's published research, CCBIS has procedures in place to prevent selective disclosure and will update the relevant readers when our views has changed. CCBIS also has procedures in place to identify and manage potential conflicts of interest that may arise in connection with its research business and services. Chinese Wall procedures are also in place to ensure that any confidential and/or price sensitive information is properly handled. CCBIS will use its best endeavors to comply with the relevant laws and regulations in this respect. Nevertheless, the recipients should be aware that CCB, CCBIS, their affiliates and/or their officers, directors and employees may do business with the issuer(s) of the securities covered in this document, including investment banking business or direct investment business or may hold interest in (and/or later add or dispose) such securities (or in any related investment) for themselves and/or on behalf of their clients from time to time. As a result, investors should be aware that CCBIS may have a conflict of interest that could affect the objectivity of this document and CCBIS will not assume any responsibility in respect thereof. Further, the information contained herein may differ or be contrary to opinions expressed by other associates of CCBIS or other members of the CCB or CCBIH group of companies. Where this document refers to any products, investments, securities, financial instruments or industry sectors, this is for the information of the institutional and professional customers of CCBIS only and this document should not be distributed to retail customers. This document is not directed at you if CCBIS is prohibited or restricted by any legislation or regulation in any jurisdiction from making it available to you. You should satisfy yourself before reading it that CCBIS is permitted to provide research material concerning investments to you and that you are permitted and entitled to receive and read the document under relevant legislation and regulations. In particular, this document is only distributed to certain US Persons to whom CCBIS is permitted to distribute according to US securities laws, but cannot otherwise be distributed or transmitted, whether directly or indirectly, into the US or to any other US person. Any US person (as defined under the Exchange Act or the U.S. Internal Revenue Code of 1986, as amended) who is a recipient of this material wishing to effect any transaction to buy or sell securities or related financial instruments based on the information provided herein should direct such transaction exclusively to and such transaction shall be effected only through CCB International Overseas (USA), Inc. This document also cannot be distributed or transmitted, whether directly or indirectly, into Japan and Canada and not to the general public in the People's Republic of China (for the purpose of this document, excluding Hong Kong, Macau and Taiwan) unless under applicable laws. Any unauthorized reproduction or redistribution by any means to any persons, in whole or in part of this document is strictly prohibited and CCBIS accepts no liability whatsoever for the actions of third parties in distributing this research report. If this document has been distributed by electronic transmission, such as e-mail, then such transmission cannot be guaranteed to be secure or error-free as information could be intercepted, corrupted, lost, destroyed, arrive late or incomplete, or contain viruses. CCBIS therefore does not accept liability for any errors or omissions in the contents of this document, which may arise as a result of electronic transmission. The disclosures contained in this document prepared by CCBIS shall be governed by and construed in accordance with the laws of Hong Kong.

Distribution in Singapore: The information/research herein is prepared by CCB International Securities Limited ("CCBIS"), a foreign affiliate of CCB International (Singapore) Pte Ltd ("CCBISG") (Co. Reg. No. 201531408W). CCBISG holds a capital markets services license from the Monetary Authority of Singapore for fund management, dealing in capital market products (specifically securities and collective investment schemes) and providing custodial services, and is an Exempt Financial Adviser under the Financial Advisers Act in respect of advising others by issuing or promulgating research analysis or research reports. CCBIS may distribute information/research pursuant to an arrangement with CCBISG under Regulation 32C of the Financial Advisers Regulations. CCBIS is licensed in Hong Kong to provide such information/research reports. Singapore recipients should contact CCBISG at +65-68071880 for matters arising from, or in connection with the information distributed.

Copyright 2023 CCBIS. The signs, logos and insignia used in this research report and the company name "CCB International Securities Limited" are the registered and unregistered trademarks of CCB, CCBIH and/or CCBIS. All rights are hereby reserved. All material presented in this document, unless indicated otherwise, is under copyright to CCBIS. This document or any portion hereof may not be reproduced, sold or redistributed without the written consent of CCBIS.

**CCB International Securities Limited**  
**12/F, CCB Tower, 3 Connaught Road, Central, Hong Kong**  
**Tel: (852) 3911 8000 / Fax: (852) 2537 0097s**