



CCBI SECURITIES | RESEARCH

China Economics Update: 1Q GDP beat expectations, lifting annual growth forecasts

中国经济评论: 经济增长良好开局, 上调 2024 年 GDP 增长预测

Strong GDP in 1Q bodes well for growth. Downside surprise in industrial production in Mar could have occurred as the result of holiday distortions. We expect the industrial sectors to enjoy solid growth as manufacturing PMI improves. Despite a stubborn downturn in the property market, manufacturing and infrastructure investment accelerated in 1Q, fueled by a strong economic transition. Sequential improvement in retail sales suggests stabilizing consumption. Given the good start to the year and continued policy support, we raise our 2024 GDP growth forecast for China from 5.0% to 5.2%.

Macro policy support to continue. Apart from greater fiscal support, new policy initiatives such as large-scale equipment upgrades and consumer good trade-ins could add to investment and consumption demand. We continue to expect a 25bp cut to the Required Reserve Ratio (RRR). However, the strong US dollar may limit the room for interest rate cuts in the near-term.

强劲的一季度 GDP 为年度稳健增长奠定基础。 3 月份工业生产弱于预期的表现可能受假期影响。制造业 PMI 近期趋势改善, 我们预计工业部门将稳步增长。尽管地产市场持续低迷, 但在强劲的经济转型推动下, 制造业和基础设施投资加速。零售环比改善表明消费企稳。鉴于良好开局和持续的政策支持, 我们将 2024 年 GDP 增长预测从 5% 上调至 5.2%。

预计宏观政策支持持续。 除了加大财政支持外, 设备升级和消费品以旧换新计划等新的政策举措有助增加投资和消费需求。我们仍预计存款准备金率将下调 25 个基点。不过, 美元走强可能会限制近期降息空间。

Kevin Xie

(852) 3911 8241

kevinxie@ccbintl.com

Li Cui

(852) 3911 8274

cuili@ccbintl.com

Huiting Yan

(852) 3911 8012

yanhuiting@ccbintl.com

Stronger-than-expected 1Q 2024 GDP bodes well for the rest of the year

GDP growth came in stronger than our and the Bloomberg expectation (actual: 1.6% QoQ versus consensus: 1.5% QoQ and our forecast: 1.3% QoQ). Furthermore, the National Bureau of Statistics (NBS) raised its 4Q 2023 growth estimate by 0.2ppt. As a result, annual GDP growth accelerated from 4.8% YoY to 5.3% YoY in 1Q 2024, despite a high base in 1Q 2023.

By industry, China's industrial sectors remain the growth engine of the economy, with year-on-year growth picking up to 6% YoY in 1Q 2024. By contrast, services growth slowed from 5.8% YoY to 5.0% YoY amid waning demand and base effects.

March data distorted by CNY holiday and base effects

IP growth slowed to 4.5% YoY in Mar, which was softer than the consensus expectation of a 6% YoY rise and our estimate of a 6.2% YoY rise. Seasonal adjusted sequential IP contracted by 0.1% MoM, after several months of strong expansion.

By industry, growth in mining output slowed to just 0.2% YoY, probably because the cold winter had affected mining activity. Manufacturing output expanded 5.1% YoY, slightly softer than the previous two months. Auto, chemicals, computers, and electronic equipment remain the leading output industries (Fig 1).

Retail sales growth picked up sequentially. Seasonally adjusted sequential growth rose to 0.3% MoM in Mar, the highest level since Oct 2023. In YoY terms, retail sales slowed from 5.5% YoY to 3.1% YoY in Mar (consensus: 4.8% YoY, our forecast: 4.0% YoY), driven by the high base in 2023. By contrast, online sales growth surged as consumers shifted to online spending hoping to take advantage of online sales promotions (Fig 2). Year-on-year growth in most consumer goods categories decelerated, affected by base effects. Catering spending slowed from 12.5% YoY to 6.9% YoY in Mar. Car sales contracted 2.9% YoY, the first contraction since Feb 2023.

Fixed asset investment (FAI) growth picked up to 4.7% YoY in Mar according to our estimate (Fig 3). This was the fifth consecutive month of acceleration. Accelerating manufacturing and infrastructure investment remain the key growth drivers of China's economy, offsetting weakness in real estate investment. By category:

- **Broad infrastructure investment growth accelerated** by almost 2ppt to 11.7% YoY in Mar. Investment growth in traditional infrastructure investment such as railways, highways, and industrial parks, remained solid at 6.6% YoY, a testament to government efforts to bolster growth. Investment growth to decarbonize China's power sector jumped to 31.5% YoY in Mar, proving once again that [green investment](#) is of paramount importance to the government.
- **Manufacturing investment growth accelerated** to 10.3% YoY. Broad-based growth picked up across China's manufacturing industries, suggesting industrial upgrades are the dominant theme not only in prioritized areas, such as transportation, electrical machinery & equipment, and nonferrous metals, but also in traditional sectors such as food processing and general equipment.
- **Contraction in real estate investment widened** by 1ppt to 10.0% YoY in Mar by our estimate. The outlook for real estate investment remains soft given persistent concerns over funding stress at property developers. Year-on-year contraction in funding widened to 29% YoY amid broad-based weakness.

Volume-based property indicators make for a weak outlook. The contraction in property starts in Mar eased slightly, but was still wide at 25.6% YoY. Property under construction and property completions contracted 19.1% YoY and 25.1% YoY in Mar, 8ppt and 1ppt wider than they were in Jan-Feb. Property sales contracted 23.7% YoY, which was marginally better than the previous period and consistent with gradual improvement revealed in the high frequency data (Fig 4).

The average price of new properties in the 70 largest Chinese cities fell 0.34% MoM in Mar, marking eight months of consecutive decline. Downward price pressure was heavier in lower-tier cities.

Inflation fell sharply in Mar, driven by waning seasonal demand, as [we expected](#). Consumer inflation slowed notably to 0.1% YoY in Mar, after a 0.7% rise in Feb, lower than the market expectation of 0.4%. Sequentially, inflation fell 1% MoM in Mar, following a 1% MoM rise in Feb. Seasonal holiday demand faded, with food inflation and transportation and communication inflation down 2.7% YoY and 1.3% YoY, respectively. Outside food, travel, and fuel prices, overall inflation remains soft. Low core inflation reminds us that domestic consumption demand is still soft.

PPI registered a 2.8% YoY decline in Mar. Sequentially, PPI inflation fell for the fifth consecutive month, this time by 0.1% MoM. Despite rising global commodity prices, declining mining and quarrying costs weighed on Chinese PPI in Mar.

Total social financing (TSF) rose 8.7% YoY in Mar, the slowest pace on record. We attribute the slowdown in growth to slower bank loan expansion and government bond issuance. By contrast, shadow credit and corporate bond issuance rebounded slightly. Both medium- to long-term (ML) corporate and household borrowing slowed on a year-on-year basis, partly because of a high base. Sequential growth in both measures rebounded slightly.

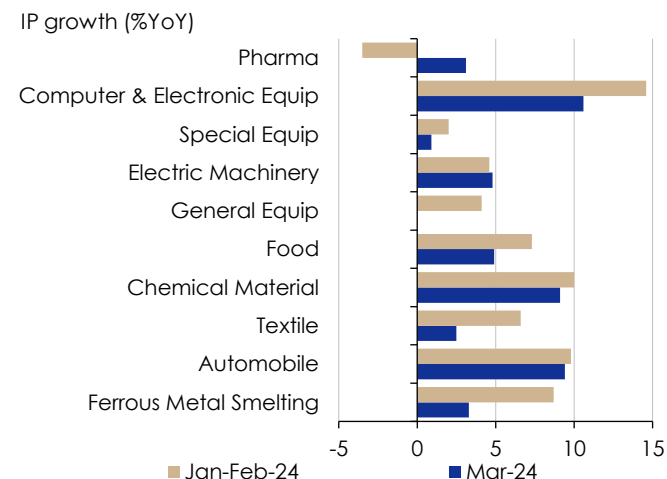
Our view:

While much of the monthly data for 1Q was distorted by the CNY holiday effect, average growth momentum suggests a solid start to the year, consistent with our expectation of an economic recovery ([Big Picture: 2024 macro outlook – more recovery ahead](#)). Solid growth momentum will likely persist in the near-term, in our view. Both the Caixin and official manufacturing PMIs have exhibited similar improving trends, suggesting that the slower sequential IP growth in Mar could be a one-off after several months of expansion. Accelerating fixed investment highlights the strong economic transition, driven by industrial upgrades, the green transition, and technological innovation, all compensating for the prolonged property downturn. Furthermore, the official new export order sub-PMI has improved, suggesting rising external demand. Sequential improvement in retail sales suggests stabilizing consumption. Given these tailwinds, we raise our 2024 growth forecast from 5.0% to 5.2%.

Pro-growth policies should sustain the current momentum, in our view. Fiscal policies are likely to be more supportive than they were last year (details [here](#)). New policy initiatives such as large-scale equipment upgrades and consumer goods trade-ins could add to investment and consumption demand.

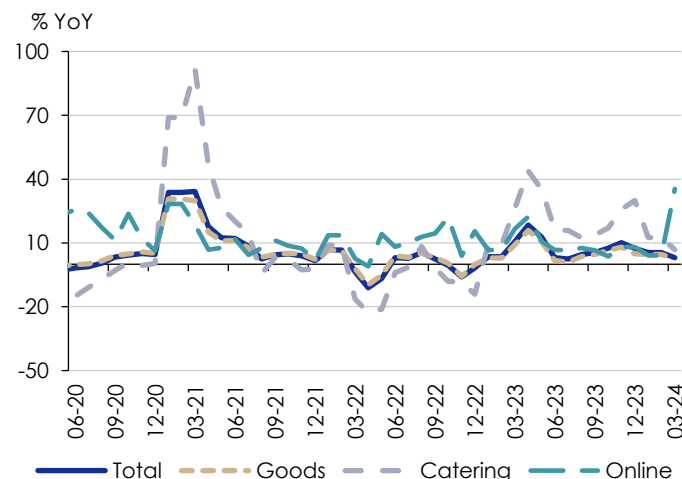
The recent PBoC communication re-iterated the imperative of maintaining sufficient liquidity. At the monthly medium-term lending (MLF) facility rollover, the PBoC reduced its net liquidity injection by RMB70b, while maintaining the 1-year MLF rate at 2.5%. Such a small reduction likely represents an adjustment to overall liquidity, rather than a shift in the PBoC's policy stance. We continue to expect a 25bp cut to the RRR though the strong US dollar may limit the room for interest rate cuts in the near-term.

Fig 1: Output in auto, computers & electronics, and chemicals remains strong



Source: NBS, CCBIS

Fig 2: Online spending growth surged in Mar



Source: NBS, CEIC, CCBIS

Fig 3: Manufacturing and infrastructure investment picked up, offsetting falling property investment

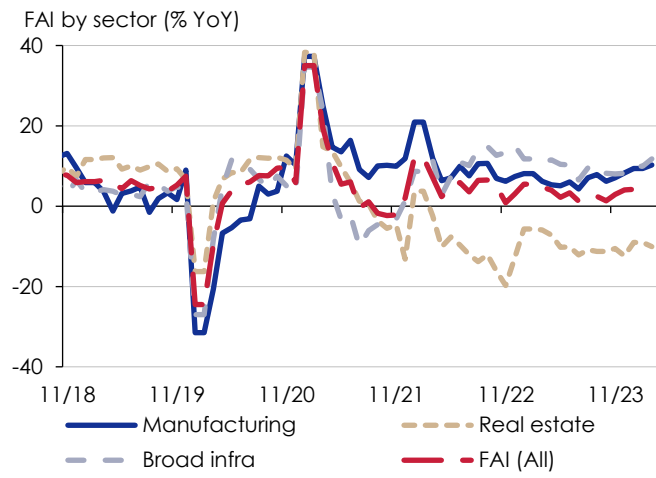
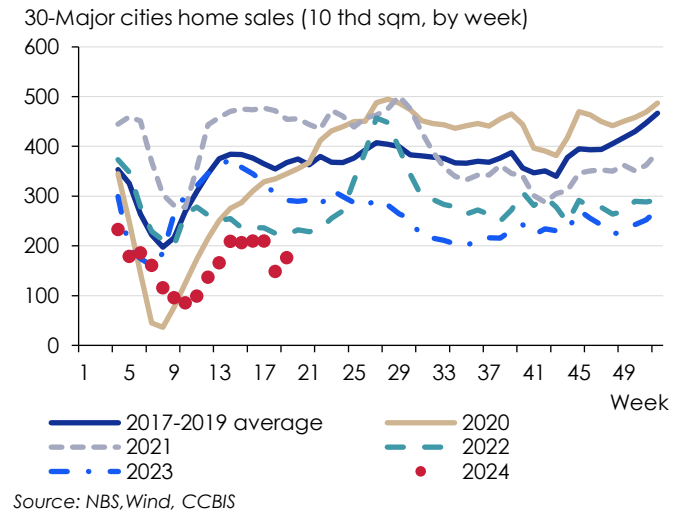


Fig 4: Property sales sequentially improved, but remained soft



Analyst certification:

The author(s) of this document, hereby declare that: (i) all of the views expressed in this document accurately reflect his/her personal views about any and all of the subject securities or issuers and were prepared in an independent manner; (ii) no part of any of his/her compensation was, is, or will be directly or indirectly related to the specific recommendations or views expressed in this document; and (iii) he/she receives no insider information/non-public price-sensitive information in relation to the subject securities or issuers which may influence the recommendations made by him. The author(s) of this document further confirm that (i) neither he/she nor his/her respective associate(s) (as defined in the Code of Conduct for Persons Licensed by or Registered with the Securities and Futures Commission issued by the Hong Kong Securities and Futures Commission) has dealt in/traded or will deal in /trade the securities covered in this document in a manner contrary to his/her outstanding recommendation, or neither he/she nor his/her respective associate(s) has dealt in or traded in the securities covered in this document within 30 calendar days prior to the date of issue of this document or will so deal in or trade such securities within 3 business days after the date of issue of this document; (ii) neither he/she nor his/her respective associate(s) serves as an officer of any of the companies covered in this document; and (iii) neither he/she nor his/her respective associate(s) has any financial interests in the securities covered in this document.

Disclaimers:

This document is prepared by CCB International Securities Limited. CCB International Securities Limited is a wholly-owned subsidiary of CCB International (Holdings) Limited ("CCBIH") and China Construction Bank Corporation ("CCB"). Information herein has been obtained from sources believed to be reliable but CCB International Securities Limited, its affiliates and/or subsidiaries (collectively "CCBIS") do not guarantee, represent and warrant (either express or implied) its completeness or accuracy or appropriateness for any purpose or any person whatsoever. Opinions and estimates constitute our judgment as of the date of this document and are subject to change without notice. CCBIS seeks to update its research as appropriate, but various regulations may prevent it from doing so. Besides certain industry reports published on a periodic basis, the large majority of reports are published at irregular intervals as appropriate according to the analyst's judgment. Forecasts, projections and valuations are inherently speculative in nature and may be based on a number of contingencies. Readers should not regard the inclusion of any forecasts, projections and valuations in this document as a representation or warranty by or on behalf of CCBIS that these forecasts, projections or valuations or their underlying assumptions will be achieved. Investment involves risk and past performance is not indicative of future results. Information in this document is not intended to constitute or be construed as legal, financial, accounting, business, investment, tax or any professional advice for any prospective investors and should not be relied upon in that regard. This document is for informational purposes only and should not be treated as an offer or solicitation for the purchase or sale of any products, investments, securities, trading strategies or financial instruments of any kind in any jurisdiction. CCBIS makes no representations on the availability of the securities covered in this document (or related investment) to the recipients. The securities described herein may not be eligible for sale in all jurisdictions or to certain categories of investors. Neither CCBIS nor any other persons accept any liability whatsoever for any loss or damages (whether direct, indirect, incidental, exemplary, compensatory, punitive, special or consequential) arising from any use of this document or its contents or otherwise arising in connection therewith. Securities, financial instruments or strategies mentioned herein may not be suitable for all investors. The opinions and recommendations herein do not take into account prospective investors' financial circumstances, investment objectives, or particular needs and are not intended as recommendations of particular securities, financial instruments or strategies to any prospective investors. The recipients of this document should consider this document as only a single factor in making their investment decision and shall be solely responsible for making their own independent investigation of the business, financial condition and prospects of *companies* referred to in this document. Readers are cautioned that (i) the price and value of securities referred to in this document and the income derived from them may fluctuate; (ii) past performance is not a guide to future performance; (iii) any analysis, ratings and recommendations made in this document are intended for long-term (at least for 12 months) and is not linked to a near-term assessment of the likely performance of the securities or companies in question. In any event, future actual results may differ materially from those set forth in any forward-looking statements herein; (iv) future returns are not guaranteed, and a loss of original capital may occur; and (v) fluctuations in exchange rates may adversely affect the value, price or income of any security or related instrument referred to in this document. It should be noted that this document covers only those securities or companies as specified herein and does not extend to any derivative instruments thereof, the value of which may be affected by many factors and may not correspond with the value of the underlying securities. Trading in these instruments is considered risky and are not suitable for all investors. While all reasonable care has been taken to ensure that the facts stated herein are accurate and that the forward-looking statements, opinions and expectations contained herein are based on fair and reasonable assumptions, CCBIS has not been able to verify independently such facts or assumptions and CCBIS shall not be liable for the accuracy, completeness or correctness thereof and no representation or warranty is made, express or implied, in this regard. All pricing referred to in this document is as of the close of local market for the securities discussed, unless otherwise stated and for information purposes only. There is no representation that any transaction can or could have been effected at those prices, and any prices do not necessarily reflect CCBIS' internal books and records or theoretical model-based valuations and may be based on certain assumptions. Different assumptions could result in substantially different results. Any statements which may be contained herein attributed to a third-party represent CCBIS' interpretation of the data, information and/or opinions provided by that third party either publicly or through a subscription service, and such use and interpretation have not been reviewed or endorsed by the third party. Reproduction and distribution of these third party contents in any form is prohibited except with the prior written consent of such third party. The recipients must make their own assessments of the relevance, accuracy and adequacy of the information contained in this document and make such independent investigation as they may consider necessary or appropriate for such purpose. Recipients should seek independent legal, financial, accounting, business, investment and/or tax advice if they have any doubt about the contents of this document and satisfy themselves prior to making any investment decision that such investment is in line with their own investment objectives and horizons. Use of hyperlinks to other internet sites or resources (if any) as referred to in this document is at users' own risk. They are provided solely for the purpose of convenience and information and the content of these internet sites or resources does not in any way form part of this document. The contents, accuracy, opinion expressed, and other links provided at these sites are not investigated, verified, monitored, or endorsed by CCBIS. CCBIS expressly disclaims any responsibility for and does not guarantee, represent and warrant (either express or implied) the completeness, accuracy, appropriateness, availability or security of information found on these websites. Users of these websites are solely responsible for making all enquiries, investigation and risk assessment before proceeding with any online or offline access or

transaction with any of these third parties. All activities conducted by users via or at these websites are at their own risk. CCBIS does not guarantee the security of any information users may forward or be requested to provide to any third parties via these websites. Users are deemed to have irrevocably waived any claims against CCBIS for any loss or damage suffered as a result of any access to or interaction with any of these websites. Upon request CCBIS may provide specialized research products or services to certain customers focusing on the prospects for specific securities as compared with other covered securities over varying time horizons or under differing market conditions. While the views expressed in these situations may not always be directionally consistent with the long-term views expressed in the analyst's published research, CCBIS has procedures in place to prevent selective disclosure and will update the relevant readers when our views has changed. CCBIS also has procedures in place to identify and manage potential conflicts of interest that may arise in connection with its research business and services. Chinese Wall procedures are also in place to ensure that any confidential and/or price sensitive information is properly handled. CCBIS will use its best endeavors to comply with the relevant laws and regulations in this respect. Nevertheless, the recipients should be aware that CCB, CCBIS, their affiliates and/or their officers, directors and employees may do business with the issuer(s) of the securities covered in this document, including investment banking business or direct investment business or may hold interest in (and/or later add or dispose) such securities (or in any related investment) for themselves and/or on behalf of their clients from time to time. As a result, investors should be aware that CCBIS may have a conflict of interest that could affect the objectivity of this document and CCBIS will not assume any responsibility in respect thereof. Further, the information contained herein may differ or be contrary to opinions expressed by other associates of CCBIS or other members of the CCB or CCBIH group of companies. Where this document refers to any products, investments, securities, financial instruments or industry sectors, this is for the information of the institutional and professional customers of CCBIS only and this document should not be distributed to retail customers. This document is not directed at you if CCBIS is prohibited or restricted by any legislation or regulation in any jurisdiction from making it available to you. You should satisfy yourself before reading it that CCBIS is permitted to provide research material concerning investments to you and that you are permitted and entitled to receive and read the document under relevant legislation and regulations. In particular, this document is only distributed to certain US Persons to whom CCBIS is permitted to distribute according to US securities laws, but cannot otherwise be distributed or transmitted, whether directly or indirectly, into the US or to any other US person. Any US person (as defined under the Exchange Act or the U.S. Internal Revenue Code of 1986, as amended) who is a recipient of this material wishing to effect any transaction to buy or sell securities or related financial instruments based on the information provided herein should direct such transaction exclusively to and such transaction shall be effected only through CCB International Overseas (USA), Inc. This document also cannot be distributed or transmitted, whether directly or indirectly, into Japan and Canada and not to the general public in the People's Republic of China (for the purpose of this document, excluding Hong Kong, Macau and Taiwan) unless under applicable laws. Any unauthorized reproduction or redistribution by any means to any persons, in whole or in part of this document is strictly prohibited and CCBIS accepts no liability whatsoever for the actions of third parties in distributing this research report. If this document has been distributed by electronic transmission, such as e-mail, then such transmission cannot be guaranteed to be secure or error-free as information could be intercepted, corrupted, lost, destroyed, arrive late or incomplete, or contain viruses. CCBIS therefore does not accept liability for any errors or omissions in the contents of this document, which may arise as a result of electronic transmission. The disclosures contained in this document prepared by CCBIS shall be governed by and construed in accordance with the laws of Hong Kong.

Distribution in Singapore: The information/research herein is prepared by CCB International Securities Limited ("CCBIS"), a foreign affiliate of CCB International (Singapore) Pte Ltd ("CCBISG") (Co. Reg. No. 201531408W). CCBISG holds a capital markets services license from the Monetary Authority of Singapore for fund management, dealing in capital market products (specifically securities and collective investment schemes) and providing custodial services, and is an Exempt Financial Adviser under the Financial Advisers Act in respect of advising others by issuing or promulgating research analysis or research reports. CCBIS may distribute information/research pursuant to an arrangement with CCBISG under Regulation 32C of the Financial Advisers Regulations. CCBIS is licensed in Hong Kong to provide such information/research reports. Singapore recipients should contact CCBISG at +65-68071880 for matters arising from, or in connection with the information distributed.

Copyright 2024 CCBIS. The signs, logos and insignia used in this research report and the company name "CCB International Securities Limited" are the registered and unregistered trademarks of CCB, CCBIH and/or CCBIS. All rights are hereby reserved. All material presented in this document, unless indicated otherwise, is under copyright to CCBIS. This document or any portion hereof may not be reproduced, sold or redistributed without the written consent of CCBIS.

CCB International Securities Limited
12/F, CCB Tower, 3 Connaught Road, Central, Hong Kong
Tel: (852) 3911 8000 / Fax: (852) 2537 0097s